

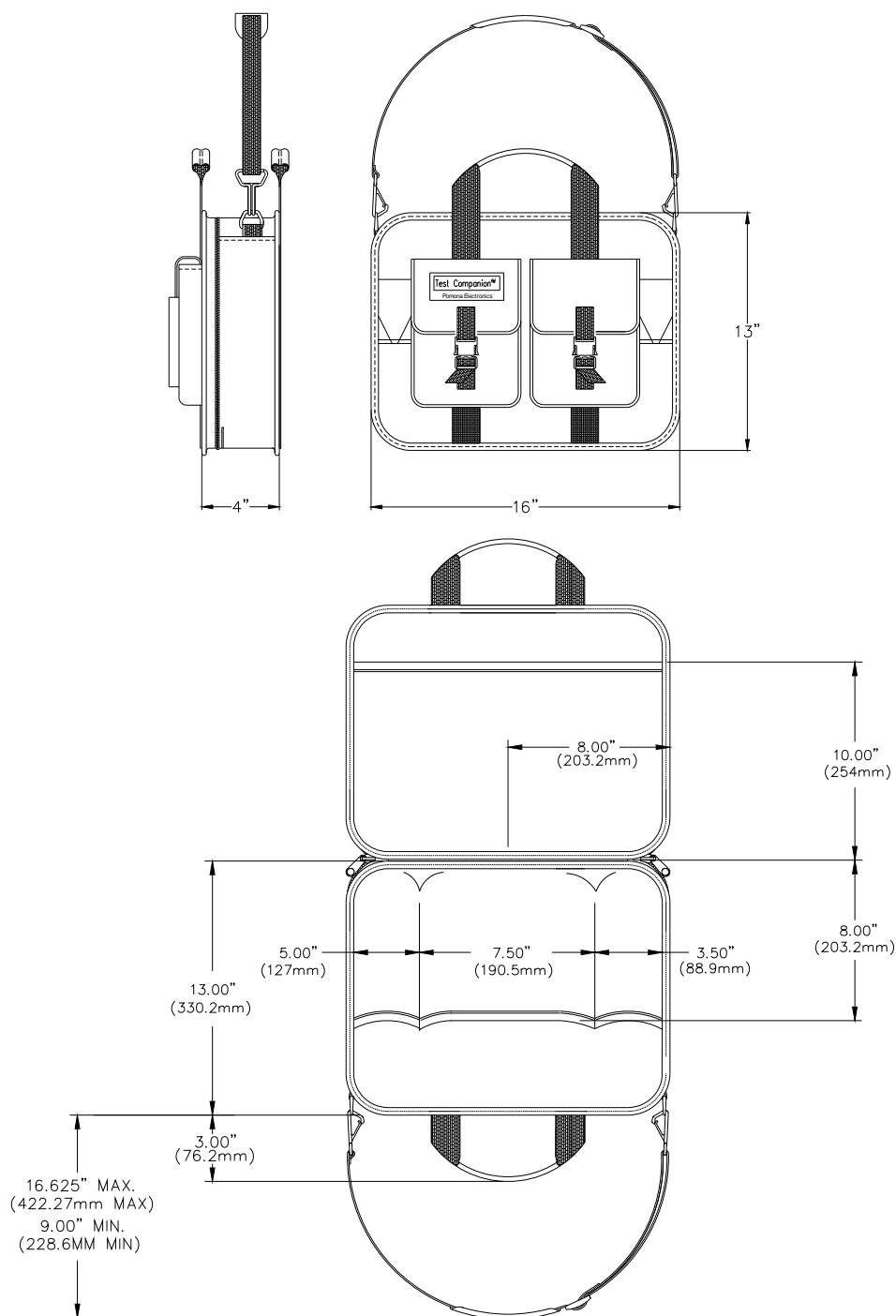
**Model CK73041  
Calibration Kit*****CK73041  
CALIBRATION KIT***

The POMONA CK73041 Calibration Kit includes the major connectors and test cables you need for instrument calibration in a comprehensive kit. Versatile adapters and flexible cables greatly expand the variety of test cables you can create, reducing the number of special-purpose patch cords and connectors needed for calibration applications.

*For data sheets / specifications of the individual components contained in the CK73041 Calibration Kit, please visit the POMONA website at:*  
**[www.pomonaelectronics.com](http://www.pomonaelectronics.com)**

**USA:** Sales: 800-490-2361  
Technical Support: [technicalsupport@pomonatest.com](mailto:technicalsupport@pomonatest.com)  
Fax: 425-446-5844  
**Europe:** 31-(0) 40 2675 150 **International:** 425-446-5500  
**Where to Buy:** [www.pomonaelectronics.com](http://www.pomonaelectronics.com)

All dimensions are in inches. Tolerances (except noted): .xx =  $\pm .02$ " (.51 mm), .xxx =  $\pm .005$ " (.127 mm). All specifications are to the latest revisions. Specifications are subject to change without notice. Registered trademarks are the property of their respective companies.

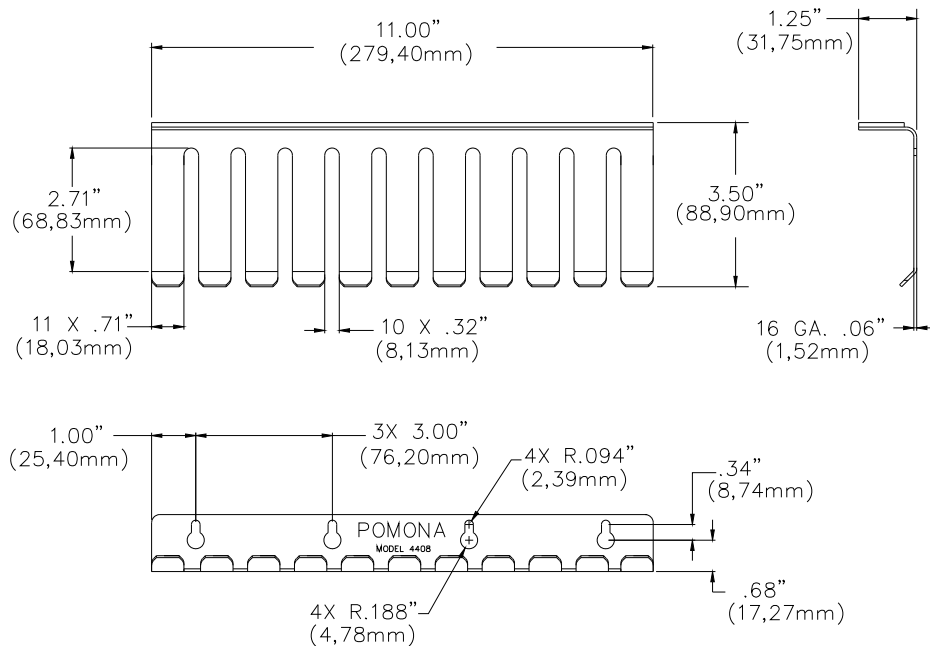
**Model CK73041  
Calibration Kit**

MODEL 6146  
LARGE TEST COMPANION CARRYING CASE  
QTY 1

**USA:** Sales: 800-490-2361  
Technical Support: [technicalsupport@pomonatest.com](mailto:technicalsupport@pomonatest.com)  
Fax: 425-446-5844  
**Europe:** 31-(0) 40 2675 150 **International:** 425-446-5500  
**Where to Buy:** [www.pomonaelectronics.com](http://www.pomonaelectronics.com)

All dimensions are in inches. Tolerances (except noted): .xx =  $\pm 0.02$ " (.51 mm), .xxx =  $\pm 0.005$ " (.127 mm). All specifications are to the latest revisions. Specifications are subject to change without notice. Registered trademarks are the property of their respective companies.

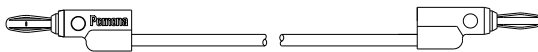
# Model CK73041 Calibration Kit



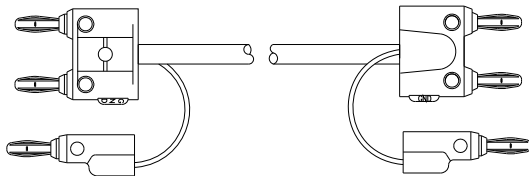
MODEL 4408  
TEST LEAD HOLDER  
QTY 1



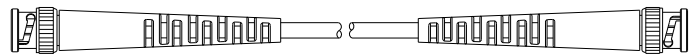
MODEL HB-\*  
PATCH CORD SINGLE STACKING BANANA PLUG  
QTY 4: 2 BLACK, 2 RED



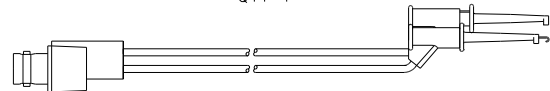
MODEL B-\*  
PATCH CORD SINGLE STACKING BANANA  
QTY 8: 4 BLACK, 4 RED



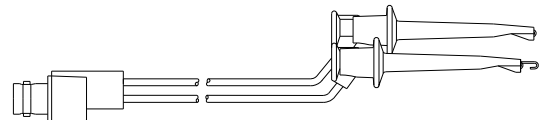
MODEL 1167  
PATCH CORD DOUBLE BANANA PLUG  
QTY 2



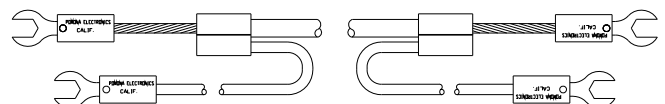
MODEL 2249  
BNC (M), RG58C/U  
QTY 4



MODEL 5188  
BREAKOUT BNC (F) TO MICROGRABBER  
QTY 1:



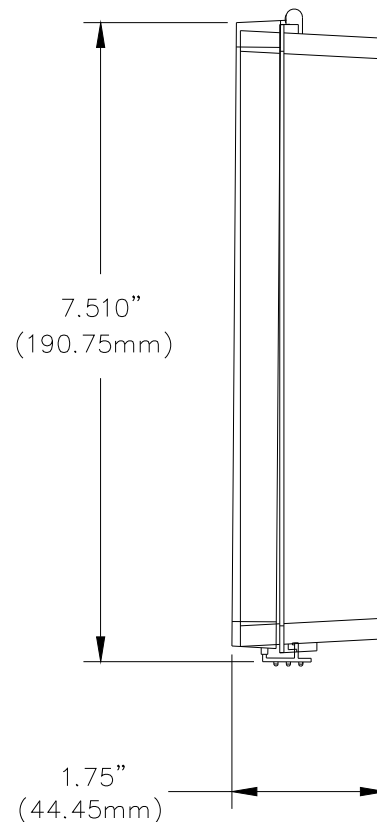
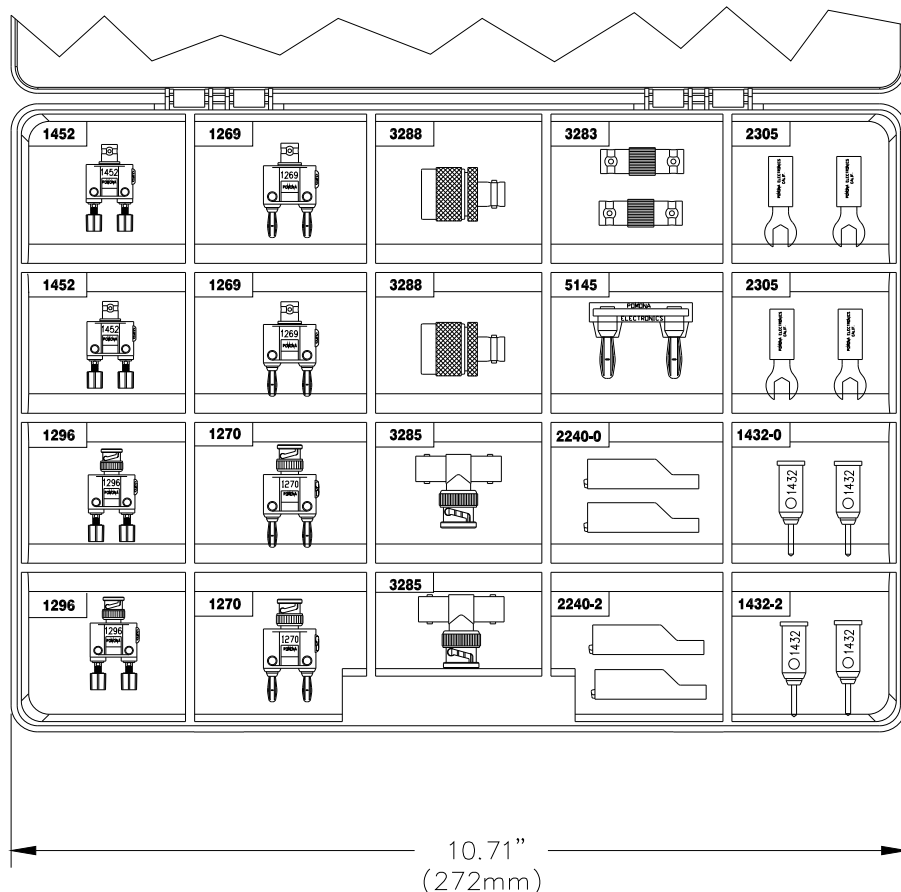
MODEL 3788  
BREAKOUT BNC (F) TO MINIGRABBER  
QTY 1:



MODEL 1756  
MICROVOLT SPADE LUG, SHIELDED  
QTY 2

**USA:** Sales: 800-490-2361  
Technical Support: [technicalsupport@pomonatest.com](mailto:technicalsupport@pomonatest.com)  
Fax: 425-446-5844  
**Europe:** 31-(0) 40 2675 150 **International:** 425-446-5500  
**Where to Buy:** [www.pomonaelectronics.com](http://www.pomonaelectronics.com)

All dimensions are in inches. Tolerances (except noted): .xx =  $\pm .02$ " (.51 mm), .xxx =  $\pm .005$ " (.127 mm). All specifications are to the latest revisions. Specifications are subject to change without notice. Registered trademarks are the property of their respective companies.

**Model CK73041  
Calibration Kit****Features**

- **Perfect for:**
  - Field Calibration
  - Outfitting a new technician or lab
  - Comprehensive replacement of important connectors and leads
- **The Calibration Kit allows you to:**
  - Combine connectors with patch cords to create a wide variety of necessary test cables.
  - Reduce the number of test cables needed by creating multiple combinations.
  - Make low voltage precision measurements with shielded low thermal EMF spade lug patch cords.
  - Easily connect to a variety of test equipment with BNC to banana and BNC to binding post adapters.
  - Use shielded coax cables for test and calibration rather than unshielded leads.
  - Turn banana plug patch cords into test leads terminated with alligator clips, spade lugs, or pin tips.
  - Access N Type instrument jacks.
  - Connect to analog components from coaxial cables.
  - Take advantage of shielded dual conductor patch cords.
  - Daisy-chain leads for those long lead situations.

**USA:** Sales: 800-490-2361  
Technical Support: [technicalsupport@pomonatest.com](mailto:technicalsupport@pomonatest.com)  
Fax: 425-446-5844  
**Europe:** 31-(0) 40 2675 150 **International:** 425-446-5500  
**Where to Buy:** [www.pomonaelectronics.com](http://www.pomonaelectronics.com)

All dimensions are in inches. Tolerances (except noted): .xx =  $\pm 0.02$ " (.51 mm), .xxx =  $\pm 0.005$ " (.127 mm). All specifications are to the latest revisions. Specifications are subject to change without notice. Registered trademarks are the property of their respective companies.

## Model CK73041 Calibration Kit

- The **CK73041 CALIBRATION KIT** includes:

Item	Model	Description	Quantity
1	<b>6146</b>	LARGE TEST COMPANION CARRYING CASE	1
2	<b>4408</b>	TEST LEAD HOLDER	1
3	<b>HB-36-0</b>	HORIZONTAL STACKING BANANA PLUG PATCH CORD, 36 INCHES (914.4 mm), BLACK	2
4	<b>HB-36-2</b>	HORIZONTAL STACKING BANANA PLUG PATCH CORD, 36 INCHES (914.4 mm), RED	2
5	<b>B-12-0</b>	STACKING BANANA PLUG PATCH CORD, 12 INCHES (304.8 mm), BLACK	2
6	<b>B-12-2</b>	STACKING BANANA PLUG PATCH CORD, 12 INCHES (304.8 mm), RED	2
7	<b>B-24-0</b>	STACKING BANANA PLUG PATCH CORD, 24 INCHES (609.6 mm), BLACK	2
8	<b>B-24-2</b>	STACKING BANANA PLUG PATCH CORD, 24 INCHES (609.6 mm), RED	2
9	<b>1167-36</b>	DOUBLE BANANA PLUG ON SHIELDED BALANCE LINE, 36 INCHES (914.4 mm)	2
10	<b>1756-48</b>	SHIELDED LOW VOLTAGE SPADE LUG PATCH CORD, 48 INCHES (1219.2 mm)	2
11	<b>2249-C-36</b>	BNC (M) RG58C/U RF CABLE, 36 INCHES (914.4 mm)	4
12	<b>5188</b>	BNC (F) TO MICROGRABBER TEST CLIPS	1
13	<b>3788</b>	BNC (F) TO MINIGRABBER TEST CLIPS	1
14	<b>1269</b>	BNC (F) / DOUBLE BANANA PLUG ADAPTER	2
15	<b>1270</b>	BNC (M) / DOUBLE BANANA PLUG ADAPTER	2
16	<b>1452</b>	BNC (F) / DOUBLE BINDING POST ADAPTER	2
17	<b>1296</b>	BNC (M) / DOUBLE BINDING POST ADAPTER	2
18	<b>2305</b>	SET OF BLACK AND RED MICROVOLT SPADE LUG / BANANA JACK ADAPTER	2 (SETS)
19	<b>2240-0</b>	ALLIGATOR CLIP / BANANA JACK ADAPTER, BLACK	2*
20	<b>2240-2</b>	ALLIGATOR CLIP / BANANA JACK ADAPTER, RED	2*
21	<b>1432-0</b>	PIN TIP / BANANA JACK ADAPTER, BLACK	2*
22	<b>1432-2</b>	PIN TIP / BANANA JACK ADAPTER, RED	2*
23	<b>3283</b>	BNC (F-F) ADAPTER	2
24	<b>3285</b>	BNC (F-M-F) T ADAPTER	2
25	<b>3288</b>	BNC (F) / N TYPE (M) ADAPTER	2
26	<b>5145</b>	DOUBLE BANANA PLUG SHORTING BAR, INSULATED	1

\* The model number refers to the standard item which is sold in 10 per package. However, the CK73041 contains only 2 pieces of the item.

## Ordering Information

Model: **CK73041**  
CALIBRATION KIT

**USA:** Sales: 800-490-2361  
Technical Support: [technicalsupport@pomonatest.com](mailto:technicalsupport@pomonatest.com)  
Fax: 425-446-5844  
**Europe:** 31-(0) 40 2675 150 **International:** 425-446-5500  
**Where to Buy:** [www.pomonaelectronics.com](http://www.pomonaelectronics.com)

All dimensions are in inches. Tolerances (except noted): .xx =  $\pm 0.02$ " (.51 mm), .xxx =  $\pm 0.005$ " (.127 mm). All specifications are to the latest revisions. Specifications are subject to change without notice. Registered trademarks are the property of their respective companies.

# Mouser Electronics

Authorized Distributor

Click to View Pricing, Inventory, Delivery & Lifecycle Information:

Pomona:

CK73041