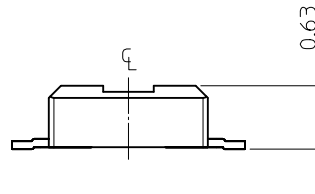
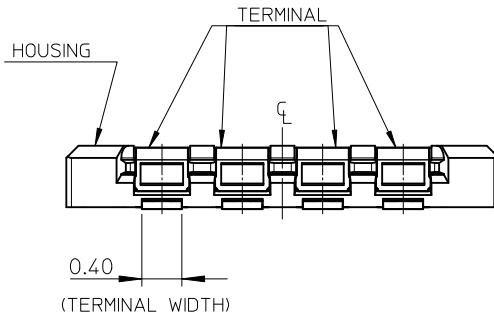


NOTES

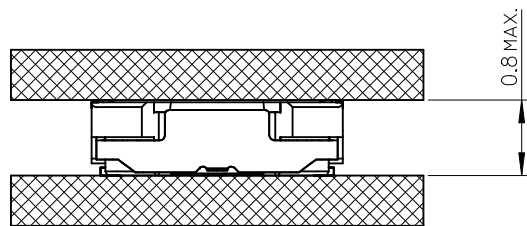
1. MATERIAL
HOUSING: LIQUID CRYSTAL POLYMER UL94V-0 (COLOR: BLACK)
TERMINAL FOR POWER OR SIGNAL CIRCUIT : COPPER ALLOY
2. PLATING
TERMINAL FOR POWER OR SIGNAL CIRCUIT
GOLD
UNDER PLATING : NICKEL
* DIVIDE INTO PARTS THE GOLD PLATING OF THE CONTACT AND THE TAIL PART BY THE NICKEL PLATING.
3. MATE WITH : 104249 SERIES.
4. TAIL COPLANARITY TO BE 0.08 MAXIMUM.
5. ELV and RoHS COMPLIANT.



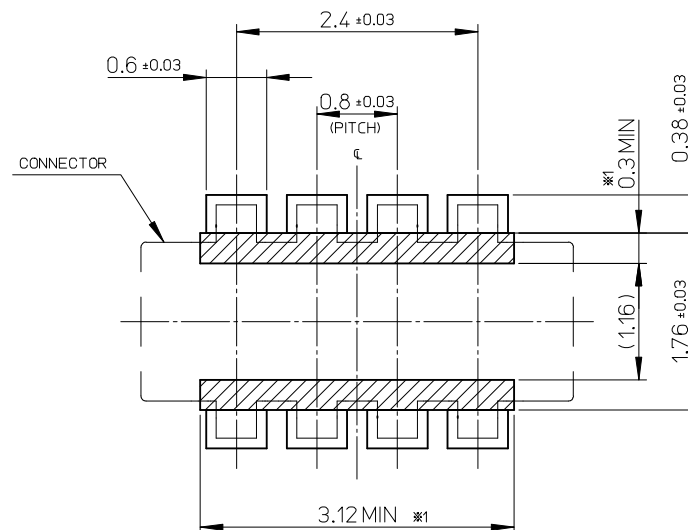
| | | | |
|----------------------|--------------------|---------------|---------|
| 104250-0820 | ○ | - | 8 |
| EMBOSSD TAPE PACKAGE | MASS PRODUCTION | LOW VOL. TOOL | CIRCUIT |
| ORDER NO. | SAMPLE PREPARATION | | |

CONNECTOR SERIES No. : 104250

| | | | | | | | | | | | | |
|---|--------------------|---|--|--|----------------------------|--------------------|--|------------------------|---|--|-----------|--|
| REVISED EC NO: KOR2017-0058 DRWN: JHCHANG 2017/05/31 CHKD: KSKIM 2017/06/02 APPR: YSKIM02 2017/06/07 D | DESCRIPTION REV | QUALITY SYMBOLS <div>F_A=0</div> <div>F_C=0</div> <div>F_P=0</div> | GENERAL TOLERANCES (UNLESS SPECIFIED) | | DIMENSION STYLE MM ONLY | | SCALE 20:1 | DESIGN UNITS METRIC | THIRD ANGLE PROJECTION <div>⊙</div> <div>⏏</div> | | | |
| | | | | | DRAWN BY JHCHANG | DATE 2015/03/06 | TITLE 0.8 BB CONN H=0.75 BATTERY PLUG OVERMOLD (ONLY POWER TER'L VER) molex SD-104250-001 | | | | | |
| | | | | | CHECKED BY KSKIM | DATE 2015/06/08 | | | | | | |
| | | | | | APPROVED BY YSKIM02 | DATE 2015/06/18 | | | | | | |
| | | | | | ANGULAR ± 1 ° | | MATERIAL NO. | | DOCUMENT NO. | | SHEET NO. | |
| | | | DRAFT WHERE APPLICABLE MUST REMAIN WITHIN DIMENSIONS | | SEE CHART | | THIS DRAWING CONTAINS INFORMATION THAT IS PROPRIETARY TO MOLEX INCORPORATED AND SHOULD NOT BE USED WITHOUT WRITTEN PERMISSION | | 1 OF 4 | | | |



MATED CONDITION



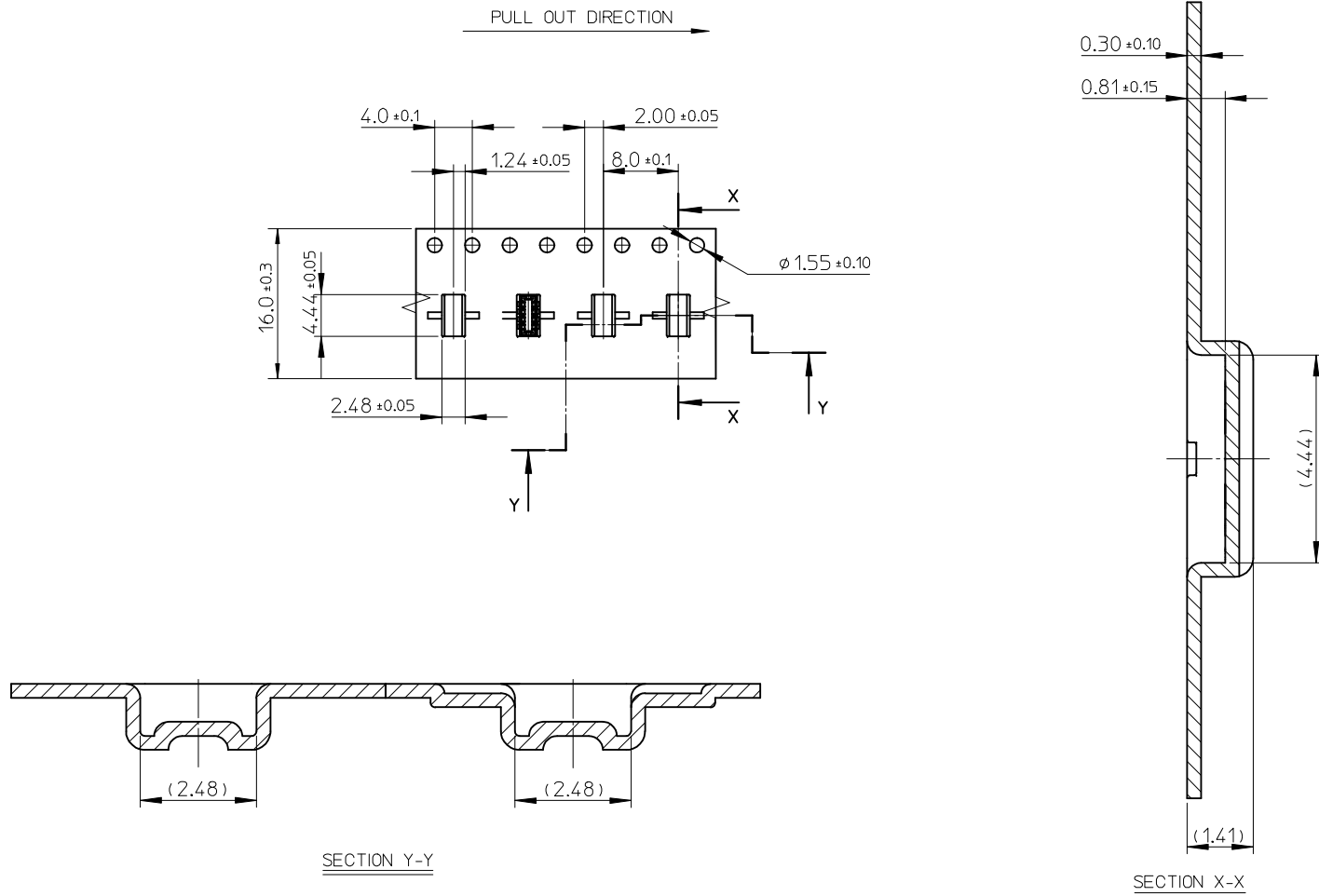
RECOMMENDED P.W.BOARD PATTERN LAYOUT (FOR REFERENCE)
RECOMMENDED THICKNESS OF METAL MASK: $t=0.1\text{mm}$
RECOMMENDED OPEN APERTURE RATIO OF METAL MASK:70%

※1

PROHIBITED AREA OF PATTERN WIRING AND SOLDER.
(FOR EACH AREA THE WIRING CAN NOT BE AVAILABLE.
AND COVERED WITH A FILM KEEP SOLDER OUT)

| | | | | | | | | | | | | | | | | | | | |
|---------|---------------------|---------------|---------------------|-------------|------------|----------------|------------|-------------|-----------------|---|--|---------------|--------------------|--|--|--------------|------------------------|--|--|
| REVISED | EC NO: KOR2017-0058 | DRWN: JHCHANG | 2017/05/31 | CHKD: KSKIM | 2017/06/02 | APPR: YSK IM02 | 2017/06/07 | DESCRIPTION | QUALITY SYMBOLS | GENERAL TOLERANCES (UNLESS SPECIFIED) | | | DIMENSION STYLE | | SCALE | DESIGN UNITS | THIRD ANGLE PROJECTION | | |
| | | | | | | | | | | | | | MM ONLY | | 20:1 | METRIC | | | |
| | | | | | | | | | | | | | DRAWN BY DATE | | TITLE 0.8 BB CONN H=0.75 BATTERY PLUG OVERMOLD (ONLY POWER TER'L VER) | | | | |
| | | | | | | | | | | | | | JHCHANG 2015/03/06 | | | | | | |
| | | | | | | | | | | | | | CHECKED BY DATE | | | | | | |
| | | | | | | | | | | | | | KSKIM 2015/06/08 | | | | | | |
| | | | | | | | | | | | | | APPROVED BY DATE | | | | | | |
| | | | YSK IM02 2015/06/18 | | | | | | | | | | | | | | | | |
| | | | | | | | | | | MATERIAL NO. | | DOCUMENT NO. | | | | SHEET NO. | | | |
| | | | | | | | | | | SEE SHEET1 | | SD-104250-001 | | | | 2 OF 4 | | | |
| | | | | | | | | | | THIS DRAWING CONTAINS INFORMATION THAT IS PROPRIETARY TO MOLEX INCORPORATED AND SHOULD NOT BE USED WITHOUT WRITTEN PERMISSION | | | | | | | | | |

CONFIDENTIAL



SECTION Y-Y

SECTION X-X

| | | | | | | | | | | | | | |
|--|--|--|--------------------|---|---------------------------------------|-----------|----------------------------|--|--|------------------------|------------------------|--|--|
| REVISED | EC NO: KOR2017-0058 DRWN: JHCHANG CHKD: KSKIM APPR: YSKIM02 | 2017/05/31 2017/06/02 2017/06/07 | DESCRIPTION REV | QUALITY SYMBOLS <div>FA=0</div> <div>FG=0</div> <div>FP=0</div> | GENERAL TOLERANCES (UNLESS SPECIFIED) | | DIMENSION STYLE MM ONLY | | SCALE 20:1 | DESIGN UNITS METRIC | THIRD ANGLE PROJECTION | | |
| | | | | | <div>mm</div> <div>INCH</div> | | DRAWN BY DATE | | TITLE 0.8 BB CONN H=0.75 BATTERY PLUG OVERMOLD (ONLY POWER TER'L VER) | | | | |
| | | | | | 4 PLACES ± --- ± --- | | JHCHANG 2015/03/06 | | | | | | |
| | | | | | 3 PLACES ± 0.1 ± --- | | CHECKED BY DATE | | | | | | |
| | | | | | 2 PLACES ± 0.15 ± --- | | KSKIM 2015/06/08 | | molex | | | | |
| 1 PLACE ± 0.2 ± --- | | APPROVED BY DATE | | | | | | | | | | | |
| 0 PLACE ± --- ± --- | | YSKIM02 2015/06/18 | | | | | | | | | | | |
| ANGULAR ± 1 ° | | MATERIAL NO. | | DOCUMENT NO. | | SHEET NO. | | | | | | | |
| DRAFT WHERE APPLICABLE MUST REMAIN WITHIN DIMENSIONS | | SEE SHEET1 | | SD-104250-001 | | 4 OF 4 | | | | | | | |
| D | | SIZE A3 | | THIS DRAWING CONTAINS INFORMATION THAT IS PROPRIETARY TO MOLEX INCORPORATED AND SHOULD NOT BE USED WITHOUT WRITTEN PERMISSION | | | | | | | | | |