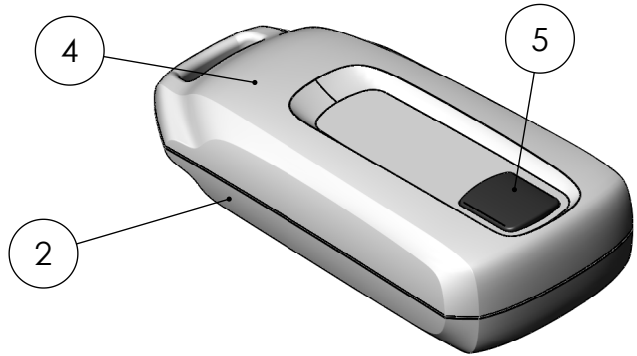
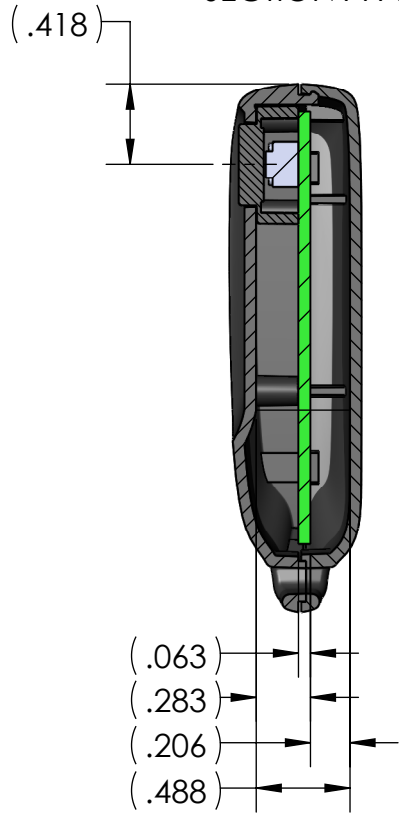
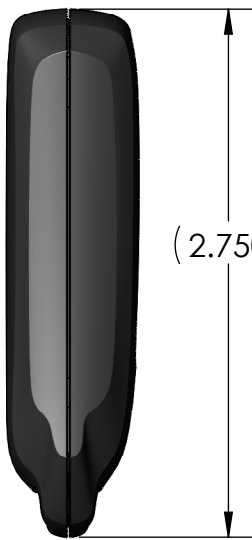
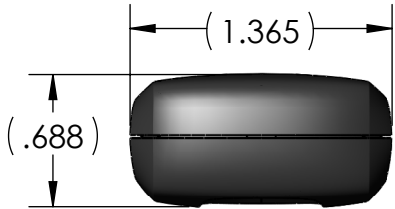
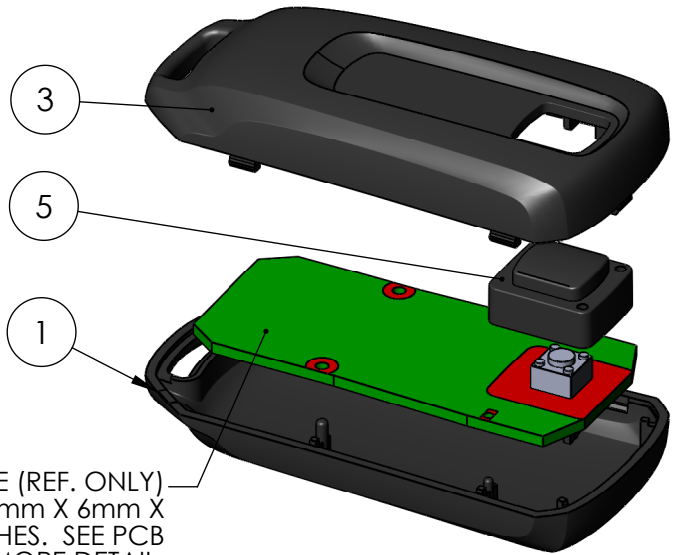


| ITEM NO. | PART NUMBER | Rev | DESCRIPTION     | Material                   | MaterialSpec  | Color       | FlameRating | FB-45-1/QTY. | FB-45-1*14/QTY. |
|----------|-------------|-----|-----------------|----------------------------|---------------|-------------|-------------|--------------|-----------------|
| 1        | FB-45B      | -   | BASE            | ABS                        | /ABS/PA765/BK | BLACK       | UL94V-0     | 1            | -               |
| 2        | FB-45B*14   | -   | BASE            | ABS                        | /ABS/PA765/WH | WHITE       | UL94V-0     | -            | 1               |
| 3        | FB-45C-1    | -   | COVER, 1 BUTTON | ABS                        | /ABS/PA765/BK | BLACK       | UL94V-0     | 1            | -               |
| 4        | FB-45C-1*14 | -   | COVER, 1 BUTTON | ABS                        | /ABS/PA765/WH | WHITE       | UL94V-0     | -            | 1               |
| 5        | FB-45PAD-1  | -   | 1 BUTTON KEYPAD | SHIN ETSU KE-951U Silicone |               | MATTE BLACK |             | 1            | 1               |





PART NUMBER: FB-45-1\*14  
FLAME RATING: UL94V-0



PART NUMBER: FB-45-1  
FLAME RATING: UL94V-0

FB-45-1-PCB: PCB TEMPLATE (REF. ONLY)  
DESIGNED FOR USE WITH 6mm X 6mm X  
4.3mm TACTILE SWITCHES. SEE PCB  
TEMPLATE DRAWING FOR MORE DETAIL.

|   |                         |        |   |   |              |          |
|---|-------------------------|--------|---|---|--------------|----------|
| UNLESS OTHERWISE SPECIFIED:<br>DIMENSIONS ARE IN: INCHES[mm]<br>TOLERANCES: ANGULAR: ±2°<br>TWO PLACE DECIMAL: ±.010<br>THREE PLACE DECIMAL: ±.005<br>PRINTED GRAPHICS: ±.010   | PART NO.<br>FB-45-1     |        | <br>1305 CHESTER IND. PARKWAY AVON, OHIO 44011-1083 U.S.A.<br>PH#: 1-800-248-1233, 440-934-0444 FAX#: 440-934-0088 |   |              |          |
|   | MATERIAL                |        |   |   |              |          |
| PROPRIETARY AND CONFIDENTIAL<br>THE INFORMATION CONTAINED IN THIS<br>DRAWING IS THE SOLE PROPERTY OF<br>POLYCASE. ANY REPRODUCTION IN PART<br>OR AS A WHOLE WITHOUT THE WRITTEN<br>PERMISSION OF POLYCASE IS PROHIBITED.<br>CAD FILE: FB-45-1 | FLAME RATING<br>UL94V-0 |        | SIZE<br><b>B</b>  | FB-45, 1 BUTTON   |              | REV<br>- |
|   |                         | NAME   | DATE  |   |              |          |
|   | DRAWN                   | D.M.F. | 6/13/2011   |   |              |          |
|   | CHECKED                 | B.M.B. | 9/8/2011  |   |              |          |
|   |                         |        | SCALE: 1:1  |  | SHEET 1 OF 1 |          |

| REV.      | DESCRIPTION | ZONE | BY | APPR'D | DATE |
|-----------|-------------|------|----|--------|------|
| REVISIONS |             |      |    |        |      |

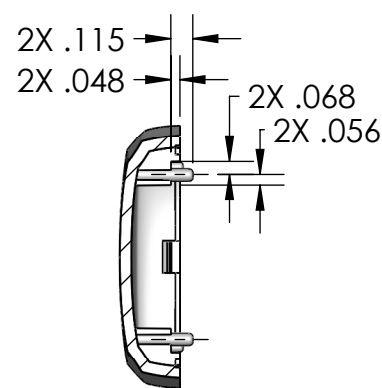
| TOLERANCE CHART |       |                |                    |  |
|-----------------|-------|----------------|--------------------|--|
| DIMENSION RANGE |       | 6 SIGMA        |                    |  |
|                 |       | TOOL DEPENDENT | NON-TOOL DEPENDENT |  |
| .000            | .040  | ±.0018         | ±.0042             |  |
| .040            | .120  | ±.0024         | ±.0054             |  |
| .120            | .240  | ±.0030         | ±.0060             |  |
| .240            | .390  | ±.0036         | ±.0066             |  |
| .390            | .590  | ±.0042         | ±.0072             |  |
| .590            | .870  | ±.0048         | ±.0072             |  |
| .870            | 1.180 | ±.0054         | ±.0078             |  |
| 1.180           | 1.570 | ±.0060         | ±.0084             |  |
| 1.570           | 2.090 | ±.0072         | ±.0096             |  |
| 2.090           | 2.760 | ±.0078         | ±.0108             |  |
| 2.760           | 3.540 | ±.0090         | ±.0120             |  |
| 3.540           | 4.700 | ±.0108         | ±.0132             |  |
| 4.700           | 6.300 | ±.0126         | ±.0150             |  |
| 6.300           | 7.870 | ±.0150         | ±.0180             |  |

D

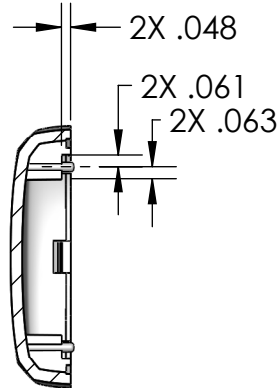
C

B

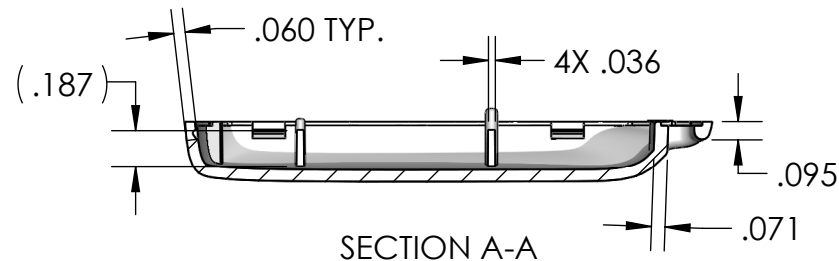
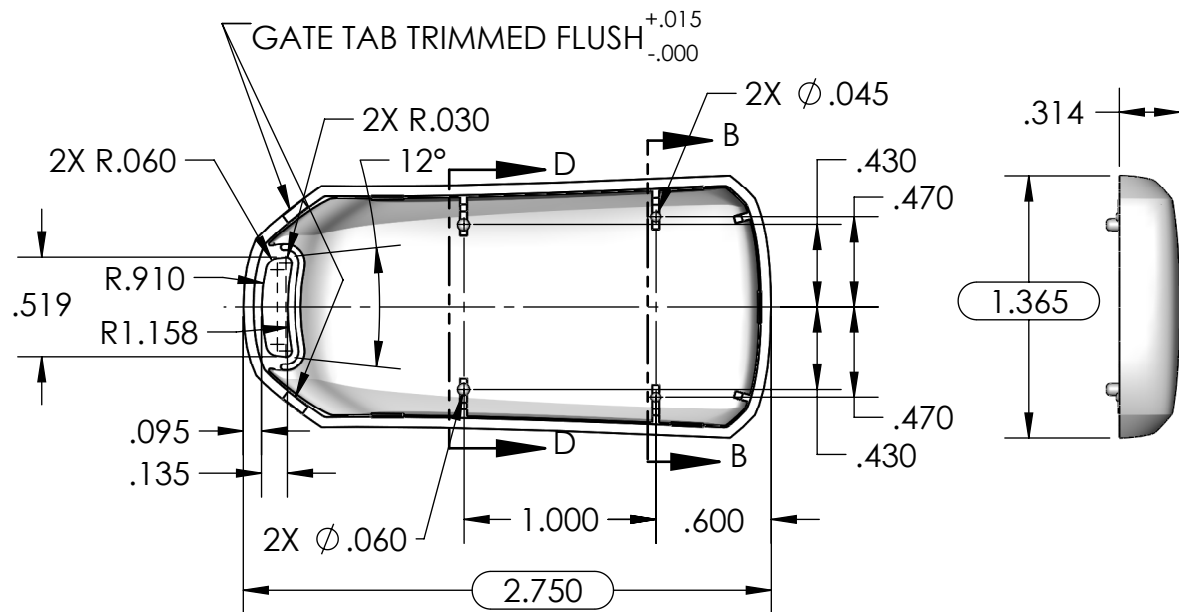
A



SECTION D-D



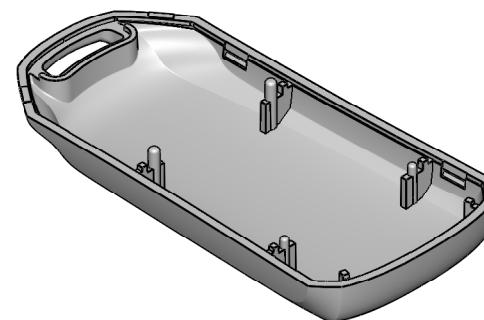
SECTION B-B



SECTION A-A




PART NUMBER: FB-45B  
MATERIAL: ABS  
MATERIAL SPEC: /ABS/PA765/BK  
COLOR: BLACK  
FLAME RATING: UL94V-0



PART NUMBER: FB-45B\*14  
MATERIAL: ABS  
MATERIAL SPEC: /ABS/PA765/WH  
COLOR: WHITE  
FLAME RATING: UL94V-0

- NOTES:
1. REFER TO SOLID MODEL FOR COMPLETE PART DEFINITION.
  2. (INSPECTION DIMENSION)
  3. EJECTOR PINS TO BE FLUSH ±.015
  4. FLASH NOT TO EXCEED .005

|  |  |                          |        |  |            |   |              |
|--|--|--------------------------|--------|--|------------|---|--------------|
| UNLESS OTHERWISE SPECIFIED:<br>DIMENSIONS ARE IN: INCHES[mm]<br>TOLERANCES: ANGULAR: ±2°<br>TWO PLACE DECIMAL: ±.010<br>THREE PLACE DECIMAL: ±.005<br>PRINTED GRAPHICS: ±.010  |  | PART NO.<br>AS NOTED     |        | <div><div>polycase</div><div>1305 CHESTER IND. PARKWAY AVON, OHIO 44011-1083 U.S.A.<br/>PH#: 1-800-248-1233, 440-934-0444 FAX#: 440-934-0088</div></div> |            |   |              |
|  |  | MATERIAL<br>AS NOTED     |        |  |            |   |              |
| PROPRIETARY AND CONFIDENTIAL<br>THE INFORMATION CONTAINED IN THIS<br>DRAWING IS THE SOLE PROPERTY OF<br>POLYCASE. ANY REPRODUCTION IN PART<br>OR AS A WHOLE WITHOUT THE WRITTEN<br>PERMISSION OF POLYCASE IS PROHIBITED.<br>CAD FILE: FB-45B |  | FLAME RATING<br>AS NOTED |        | SIZE<br><b>B</b>   | BASE       | REV<br>-  |              |
|  |  |                          |        |  |            |   |              |
|  |  | DRAWN                    | NAME   | DATE   |            |   |              |
|  |  | CHECKED                  | D.M.F. | 2/23/2011  |            |   |              |
|  |  |                          | B.M.B. | 3/15/2011  | SCALE: 1:1 |  | SHEET 1 OF 1 |

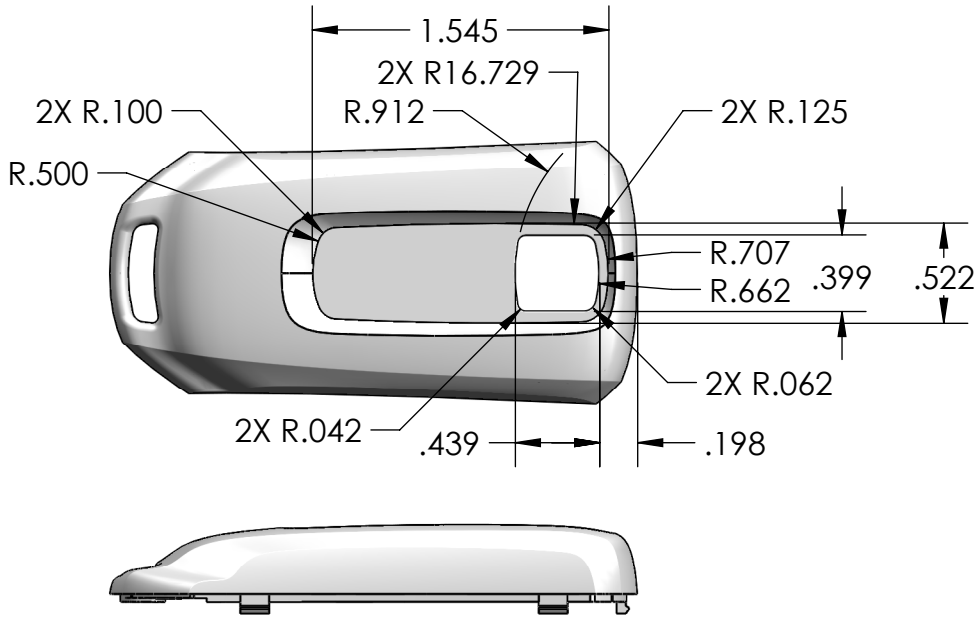
| TOLERANCE CHART |       |                |                    |  |
|-----------------|-------|----------------|--------------------|--|
| DIMENSION RANGE |       | 6 SIGMA        |                    |  |
|                 |       | TOOL DEPENDENT | NON-TOOL DEPENDENT |  |
| .000            | .040  | ±.0018         | ±.0042             |  |
| .040            | .120  | ±.0024         | ±.0054             |  |
| .120            | .240  | ±.0030         | ±.0060             |  |
| .240            | .390  | ±.0036         | ±.0066             |  |
| .390            | .590  | ±.0042         | ±.0072             |  |
| .590            | .870  | ±.0048         | ±.0072             |  |
| .870            | 1.180 | ±.0054         | ±.0078             |  |
| 1.180           | 1.570 | ±.0060         | ±.0084             |  |
| 1.570           | 2.090 | ±.0072         | ±.0096             |  |
| 2.090           | 2.760 | ±.0078         | ±.0108             |  |
| 2.760           | 3.540 | ±.0090         | ±.0120             |  |
| 3.540           | 4.700 | ±.0108         | ±.0132             |  |
| 4.700           | 6.300 | ±.0126         | ±.0150             |  |
| 6.300           | 7.870 | ±.0150         | ±.0180             |  |

D

C

B

A



PART NUMBER: FB-45C-1\*14  
MATERIAL: ABS  
MATERIAL SPEC: /ABS/PA765/WH  
COLOR: WHITE  
FLAME RATING: UL94V-0

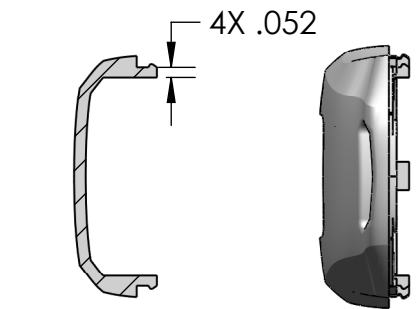
PART NUMBER: FB-45C-1  
MATERIAL: ABS  
MATERIAL SPEC: /ABS/PA765/BK  
COLOR: BLACK  
FLAME RATING: UL94V-0

D

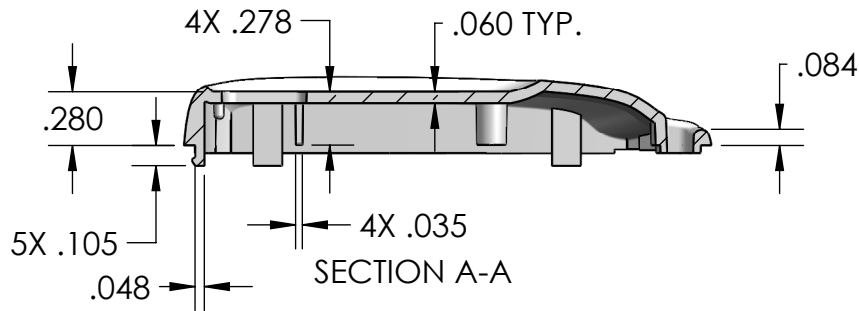
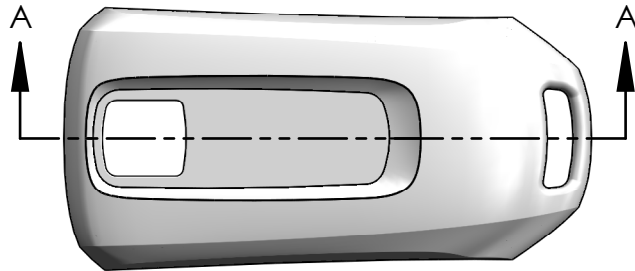
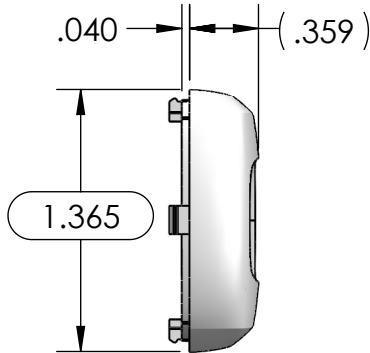
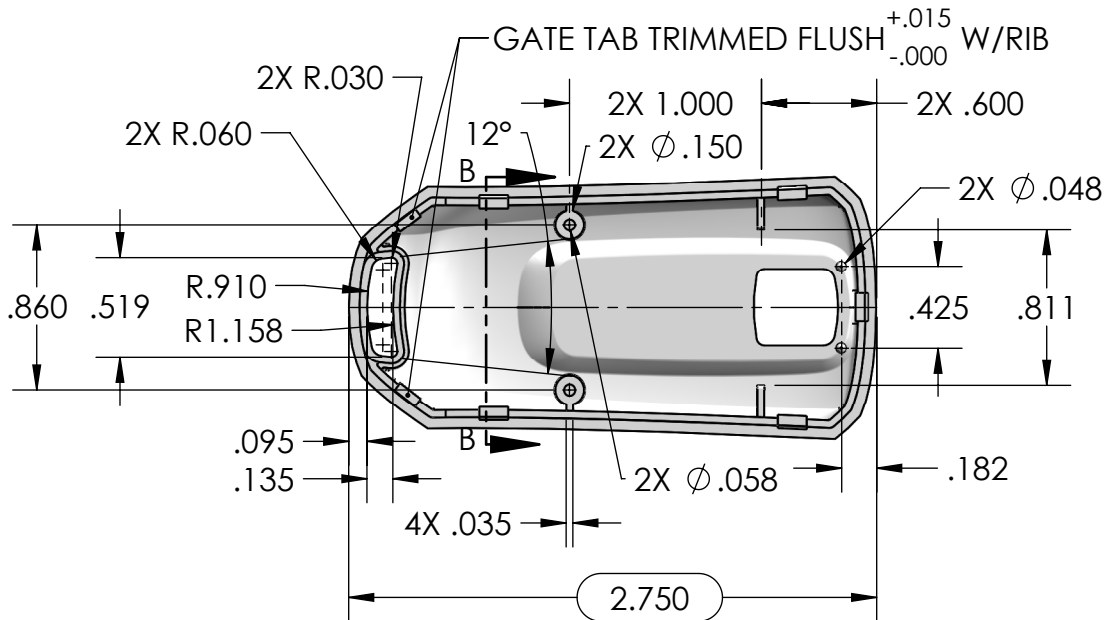
C

B



A

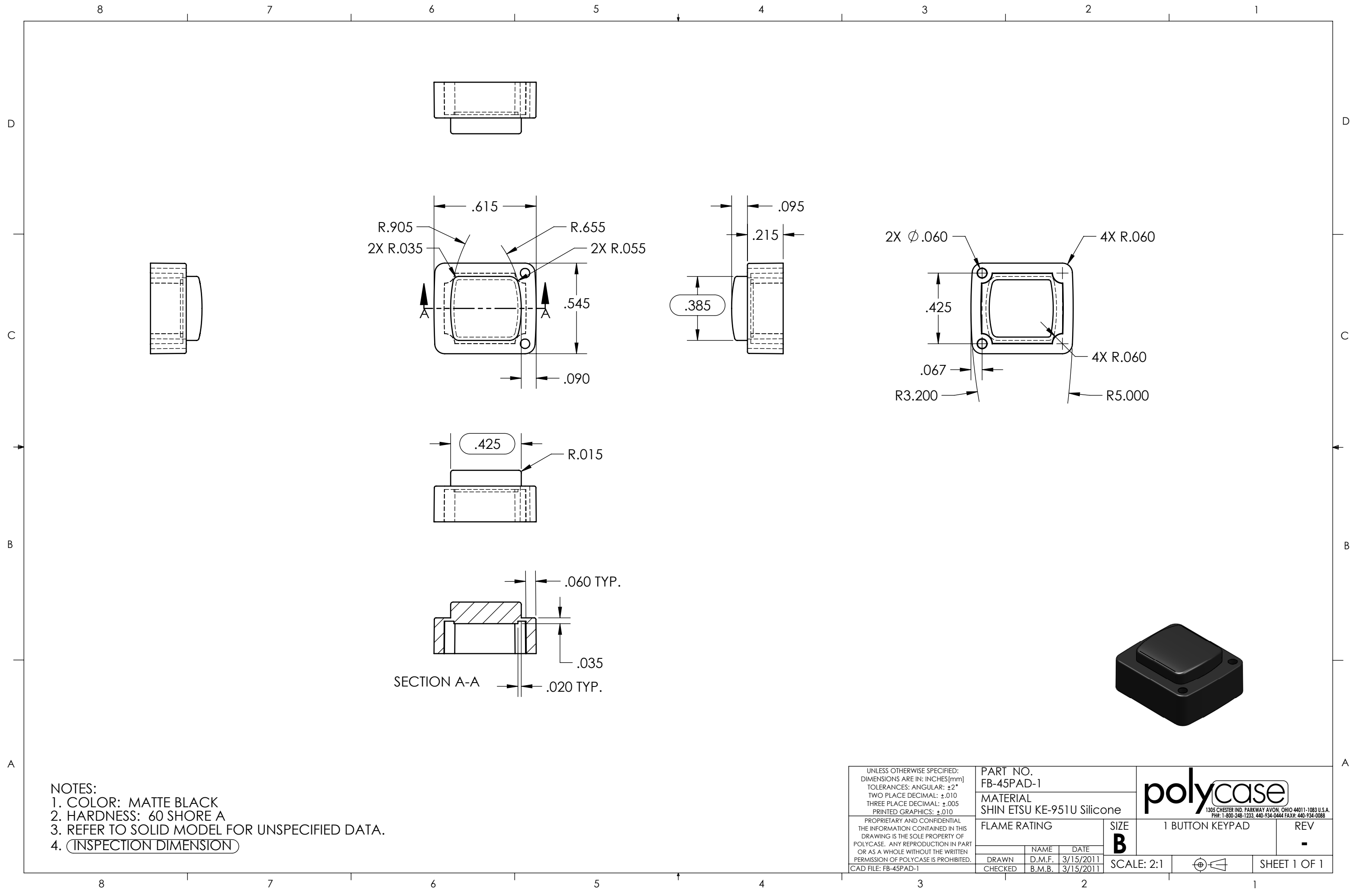


SECTION B-B

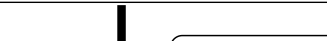
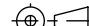


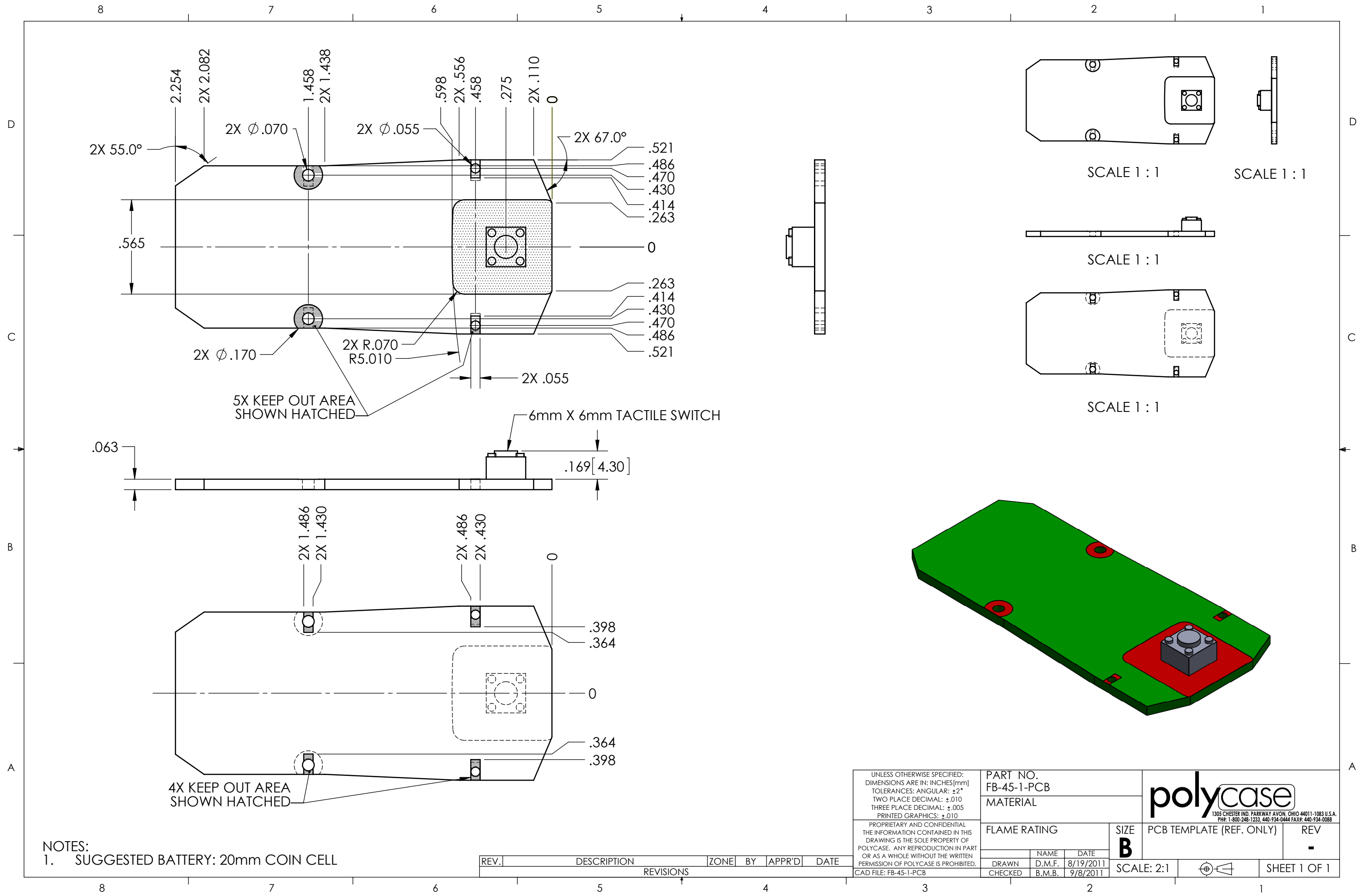
- NOTES:
- REFER TO SOLID MODEL FOR COMPLETE PART DEFINITION.
  - INSPECTION DIMENSION
  - EJECTOR PINS TO BE FLUSH ±.015
  - FLASH NOT TO EXCEED .005

|  |                          |        |                        |   |   |              |
|--|--------------------------|--------|------------------------|---|---|--------------|
| UNLESS OTHERWISE SPECIFIED:<br>DIMENSIONS ARE IN: INCHES[mm]<br>TOLERANCES: ANGULAR: ±2°<br>TWO PLACE DECIMAL: ±.010<br>THREE PLACE DECIMAL: ±.005<br>PRINTED GRAPHICS: ±.010  | PART NO.<br>AS NOTED     |        |                        | <br>1305 CHESTER IND. PARKWAY AVON, OHIO 44011-1083 U.S.A.<br>PH#: 1-800-248-1233, 440-934-0444 FAX#: 440-934-0088 |   |              |
|  | MATERIAL<br>AS NOTED     |        |                        |   |   |              |
| PROPRIETARY AND CONFIDENTIAL<br>THE INFORMATION CONTAINED IN THIS<br>DRAWING IS THE SOLE PROPERTY OF<br>POLYCASE. ANY REPRODUCTION IN PART<br>OR AS A WHOLE WITHOUT THE WRITTEN<br>PERMISSION OF POLYCASE IS PROHIBITED.<br>CAD FILE: FB-45C-1 | FLAME RATING<br>AS NOTED |        |                        | SIZE<br><b>B</b>  | COVER, 1 BUTTON   | REV<br>-     |
|  | DRAWN                    | NAME   | DATE                   | SCALE: 1:1  |  | SHEET 1 OF 1 |
|  | CHECKED                  | B.M.B. | 2/23/2011<br>3/15/2011 |   |   |              |



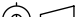
NOTES:  
1. COLOR: MATTE BLACK  
2. HARDNESS: 60 SHORE A  
3. REFER TO SOLID MODEL FOR UNSPECIFIED DATA.  
4. (INSPECTION DIMENSION)

|  |  |        |  |                 |   |
|--|--|--------|--|-----------------|---|
| UNLESS OTHERWISE SPECIFIED:<br>DIMENSIONS ARE IN: INCHES [mm]<br>TOLERANCES: ANGULAR: ±2°<br>TWO PLACE DECIMAL: ±.010<br>THREE PLACE DECIMAL: ±.005<br>PRINTED GRAPHICS: ±.010   | PART NO.<br>FB-45PAD-1                 |        | <div><br/>1305 CHESTER IND. PARKWAY AVON, OHIO 44011-1083 U.S.A.<br/>PH#: 1-800-248-1233, 440-934-0444 FAX#: 440-934-0088</div> |                 |   |
|  | MATERIAL<br>SHIN ETSU KE-951U Silicone |        |  |                 |   |
| PROPRIETARY AND CONFIDENTIAL<br>THE INFORMATION CONTAINED IN THIS<br>DRAWING IS THE SOLE PROPERTY OF<br>POLYCASE. ANY REPRODUCTION IN PART<br>OR AS A WHOLE WITHOUT THE WRITTEN<br>PERMISSION OF POLYCASE IS PROHIBITED.<br><br>CAD FILE: FB-45PAD-1 | FLAME RATING                           |        | SIZE<br><b>B</b>   | 1 BUTTON KEYPAD | REV<br>-  |
|  |  | NAME   | DATE   |                 |   |
|  | DRAWN                                  | D.M.F. | 3/15/2011  |                 |   |
|  | CHECKED                                | B.M.B. | 3/15/2011  | SCALE: 2:1      |  |



NOTES:  
1. SUGGESTED BATTERY: 20mm COIN CELL

| REV.      | DESCRIPTION | ZONE | BY | APPR'D | DATE |
|-----------|-------------|------|----|--------|------|
| REVISIONS |             |      |    |        |      |

|  |  |  |                         |  |  |  |                          |   |           |              |  |
|--|--|--|-------------------------|--|--|--|--------------------------|---|-----------|--------------|--|
| UNLESS OTHERWISE SPECIFIED:<br>DIMENSIONS ARE IN: INCHES [mm]<br>TOLERANCES: ANGULAR: ±2°<br>TWO PLACE DECIMAL: ±.010<br>THREE PLACE DECIMAL: ±.005<br>PRINTED GRAPHICS: ±.010   |  |  | PART NO.<br>FB-45-1-PCB |  |  | <div>polycase</div> <div>1305 CHESTER IND. PARKWAY AVON, OHIO 44011-1083 U.S.A.<br/>PH#: 1-800-248-1233, 440-934-0444 FAX#: 440-934-0088</div> |                          |   |           |              |  |
|  |  |  | MATERIAL                |  |  |  |                          |   |           |              |  |
| PROPRIETARY AND CONFIDENTIAL<br>THE INFORMATION CONTAINED IN THIS<br>DRAWING IS THE SOLE PROPERTY OF<br>POLYCASE. ANY REPRODUCTION IN PART<br>OR AS A WHOLE WITHOUT THE WRITTEN<br>PERMISSION OF POLYCASE IS PROHIBITED. |  |  | FLAME RATING            |  |  | SIZE<br><b>B</b>   | PCB TEMPLATE (REF. ONLY) |   | REV<br>-  |              |  |
|  |  |  |                         |  |  |  |                          |   |           |              |  |
|  |  |  | DRAWN                   |  |  | D.M.F.   |                          |   | 8/19/2011 |              |  |
|  |  |  | CHECKED                 |  |  | B.M.B.   |                          |   | 9/8/2011  |              |  |
| CAD FILE: FB-45-1-PCB  |  |  |                         |  |  | SCALE: 2:1   |                          |  |           | SHEET 1 OF 1 |  |

Enable 3D View