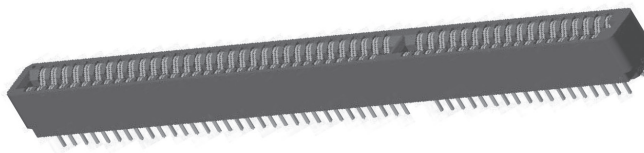




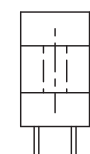
**.100" [2.54 mm] Contact Centers, .610" [15.49 mm] Insulator Height,  
[ISA] Dip Solder/Wire Wrap/Right Angle**

## SPECIFICATIONS

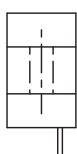
- Accommodates .062"  $\pm$  .008" [1.57 mm  $\pm$  0.20 mm] PC board
- PBT or PA9T insulator
- Molded-in key available
- 3 Amps current rating for one contact energized
- 30 milli Ohms maximum at rated current
- UL Flammability Rating: 94V-0



### READOUT



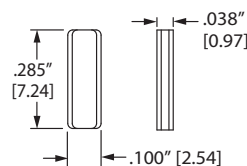
**DUAL (D)**



**HALF LOADED (H)**

### POLARIZING KEY

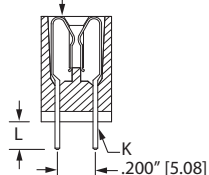
#### PLC-K1



**KEY IN BETWEEN CONTACTS  
(ORDER SEPARATELY)**

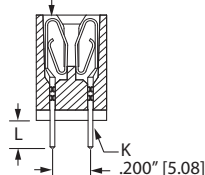
## TERMINATION TYPE

### HAIRPIN BELLOWS

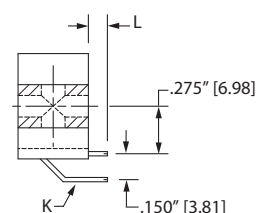


### HAIRPIN BELLOWS (CS,CM,CW,CT)

### LOOP BELLOWS



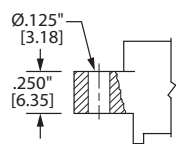
### LOOP BELLOWS (TK,RS,RM)



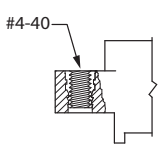
### RIGHT ANGLE, DIP SOLDER (CA,CB,CC,TA,TB,TM) -S605 MODIFICATION

HAIRPIN BELLOWS	LOOP	TERMINATION TYPE	POST CROSS SECTION K	POST LENGTH L .025" [0.64]	FITS MIN. HOLE SIZE
CM	TK, CK	DIP SOLDER	.025" [0.64] ROUND	.190" [4.83]	.033" [0.84]
	RS	DIP SOLDER	.025" [0.64] SQUARE	.190" [4.83]	.040" [1.02]
	RM	WIRE WRAP	.025" [0.64] SQUARE	.560" [14.20]	.040" [1.02]
CA	TA	RIGHT ANGLE	.025" [0.64] SQUARE	.100" [2.54]	.043" [1.09]
CB	TB	RIGHT ANGLE	.025" [0.64] SQUARE	.180" [4.57]	.043" [1.09]
CC	TM	RIGHT ANGLE	.025" [0.64] SQUARE	.250" [6.35]	.043" [1.09]
CW		DIP SOLDER	.015" X .025" [0.38 X 0.64]	.125" [3.18]	.035" [0.89]
CT		DIP SOLDER	.015" X .025" [0.38 X 0.64]	.170" [4.32]	.035" [0.89]
CS		DIP SOLDER	.025" [0.64] SQUARE	.160" [4.06]	.040" [1.02]

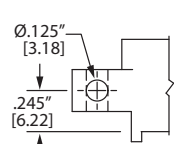
## MOUNTING STYLE



**CLEARANCE HOLE (H)**



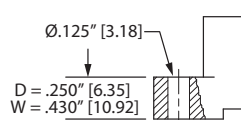
**THREADED INSERT (I)**



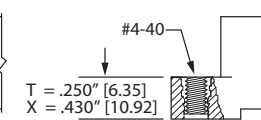
**SIDE MOUNTING (S)**



**NO MOUNTING EARS (N)**



**FLUSH MOUNTING (D, W)**



**FLUSH MOUNTING WITH THREADED INSERT (T, X)**



### .100" [2.54 mm] Contact Centers, .610" [15.49 mm] Insulator Height, [ISA] Dip Solder/Wire Wrap/Right Angle

#### PART NUMBER OPTIONS

##### MATERIALS (INSULATOR/CONTACT)

E = PBT/Phosphor Bronze (Standard)  
G = PA9T/Phosphor Bronze  
H = PBT/Beryllium Copper  
J = PA9T/Beryllium Copper  
(Consult factory for other materials.)  
Refer to Page 7 for Operating/Processing Temperatures

##### CONTACT FINISH - RoHS Compliant

All platings are Lead Free and have .000050" Nickel underplate

Contact Surface	Termination
B = .000010" Gold	.000100" Pure Tin, Matte
C = .000030" Gold	.000100" Pure Tin, Matte
G = .000010" Gold	.000005" Gold
Y = .000030" Gold	.000005" Gold
Contact Surface	Overall Plating
S = .000010" Gold	.000010" Gold
M = .000030" Gold	.000010" Gold
E = .000100" Pure Tin, Matte	.000100" Pure Tin, Matte

##### CONTACT CENTERS

C = .100" [2.54 mm]

##### NUMBER OF CONTACT POSITIONS

18, 31 or 49 (31/18)

##### READOUT (Opposite page)

D = Dual  
H = Half Loaded

E B C 49 D CW N - S420

##### MODIFICATION CODE (Consult Factory)

###### ISA WITH RETENTION FEATURE

-S524 = 18 Positions  
-S524 = 31 Positions  
-S518 = 49 Positions (31/18)

###### ISA WITHOUT RETENTION FEATURE

-S371 = 18 Positions  
-S371 = 31 Positions  
-S420 = 49 Positions (31/18) Dip Solder or Wire Wrap  
-S605 = 49 Positions (31/18) Right Angle\*\*

##### MOUNTING STYLE (Opposite Page)

H = Clearance Holes  
I = Threaded Inserts  
S = Side Mounting  
N = No Mounting  
D, W = Flush Mounting  
T, X = Flush Mounting With Threaded Inserts

##### TERMINATION TYPE (Opposite Page)

###### Hairpin Bellows \*

CS = .025" [0.64 mm] Square Dip Solder  
CM = .025" [0.64 mm] Square Wire Wrap  
CA, CB, CC = .025" [0.64 mm] Square Right Angle  
CW, CT = .015" X .025" [0.38 mm X 0.64 mm] Dip Solder

###### Loop Bellows

RS = .025" [0.64 mm] Square Dip Solder  
TK = .025" [0.64 mm] Round Dip Solder  
RM = .025" [0.64 mm] Square Wire Wrap  
TA, TB, TM = .025" [0.64 mm] Square Right Angle

\* Available in B or C Plating and Phosphor Bronze only  
Consult Factory for Cantilever Terminations

#### DIMENSIONS Dimensions in [ ] are in millimeters, all others are in inches.

