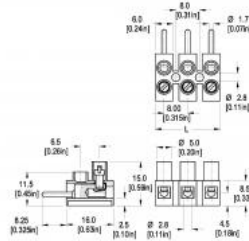




PLUG-IN SCREW CONNECTOR SYSTEM FOR PRINTED CIRCUIT BOARDS

**302-SV (-DS)**  
 8.00 mm (0.315 in) Spacing - 1-12 poles

[Print this page](#)



[Distributor stock check](#)

[additional photos](#)

[view 3d model](#)

[TECHNICAL INFORMATION](#)

[APPROVAL INFORMATION](#)

[PLUGS WITH](#)

[HOW TO ORDER](#)

**Description**

Plug  
 Standard version

**Technical Data**

**Center to Center Spacing:** 8.000 mm (0.315 in)  
**Nominal Cross Section:** 1.5 mm<sup>2</sup> (2325 mils<sup>2</sup>)  
**Wire Stripping Length:** 5.000 mm (0.197 in)

**Bill of Materials**

**Molding :** Polyamide, UL 94, V-2

**Color :** Off-white

**Temperature limits :** Short Time : 140 °C (284 °F)  
 Continuous : 105 °C (221 °F)  
 Low Limit : -40 °C (-40 °F)

**Comparative Tracking Index :** CTI ≥ 600 V

**Oxygen Index Rating :** 25 %

**Terminal Body:** Nickel plated copper alloy

: Tin plated copper alloy

**Screw:** Slotted head, zinc plated blue passivated, steel substrate M2.6



**Visual Description**

RoHS WEEE Pb free surface compliant



**Approval Information**

UL File No. [E69841](#) | CSA File No. [LR24322](#)

	TYPE (Spacing)	Current (A)	Voltage (V)	Application Group	AWG	Screw Tightening Torque
	302-SV (-DS) 8.0 mm	7	300	B, D	20-14	3.5 lbf·in
	302-SV (-DS) 8.0 mm	10	300	B, D, E	26-12	0.4 Nm

UL 300V / C: if mounted on a suitable insulated surface, on standoffs, or equivalent means to maintain spacing from live parts to the mounting surface. Version DS is CSA certified for 26-14 AWG.

**International Approval Information**



**Plug-In Direction and Wire Entrance Parallel to PCB**

**Plug-in direction perpendicular to wire entry direction**



**TYPE 302-FB (-DS)**  
8.00 mm spacing - 1-12 poles



**TYPE 302-FLW-DS**  
8.00 mm spacing - 1-12 poles

**Please fill in the How to Order box**

- |   |          |
|---|----------|
| <input type="checkbox"/> Request Sample | Quantity |
| <input type="checkbox"/> Request Quote  | Quantity |

**302-SV**

Wire protector:

Select one

Poles:

Select one

**OPTIONS:**

- BS: Copper Alloy Screw
- CN: Consecutive Numbering (hot stamped numbers)
- G05: Gold Plating (5 micro inches)
- G30: Gold Plating (30 micro inches)
- PS: Zinc plated clear Passivated, steel substrate
- S30: Silver Plating (30 micro inches)
- SM: Special Marking (please provide sketch)

**Accessories**

[302-J Jumper Combs](#)

**Notes**

Plated component: terminal body

ADD TO CART