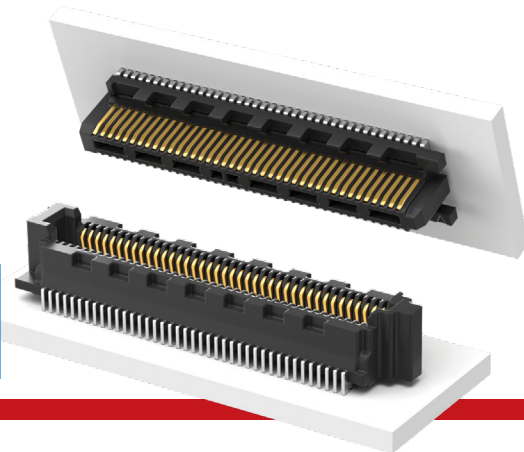


# MICRO BLADE & BEAM SOCKET & HEADER

(0.40 mm) .0158" PITCH • SS4/ST4 SERIES

28  
Gbps



**SS4**  
Mates:  
ST4

**ST4**  
Mates:  
SS4

## SPECIFICATIONS

### Insulator Material:

Black LCP

### Contact Material:

Phosphor Bronze

### Plating:

Au or Sn over  
50 μ" (1.27 μm) Ni

### Operating Temp Range:

-55 °C to +125 °C

### Current Rating:

1.6 A per pin  
(2 pins powered)

### Voltage Rating:

155 VAC/219 VDC

## PROCESSING

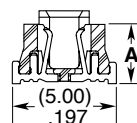
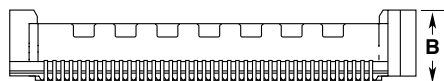
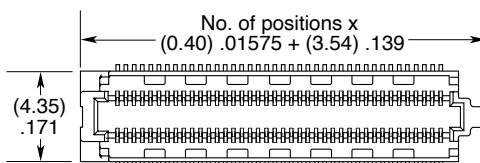
### Lead-Free Solderable:

Yes

### SMT Lead Coplanarity:

(0.10 mm) .004" max

SS4	POSITIONS PER ROW	LEAD STYLE	PLATING OPTION	D	K	"X"R
	-10, -20, -30, -40, -50	-3.00 = 3.00 mm  -3.50 = 3.50 mm	-L = 10 μ" (0.25 μm) Gold on contact, Matte Tin on tail		(Required in callout)  -K = (3.50 mm) .138" DIA Polyimide Film Pick & Place Pad	(Required in callout)  -TR = Tape & Reel  -FR = Full Reel Tape & Reel (must order max. quantity per reel; contact Samtec for quantity breaks)



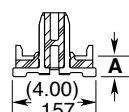
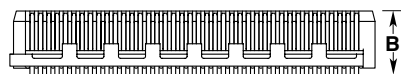
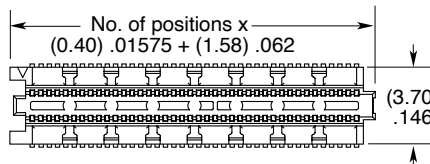
LEAD STYLE	A	B
-3.00	(2.85) .112	(3.50) .138
-3.50	(3.35) .132	(4.00) .157

ST4	POSITIONS PER ROW	LEAD STYLE	PLATING OPTION	D	P	"X"R
	-10, -20, -30, -40, -50	-1.00 = 1.00 mm  -1.50 = 1.50 mm  -2.50 = 2.50 mm	-L = 10 μ" (0.25 μm) Gold on contact, Matte Tin on tail		(Required in callout)  -P = Pick & Place Pad	(Required in callout)  -TR = Tape & Reel  -FR = Full Reel Tape & Reel (must order max. quantity per reel; contact Samtec for quantity breaks)

## MATED HEIGHT \*

ST4 LEAD STYLE	SS4 LEAD STYLE	
	-3.00	-3.50
-1.00	(4.00 mm) .157"	(4.50 mm) .177"
-1.50	(4.50 mm) .177"	(5.00 mm) .197"
-2.50	(5.50 mm) .217"	(6.00 mm) .236"

\*Processing conditions  
will affect mated height.



LEAD STYLE	A	B
-1.00	(1.00) .039	(3.08) .121
-1.50	(1.50) .059	(3.58) .141
-2.50	(2.50) .098	(4.58) .180

**Note:**  
Some lengths, styles and  
options are non-standard,  
non-returnable.