

TX810, 8-Channel, Current-Programmable, Low-Noise, Transmit/Receive Switch Evaluation Module

The TX810EVM evaluation module (EVM) provides a means to evaluate the functionality and performance of the TX810 transmit/receive switch. This user's guide contains the EVM printed-circuit board layout, schematic, and bill of materials. The document discusses the board configuration and jumper setup.

Contents

1	Introduction	2
2	Board Configuration	4
3	Jumper Setup	6
4	PCB Layout	7
5	Schematics	12
6	Bill of Materials	15

List of Figures

1	TX810EVM.....	2
2	TX810EVM Top View Diagram.....	3
3	Power Supply Header	4
4	DIP Switch for Manual Control of Bias Current	4
5	Header to Automated Control of Bias Current	5
6	Input Structure.....	5
7	Output Structure.....	6
8	Jumper J43	7
9	Jumper J53	7
10	Jumper J54	7
11	Top Layer – Signal.....	8
12	Bottom Layer – Signal.....	9
13	Layer 2 – Ground.....	10
14	Layer 3 – Power	11
15	Schematic Page 1 – Power and Bias Control	12
16	Schematic Page 2 – IO	13
17	Schematic Page 3 – DUT	14

List of Tables

1	Power Test Points	4
2	LED Indicators.....	4
3	Test Points TP22-PT24	4
4	J42 Pinout.....	5
5	Input SMA/Jumper Assignment	5
6	Output SMA/Jumper Assignment	6
7	Bill of Materials.....	15

1 Introduction

The TX810 is an 8-channel, current-programmable, low-noise, transmit/receive switch. It is capable of operating with $\pm 5\text{-V}$ or $+10\text{-V}/0\text{-V}$ power supplies. The TX810 provides a highly integrated solution for a wide range of ultrasound system applications. The TX810EVM (Figure 1) offers a means to evaluate the functionality and performance of the device.

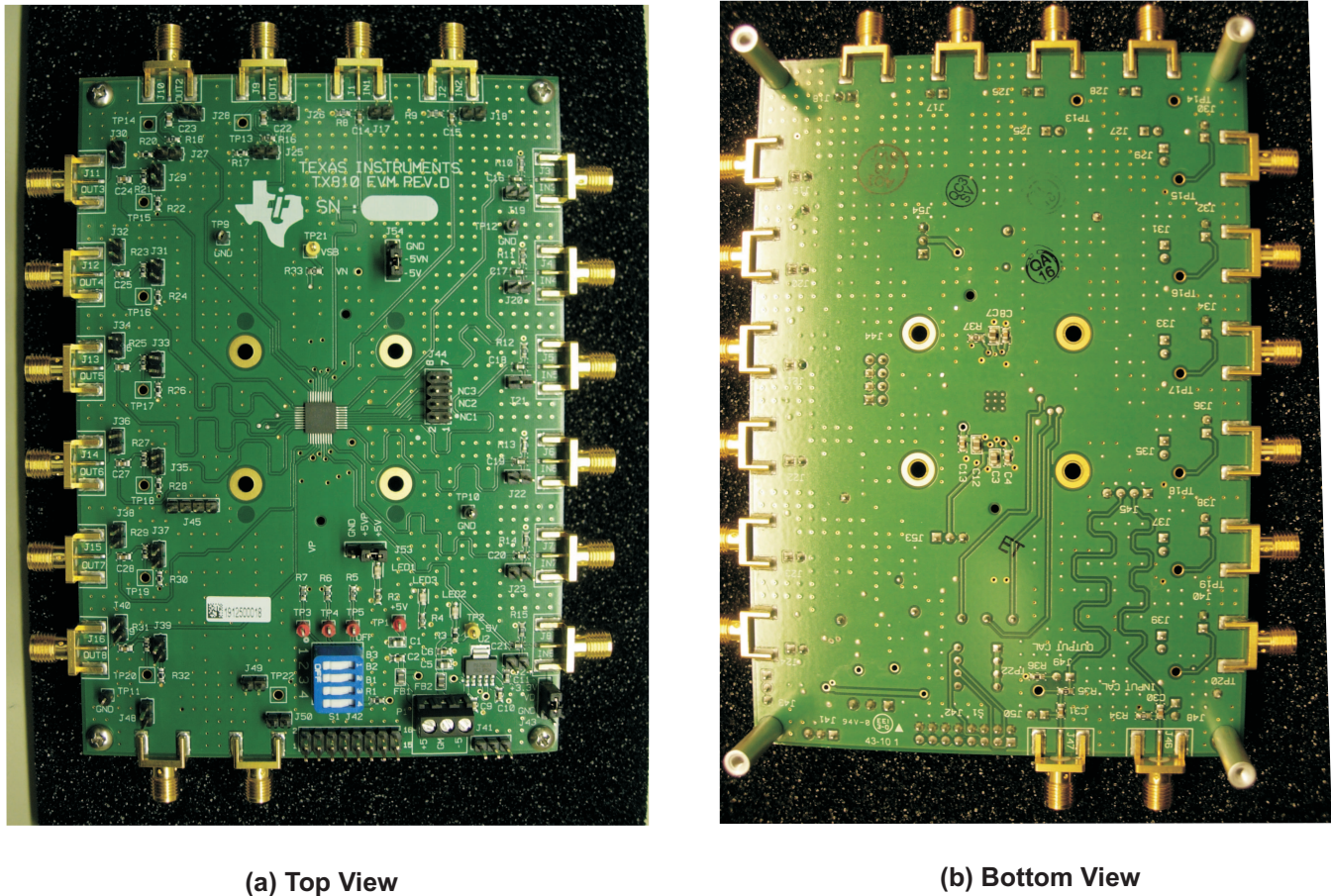


Figure 1. TX810EVM

1.1 Functionality

Figure 2 is the top diagrammatic view of the EVM. The EVM has eight inputs and eight outputs. The bias current is controlled by the dip switch (S1). The bias current also can be controlled by an external controller through the J42 header. S1 and J42 are mutually exclusive;; only one of them can be used, the other must be open. The power supply is connected through J41 header or P1.

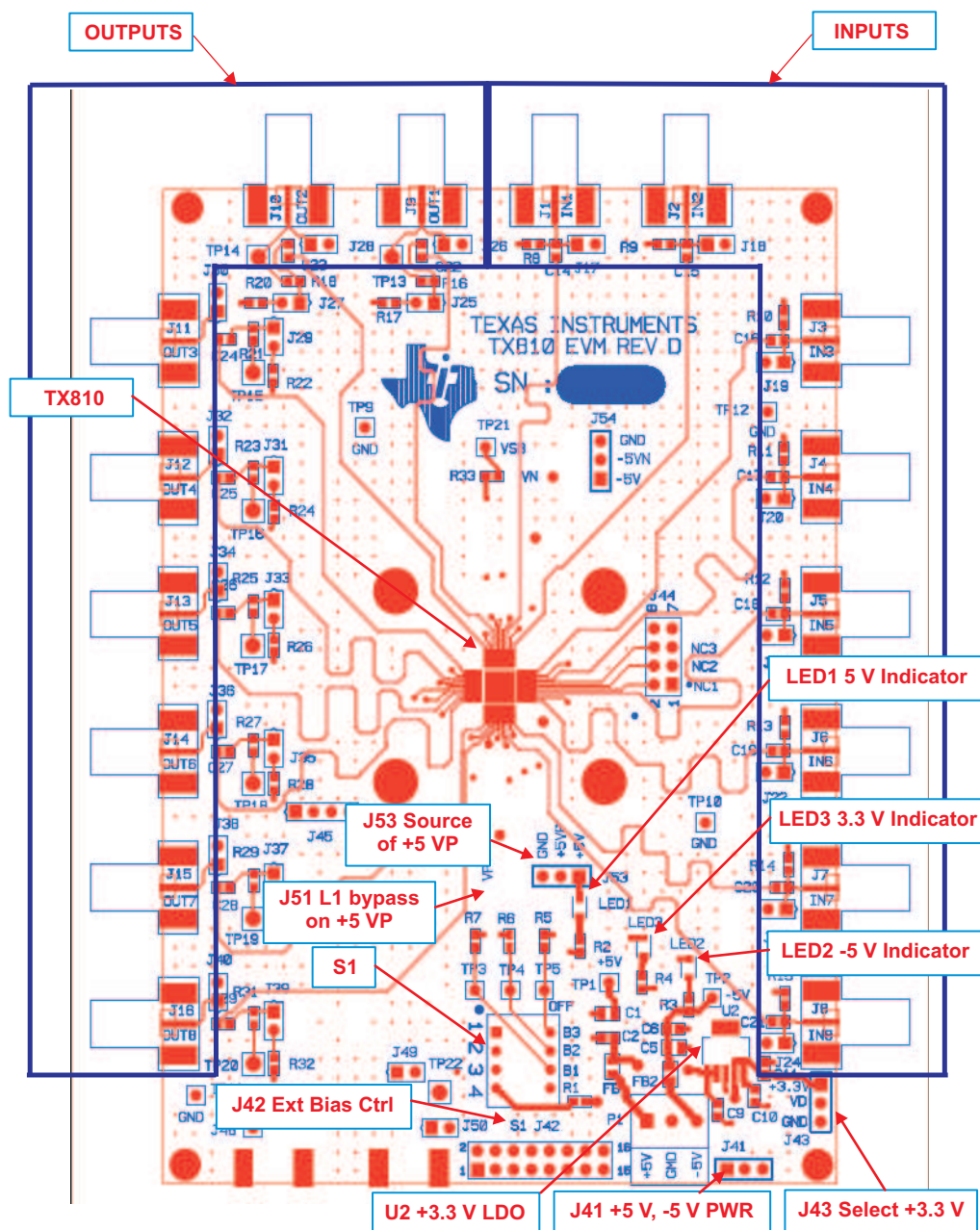


Figure 2. TX810EVM Top View Diagram

1.2 TX810EVM Kit Contents

The TX810EVM kit contains the following:

- TX810EVM board
- TX810EVM User's Guide (this document)

2 Board Configuration

2.1 Power Supplies

The current EVM requires +5-V and –5-V power supplies externally. The external power supplies are connected through the J41 header as indicated in [Figure 3](#). Two test points are for these input supplies: TP1 (+5 V) and TP2 (–5 V). No test point is available for +3.3 V. The user can measure pin 1 of header J43 to check the voltage level.



Figure 3. Power Supply Header

Table 1. Power Test Points

Test Point	Function
TP1	+5 V
TP2	–5 V

2.2 LED Indicators

The TX810EVM has three LEDs on the board as shown in [Figure 2](#). Their states demonstrate the normal operation of the TX810EVM.

Table 2. LED Indicators

LED	Indicated Functions
D1	+5-V power supply is on
D2	–5-V power supply is on
D3	+3.3-V regulator is working

2.3 Bias Current Control – Manual

The bias current is controlled by the pins B2, B1, and B0 of the device. The three pins are connected to the 4-pin DIP switch, S1 ([Figure 2](#)). The user can adjust the switches to set up the test conditions. Three test points (TP3 for B1, TP4 for B2, and TP5 for B3) are associated with the setting. One +3.3-V LDO, U2, ([Figure 2](#)) is on the board to provide the ON/OFF setting to B2, B1, and B0 pins of the device.

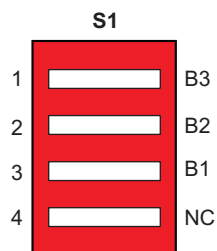


Figure 4. DIP Switch for Manual Control of Bias Current

Table 3. Test Points TP22-PT24

TEST POINTS	CONTROL PIN
TP3	B1
TP4	B2
TP5	B3

2.4 Bias Current Control – Programmable

The bias current can be controlled by an external pattern generator or a microcontroller through the J42 header (Figure 2). The same test points TP3, TP4, and TP5 are used to verify the setting of the associated B1, B2, and B3, respectively. Pin assignment of J42 is shown in Table 4.

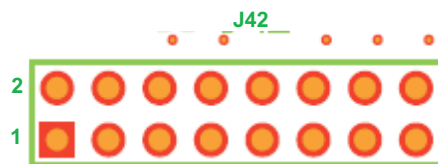


Figure 5. Header to Automated Control of Bias Current

Table 4. J42 Pinout

Pin	Signals
1	B1
2	GND
3	B2
4	GND
5	B3
6	GND
7	N/C
8	GND
9	N/C
10	GND
11	N/C
12	GND
13	N/C
14	GND
15	N/C
16	GND

2.5 Inputs

The EVM board has eight inputs. Each input has one SMA and one jumper as shown in Figure 6. The user can input the test signal through the SMA connector or through the two-pin header.

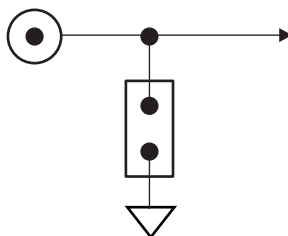


Figure 6. Input Structure

Table 5. Input SMA/Jumper Assignment

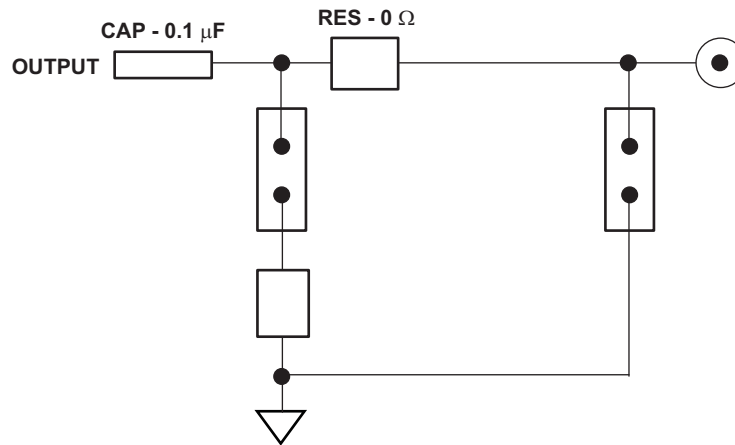
Input	SMA	Jumper
IN1	J1	J17
IN2	J2	J18
IN3	J3	J19

Table 5. Input SMA/Jumper Assignment (continued)

Input	SMA	Jumper
IN4	J4	J20
IN5	J5	J21
IN6	J6	J22
IN7	J7	J23
IN8	J8	J24

2.6 Outputs

The EVM board has eight outputs. The output structure is shown in [Figure 7](#). Each output has an SMA connector and two jumpers associated with it.


Figure 7. Output Structure
Table 6. Output SMA/Jumper Assignment

Output	SMA	Jumper	Jumper
OUT1	J9	J25	J26
OUT2	J10	J27	J28
OUT3	J11	J29	J30
OUT4	J12	J31	J32
OUT5	J13	J33	J34
OUT6	J14	J35	J36
OUT7	J15	J37	J38
OUT8	J16	J39	J40

3 Jumper Setup

Five jumpers are needed for typical operation. See [Figure 2](#) and [Figure 2](#) for the location on the board.. Jumpers J43, J53, and J54 need to be set up as shown in [Figure 8–Figure 10](#) depending on whether an external supply is used. Jumpers J52 and J51 bypass the filter inductor and must be installed.

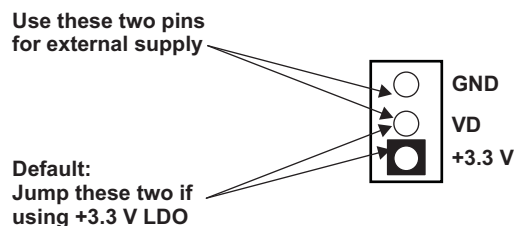


Figure 8. Jumper J43

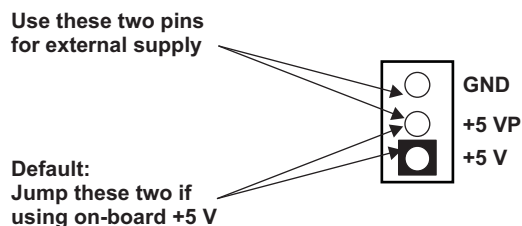


Figure 9. Jumper J53

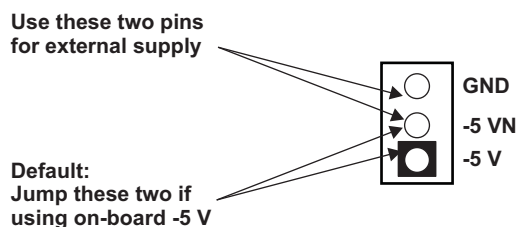


Figure 10. Jumper J54

4 PCB Layout

Figure 11 through Figure 14 illustrate this four-layer, printed-circuit board.

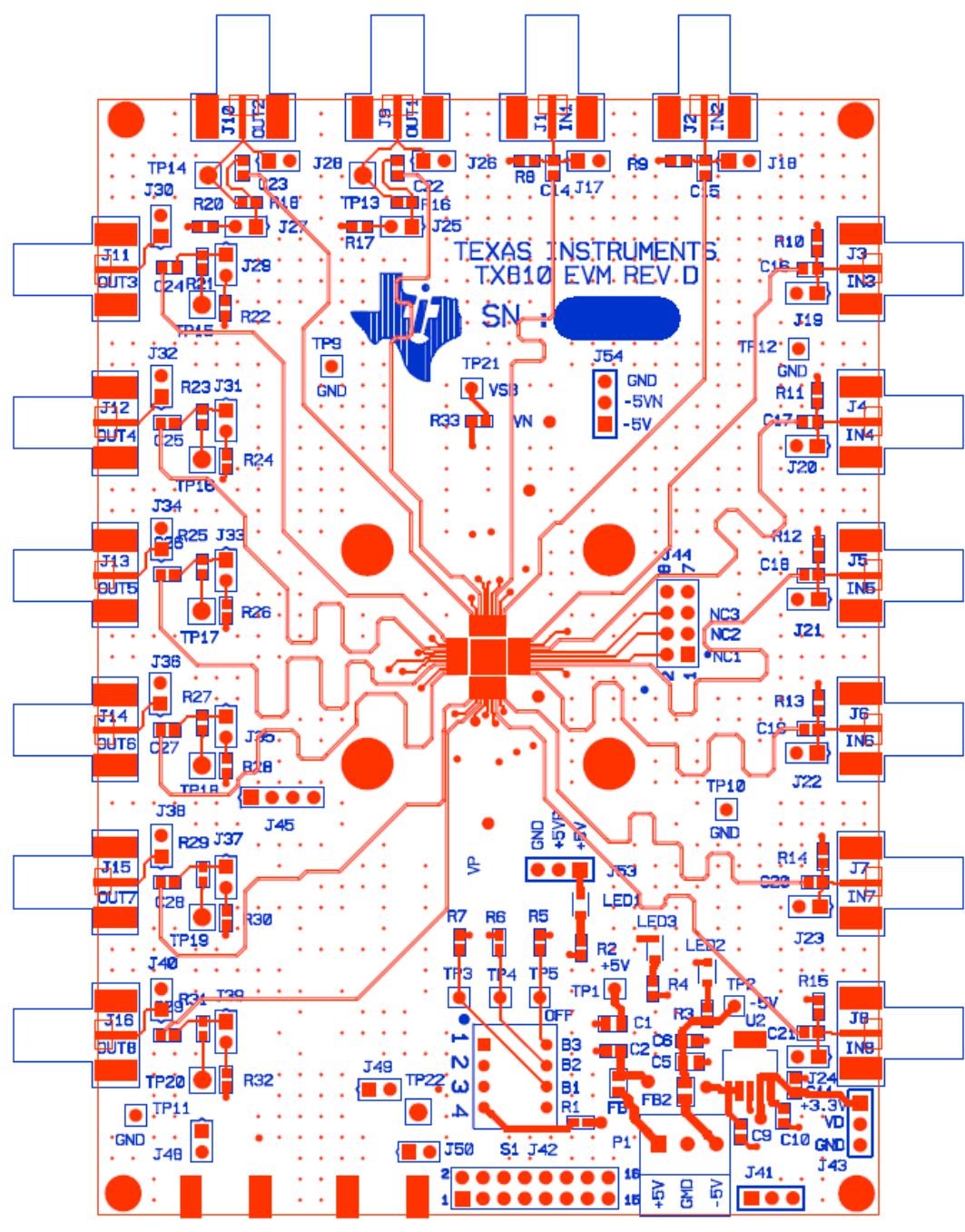


Figure 11. Top Layer – Signal

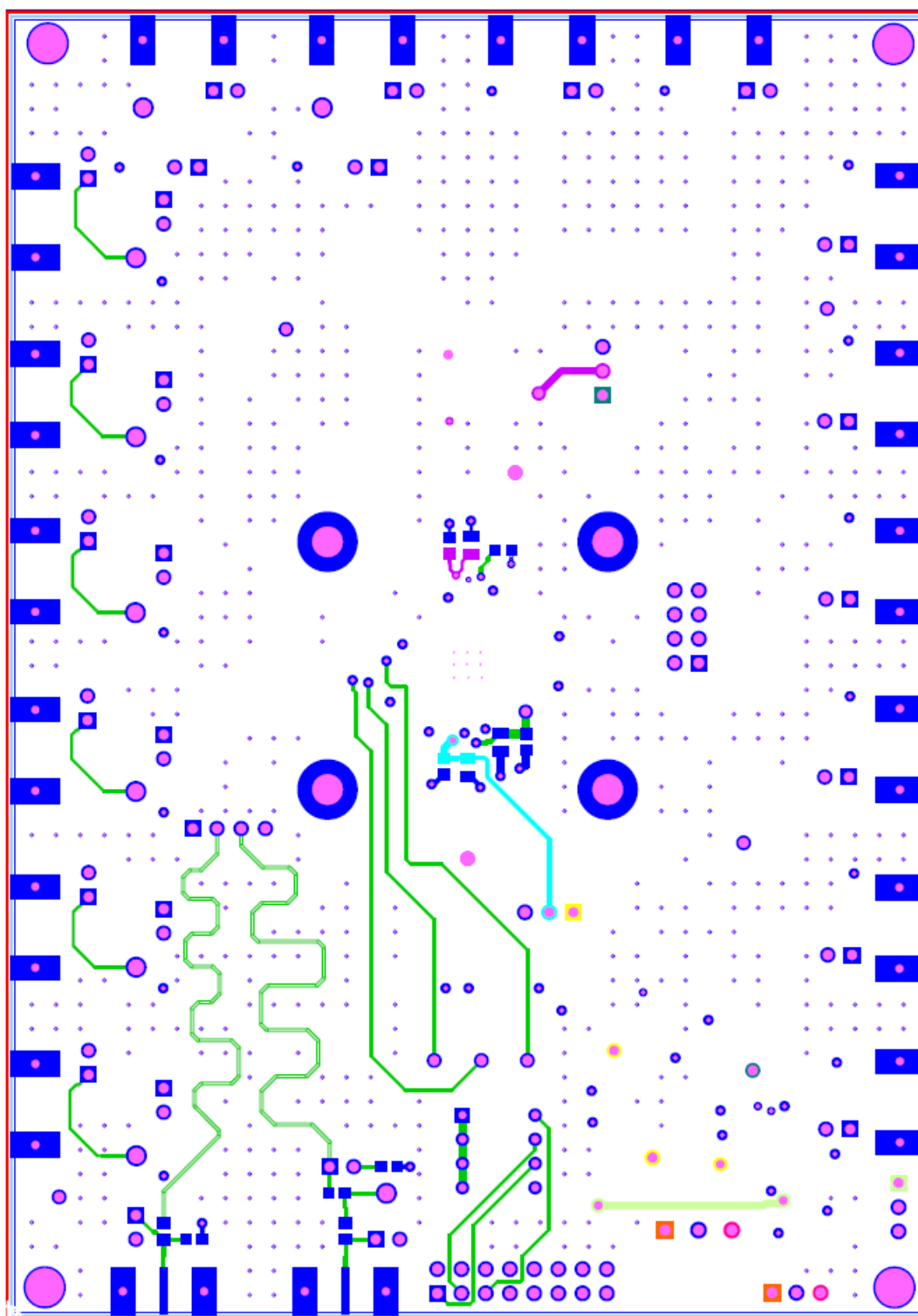


Figure 12. Bottom Layer – Signal

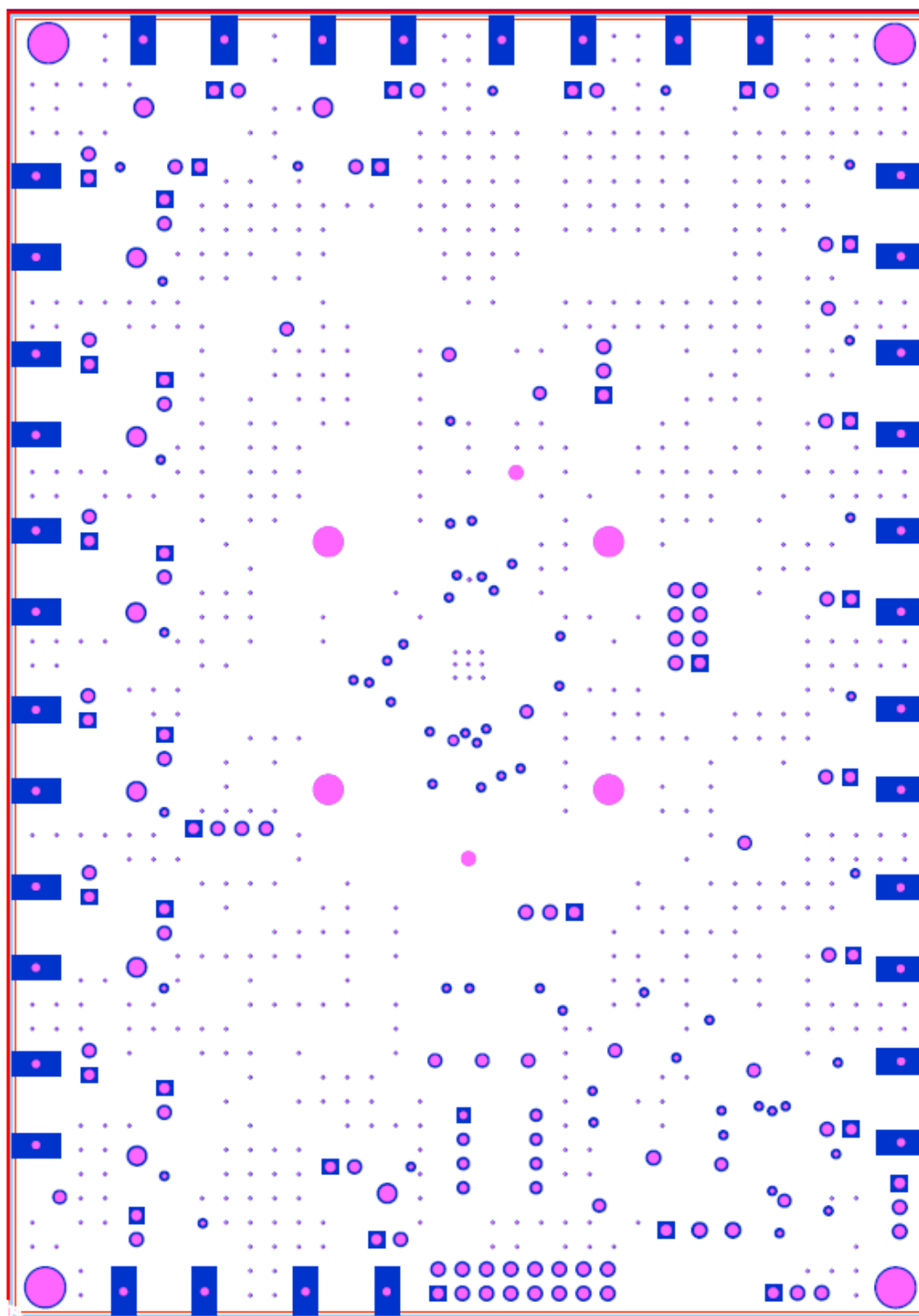


Figure 13. Layer 2 – Ground

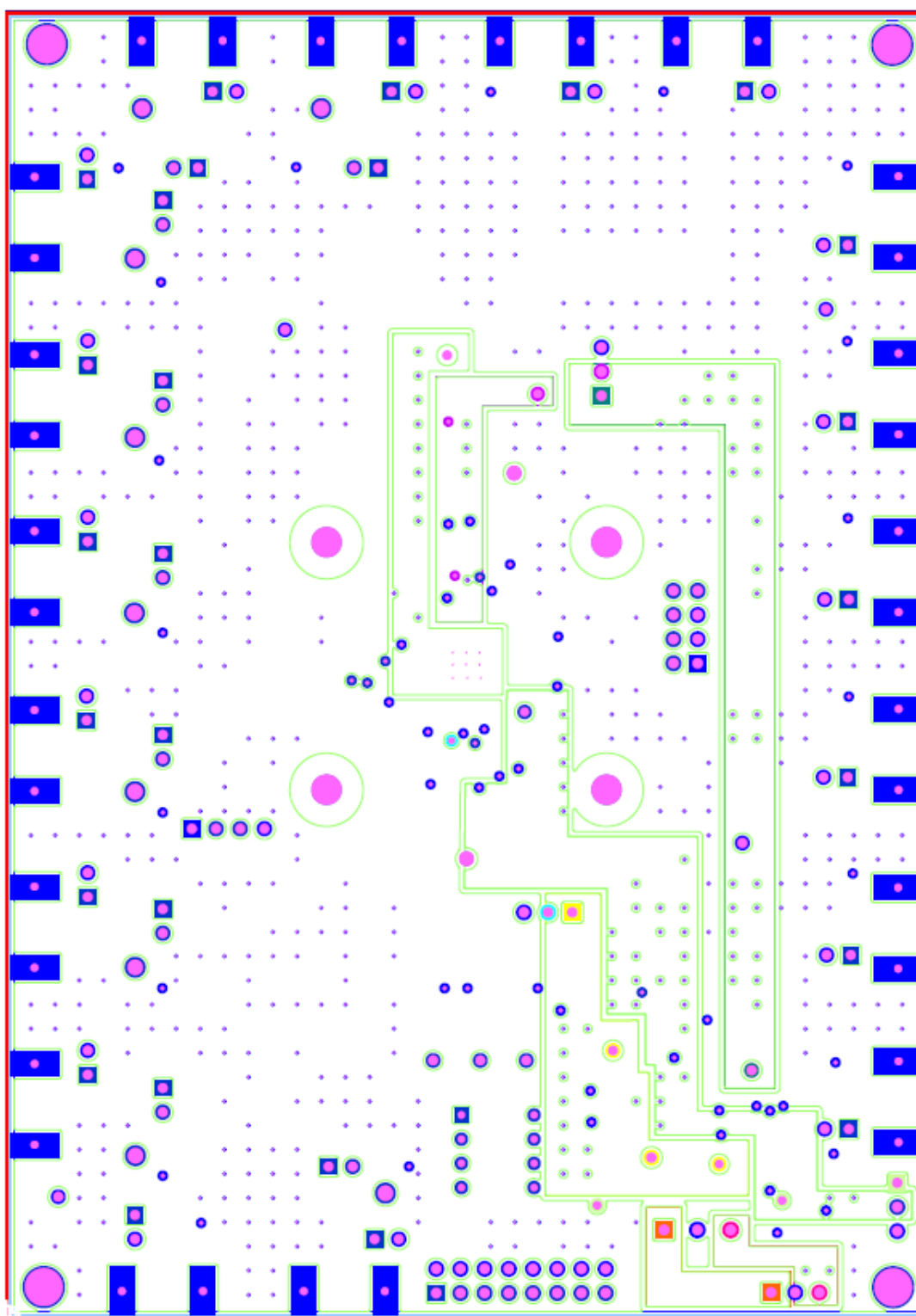


Figure 14. Layer 3 – Power

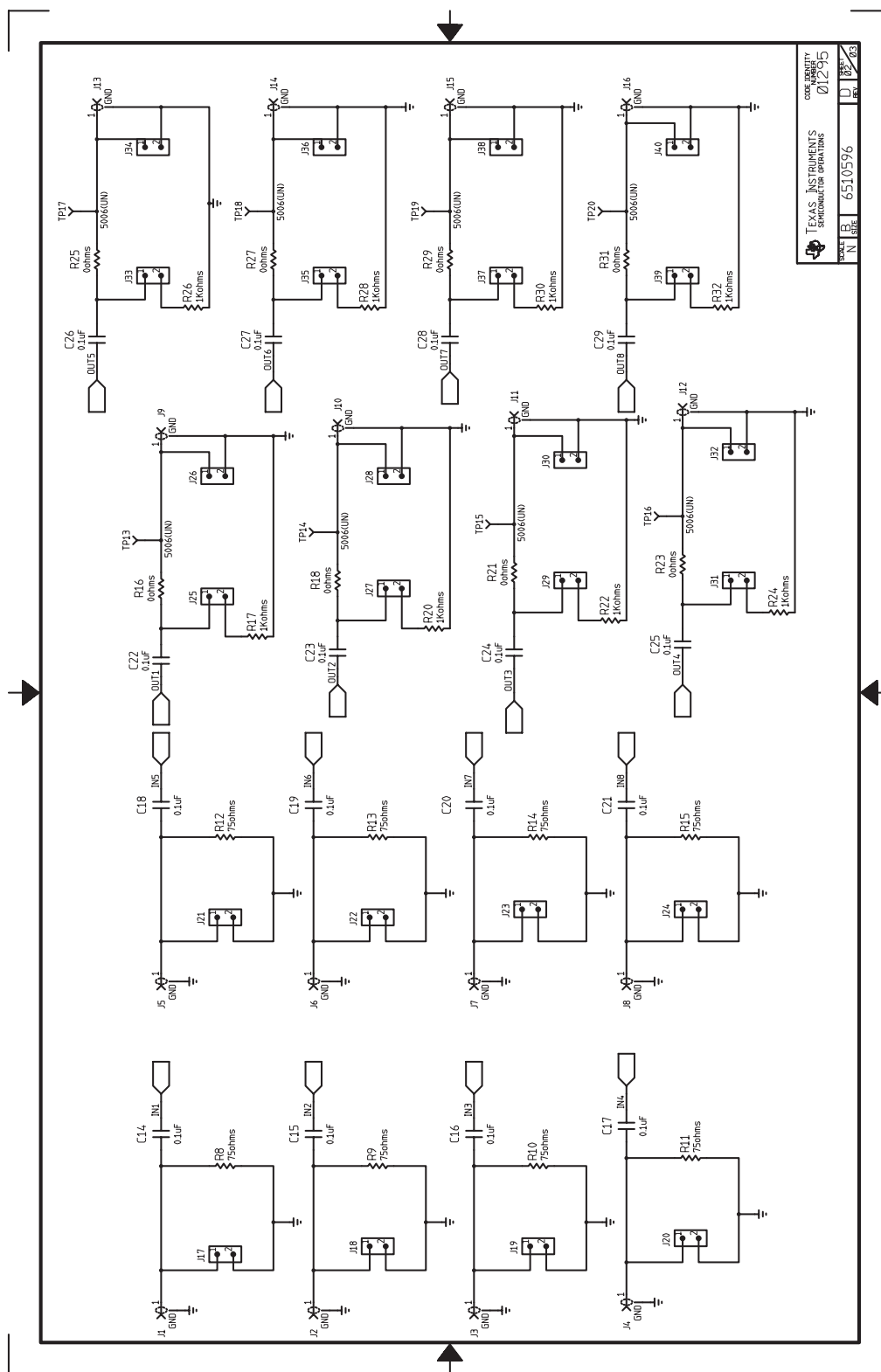
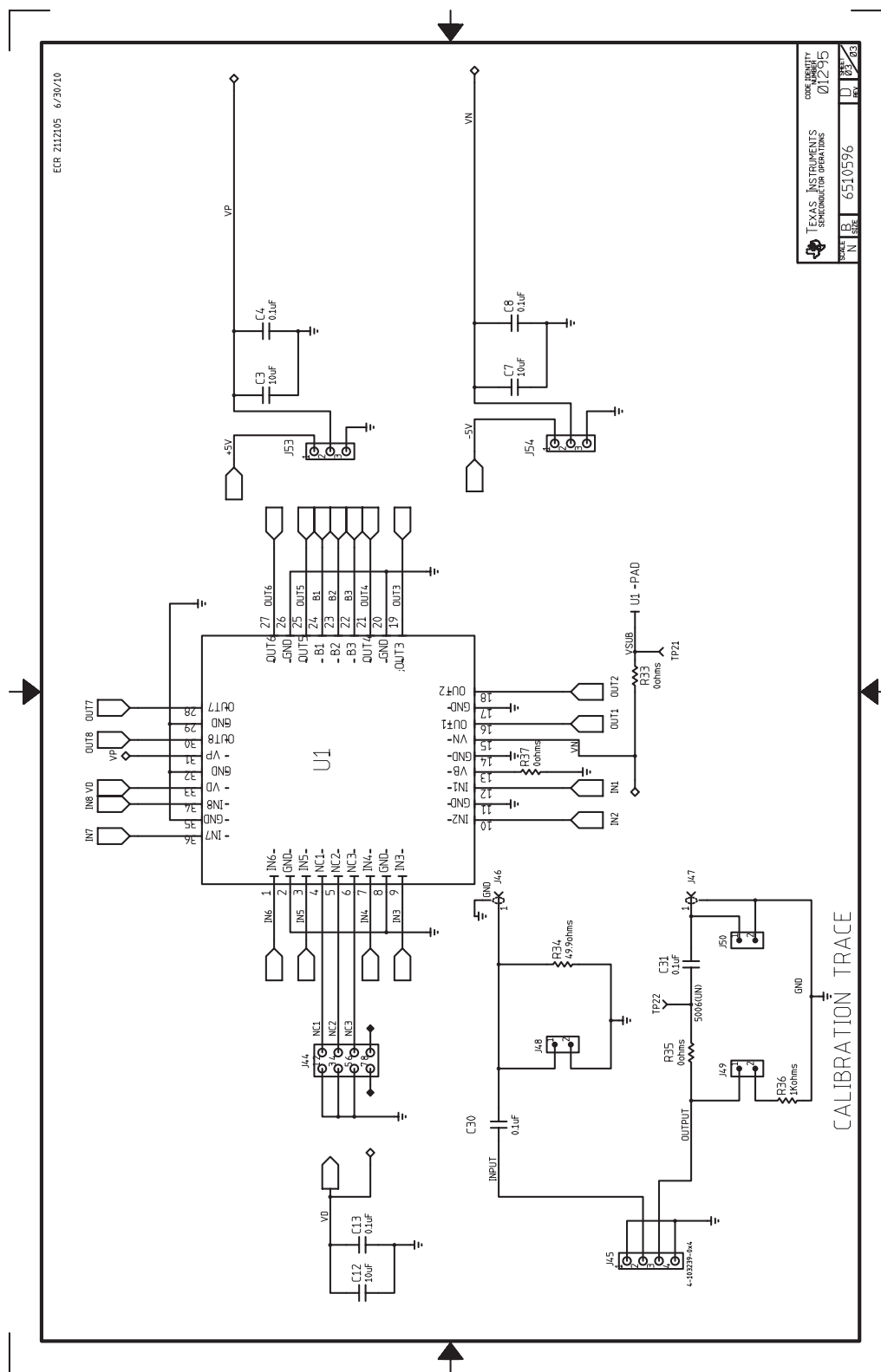


Figure 16. Schematic Page 2 – IO



6 Bill of Materials

Table 7. Bill of Materials

QTY	MFG	MFG PART#	REF DES	Description	Value or Function
REF	–	6510596D	–	ASSEMBLY	–
REF	–	6510596D	–	SCHEMATIC	–
1	NPI	6510596D	–	FABRICATION	–
REF	–	6510596D	–	ARTWORK	–
1	PANASONIC	ECJ-1VB0J475K	C11	CAP,SMT,0603	CAPACITOR,SMT,0603,CERAMIC,4.7µF,6.3V,10%,X5R
1	PANASONIC	ECJ-1VB1A105K	C9	CAP,SMT,0603	CAPACITOR,SMT,0603,CERAMIC,1.0µF,10V,10%,X5R
8	MURATA	GCM188R72A104KA64D	C14, C15, C16, C17, C18, C19, C20, C21,	CAP,SMT,0603,100V	CAPACITOR,SMT,0603,CERAMIC,100V,10%,0.1µF,X7R
15	PANASONIC	ECJ-1VB1H104K	C2, C4, C6, C8, C13, C22, C23, C24, C25, C26, C27, C28, C29, C30, C31	CAP,SMT,0603	CAPACITOR,SMT,0603,CERAMIC,50V,10%,0.1µF,X7R
1	MURATA	GRM39X7R103K25V	C10	CAP,SMT,0603	CAPACITOR,SMT,0603,CERAMIC,25V,10%,.01µF
5	MURATA	GRM21BR71A106KE51L	C1, C3, C5, C7, C12	CAP,SMT,0805	CAPACITOR,SMT,0805,CERAMIC,10µF,10V,10%,X7R
18	JOHNSON / EMERSON NETWORK	142-0701-801	J1, J2, J3, J4, J5, J6, J7, J8, J9, J10, J11, J12, J13, J14, J15, J16, J46, J47	CONNECTOR,SMT,2P	CONNECTOR,SMT,2P,SMA JACK RECEPTACLE, END LAUNCH,062PCB,GOLD
1	TI	TX810	U1	TX810 T/R SWITCH TEXAS INSTRUMENTS	T/R SWITCH
2	MURATA	BLM21AG331SN1	FB1, FB2	FERRITE BEAD,SMT,0805	CHIP INDUCTOR,SMT,0805,25%,200mA,330 Ω@100MHz
1	MOLEX	39357-0003	P1	HEADER, THRU, 3P	HEADER, THRU, POWER, 3P,3.5MM, EUROSTYLE
1	SAMTEC	TSW-104-07-G-D	J44	HEADER,THU	HEADER,THU,8P,2X4,MALE,DUAL ROW,100LS,100TL
1	SAMTEC	TSW-108-07-G-D	J42	HEADER,THU	HEADER,THU,16P,2X8,MALE,DUAL ROW,100LS,100TL
27	TYCO ELECTRONICS	4-103239-0x2	J17, J18, J19, J20, J21, J22, J23, J24, J25, J26, J27, J28, J29, J30, J31, J32, J33, J34, J35, J36, J37, J38, J39, J40, J48, J49, J50	HEADER,THU,JUMPER	MALE,2PIN,0.100CC MAKE FROM 4-103239-0x2
4	TYCO ELECTRONICS	4-103239-0x3	J41, J43, J53, J54	HEADER,THU,JUMPER	MAKE FROM 4-103239-0
1	TYCO ELECTRONICS	4-103239-0x4	J45	HEADER,THU,JUMPER	MAKE FROM 4-103239-0
1	TI	TPS79633DCQR	U2	IC,SMT,SOT223-6	ULTRALOW-NOISE HI PSRR FAST RF 1-A LDO LINEAR REGULATOR,3.3V
3	PANASONIC	LN1271R(TR)	LED1, LED2, LED3	LED,SMT,2P	RED,20mA
1	YAGEO	9C06031A6040FKHFT	R3	RES,SMT,0603	RESISTOR,SMT,0603,THICK FILM,604 Ω,1%,1/10W
9	VISHAY	CRCW06031001F	R17, R20, R22, R24, R26, R28, R30, R32, R36	RES,SMT,0603	RESISTOR,SMT,0603,1%,1/10W,1.00K
3	VISHAY	CRCW06031002F	R5, R6, R7	RES,SMT,0603	RESISTOR,SMT,0603,1%,1/10W,10.0K
1	VISHAY	CRCW0603200F	R4	RES,SMT,0603	RESISTOR,SMT,0603,1%,1/10W,200 Ω
1	VISHAY	CRCW0603332F	R2	RES,SMT,0603	RESISTOR,SMT,0603,1%,1/10W,332 Ω
8	VISHAY	CRCW060375F	R8, R9, R10, R11, R12, R13, R14, R15	RES,SMT,0603	RESISTOR,SMT,0603,1%,1/10W,75.0 Ω
11	PANASONIC	ERJ-3GEY0R00	R16, R18, R21, R23, R25, R27, R29, R31, R33, R35, R37	RES,SMT,0603	RESISTOR,SMT,0603,0 Ω,5%,ZERO Ω JUMPER
1	PANASONIC	ERJ-3GSYJ112	R1	RES,SMT,0603	RESISTOR,SMT,0603,5%,1/10W,1.1K
1	VISHAY	CRCW060349R9F	R34	RESISTOR,SMT,1/6W,0603	RESISTOR,SMT,0603,1%,1/10W,49.9 Ω
1	AMP	3-435668-4	S1	SWITCH,DIP,8P	SWITCH, SPST, DIP8
4	KEYSTONE ELECTRONICS	5000	TP1, TP3, TP4, TP5	TESTPOINT,THU,1P	TESTPOINT,THU,MINIATURE,0.1LS,120TL, RED
4	KEYSTONE ELECTRONICS	5001	TP9, TP10, TP11, TP12	TESTPOINT,THU,1P	TESTPOINT,THU,MINIATURE,0.1LS,120TL, BLACK
2	KEYSTONE ELECTRONICS	5004	TP2, TP21	TESTPOINT,THU,1P	TESTPOINT,THU,MINIATURE,0.1LS,120TL, YELLOW
9	KEYSTONE ELECTRONICS	5006(UN)	TP13, TP14, TP15, TP16, TP17, TP18, TP19, TP20, TP22	TESTPOINT,THU,1P	(UNINSTALLED PART)

NOTE: ASTERISK(*) NEXT TO PART MANUFACTURER'S NAME DENOTES POSSIBLE LONG LEAD TIME ITEM.

Evaluation Board/Kit Important Notice

Texas Instruments (TI) provides the enclosed product(s) under the following conditions:

This evaluation board/kit is intended for use for **ENGINEERING DEVELOPMENT, DEMONSTRATION, OR EVALUATION PURPOSES ONLY** and is not considered by TI to be a finished end-product fit for general consumer use. Persons handling the product(s) must have electronics training and observe good engineering practice standards. As such, the goods being provided are not intended to be complete in terms of required design-, marketing-, and/or manufacturing-related protective considerations, including product safety and environmental measures typically found in end products that incorporate such semiconductor components or circuit boards. This evaluation board/kit does not fall within the scope of the European Union directives regarding electromagnetic compatibility, restricted substances (RoHS), recycling (WEEE), FCC, CE or UL, and therefore may not meet the technical requirements of these directives or other related directives.

Should this evaluation board/kit not meet the specifications indicated in the User's Guide, the board/kit may be returned within 30 days from the date of delivery for a full refund. **THE FOREGOING WARRANTY IS THE EXCLUSIVE WARRANTY MADE BY SELLER TO BUYER AND IS IN LIEU OF ALL OTHER WARRANTIES, EXPRESSED, IMPLIED, OR STATUTORY, INCLUDING ANY WARRANTY OF MERCHANTABILITY OR FITNESS FOR ANY PARTICULAR PURPOSE.**

The user assumes all responsibility and liability for proper and safe handling of the goods. Further, the user indemnifies TI from all claims arising from the handling or use of the goods. Due to the open construction of the product, it is the user's responsibility to take any and all appropriate precautions with regard to electrostatic discharge.

EXCEPT TO THE EXTENT OF THE INDEMNITY SET FORTH ABOVE, NEITHER PARTY SHALL BE LIABLE TO THE OTHER FOR ANY INDIRECT, SPECIAL, INCIDENTAL, OR CONSEQUENTIAL DAMAGES.

TI currently deals with a variety of customers for products, and therefore our arrangement with the user **is not exclusive**.

TI assumes **no liability for applications assistance, customer product design, software performance, or infringement of patents or services described herein.**

Please read the User's Guide and, specifically, the Warnings and Restrictions notice in the User's Guide prior to handling the product. This notice contains important safety information about temperatures and voltages. For additional information on TI's environmental and/or safety programs, please contact the TI application engineer or visit www.ti.com/esh.

No license is granted under any patent right or other intellectual property right of TI covering or relating to any machine, process, or combination in which such TI products or services might be or are used.

FCC Warning

This evaluation board/kit is intended for use for **ENGINEERING DEVELOPMENT, DEMONSTRATION, OR EVALUATION PURPOSES ONLY** and is not considered by TI to be a finished end-product fit for general consumer use. It generates, uses, and can radiate radio frequency energy and has not been tested for compliance with the limits of computing devices pursuant to part 15 of FCC rules, which are designed to provide reasonable protection against radio frequency interference. Operation of this equipment in other environments may cause interference with radio communications, in which case the user at his own expense will be required to take whatever measures may be required to correct this interference.

EVM Warnings and Restrictions

It is important to operate this EVM within the input voltage range of -90 V to +90 V and the output voltage range of -2 V to +2 V .

Exceeding the specified input range may cause unexpected operation and/or irreversible damage to the EVM. If there are questions concerning the input range, please contact a TI field representative prior to connecting the input power.

Applying loads outside of the specified output range may result in unintended operation and/or possible permanent damage to the EVM. Please consult the EVM User's Guide prior to connecting any load to the EVM output. If there is uncertainty as to the load specification, please contact a TI field representative.

During normal operation, some circuit components may have case temperatures greater than 85° C. The EVM is designed to operate properly with certain components above 85° C as long as the input and output ranges are maintained. These components include but are not limited to linear regulators, switching transistors, pass transistors, and current sense resistors. These types of devices can be identified using the EVM schematic located in the EVM User's Guide. When placing measurement probes near these devices during operation, please be aware that these devices may be very warm to the touch.

Mailing Address: Texas Instruments, Post Office Box 655303, Dallas, Texas 75265
Copyright © 2011, Texas Instruments Incorporated

IMPORTANT NOTICE

Texas Instruments Incorporated and its subsidiaries (TI) reserve the right to make corrections, modifications, enhancements, improvements, and other changes to its products and services at any time and to discontinue any product or service without notice. Customers should obtain the latest relevant information before placing orders and should verify that such information is current and complete. All products are sold subject to TI's terms and conditions of sale supplied at the time of order acknowledgment.

TI warrants performance of its hardware products to the specifications applicable at the time of sale in accordance with TI's standard warranty. Testing and other quality control techniques are used to the extent TI deems necessary to support this warranty. Except where mandated by government requirements, testing of all parameters of each product is not necessarily performed.

TI assumes no liability for applications assistance or customer product design. Customers are responsible for their products and applications using TI components. To minimize the risks associated with customer products and applications, customers should provide adequate design and operating safeguards.

TI does not warrant or represent that any license, either express or implied, is granted under any TI patent right, copyright, mask work right, or other TI intellectual property right relating to any combination, machine, or process in which TI products or services are used. Information published by TI regarding third-party products or services does not constitute a license from TI to use such products or services or a warranty or endorsement thereof. Use of such information may require a license from a third party under the patents or other intellectual property of the third party, or a license from TI under the patents or other intellectual property of TI.

Reproduction of TI information in TI data books or data sheets is permissible only if reproduction is without alteration and is accompanied by all associated warranties, conditions, limitations, and notices. Reproduction of this information with alteration is an unfair and deceptive business practice. TI is not responsible or liable for such altered documentation. Information of third parties may be subject to additional restrictions.

Resale of TI products or services with statements different from or beyond the parameters stated by TI for that product or service voids all express and any implied warranties for the associated TI product or service and is an unfair and deceptive business practice. TI is not responsible or liable for any such statements.

TI products are not authorized for use in safety-critical applications (such as life support) where a failure of the TI product would reasonably be expected to cause severe personal injury or death, unless officers of the parties have executed an agreement specifically governing such use. Buyers represent that they have all necessary expertise in the safety and regulatory ramifications of their applications, and acknowledge and agree that they are solely responsible for all legal, regulatory and safety-related requirements concerning their products and any use of TI products in such safety-critical applications, notwithstanding any applications-related information or support that may be provided by TI. Further, Buyers must fully indemnify TI and its representatives against any damages arising out of the use of TI products in such safety-critical applications.

TI products are neither designed nor intended for use in military/aerospace applications or environments unless the TI products are specifically designated by TI as military-grade or "enhanced plastic." Only products designated by TI as military-grade meet military specifications. Buyers acknowledge and agree that any such use of TI products which TI has not designated as military-grade is solely at the Buyer's risk, and that they are solely responsible for compliance with all legal and regulatory requirements in connection with such use.

TI products are neither designed nor intended for use in automotive applications or environments unless the specific TI products are designated by TI as compliant with ISO/TS 16949 requirements. Buyers acknowledge and agree that, if they use any non-designated products in automotive applications, TI will not be responsible for any failure to meet such requirements.

Following are URLs where you can obtain information on other Texas Instruments products and application solutions:

Products

Audio	www.ti.com/audio
Amplifiers	amplifier.ti.com
Data Converters	dataconverter.ti.com
DLP® Products	www.dlp.com
DSP	dsp.ti.com
Clocks and Timers	www.ti.com/clocks
Interface	interface.ti.com
Logic	logic.ti.com
Power Mgmt	power.ti.com
Microcontrollers	microcontroller.ti.com
RFID	www.ti-rfid.com
RF/IF and ZigBee® Solutions	www.ti.com/lprf

Applications

Communications and Telecom	www.ti.com/communications
Computers and Peripherals	www.ti.com/computers
Consumer Electronics	www.ti.com/consumer-apps
Energy and Lighting	www.ti.com/energy
Industrial	www.ti.com/industrial
Medical	www.ti.com/medical
Security	www.ti.com/security
Space, Avionics and Defense	www.ti.com/space-avionics-defense
Transportation and Automotive	www.ti.com/automotive
Video and Imaging	www.ti.com/video
Wireless	www.ti.com/wireless-apps

TI E2E Community Home Page

e2e.ti.com

Mailing Address: Texas Instruments, Post Office Box 655303, Dallas, Texas 75265
Copyright © 2011, Texas Instruments Incorporated