

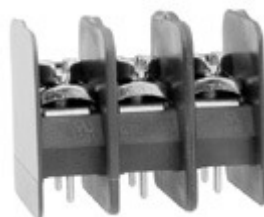


### Screw and Tab Connectors for Printed Circuit Boards

**TYPE 983-US /-UD /-UW**  
10 mm spacing - 2 to 7 poles



Distributor Stock Check



RoHS WEEE Pb free surface compliant

### Description

This 600 volt, 10 mm (0.393 in.) pitch PCB mounted barrier block has feed-through screw held wire connections above the PCB and special barriers that protrude through the PCB in slots prepared for that purpose. These blocks require slots to be cut through the printed circuit board to allow for the extended barriers designed into the base. PCB slots must measure 2.0 x 25.4 mm (0.079 x 1.000 in.).

- Barrier strip connector
- 1 or 2 PCB Pins per pole

### Technical Data

**Center to Center Spacing:** 10 mm (0.394 in.)

**Nominal Cross Section:**

2.5 mm<sup>2</sup> (3874 mils<sup>2</sup>)

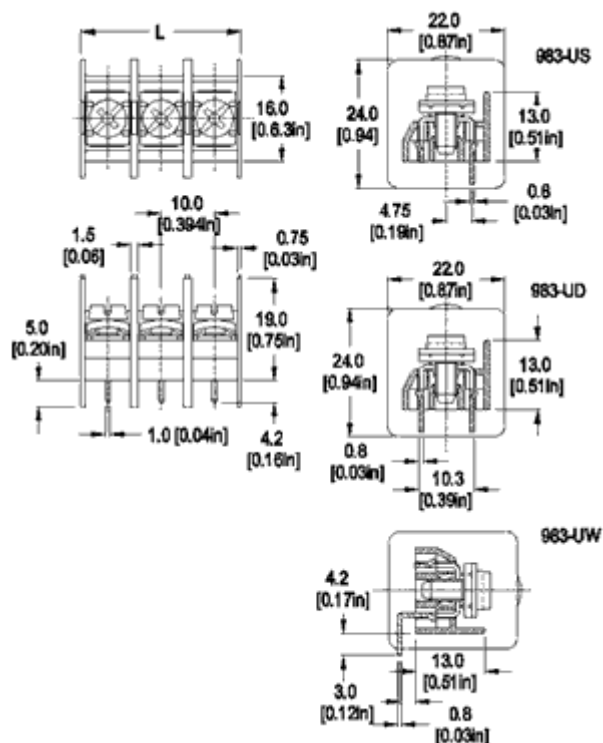
**Wire Stripping Length:** 8.5 mm (0.33 in.)

**Recommended Hole Diameter in PC Board:**

1.3 mm (0.051 in.)

### Application

This block does everything other barrier blocks of its size do and more. These are excellent for single-phase or three-phase applications up to 600 volts. Lighting, motive power, HVAC and all connections where a heavy-duty block is required.



**Dimensions:** mm (in.)

Length of Connector (L)

L = No. of Poles x Center to Center Spacing

**When locating connector, allow 0.5 mm clearance around it for process-induced variations.**

### Approval Information

UL File No.E69841

CSA File No.LR24322

Rating	Current(A)	Voltage(V)	Application group	AWG
UL	20	600	B,C	20-12
CSA	20	600	B,C,D,E	22-10

### Screw Tightening Torque:

UL: 10.0 lbf·in

CSA: 1.13 Nm

**Rated Impulse Withstand Voltage:** 8000 V

### Material

**Molding:** Polyamide 4.6, self extinguishing UL 94, V-0, color black  
**Temperature limits:**

**Short Time:** 260°C (500°F)  
**Continuous:** RTI 105°C (221°F)  
**Low Limit:** -40°C (-40°F)  
**Comparative Tracking Index:** CTI > 250  
**Oxygen Index Rating:** 37%

**Terminal Body:** Tin plated copper alloy  
**Screw and Washer:** M4, Nickel plated steel  
**PCB Pin:** 0.8 x 1.0 mm (0.03 x 0.04 in.), Tin plated copper alloy

---

**Item** **983-US /-UD /-UW**

- Options**
- ☐ G05: Gold Plating (5 micro inches)
  - ☐ G30: Gold Plating (30 micro inches)
  - ☐ S30: Silver Plating (30 micro inches)
  - ☐ 10MM: Solder Pin length of 10 mm (0.39 in.)
  - ☐ CS: Captive Screws

**Note:** Plated component: terminal body 10MM for Types 983-US /-UD only

**Accessories**

Parallel (1 pin per pole): S Parallel (2 pins per pole): D Perpendicular (1 pin per pole): W

WIRE ENTRY:

POLES:  
02 to 07

983-U

/