

# MOS FET Relays

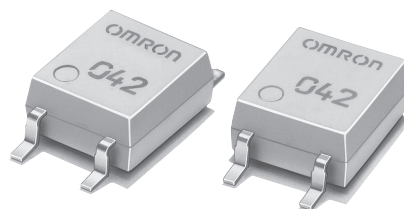
## G3VM-201G

### Slim, 2.1-mm High MOS FET Relay with 4-pin SOP Package

- Leakage current of 1 nA max. (0.07 nA typ.) when relay is open.
- Dielectric strength of 1,500 Vrms between I/O.
- RoHS Compliant.

### ■ Application Examples

- Broadband systems
- Measurement devices
- Data loggers
- Amusement machines



**Note:** The actual product is marked differently from the image shown here.

### ■ List of Models

Contact form	Terminals	Load voltage (peak value)	Model	Number per stick	Number per tape
SPST-NO	Surface-mounting terminals	200 VAC	G3VM-201G	100	---
			G3VM-201G(TR)	---	2,500

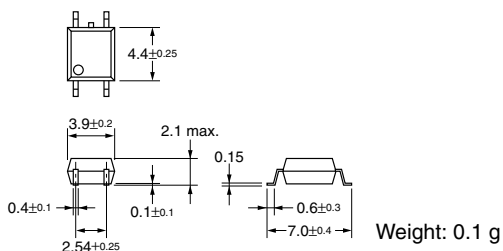
### ■ Dimensions

**Note:** All units are in millimeters unless otherwise indicated.

#### G3VM-201G

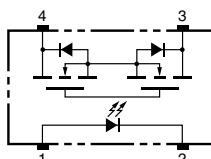


**Note:** The actual product is marked differently from the image shown here.



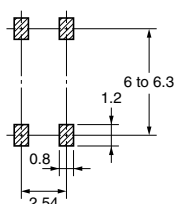
### ■ Terminal Arrangement/Internal Connections (Top View)

#### G3VM-201G



### ■ Actual Mounting Pad Dimensions (Recommended Value, Top View)

#### G3VM-201G



## ■ Absolute Maximum Ratings (Ta = 25°C)

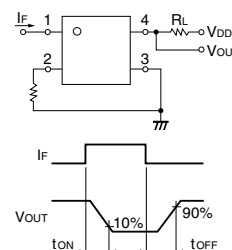
Item		Symbol	Rating	Unit	Measurement conditions
Input	LED forward current	I <sub>F</sub>	50	mA	
	Repetitive peak LED forward current	I <sub>FP</sub>	1	A	100 μs pulses, 100 pps
	LED forward current reduction rate	Δ I <sub>F</sub> /°C	−0.5	mA/°C	T <sub>a</sub> ≥ 25°C
	LED reverse voltage	V <sub>R</sub>	5	V	
	Connection temperature	T <sub>J</sub>	125	°C	
Output	Load voltage (AC peak/DC)	V <sub>OFF</sub>	200	V	
	Continuous load current	I <sub>O</sub>	50	mA	
	ON current reduction rate	Δ I <sub>ON</sub> /°C	−1.2	mA/°C	T <sub>a</sub> ≥ 25°C
	Connection temperature	T <sub>J</sub>	125	°C	
Dielectric strength between input and output (See note 1.)		V <sub>I-O</sub>	1,500	V <sub>rms</sub>	AC for 1 min
Operating temperature		T <sub>a</sub>	−40 to +85	°C	With no icing or condensation
Storage temperature		T <sub>stg</sub>	−55 to +100	°C	With no icing or condensation
Soldering temperature (10 s)		---	260	°C	10 s

**Note:** 1. The dielectric strength between the input and output was checked by applying voltage between all pins as a group on the LED side and all pins as a group on the light-receiving side.

## ■ Electrical Characteristics (Ta = 25°C)

Item	Symbol	Minimum	Typical	Maximum	Unit	Measurement conditions
Input	LED forward voltage	$V_F$	1.0	1.15	1.3	V
	Reverse current	$I_R$	---	---	10	$\mu\text{A}$
	Capacity between terminals	$C_T$	---	30	---	pF
	Trigger LED forward current	$I_{FT}$	---	1	3	mA
Output	Maximum resistance with output ON	$R_{ON}$	---	40	50	$\Omega$
	Current leakage when the relay is open	$I_{LEAK}$	---	0.07	1.0	nA
	Capacity between terminals	$C_{OFF}$	---	15	20	pF
Capacity between I/O terminals		$C_{I-O}$	---	0.8	---	pF
Insulation resistance		$R_{I-O}$	1,000	---	---	M $\Omega$
Turn-ON time		$t_{ON}$	---	0.03	0.5	ms
Turn-OFF time		$t_{OFF}$	---	0.07	0.2	ms

**Note:** 2. Turn-ON and Turn-OFF Times



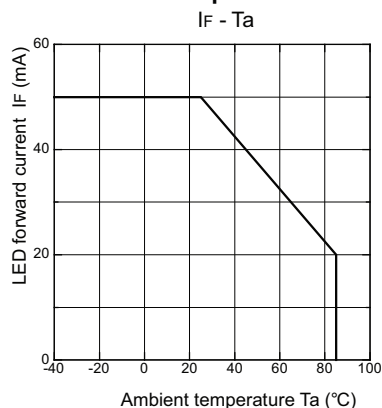
## ■ Recommended Operating Conditions

Use the G3VM under the following conditions so that the Relay will operate properly.

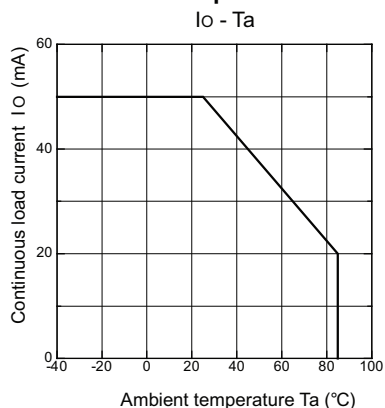
Item	Symbol	Minimum	Typical	Maximum	Unit
Load voltage (AC peak/DC)	$V_{DD}$	---	---	160	V
Operating LED forward current	$I_F$	5	7.5	15	mA
Continuous load current (AC peak/DC)	$I_O$	---	---	40	mA
Operating temperature	$T_a$	25	---	60	°C

# Engineering Data

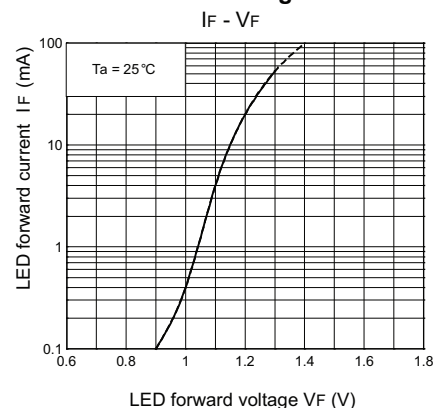
LED forward current vs.  
Ambient temperature



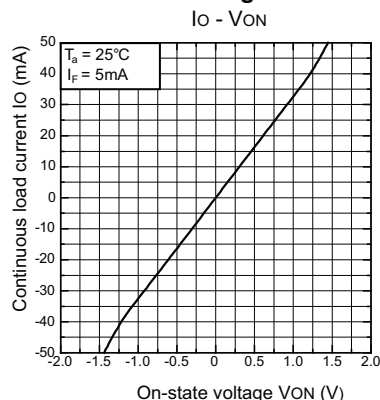
Continuous load current vs.  
Ambient temperature



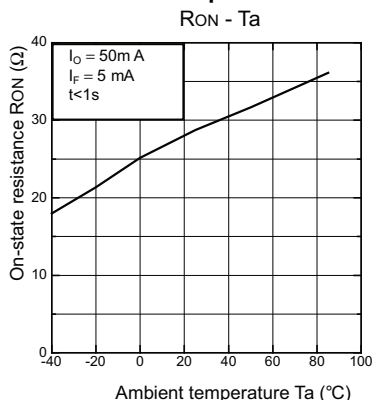
LED forward current vs.  
LED forward voltage



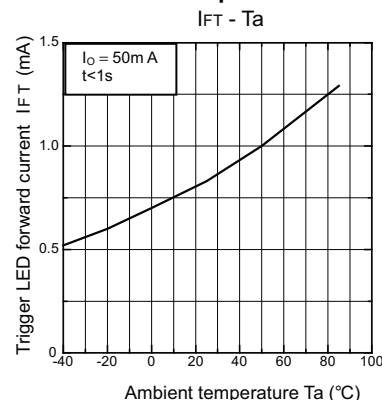
Continuous load current vs.  
On-state voltage



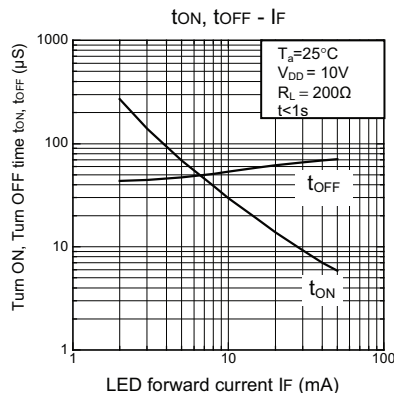
On-state resistance vs.  
Ambient temperature



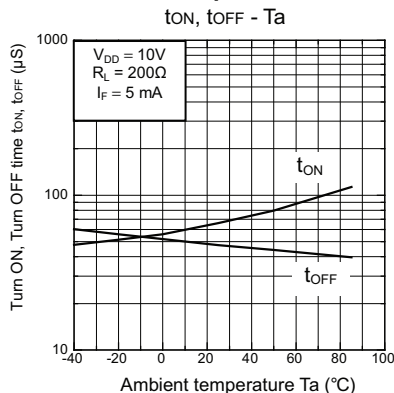
Trigger LED forward current vs.  
Ambient temperature



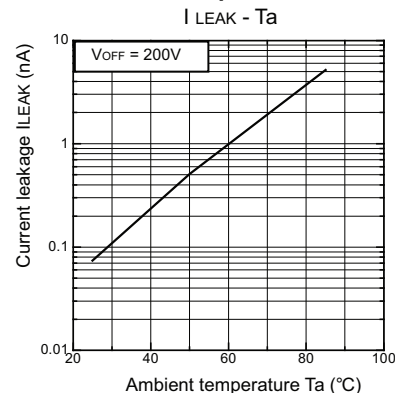
Turn ON, Turn OFF time vs.  
LED forward current



Turn ON, Turn OFF time vs.  
Ambient temperature



Current leakage vs.  
Ambient temperature



All sales are subject to Omron Electronic Components LLC standard terms and conditions of sale, which can be found at [http://www.components.omron.com/components/web/webfiles.nsf/sales\\_terms.html](http://www.components.omron.com/components/web/webfiles.nsf/sales_terms.html)

**ALL DIMENSIONS SHOWN ARE IN MILLIMETERS.**

To convert millimeters into inches, multiply by 0.03937. To convert grams into ounces, multiply by 0.03527.

---

**OMRON**<sup>®</sup>

**OMRON ELECTRONIC  
COMPONENTS LLC**

55 E. Commerce Drive, Suite B  
Schaumburg, IL 60173

**847-882-2288**

**OMRON ON-LINE**

Global - <http://www.omron.com>

USA - <http://www.components.omron.com>

Cat. No. X302-E-1

12/10

Specifications subject to change without notice

Printed in USA