

KSU Series

Micro Mini Surface Mount Detect Switches



Features/Benefits

- New multi contact construction
- Metal actuator
- Low actuating force
- RoHS compliant and compatible

Typical Applications

- Mobile phones and other handheld devices
- Portable medical devices
- Audio devices
- Alarm devices
- Payment terminals
- Smart meters

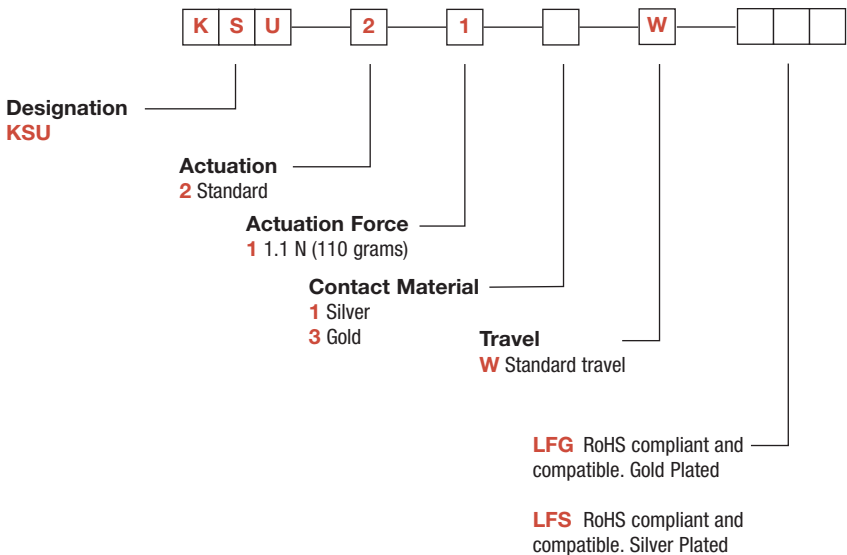
Specifications	Electrical	GOLD	SILVER
FUNCTION: Momentary action.	MAXIMUM POWER:	0.2 VA	0.1 VA
CONTACT TYPE: SPST Normally open.	MAXIMUM VOLTAGE:	32 VDC	32 VDC
TERMINALS: Gullwing type for SMT.	MINIMUM VOLTAGE:	20 mV	20 mV
Mechanical	MAXIMUM CURRENT:	10 mA	50 mA
SWITCHING FORCE: 0,7 ± 0,5 N	MINIMUM CURRENT:	0.01 mA	1 mA
TRAVEL TO MAKE: 0,65 mm - 0,45/+0,25 mm	CONTACT RESISTANCE:	≤100 mΩ	
MECHANICAL TRAVEL: 1,5 ± 0,2 mm	INSULATION RESISTANCE:	(100 VDC) 10 ⁹ Ω	
OPERATING LIFE: 100,000 cycles	DIELECTRIC STRENGTH:	≥ 250 Vrms	
Packaging	BOUNCE TIME:	≤ 3 ms	
Switches are delivered on continuous tape, in reels of 1,000 pieces	Environmental		
	OPERATING TEMPERATURE:	−40°C to +125°C	−40°C to +85°C
	STORAGE TEMPERATURE:	−55°C to + 125°C	−40°C to +85°C
	Process		
	SOLDERING:	Compatible with lead free reflow process	
NOTE: Specifications listed above are for switches with standard options. For information on specific and custom switches, consult Customer Service Center.			

Build-A-Switch

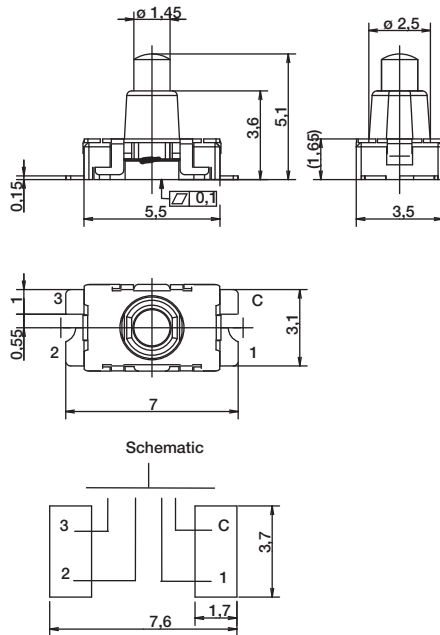
To order, simply select desired option from each category and place in the appropriate box. Available options are shown and described on page E-17. For additional options not shown in catalog, consult our Customer Service Center.

E

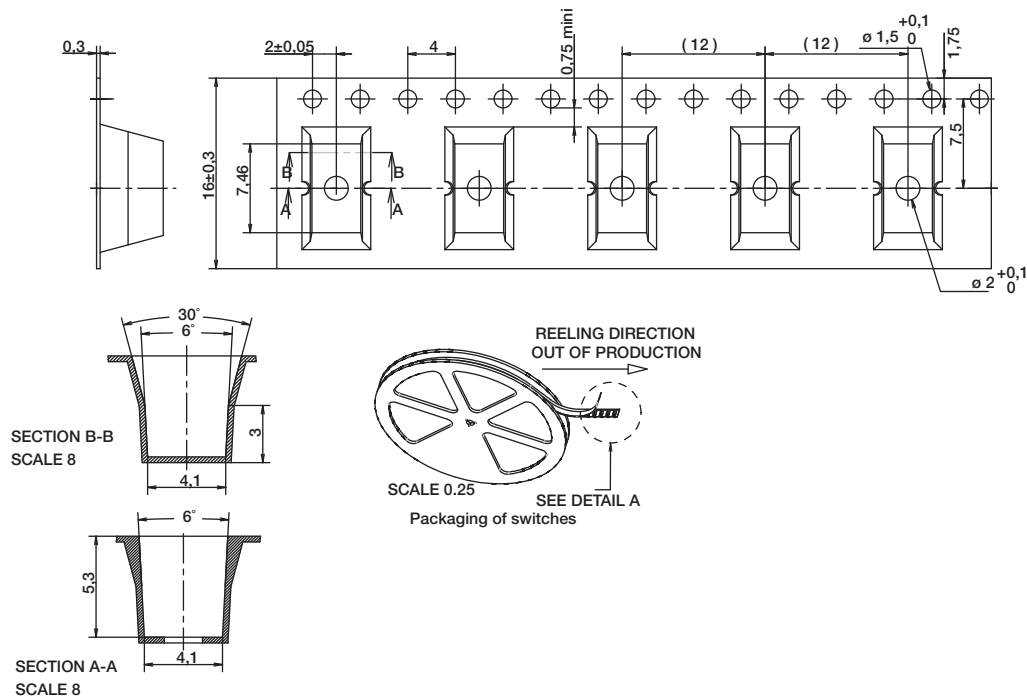
Detect



KSU Series Micro Mini Surface Mount Detect Switches

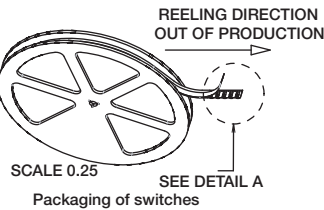


TAPE & REEL



SECTION B-B
SCALE 8

SECTION A-A
SCALE 8



Detect