

## TH-100 Shaft of Hinge

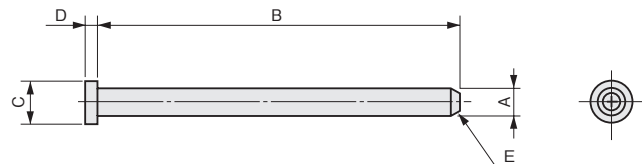


### Characteristic

Made of stainless steel, having excellent corrosion-resistance.

### Application

Replacement of steel made hinge shafts as an anticorrosive countermeasure /  
Rotational axes for any part in mechanisms /  
General applications, etc.



### Specification

Model No.	A	B	C	D	E	Net Weight (g)	Code No.
TH-100-1	φ5	65	φ8	2		10.4	2247
TH-100-2	φ6	85	φ11		C1	20.8	2248
TH-100-3	φ8	110	φ14	3		46.0	2249
TH-100-4	φ10		φ16		C1.5	71.7	2250

Material SUS304

## TH-121 TH-121E Shaft of Hinge Retainer Type/Retainer E Type



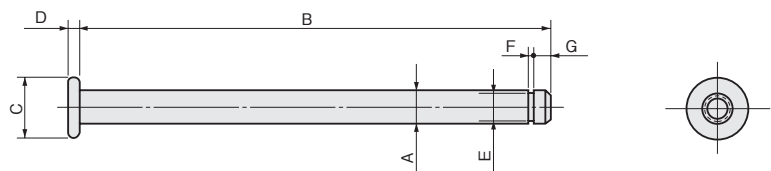
### Characteristic

Can be used for a wide variety of application.  
Also available for stainless steel no slotted hinge shafts, TH-100 line up series.

### Application

Distribution boards /  
Distribution panels /  
Various types of hinge pins, etc.

### TH-121



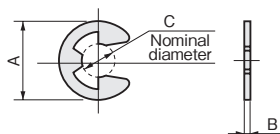
### Specification for TH-121E Retainer E Type

Model No.	A	B	C	Code No.
TH-121E-3	φ 7	t 0.6	3	2835
TH-121E-4	φ 9		4	2836
TH-121E-5	φ 11		5	2837
TH-121E-6	φ 12	t 0.8	6	2838
TH-121E-7	φ 14		7	2839
TH-121E-9	φ 18		9	2840

Material SUS304

Finish —

### TH-121 E



### Specification for TH-121E Slotted Hinge Pin

Model No.	A	B	C	D	E	F	G	Net Weight (g)	Code No.
TH-121-4-30	φ 4	30	φ 7	2	φ 3	3.3	3.8	2805	2805
TH-121-4-35		35							
TH-121-5-44	φ 5	44	φ 8	2	φ 4	0.7	2.3	7.8	2808
TH-121-5-56		56							
TH-121-6-70	φ 6	70	φ 11	3	φ 5	3.3	18	2816	2816
TH-121-6-85		85							
TH-121-7-85	φ 7	85	φ 12.5	3	φ 6	0.9	3.1	38	2823
TH-121-8-110									
TH-121-8-110	φ 8	110	φ 14		φ 7			46	2829

Material SWCH12R

Finish Zn