

PRODUCT NUMBER

5 3 6 1 2 - X X X - X X X X LF

PLATING

S=15μ" [0.38μm] GOLD
ON CONTACT AREA (NOTE 13)
150μ" [3.81μm] TIN/LEAD ON TAIL
G=30μ" [0.76μm] GOLD (NOTE 13)
ON CONTACT AREA
150μ" [3.81μm] TIN/LEAD ON TAIL

LEAD FREE PLATING

S=15μ" [0.38μm] GOLD (NOTE 13)
ON CONTACT AREA
100μ" [2.54μm] TIN ON TAIL
G=30μ" [0.76μm] GOLD (NOTE 13)
ON CONTACT AREA
100μ" [2.54μm] PURE TIN ON TAIL

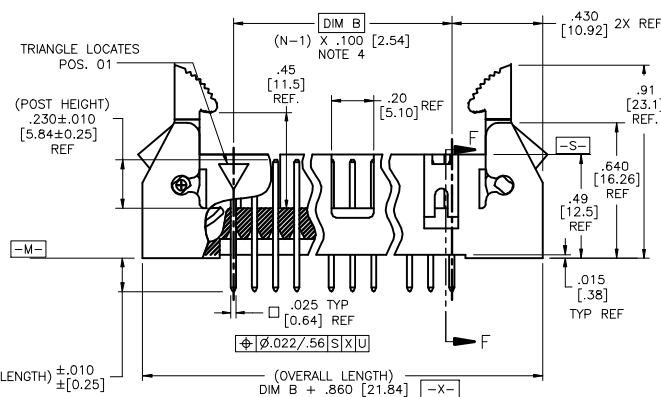
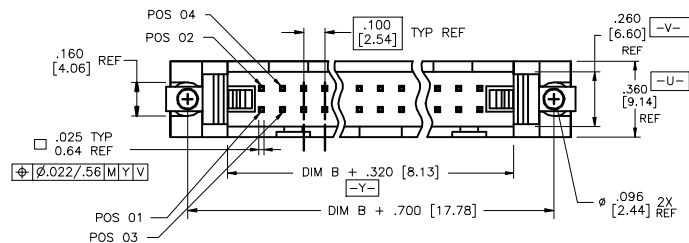
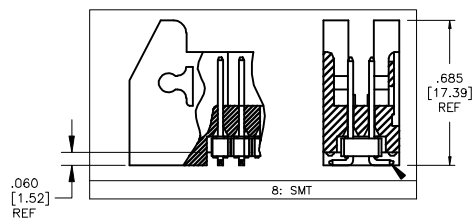
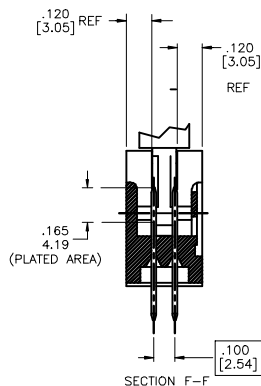
LEAD FREE OPTION
NOTE 10,11

RETENTION
R= RETENTION LEG
NOTE 5

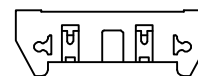
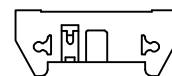
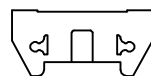
POLARIZATION
NOTE 9

TAIL LENGTH
1=.085/2.16
2=.112/2.84
4=.120/3.05
6=.150/3.81
7=.675/17.15
8= SMT

DASH NO.	POSITIONS	HEADER STYLE
10	2 X 5	A
14	2 X 7	C
16	2 X 8	D
20	2 X 10	D
26	2 X 13	D
34	2 X 17	D
40	2 X 20	D
50	2 X 25	D



HEADER STYLE (LATCHES NOT SHOWN)

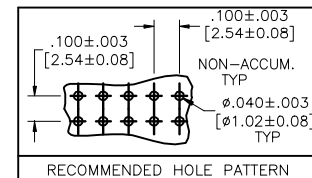
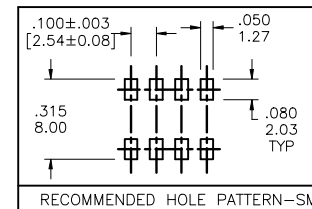


mat'l. code	surface ISO 1302	tolerance ISO 406 ISO 1101	projection INCH/MM	product family QUICKIE
ltr	ecn no	dr	date	title
D	VO1862	MEM	7/26/00	.100/2.54cc EJECT LATCH
E	VO2309	MEM	9/11/00	SHOROUDED VERTICAL HEADER
F	C10004	MDF	2/26/01	dwg no
G	M05-0089	ERE	5/20/05	sheet 1 of 2 size
H	M06-0289	AGS	7/28/06	53612 A3
J	M08-0237	MHT	8/25/08	type
K	M08-0273	MHT	9/26/08	Product Customer Drawing
sheet	revision	K	K	
index	sheet	1	2	

NOTES:

- ① HOUSING MAT'L: HIGH TEMPURTURE THERMOPLASTIC. UL94V-0.
COLOR : BLACK
- ② PIN MATERIAL: PHOSPHOR-BRONZE
- ③ 3 LBS/1.36 KG MIN. RETENTION.
- ④ TO DETERMINE DIMENSION:
N = NUMBER OF POSITIONS.
EXAMPLE: 10 POS., (N-1) x .100[2.54]=.900[22.87]
- ⑤ RETENTIVE LEG:
RETENTIVE LEG APPLICABLE TO TAIL LENGTH .120/3.05 ONLY.
RETENTION IS APPLIED TO FOUR PINS ON PART SIZES OF 2x14 AND SMALLER,
AND APPLIED TO EIGHT PINS ON PARTS SIZES OF 2x15 AND LARGER.
5LB/2.3KG MAX INSERTION FORCE AND .25LB./1KG MIN RETENTION FORCE
PER RETENTIVE PIN USING .062/1.57 THICK CIRCUIT BOARD AND RECOMMENDED
HOLE PATTERN. RETENTIVE LOCATION AT THE DISCRETION OF THE MANUFACTURER.
OMIT FROM PRODUCT NUMBER IF THIS FEATURE IS NOT APPLICABLE.
6. PACKAGED IN TRAYS.
8. UNDERPLATING: 50μ"/1.27μm Ni.
- ⑨ FOR POLARIZATION, SPECIFY POSITION NUMBER (i.e.. 03= PIN 3) TO OMIT PIN.
OMIT FROM PRODUCT NUMBER IF THIS FEATURE IS NOT APPLICABLE.
- ⑩ ADD "LF" SUFFIX AT THE END OF PART NUMBER FOR LEAD FREE OPTION.
- ⑪ THIS PRODUCT MEETS EUROPEAN UNION DIRECTIVES AND OTHER
COUNTRY REGULATION AS DESCRIBED IN GS-22-008.
12. THE HOUSING WILL WITHSTAND EXPOSURE TO 260°C PEAK TEMPERATURE
FOR 15 SECONDS IN A WAVE SOLDER APPLICATION WITH A 1.5mm
MINIMUM THICK CIRCUIT BOARD. SEE APPLICATION NOTES/PROCEDURES
IF THEY ARE AVAILABLE.

THE HOUSING WILL WITHSTAND EXPOSURE TO 260°C PEAK TEMPERATURE
FOR 20 SECONDS IN A CONVECTION, INFRA-RED OR VAPOR PHASE REFLOW
OVEN. SEE APPLICATION NOTES/PROCEDURES IF THEY ARE AVAILABLE.
- ⑬ PLATING OPTIONS:
MAY BE EITHER GOLD OR GXT PLATED AT MANUFACTURER'S OPTION.



mat'l. code				surface ISO 1902		tolerance ISO 406 ISO 1101		projection ISO 1001		product family QUICKIE	
ltr	ecn no	dr	date	tolerances unless otherwise specified							
K				angles	linear	.XX±.01/XX±.03 XXX±.005/XX±.013 XXX±.0020/XXX±.0051		INCH/MM		title .100/2.54cc EJECT LATCH SHOROUDED VERTICAL HEADER	
				0'±2'				scale 1:1		dwg no 53612	
				dr	D. INGRAM	7/12/99		FCJ		sheet 2 of 2 size A3	
				engr	L. GREEN	7/21/99					
				chr	L. GREEN	7/21/99					
				appd	L. GREEN	7/21/99				type Product Customer Drawing	
sheet index	revision sheet										

Mouser Electronics

Authorized Distributor

Click to View Pricing, Inventory, Delivery & Lifecycle Information:

FCI:

[53612-G16-4LF](#) [53612-G40-6LF](#) [53612-S50-7LF](#) [53612-S20-4](#)