

# Standard 78M series, 3-pin regulator

## BA178M○○T / FP series

The BA178M○○T and BA178M○○FP series are 3-pin, fixed positive output voltage regulators. These regulators are used to provide a stabilized output voltage from a fluctuating DC input voltage.

There are 11 fixed output voltages, as follows : 5V, 6V, 7V, 8V, 9V, 10V, 12V, 15V, 18V, 20V, and 24V.

The maximum current capacity is 0.5A for each of the above voltages.

### ●Applications

Constant voltage power supply

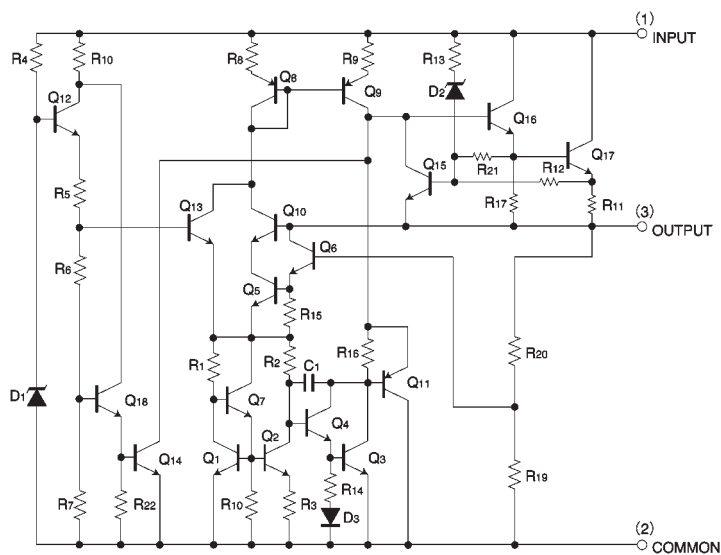
### ●Features

- 1) Built-in overcurrent protection circuit and thermal shutdown circuit.
- 2) Excellent ripple rejection.
- 3) Available in TO-220FP and TO252-3 packages, to meet wide range of applications.
- 4) Compatible with other manufacturers' regulators.
- 5) Richly diverse lineup. (5V, 6V, 7V, 8V, 9V, 10V, 12V, 15V, 18V, 20V, 24V)

### ●Product codes

Output voltage (V)	Product No.	Output voltage (V)	Product No.
5	BA178M05T / FP	12	BA178M12T / FP
6	BA178M06T / FP	15	BA178M15T / FP
7	BA178M07T / FP	18	BA178M18T / FP
8	BA178M08T / FP	20	BA178M20T / FP
9	BA178M09T / FP	24	BA178M24T / FP
10	BA178M10T / FP	—	—

●Internal circuit configuration



《Common specifications for BA178M○OT / FP series》

●Absolute maximum ratings (Ta = 25°C)

Parameter		Symbol	Limits	Unit
Applied voltage		VIN	35	V
Power dissipation	TO220FP	Pd	2.0*	W
	TO252 - 3		1.0*	
Operating temperature		Topr	−40~+85	°C
Storage temperature		Tstg	−55~+150	°C

\* Reduced by 16 mW (TO220FP) and 8 mW (TO252-3) for each increase in Ta of 1°C over 25°C (without heat sink) .

●Recommended operating conditions (Ta = 25°C)

BA178M05T / FP

Parameter	Symbol	Min.	Typ.	Max.	Unit
Input voltage	VIN	7.5	—	20	V
Output current	Io	—	—	0.5	A

BA178M07T / FP

Parameter	Symbol	Min.	Typ.	Max.	Unit
Input voltage	VIN	9.5	—	22	V
Output current	Io	—	—	0.5	A

BA178M06T / FP

Parameter	Symbol	Min.	Typ.	Max.	Unit
Input voltage	VIN	8.5	—	21	V
Output current	Io	—	—	0.5	A

BA178M08T / FP

Parameter	Symbol	Min.	Typ.	Max.	Unit
Input voltage	VIN	10.5	—	23	V
Output current	Io	—	—	0.5	A

BA178M09T / FP

Parameter	Symbol	Min.	Typ.	Max.	Unit
Input voltage	$V_{IN}$	11.5	—	24	V
Output current	$I_o$	—	—	0.5	A

BA178M12T / FP

Parameter	Symbol	Min.	Typ.	Max.	Unit
Input voltage	$V_{IN}$	15	—	27	V
Output current	$I_o$	—	—	0.5	A

BA178M18T / FP

Parameter	Symbol	Min.	Typ.	Max.	Unit
Input voltage	$V_{IN}$	21	—	33	V
Output current	$I_o$	—	—	0.5	A

BA178M24T / FP

Parameter	Symbol	Min.	Typ.	Max.	Unit
Input voltage	$V_{IN}$	27	—	33	V
Output current	$I_o$	—	—	0.5	A

BA178M10T / FP

Parameter	Symbol	Min.	Typ.	Max.	Unit
Input voltage	$V_{IN}$	12.5	—	25	V
Output current	$I_o$	—	—	0.5	A

BA178M15T / FP

Parameter	Symbol	Min.	Typ.	Max.	Unit
Input voltage	$V_{IN}$	17.5	—	30	V
Output current	$I_o$	—	—	0.5	A

BA178M20T / FP

Parameter	Symbol	Min.	Typ.	Max.	Unit
Input voltage	$V_{IN}$	23	—	33	V
Output current	$I_o$	—	—	0.5	A

### ●Electrical characteristics

(BA178M05T / FP individual specifications) (unless otherwise noted,  $T_a = 25^\circ\text{C}$ ,  $V_{IN} = 10\text{V}$ ,  $I_o = 350\text{mA}$ )

Parameter	Symbol	Min.	Typ.	Max.	Unit	Conditions	Measurement circuit
Output voltage 1	$V_{O1}$	4.8	5.0	5.2	V	$I_o=350\text{mA}$	Fig.1
Output voltage 2	$V_{O2}$	4.75	—	5.25	V	$V_{IN}=7.5\sim 20\text{V}$ , $I_o=5\sim 350\text{mA}$	Fig.1
Input stability 1	$\text{Reg.}I_1$	—	3	100	mV	$V_{IN}=7\sim 25\text{V}$ , $I_o=200\text{mA}$	Fig.1
Input stability 2	$\text{Reg.}I_2$	—	1	50	mV	$V_{IN}=8\sim 12\text{V}$ , $I_o=200\text{mA}$	Fig.1
Ripple rejection ratio	R.R.	62	78	—	dB	$e_{IN}=1V_{rms}$ , $f=120\text{Hz}$ , $I_o=100\text{mA}$	Fig.2
Load regulation 1	$\text{Reg.}L_1$	—	20	100	mV	$I_o=5\sim 500\text{mA}$	Fig.1
Load regulation 2	$\text{Reg.}L_2$	—	10	50	mV	$I_o=5\sim 200\text{mA}$	Fig.1
Temperature coefficient of output voltage	$T_{CVO}$	—	-1.0	—	mV/°C	$I_o=5\text{mA}$ , $T_j=0\sim 125^\circ\text{C}$	Fig.1
Output noise voltage	$V_n$	—	40	—	$\mu\text{V}$	$f=10\text{Hz}\sim 100\text{kHz}$	Fig.3
Minimum I/O voltage differential	$V_d$	—	2.0	—	V	$I_o=500\text{mA}$	Fig.4
Bias current	$I_b$	—	4.5	6.0	mA	$I_o=0\text{mA}$	Fig.5
Bias current change 1	$I_{b1}$	—	—	0.5	mA	$I_o=5\sim 350\text{mA}$	Fig.5
Bias current change 2	$I_{b2}$	—	—	0.8	mA	$V_{IN}=8\sim 25\text{V}$ , $I_o=200\text{mA}$	Fig.5
Peak output current	$I_{OP}$	—	875	—	mA	$T_j=25^\circ\text{C}$	Fig.1
Output short-circuit current	$I_{OS}$	—	0.4	—	A	$V_{IN}=25\text{V}$	Fig.6

〈BA178M06T / FP individual specifications〉 (unless otherwise noted,  $T_a = 25^\circ\text{C}$ ,  $V_{IN} = 11\text{V}$ ,  $I_o = 350\text{mA}$ )

Parameter	Symbol	Min.	Typ.	Max.	Unit	Conditions	Measurement circuit
Output voltage 1	$V_{O1}$	5.75	6.0	6.25	V	$I_o = 350\text{mA}$	Fig.1
Output voltage 2	$V_{O2}$	5.7	—	6.3	V	$V_{IN} = 8.5 \sim 21\text{V}$ , $I_o = 5 \sim 350\text{mA}$	Fig.1
Input stability 1	Reg. I <sub>1</sub>	—	3	100	mV	$V_{IN} = 8 \sim 25\text{V}$ , $I_o = 200\text{mA}$	Fig.1
Input stability 2	Reg. I <sub>2</sub>	—	1	50	mV	$V_{IN} = 9 \sim 25\text{V}$ , $I_o = 200\text{mA}$	Fig.1
Ripple rejection ratio	R.R.	60	74	—	dB	$e_{IN} = 1\text{V}_{rms}$ , $f = 120\text{Hz}$ , $I_o = 100\text{mA}$	Fig.2
Load regulation 1	Reg. L <sub>1</sub>	—	20	120	mV	$I_o = 5 \sim 500\text{mA}$	Fig.1
Load regulation 2	Reg. L <sub>2</sub>	—	10	60	mV	$I_o = 5 \sim 200\text{mA}$	Fig.1
Temperature coefficient of output voltage	$T_{CVO}$	—	−0.5	—	mV/°C	$I_o = 5\text{mA}$ , $T_j = 0 \sim 125^\circ\text{C}$	Fig.1
Output noise voltage	$V_n$	—	60	—	μV	$f = 10\text{Hz} \sim 100\text{kHz}$	Fig.3
Minimum I/O voltage differential	$V_d$	—	2.0	—	V	$I_o = 500\text{mA}$	Fig.4
Bias current	$I_b$	—	4.5	6.0	mA	$I_o = 0\text{mA}$	Fig.5
Bias current change 1	$I_{b1}$	—	—	0.5	mA	$I_o = 5 \sim 350\text{mA}$	Fig.5
Bias current change 2	$I_{b2}$	—	—	0.8	mA	$V_{IN} = 9 \sim 25\text{V}$ , $I_o = 200\text{mA}$	Fig.5
Peak output current	$I_{O-P}$	—	875	—	mA	$T_j = 25^\circ\text{C}$	Fig.1
Output short-circuit current	$I_{OS}$	—	0.4	—	A	$V_{IN} = 25\text{V}$	Fig.6

〈BA178M07T / FP individual specifications〉 (unless otherwise noted,  $T_a = 25^\circ\text{C}$ ,  $V_{IN} = 13\text{V}$ ,  $I_o = 350\text{mA}$ )

Parameter	Symbol	Min.	Typ.	Max.	Unit	Conditions	Measurement circuit
Output voltage 1	$V_{O1}$	6.7	7.0	7.3	V	$I_o = 350\text{mA}$	Fig.1
Output voltage 2	$V_{O2}$	6.65	—	7.35	V	$V_{IN} = 9.5 \sim 22\text{V}$ , $I_o = 5 \sim 350\text{mA}$	Fig.1
Input stability 1	Reg. I <sub>1</sub>	—	4	100	mV	$V_{IN} = 9 \sim 25\text{V}$ , $I_o = 200\text{mA}$	Fig.1
Input stability 2	Reg. I <sub>2</sub>	—	1	50	mV	$V_{IN} = 10 \sim 25\text{V}$ , $I_o = 200\text{mA}$	Fig.1
Ripple rejection ratio	R.R.	57	71	—	dB	$e_{IN} = 1\text{V}_{rms}$ , $f = 120\text{Hz}$ , $I_o = 100\text{mA}$	Fig.2
Load regulation 1	Reg. L <sub>1</sub>	—	20	140	mV	$I_o = 5 \sim 500\text{mA}$	Fig.1
Load regulation 2	Reg. L <sub>2</sub>	—	10	70	mV	$I_o = 5 \sim 200\text{mA}$	Fig.1
Temperature coefficient of output voltage	$T_{CVO}$	—	−0.5	—	mV/°C	$I_o = 5\text{mA}$ , $T_j = 0 \sim 125^\circ\text{C}$	Fig.1
Output noise voltage	$V_n$	—	70	—	μV	$f = 10\text{Hz} \sim 100\text{kHz}$	Fig.3
Minimum I/O voltage differential	$V_d$	—	2.0	—	V	$I_o = 500\text{mA}$	Fig.4
Bias current	$I_b$	—	4.5	6.0	mA	$I_o = 0\text{mA}$	Fig.5
Bias current change 1	$I_{b1}$	—	—	0.5	mA	$I_o = 5 \sim 350\text{mA}$	Fig.5
Bias current change 2	$I_{b2}$	—	—	0.8	mA	$V_{IN} = 10 \sim 25\text{V}$ , $I_o = 200\text{mA}$	Fig.5
Peak output current	$I_{O-P}$	—	875	—	mA	$T_j = 25^\circ\text{C}$	Fig.1
Output short-circuit current	$I_{OS}$	—	0.4	—	A	$V_{IN} = 25\text{V}$	Fig.6

〈BA178M08T / FP individual specifications〉 (unless otherwise noted,  $T_a = 25^\circ\text{C}$ ,  $V_{IN} = 14\text{V}$ ,  $I_o = 350\text{mA}$ )

Parameter	Symbol	Min.	Typ.	Max.	Unit	Conditions	Measurement circuit
Output voltage 1	$V_{O1}$	7.7	8.0	8.3	V	$I_o=350\text{mA}$	Fig.1
Output voltage 2	$V_{O2}$	7.6	—	8.4	V	$V_{IN}=10.5\sim23\text{V}$ , $I_o=5\sim350\text{mA}$	Fig.1
Input stability 1	Reg. $I_1$	—	4	100	mV	$V_{IN}=10.5\sim25\text{V}$ , $I_o=200\text{mA}$	Fig.1
Input stability 2	Reg. $I_2$	—	1	50	mV	$V_{IN}=11\sim12\text{V}$ , $I_o=200\text{mA}$	Fig.1
Ripple rejection ratio	R.R.	56	69	—	dB	$e_{IN}=1V_{rms}$ , $f=120\text{Hz}$ , $I_o=100\text{mA}$	Fig.2
Load regulation 1	Reg. $L_1$	—	20	160	mV	$I_o=5\sim500\text{mA}$	Fig.1
Load regulation 2	Reg. $L_2$	—	10	80	mV	$I_o=5\sim200\text{mA}$	Fig.1
Temperature coefficient of output voltage	$T_{CVO}$	—	-0.5	—	mV/ $^\circ\text{C}$	$I_o=5\text{mA}$ , $T_j=0\sim125^\circ\text{C}$	Fig.1
Output noise voltage	$V_n$	—	80	—	$\mu\text{V}$	$f=10\text{Hz}\sim100\text{kHz}$	Fig.3
Minimum I/O voltage differential	$V_d$	—	2.0	—	V	$I_o=500\text{mA}$	Fig.4
Bias current	$I_b$	—	4.5	6.0	mA	$I_o=0\text{mA}$	Fig.5
Bias current change 1	$I_{b1}$	—	—	0.5	mA	$I_o=5\sim350\text{mA}$	Fig.5
Bias current change 2	$I_{b2}$	—	—	0.8	mA	$V_{IN}=10.5\sim25\text{V}$ , $I_o=200\text{mA}$	Fig.5
Peak output current	$I_{O-P}$	—	875	—	mA	$T_j=25^\circ\text{C}$	Fig.1
Output short-circuit current	$I_{OS}$	—	0.4	—	A	$V_{IN}=25\text{V}$	Fig.6

〈BA178M09T / FP individual specifications〉 (unless otherwise noted,  $T_a = 25^\circ\text{C}$ ,  $V_{IN} = 15\text{V}$ ,  $I_o = 350\text{mA}$ )

Parameter	Symbol	Min.	Typ.	Max.	Unit	Conditions	Measurement circuit
Output voltage 1	$V_{O1}$	8.6	9.0	9.4	V	$I_o=350\text{mA}$	Fig.1
Output voltage 2	$V_{O2}$	8.55	—	9.45	V	$V_{IN}=11.5\sim24\text{V}$ , $I_o=5\sim350\text{mA}$	Fig.1
Input stability 1	Reg. $I_1$	—	4	100	mV	$V_{IN}=11.5\sim26\text{V}$ , $I_o=200\text{mA}$	Fig.1
Input stability 2	Reg. $I_2$	—	2	50	mV	$V_{IN}=12\sim25\text{V}$ , $I_o=200\text{mA}$	Fig.1
Ripple rejection ratio	R.R.	56	67	—	dB	$e_{IN}=1V_{rms}$ , $f=120\text{Hz}$ , $I_o=100\text{mA}$	Fig.2
Load regulation 1	Reg. $L_1$	—	20	180	mV	$I_o=5\sim500\text{mA}$	Fig.1
Load regulation 2	Reg. $L_2$	—	10	90	mV	$I_o=5\sim200\text{mA}$	Fig.1
Temperature coefficient of output voltage	$T_{CVO}$	—	-0.5	—	mV/ $^\circ\text{C}$	$I_o=5\text{mA}$ , $T_j=0\sim125^\circ\text{C}$	Fig.1
Output noise voltage	$V_n$	—	90	—	$\mu\text{V}$	$f=10\text{Hz}\sim100\text{kHz}$	Fig.3
Minimum I/O voltage differential	$V_d$	—	2.0	—	V	$I_o=500\text{mA}$	Fig.4
Bias current	$I_b$	—	4.5	6.0	mA	$I_o=0\text{mA}$	Fig.5
Bias current change 1	$I_{b1}$	—	—	0.5	mA	$I_o=5\sim350\text{mA}$	Fig.5
Bias current change 2	$I_{b2}$	—	—	0.8	mA	$V_{IN}=12\sim25\text{V}$ , $I_o=200\text{mA}$	Fig.5
Peak output current	$I_{O-P}$	—	875	—	mA	$T_j=25^\circ\text{C}$	Fig.1
Output short-circuit current	$I_{OS}$	—	0.17	—	A	$V_{IN}=30\text{V}$	Fig.6

〈BA178M10T / FP individual specifications〉 (unless otherwise noted,  $T_a = 25^\circ\text{C}$ ,  $V_{IN} = 16\text{V}$ ,  $I_o = 350\text{mA}$ )

Parameter	Symbol	Min.	Typ.	Max.	Unit	Conditions	Measurement circuit
Output voltage 1	$V_{O1}$	9.6	10.0	10.4	V	$I_o = 350\text{mA}$	Fig.1
Output voltage 2	$V_{O2}$	9.5	—	10.5	V	$V_{IN} = 12.5 \sim 25\text{V}$ , $I_o = 5 \sim 350\text{mA}$	Fig.1
Input stability 1	Reg. $I_1$	—	5	100	mV	$V_{IN} = 12.5 \sim 28\text{V}$ , $I_o = 200\text{mA}$	Fig.1
Input stability 2	Reg. $I_2$	—	2	50	mV	$V_{IN} = 14 \sim 26\text{V}$ , $I_o = 200\text{mA}$	Fig.1
Ripple rejection ratio	R.R.	56	66	—	dB	$e_{IN} = 1\text{V}_{\text{rms}}$ , $f = 120\text{Hz}$ , $I_o = 100\text{mA}$	Fig.2
Load regulation 1	Reg. $L_1$	—	20	200	mV	$I_o = 5 \sim 500\text{mA}$	Fig.1
Load regulation 2	Reg. $L_2$	—	10	100	mV	$I_o = 5 \sim 200\text{mA}$	Fig.1
Temperature coefficient of output voltage	$T_{CVO}$	—	—0.5	—	mV/ $^\circ\text{C}$	$I_o = 5\text{mA}$ , $T_j = 0 \sim 125^\circ\text{C}$	Fig.1
Output noise voltage	$V_n$	—	100	—	$\mu\text{V}$	$f = 10\text{Hz} \sim 100\text{kHz}$	Fig.3
Minimum I/O voltage differential	$V_d$	—	2.0	—	V	$I_o = 500\text{mA}$	Fig.4
Bias current	$I_b$	—	4.5	6.0	mA	$I_o = 0\text{mA}$	Fig.5
Bias current change 1	$I_{b1}$	—	—	0.5	mA	$I_o = 5 \sim 350\text{mA}$	Fig.5
Bias current change 2	$I_{b2}$	—	—	0.8	mA	$V_{IN} = 13 \sim 25\text{V}$ , $I_o = 200\text{mA}$	Fig.5
Peak output current	$I_{O-P}$	—	875	—	mA	$T_j = 25^\circ\text{C}$	Fig.1
Output short-circuit current	$I_{OS}$	—	0.17	—	A	$V_{IN} = 30\text{V}$	Fig.6

〈BA178M12T / FP individual specifications〉 (unless otherwise noted,  $T_a = 25^\circ\text{C}$ ,  $V_{IN} = 19\text{V}$ ,  $I_o = 350\text{mA}$ )

Parameter	Symbol	Min.	Typ.	Max.	Unit	Conditions	Measurement circuit
Output voltage 1	$V_{O1}$	11.5	12.0	12.5	V	$I_o = 350\text{mA}$	Fig.1
Output voltage 2	$V_{O2}$	11.4	—	12.6	V	$V_{IN} = 15 \sim 27\text{V}$ , $I_o = 5 \sim 350\text{mA}$	Fig.1
Input stability 1	Reg. $I_1$	—	5	100	mV	$V_{IN} = 14.5 \sim 30\text{V}$ , $I_o = 200\text{mA}$	Fig.1
Input stability 2	Reg. $I_2$	—	3	50	mV	$V_{IN} = 16 \sim 30\text{V}$ , $I_o = 200\text{mA}$	Fig.1
Ripple rejection ratio	R.R.	55	63	—	dB	$e_{IN} = 1\text{V}_{\text{rms}}$ , $f = 120\text{Hz}$ , $I_o = 100\text{mA}$	Fig.2
Load regulation 1	Reg. $L_1$	—	20	240	mV	$I_o = 5 \sim 500\text{mA}$	Fig.1
Load regulation 2	Reg. $L_2$	—	10	120	mV	$I_o = 5 \sim 200\text{mA}$	Fig.1
Temperature coefficient of output voltage	$T_{CVO}$	—	—0.5	—	mV/ $^\circ\text{C}$	$I_o = 5\text{mA}$ , $T_j = 0 \sim 125^\circ\text{C}$	Fig.1
Output noise voltage	$V_n$	—	110	—	$\mu\text{V}$	$f = 10\text{Hz} \sim 100\text{kHz}$	Fig.3
Minimum I/O voltage differential	$V_d$	—	2.0	—	V	$I_o = 500\text{mA}$	Fig.4
Bias current	$I_b$	—	4.5	6.0	mA	$I_o = 0\text{mA}$	Fig.5
Bias current change 1	$I_{b1}$	—	—	0.5	mA	$I_o = 5 \sim 350\text{mA}$	Fig.5
Bias current change 2	$I_{b2}$	—	—	0.8	mA	$V_{IN} = 14.5 \sim 30\text{V}$ , $I_o = 200\text{mA}$	Fig.5
Peak output current	$I_{O-P}$	—	875	—	mA	$T_j = 25^\circ\text{C}$	Fig.1
Output short-circuit current	$I_{OS}$	—	0.17	—	A	$V_{IN} = 30\text{V}$	Fig.6

〈BA178M15T / FP individual specifications〉 (unless otherwise noted,  $T_a = 25^\circ\text{C}$ ,  $V_{IN} = 23\text{V}$ ,  $I_o = 350\text{mA}$ )

Parameter	Symbol	Min.	Typ.	Max.	Unit	Conditions	Measurement circuit
Output voltage 1	$V_{O1}$	14.4	15.0	15.6	V	$I_o = 350\text{mA}$	Fig.1
Output voltage 2	$V_{O2}$	14.25	—	15.75	V	$V_{IN} = 17.5 \sim 30\text{V}$ , $I_o = 5 \sim 350\text{mA}$	Fig.1
Input stability 1	Reg. $I_1$	—	6	100	mV	$V_{IN} = 17.5 \sim 30\text{V}$ , $I_o = 200\text{mA}$	Fig.1
Input stability 2	Reg. $I_2$	—	3	50	mV	$V_{IN} = 20 \sim 30\text{V}$ , $I_o = 200\text{mA}$	Fig.1
Ripple rejection ratio	R.R.	54	60	—	dB	$e_{IN} = 1\text{V}_{rms}$ , $f = 120\text{Hz}$ , $I_o = 100\text{mA}$	Fig.2
Load regulation 1	Reg. $L_1$	—	20	300	mV	$I_o = 5 \sim 500\text{mA}$	Fig.1
Load regulation 2	Reg. $L_2$	—	10	150	mV	$I_o = 5 \sim 200\text{mA}$	Fig.1
Temperature coefficient of output voltage	$T_{CVO}$	—	—0.6	—	mV/ $^\circ\text{C}$	$I_o = 5\text{mA}$ , $T_j = 0 \sim 125^\circ\text{C}$	Fig.1
Output noise voltage	$V_n$	—	130	—	$\mu\text{V}$	$f = 10\text{Hz} \sim 100\text{kHz}$	Fig.3
Minimum I/O voltage differential	$V_d$	—	2.0	—	V	$I_o = 500\text{mA}$	Fig.4
Bias current	$I_b$	—	4.5	6.0	mA	$I_o = 0\text{mA}$	Fig.5
Bias current change 1	$I_{b1}$	—	—	0.5	mA	$I_o = 5 \sim 350\text{mA}$	Fig.5
Bias current change 2	$I_{b2}$	—	—	0.8	mA	$V_{IN} = 17.5 \sim 30\text{V}$ , $I_o = 200\text{mA}$	Fig.5
Peak output current	$I_{O-P}$	—	875	—	mA	$T_j = 25^\circ\text{C}$	Fig.1
Output short-circuit current	$I_{OS}$	—	0.17	—	A	$V_{IN} = 30\text{V}$	Fig.6

〈BA178M18T / FP individual specifications〉 (unless otherwise noted,  $T_a = 25^\circ\text{C}$ ,  $V_{IN} = 27\text{V}$ ,  $I_o = 350\text{mA}$ )

Parameter	Symbol	Min.	Typ.	Max.	Unit	Conditions	Measurement circuit
Output voltage 1	$V_{O1}$	17.3	18.0	18.7	V	$I_o = 350\text{mA}$	Fig.1
Output voltage 2	$V_{O2}$	17.1	—	18.9	V	$V_{IN} = 21 \sim 33\text{V}$ , $I_o = 5 \sim 350\text{mA}$	Fig.1
Input stability 1	Reg. $I_1$	—	7	100	mV	$V_{IN} = 21 \sim 33\text{V}$ , $I_o = 200\text{mA}$	Fig.1
Input stability 2	Reg. $I_2$	—	3	50	mV	$V_{IN} = 24 \sim 33\text{V}$ , $I_o = 200\text{mA}$	Fig.1
Ripple rejection ratio	R.R.	53	58	—	dB	$e_{IN} = 1\text{V}_{rms}$ , $f = 120\text{Hz}$ , $I_o = 100\text{mA}$	Fig.2
Load regulation 1	Reg. $L_1$	—	20	360	mV	$I_o = 5 \sim 500\text{mA}$	Fig.1
Load regulation 2	Reg. $L_2$	—	10	180	mV	$I_o = 5 \sim 200\text{mA}$	Fig.1
Temperature coefficient of output voltage	$T_{CVO}$	—	—0.6	—	mV/ $^\circ\text{C}$	$I_o = 5\text{mA}$ , $T_j = 0 \sim 125^\circ\text{C}$	Fig.1
Output noise voltage	$V_n$	—	140	—	$\mu\text{V}$	$f = 10\text{Hz} \sim 100\text{kHz}$	Fig.3
Minimum I/O voltage differential	$V_d$	—	2.0	—	V	$I_o = 500\text{mA}$	Fig.4
Bias current	$I_b$	—	4.5	6.0	mA	$I_o = 0\text{mA}$	Fig.5
Bias current change 1	$I_{b1}$	—	—	0.5	mA	$I_o = 5 \sim 350\text{mA}$	Fig.5
Bias current change 2	$I_{b2}$	—	—	0.8	mA	$V_{IN} = 21 \sim 33\text{V}$ , $I_o = 200\text{mA}$	Fig.5
Peak output current	$I_{O-P}$	—	875	—	mA	$T_j = 25^\circ\text{C}$	Fig.1
Output short-circuit current	$I_{OS}$	—	0.17	—	A	$V_{IN} = 30\text{V}$	Fig.6

〈BA178M20T / FP individual specifications〉 (unless otherwise noted,  $T_a = 25^\circ\text{C}$ ,  $V_{IN} = 29\text{V}$ ,  $I_o = 350\text{mA}$ )

Parameter	Symbol	Min.	Typ.	Max.	Unit	Conditions	Measurement circuit
Output voltage 1	$V_{O1}$	19.2	20.0	20.8	V	$I_o=350\text{mA}$	Fig.1
Output voltage 2	$V_{O2}$	19.0	—	21.0	V	$V_{IN}=23\sim33\text{V}$ , $I_o=5\sim350\text{mA}$	Fig.1
Input stability 1	Reg.L1	—	8	100	mV	$V_{IN}=23\sim33\text{V}$ , $I_o=200\text{mA}$	Fig.1
Input stability 2	Reg.L2	—	4	50	mV	$V_{IN}=24\sim33\text{V}$ , $I_o=200\text{mA}$	Fig.1
Ripple rejection ratio	R.R.	53	58	—	dB	$e_{IN}=1V_{rms}$ , $f=120\text{Hz}$ , $I_o=100\text{mA}$	Fig.2
Load regulation 1	Reg.L1	—	20	400	mV	$I_o=5\sim500\text{mA}$	Fig.1
Load regulation 2	Reg.L2	—	10	200	mV	$I_o=5\sim200\text{mA}$	Fig.1
Temperature coefficient of output voltage	$T_{CVO}$	—	-0.7	—	mV/ $^\circ\text{C}$	$I_o=5\text{mA}$ , $T_j=0\sim125^\circ\text{C}$	Fig.1
Output noise voltage	$V_n$	—	150	—	$\mu\text{V}$	$f=10\text{Hz}\sim100\text{kHz}$	Fig.3
Minimum I/O voltage differential	$V_d$	—	2.0	—	V	$I_o=500\text{mA}$	Fig.4
Bias current	$I_b$	—	4.5	6.0	mA	$I_o=0\text{mA}$	Fig.5
Bias current change 1	$I_{b1}$	—	—	0.5	mA	$I_o=5\sim350\text{mA}$	Fig.5
Bias current change 2	$I_{b2}$	—	—	0.8	mA	$V_{IN}=23\sim33\text{V}$ , $I_o=200\text{mA}$	Fig.5
Peak output current	$I_{O-P}$	—	875	—	mA	$T_j=25^\circ\text{C}$	Fig.1
Output short-circuit current	$I_{OS}$	—	0.17	—	A	$V_{IN}=30\text{V}$	Fig.6

〈BA178M24T / FP individual specifications〉 (unless otherwise noted,  $T_a = 25^\circ\text{C}$ ,  $V_{IN} = 33\text{V}$ ,  $I_o = 350\text{mA}$ )

Parameter	Symbol	Min.	Typ.	Max.	Unit	Conditions	Measurement circuit
Output voltage 1	$V_{O1}$	23.0	24.0	25.0	V	$I_o=350\text{mA}$	Fig.1
Output voltage 2	$V_{O2}$	22.8	—	25.2	V	$V_{IN}=27\sim33\text{V}$ , $I_o=5\sim350\text{mA}$	Fig.1
Input stability 1	Reg.L1	—	10	100	mV	$V_{IN}=27\sim33\text{V}$ , $I_o=200\text{mA}$	Fig.1
Input stability 2	Reg.L2	—	5	50	mV	$V_{IN}=28\sim33\text{V}$ , $I_o=200\text{mA}$	Fig.1
Ripple rejection ratio	R.R.	50	55	—	dB	$e_{IN}=1V_{rms}$ , $f=120\text{Hz}$ , $I_o=100\text{mA}$	Fig.2
Load regulation 1	Reg.L1	—	20	480	mV	$I_o=5\sim500\text{mA}$	Fig.1
Load regulation 2	Reg.L2	—	10	240	mV	$I_o=5\sim200\text{mA}$	Fig.1
Temperature coefficient of output voltage	$T_{CVO}$	—	-0.7	—	mV/ $^\circ\text{C}$	$I_o=5\text{mA}$ , $T_j=0\sim125^\circ\text{C}$	Fig.1
Output noise voltage	$V_n$	—	170	—	$\mu\text{V}$	$f=10\text{Hz}\sim100\text{kHz}$	Fig.3
Minimum I/O voltage differential	$V_d$	—	2.0	—	V	$I_o=500\text{mA}$	Fig.4
Bias current	$I_b$	—	4.8	6.0	mA	$I_o=0\text{mA}$	Fig.5
Bias current change 1	$I_{b1}$	—	—	0.5	mA	$I_o=5\sim350\text{mA}$	Fig.5
Bias current change 2	$I_{b2}$	—	—	0.8	mA	$V_{IN}=27\sim33\text{V}$ , $I_o=200\text{mA}$	Fig.5
Peak output current	$I_{O-P}$	—	875	—	mA	$T_j=25^\circ\text{C}$	Fig.1
Output short-circuit current	$I_{OS}$	—	0.17	—	A	$V_{IN}=30\text{V}$	Fig.6

## ● Measurement circuits

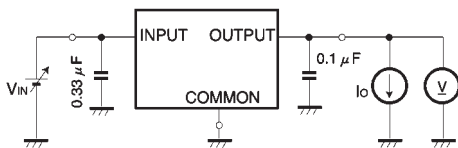


Fig. 1 Measurement circuit for output voltage, input stability, load regulation, temperature coefficient of output voltage

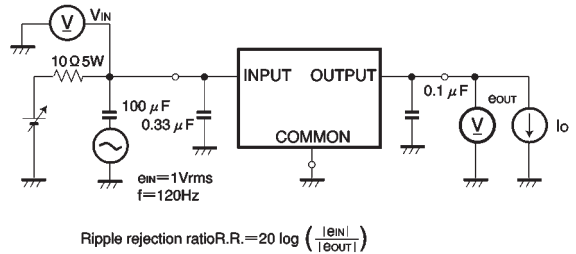


Fig. 2 Measurement circuit for ripple rejection ratio

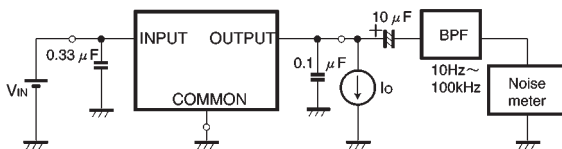


Fig. 3 Measurement circuit for output noise voltage

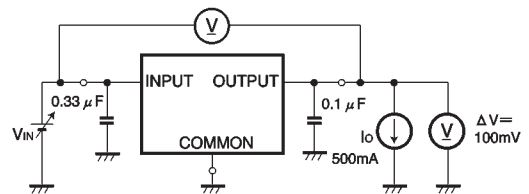


Fig. 4 Measurement circuit for Minimum I/O voltage differential

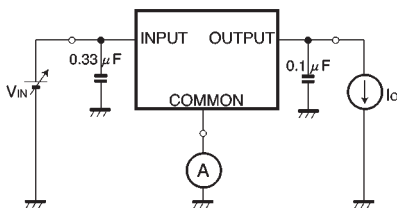


Fig. 5 Measurement circuit for bias current and bias current change

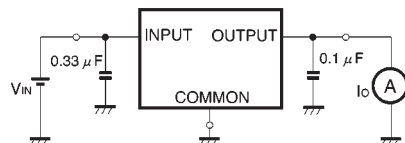


Fig. 6 Measurement circuit for output short-circuit current

## ●Electrical characteristic curves

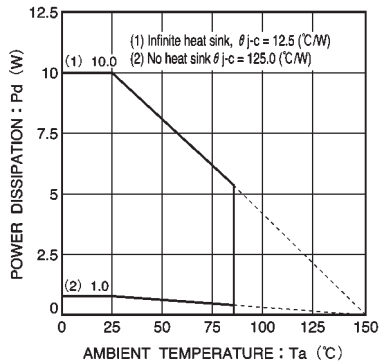
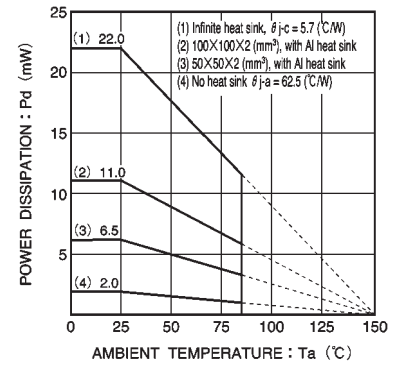
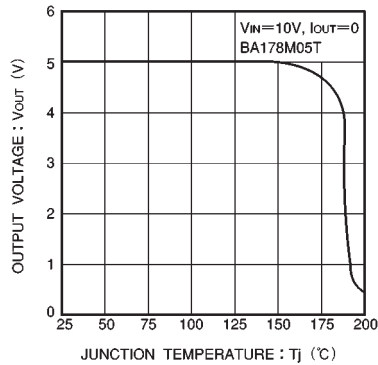
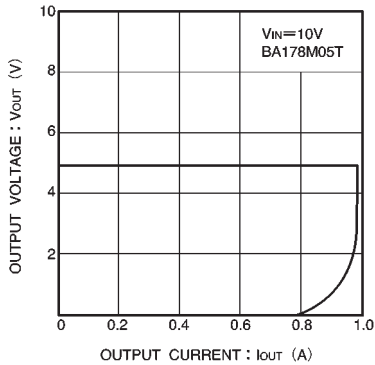


Fig.10 Thermal derating characteristic (TO252-3)

**●Operation notes**

(1) Although the circuit examples included in this handbook are highly recommendable for general use, you should thoroughly familiarize yourself with the circuit characteristics as they relate to your own conditions. If you intend to change the number of external circuits, leave an ample margin, taking into account discrepancies in both static and dynamic characteristics of external parts and Rohm ICs. In addition, please be advised that Rohm cannot provide complete assurance regarding patent rights.

**(2) Operating power supply voltage**

When operating within the normal voltage range and within the ambient operating temperature range, most circuit functions are guaranteed. The rated values cannot be guaranteed for the electrical characteristics, but there are no sudden changes of the characteristics within these ranges.

**(3) Power dissipation**

Heat attenuation characteristics are noted on a separate page and can be used as a guide in judging power dissipation.

If these ICs are used in such a way that the allowable power dissipation level is exceeded, an increase in the chip temperature could cause a reduction in the current capability or could otherwise adversely affect the performance of the IC. Make sure a sufficient margin is allowed so that the allowable power dissipation value is not exceeded.

**(4) Preventing oscillation in output and using bypass capacitors**

Always use a capacitor between the output pins and the GND to prevent fluctuation in the output and to prevent

oscillation between the output pins and the GN of the application's input ( $V_{IN}$   $\mu$ F should be used.)

Changes in the temperature and other factors can cause the value of the capacitor to change, and this can cause oscillation. To prevent this, we recommend using a tantalum capacitor which has minimal changes in nominal capacitance.

Also, we recommend adding a bypass capacitor of about 0.33 $\mu$ F between the input pin and the GND, as close to the pin as possible.

**(5) Thermal overload circuit**

A built-in thermal overload circuit prevents damage from overheating. When the thermal circuit is activated, the various outputs are in the OFF state. When the temperature drops back to a constant level, the circuit is restored.

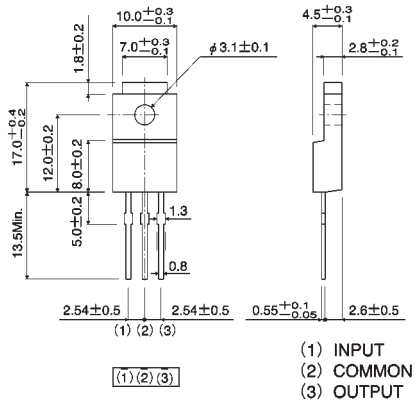
(6) Internal circuits could be damaged if there are modes in which the electric potential of the application's input ( $V_{IN}$ ) and GND are the opposite of the electric potential of the various outputs. Use of a diode or other such bypass path is recommended.

(7) Although the manufacture of this product includes rigorous quality assurance procedures, the product may be damaged if absolute maximum ratings for voltage or operating temperature are exceeded. If damage has occurred, special modes (such as short circuit mode or open circuit mode) cannot be specified. If it is possible that such special modes may be needed, please consider using a fuse or some other mechanical safety measure.

(8) When used within a strong magnetic field, be aware that there is a slight possibility of malfunction.

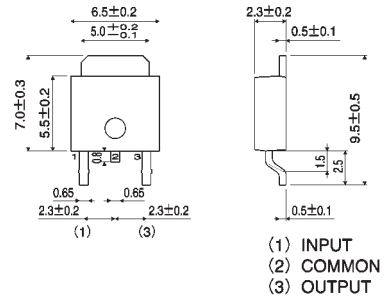
## ● External dimensions (Units: mm)

BA178MOOT Series



TO220FP

BA178MOOFP Series



TO252-3