



*Our Focus is in Plastics*

**Polymer Optics Ltd.**

6 Kiln Ride, Wokingham,  
Berks., RG40 3JL, England  
Tel/Fax: +44 (0) 1189 893341  
[www.polymer-optics.co.uk](http://www.polymer-optics.co.uk)

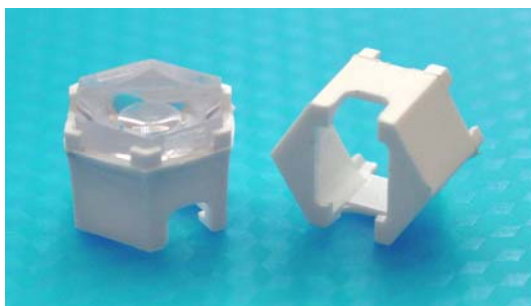
## **6 Degree Diffuse XR-E Collimator Lens - Part No. 186**



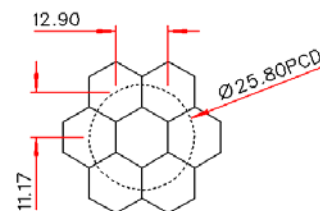
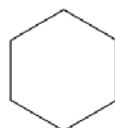
- Specifically designed for Cree XR-E and XR-C High Power LEDs
- High light collection efficiency of >85%
- Precision moulded in optical grade Polycarbonate for thermal stability and system durability
- Part of the Polymer Optics "Modular LED Optics"® range

**Polymer Optics "Modular LED Optics"® design, based on a hexagonal format, allows maximum packing density and assembly flexibility**

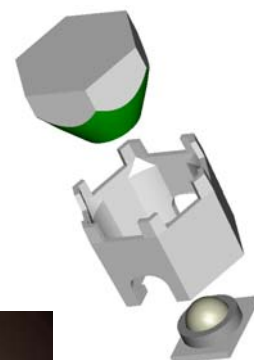
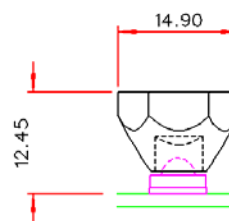
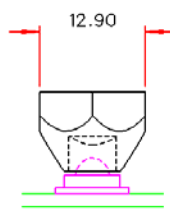
**Supplied with Holder (Part No. 147) to mount optics directly on to PCB's. Holder locates on LED package to ensure correct alignment**



Typical dimensional tolerances to +/-0.2mm



NESTED COMPONENTS ON 25,8MM PCD



The latest Cree XR-E die technology, in some applications, produces a slightly square beam profile. This is due to the precise optical handling characteristics of the POL LED optics range.



To remove this potential issue, POL have introduced the new 186 optic which diffuses the square die form of the LED into a more uniform round beam with minimal increase in the collimation divergence angle

The rest of the POL range of LED optics which provide wider angles, beam concentration or other beam profile functions all provide similar beam averaging within the optic itself.



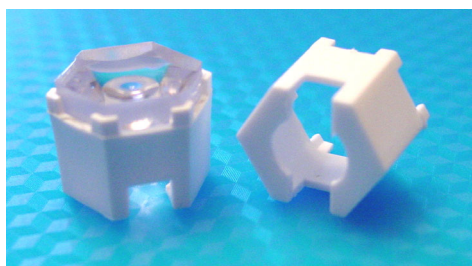
**Polymer  
Optics  
Limited**

*Our Focus is in Plastics*

## Polymer Optics Ltd.

6 Kiln Ride, Wokingham,  
Berks., RG40 3JL, England  
Tel/Fax: +44 (0) 1189 893341  
[www.polymer-optics.co.uk](http://www.polymer-optics.co.uk)

### Standard Lens Holder - Part No. 121

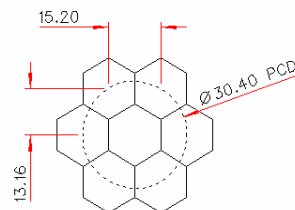
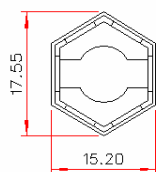
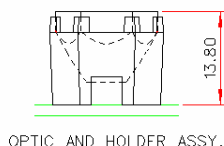
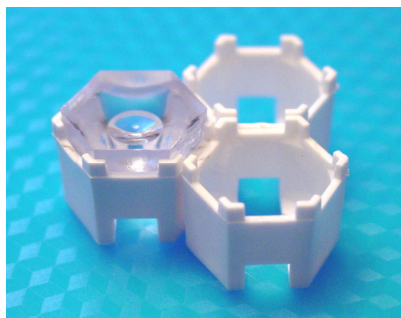


- Designed for use with Polymer Optics “Modular LED Optics”® and other custom Polymer Optics designs
- Designed for LUXEON® I Star and LUXEON® I, III, and V Emitter populated PCB's
- Simply mounts onto PCB and self-aligns to LUXEON® Emitter
- Precision moulded in optical grade Polycarbonate for thermal stability and system durability
- Part of the Polymer Optics “Modular LED Optics”® range

Polymer Optics “Modular LED Optics”® design, based on a hexagonal format, allows maximum packing density and assembly flexibility

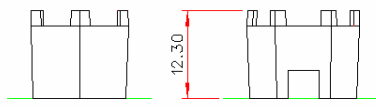
Alternative Star Holder (Part No. 128) available for LUXEON® I and III Star formats which have different mounting heights

K2 Holder available for LUXEON® K2 Emitter



NESTED COMPONENTS ON 30.4MM PCD

Typical dimensional tolerances to  $\pm 0.2\text{mm}$



Polymer Optics Limited is a certified  
Lumileds-Future Partner



**121 Holder and 120 Optic mounted on  
LUXEON® I Star PCB**

