

- **Ideal Front-End Filter for European Wireless Receivers**
- **Low-Loss, Coupled-Resonator Quartz Design**
- **Simple External Impedance Matching**
- **Complies with Directive 2002/95/EC (RoHS)**

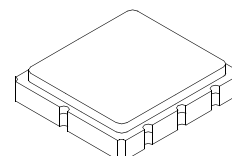


The RF1414D is a low-loss, compact, and economical surface-acoustic-wave (SAW) filter designed to provide front-end selectivity in 372.500 MHz receivers. Receiver designs using this filter include superhet with 10.7 MHz or 500 kHz IF, direct conversion and superregen. Typical applications of these receivers are wireless remote-control and security.

This coupled-resonator filter (CRF) uses selective null placement to provide suppression, typically greater than 40 dB, of the LO and image spurious responses of superhet receivers with 10.7 MHz IF. Murata's advanced SAW design and fabrication technology is utilized to achieve high performance and very low loss with simple external impedance matching.

**RF1414D**

**372.500 MHz  
SAW Filter**



**SM3838-8 Case  
3.8 x 3.8**

Characteristic	Sym	Notes	Minimum	Typical	Maximum	Units
Center Frequency at 25°C Absolute Frequency	$f_c$	1, 2, 3		372.500		MHz
Insertion Loss	$IL_{MIN}$	1, 3		2.1	3.0	dB
3 dB Bandwidth	$BW_3$	1, 3	350		500	kHz
Rejection Attenuation: (relative to $IL_{min}$ )						
10 - 354 MHz			45	50		
354 - 364 MHz			35	40		
364 - 369 MHz			25	30		
369 - 370 MHz			14	15		
374 - 378 MHz			25	30		
378 - 380 MHz			15	20		
380 - 382 MHz			20	25		
382 - 389 MHz			25	28		
389 - 550 MHz			45	50		
550 - 1000 MHz			40	45		
Temperature Freq. Temp. Coefficient	FTC			0.032		ppm/°C <sup>2</sup>
Frequency Aging Absolute Value during the First Year	$ fA $	5		≤10		ppm/yr
Impedance @ $f_c$						
Input $Z_{IN} = R_{IN}    C_{IN}$	$Z_{IN}$			27.8 // 2.3 pf		
Output $Z_{OUT} = R_{OUT}    C_{OUT}$	$Z_{OUT}$			41 // 2.3 pf		
Lid Symbolization (Y=year WW=week S=shift)				528 // YWWS		
Standard Reel Quantity						
Reel Size 7 Inch				500 Pieces/Reel		
Reel Size 13 Inch				3000 Pieces/Reel		



**CAUTION: Electrostatic Sensitive Device. Observe precautions for handling.**

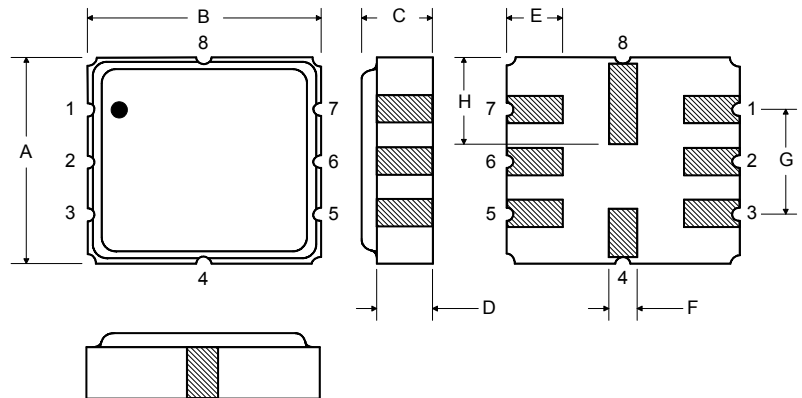
**NOTES:**

1. Unless noted otherwise, all measurements are made with the filter installed in the specified test fixture which is connected to a 50  $\Omega$  test system with VSWR  $\leq$  1.2:1. The test fixture L and C are adjusted for minimum insertion loss at the filter center frequency,  $f_c$ . Note that insertion loss and bandwidth and passband shape are dependent on the impedance matching component values and quality.
2. The frequency  $f_c$  is defined as the midpoint between the 3dB frequencies.
3. Where noted specifications apply over the entire specified operating temperature range of -40°C to +90°C.
4. The turnover temperature,  $T_O$ , is the temperature of maximum (or turnover) frequency,  $f_o$ . The nominal frequency at any case temperature,  $T_c$ , may be calculated from:  
 $f = f_o [1 - FTC (T_o - T_c)^2]$ .
5. Frequency aging is the change in  $f_c$  with time and is specified at +65°C or less. Aging may exceed the specification for prolonged temperatures above +65°C. Typically, aging is greatest the first year after manufacture, decreasing significantly in subsequent years.
6. The design, manufacturing process, and specifications of this device are subject to change.
7. One or more of the following U.S. Patents apply: 4,54,488, 4,616,197, and others pending.
8. All equipment designs utilizing this product must be approved by the appropriate government agency prior to manufacture or sale.
9. Tape and Reel Standard Per ANSI / EIA 481.

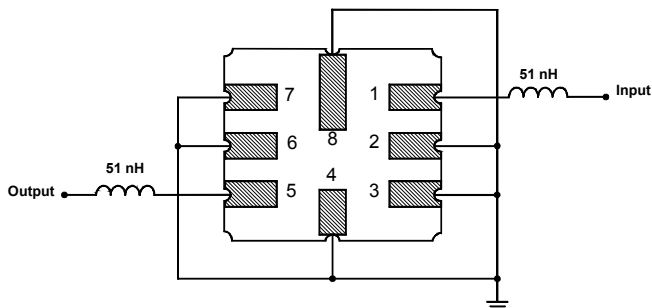
Rating	Value	Units
Input Power Level	10	dBm
DC Voltage	12	VDC
Storage Temperature	-40 to +125	°C
Operable Temperature Range	-40 to +125	°C
Soldering Temperature	(10 seconds / 5 cycles max.)	260 °C

#### Electrical Connections

Pin	Connection
1	Input
2	Input Ground
3	Ground
4	Case Ground
5	Output
6	Output Ground
7	Ground
8	Case Ground



#### Matching Circuit to 50Ω



#### Case Dimensions

Dimension	mm			Inches		
	Min	Nom	Max	Min	Nom	Max
A	3.6	3.8	4.0	0.14	0.15	0.16
B	3.6	3.8	4.0	0.14	0.15	0.16
C	1.00	1.20	1.40	0.04	0.05	0.055
D	0.95	1.10	1.25	0.033	0.043	0.05
E	0.90	1.0	1.10	0.035	0.04	0.043
F	0.50	0.6	0.70	0.020	0.024	0.028
G	2.39	2.54	2.69	0.090	0.100	0.110
H	1.40	1.75	2.05	0.055	0.069	0.080

Optional

#### Electrical Connections

Pin	Connection
1	Input Ground
2	Input
3	Input Ground
4	Case Ground
5	Output Ground
6	Output
7	Output Ground
8	Case Ground

#### Matching Circuit to 50Ω

