

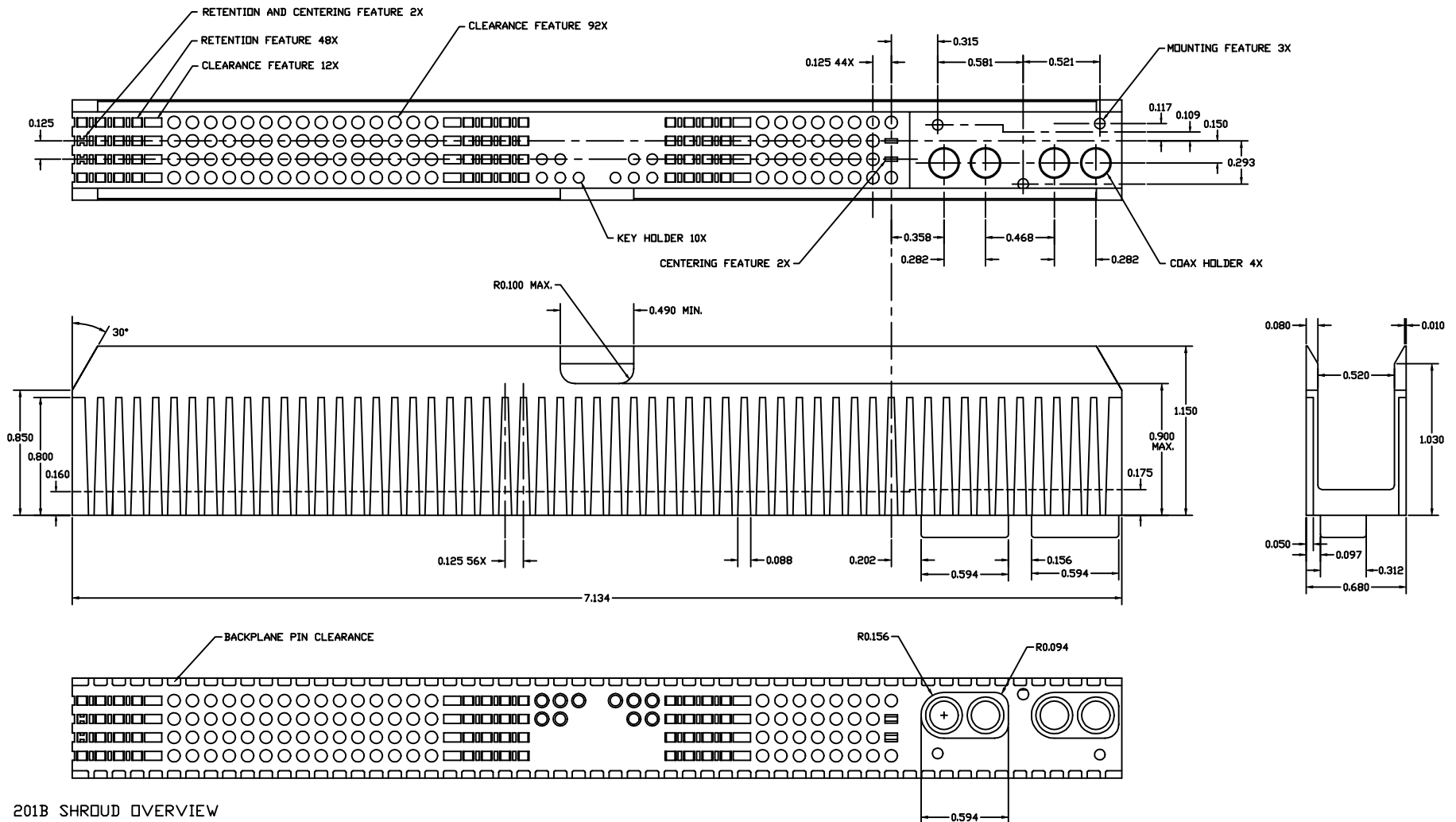
Tous droits strictement reserves. Reproduction ou communication a des tiers interdite sous quelque forme que ce soit sans autorisation écrite du propriétaire. Propriete de c FCI. Droits de reproduction FCI.

All rights strictly reserved. Reproduction or issue to third parties in any form whatever is not permitted without written authority from the proprietor. Property of FCI. Copyright FCI.



PRODUCT NO.
201-B

201B SHROUD FOR USE WITH 963CM-152
CONNECTORS WITH 2 9639A MODULES



201B SHROUD OVERVIEW

THE 201B SHROUD IS DESIGNED FOR USE WITH FASTECH® HARDWARE AND PERFORMS THE FOLLOWING FUNCTIONS:

- + CAN ACCOMMODATE UP TO (4) KS-22694 COAX PLUGS
- + ASSISTS IN GUIDING THE 963CM-152 CIRCUIT PACK CONNECTOR WITH (2) 9639A MODULES ON TO THE PINS
- + HOLDS STANDARD FASTECH® KEYING PINS
- + ASSISTS IN STIFFENING THE BACKPANEL

TECHNICAL SPECIFICATIONS:

MATERIAL: NORYL HS-100, 15% GLASS FILLED
FLAMMABILITY: UL 94 V-0
SHROUD INSTALLATION FORCE: 400 LBS TYPICAL
RETENTION FORCE: 240 LBS TYPICAL
KS-22694 COAX RETENTION FORCE: 20 LBS. MINIMUM
RECOMMENDED FASTENER (3 REQUIRED) #2-28 BF+, TORX FILLISTER HEAD
SCREW LENGTH (THREADED SECTION) = .175" + NOMINAL BACKPANEL THICKNESS
FASTENER DRIVE TORQUE: 36 IN-OZ TYPICAL

| mat'l. code | | | | tolerances unless otherwise specified | | CUSTOMER COPY | | FCI Electronics | |
|-------------|----------|-----|---------|---------------------------------------|------------|---------------|--|-----------------|--------------------|
| ltr | ecn no | dr | date | linear | | projection | | title | www.fciconnect.com |
| A | V12877 | CGD | 1/22/02 | linear | | | | 201B SHROUD | |
| | | | | angles | | | | product family | FASTECH |
| | | | | dr | L.SANDERS | 10/16/00 | | code | 213 |
| | | | | enr | L.R.CONRAD | 10/16/00 | | size | dwg no |
| | | | | chr | L.R.CONRAD | 10/16/00 | | A | A91KC4029 |
| | | | | appd | L.R.CONRAD | 10/16/00 | | scale | 1:1 |
| sheet index | revision | A | A | | | | | | |
| | sheet | 1 | 2 | | | | | | |

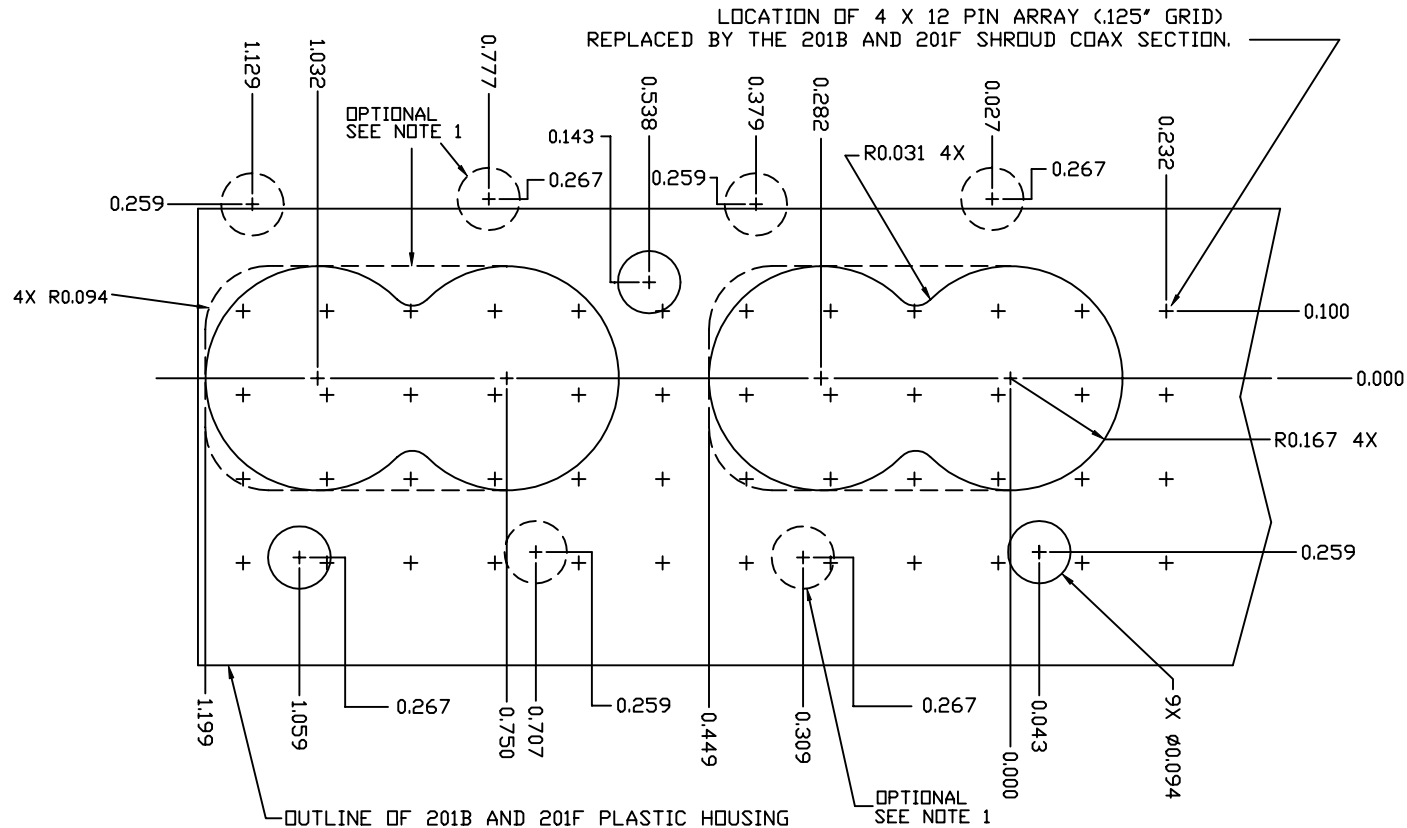
PRODUCT NO.

201-B

BACKPLANE LAYOUT FOR THE 201B AND 201F SHROUD COAX FEATURES AS VIEWED FROM THE CIRCUIT PACK SIDE

NOTES:

- 1) THE MOUNTING HOLES AND CUT-OUT SHOWN WITH DASHED LINES ARE OPTIONAL AND ALLOW USE OF
 2 9639B2 MODULES OR 1 9639B3 MODULE AS A SUBSTITUTE COAX HOLDER FOR A 201B OR 201F SHROUD



| | | | | | | | | | | | |
|-------------|----------------|----|------|---------------------------------------|--|------------|--|----------------|--|---|--|
| mat'l. code | | | | tolerances unless otherwise specified | | | | CUSTOMER COPY | | FCI Electronics www.fciconnect.com | |
| ltr | ecn no | dr | date | linear | | projection | | title | | | |
| A | | | | | | INCH | | 201B SHROUD | | | |
| | | | | angles | | INCH | | product family | | code | |
| | | | | dr L.SANDERS 10/16/00 | | scale | | FASTECH | | 213 | |
| | | | | enr L.R.CONRAD 10/16/00 | | 1:1 | | size dwg no | | sheet | |
| | | | | chr L.R.CONRAD 10/16/00 | | | | A A91KC4029 | | 2 of | |
| | | | | appd L.R.CONRAD 10/16/00 | | | | | | | |
| sheet index | revision sheet | | | | | | | | | | |