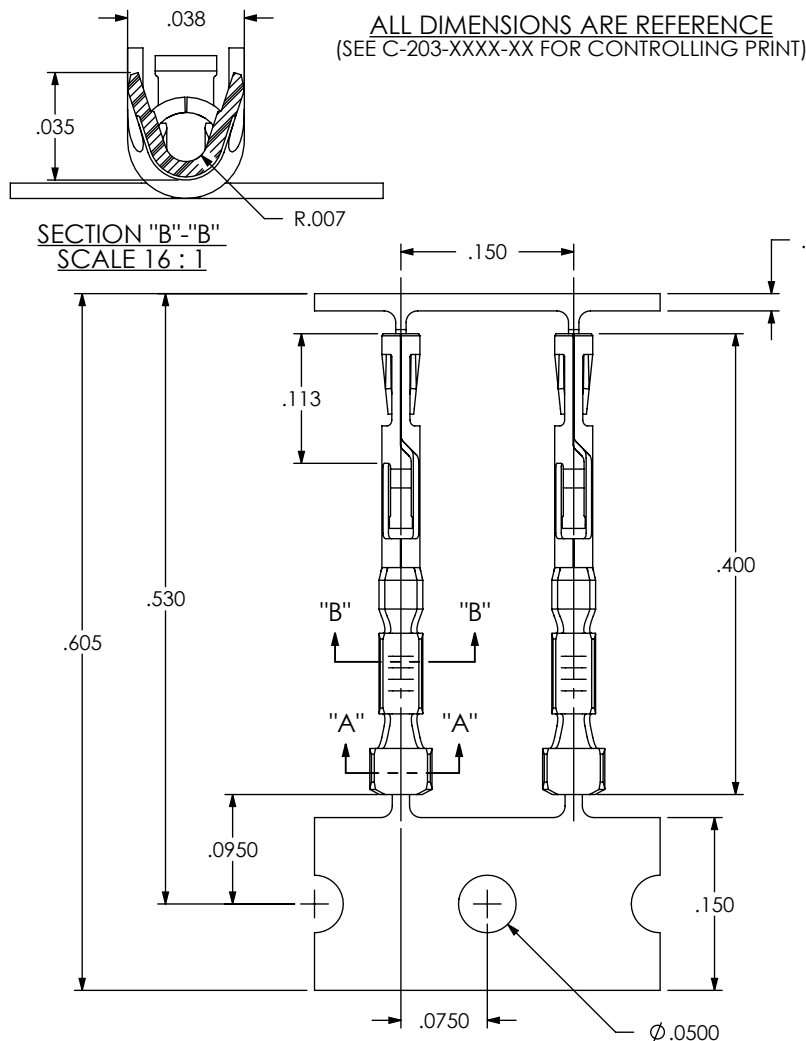


DO NOT
SCALE FROM
THIS PRINT



SUPPLIED

*L: LOOSE
R: REEL
M: MINI REEL (1K -5K CONTACTS)

(* =FOR EXISTING CUSTOMERS ONLY)

LEAD STYLE

-2830: 28-30 AWG

PLATING SPECIFICATION

-GF: 3μ" GOLD FLASH IN CONTACT AREA,
3μ" GOLD ON TAIL
-G: 10μ" LIGHT GOLD IN CONTACT AREA,
3μ" GOLD ON TAIL
-H: 30μ" HEAVY GOLD IN CONTACT AREA,
3μ" GOLD ON TAIL

OPTION
INSULATION THICKNESS:

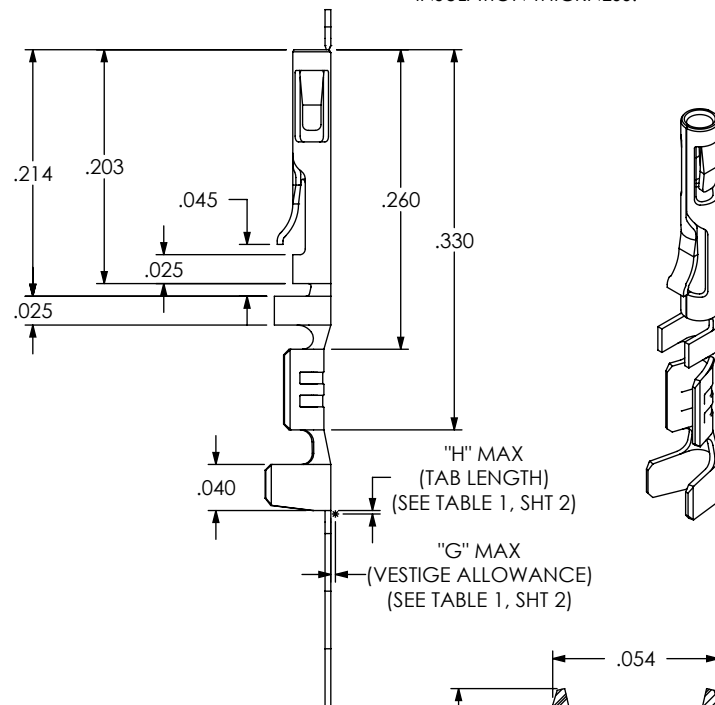


FIG 1
(CC03X-2830-01-X SHOWN)

NOTES:

1. PLATED C-203 PARTS TO BE PULLED, PLATING OPTION CONFIRMED, POSITIONED AS SHOWN ON SAMTEC REEL WITH VIEWPORTS, LABELED CC03R WITH APPROPRIATE PLATING CALLOUT AND LABEL PLACED AS SHOWN.
2. MAXIMUM NO OF SPLICES PER REEL:
-R: 2
-M: 1
3. SPLICES ARE NOT TO BE CONNECTED.
4. NUMBER OF SPLICES TO BE MARKED ON EACH REEL.
5. REELED PARTS TO BE INTERLEAVED WITH PAPER BETWEEN EACH LAYER OF PARTS.
6. ALLOWABLE INTERLEAF SPLICES PER REEL:
-R: 3
-M: 1
7. SECURELY CONNECT INTERLEAF SPLICE.
8. OUTER WRAP FOR PROTECTIVE REEL BAND AS BELOW:
-R: RB-24-0.75-P
-M: CRT-016-0.018
9. DUE TO PLATING REQUIREMENTS CONTACT SAMPLES MAY BE REMOVED INTERMITTINGLY FROM THE CARRIER RESULTING IN SMALL GAPS BUT DOES NOT AFFECT FINAL COUNT.
10. QTY PER REEL:
-R: 35,000 +700/-0 PCS
-M: 1,000 - 5,000 +300/-0 PCS

UNLESS OTHERWISE SPECIFIED,
DIMENSIONS ARE IN INCHES.
TOLERANCES ARE:
DECIMALS ANGLES

PROPRIETARY NOTE
THIS DOCUMENT CONTAINS CONFIDENTIAL AND
PROPRIETARY INFORMATION AND ALL DESIGN,
MANUFACTURING, REPRODUCTION, USE, PATENT RIGHTS
AND SALES RIGHTS ARE EXPRESSLY RESERVED BY SAMTEC,
INC. THIS DOCUMENT SHALL NOT BE DISCLOSED, IN WHOLE
OR PART, TO ANY UNAUTHORIZED PERSON OR ENTITY NOR
REPRODUCED, TRANSFERRED OR INCORPORATED IN ANY
OTHER PROJECT IN ANY MANNER WITHOUT THE EXPRESS
WRITTEN CONSENT OF SAMTEC, INC.

samtec

520 PARK EAST BLVD, NEW ALBANY, IN 47150
PHONE: 812-944-6733 FAX: 812-948-5047
e-Mail: info@SAMTEC.com code: 55322

MATERIAL:

BeCu

THICKNESS: .0050

DO NOT SCALE DRAWING

SHEET SCALE: 6:1

DESCRIPTION:

.050" C.L. DISCRETE WIRE CONTACT

DWG. NO.

CC03X-XXXX-01-XX

BY: BRATCHER 3/8/2005

SHEET 1 OF 2

F:\DWG\MISC\MKTG\CC03X-XXXX-01-XX-MKT.SLDDRW

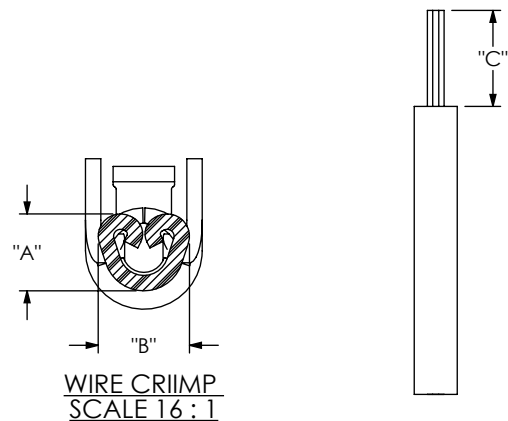


TABLE 1									
P/N	AWG	STRANDS/AWG	INSULATION OD	"A"	"B"	"C"	"G" MAX (VESTIGE LENGTH)	"H" MAX (TAB LENGTH)	PULL FORCE (LBS)
CC03X-2830-01-XX	30	7/38	.0290-.0380	0.0170	0.0300	0.105	0.08	0.02	2
	28	7/36		0.0180	0.0300		0.08	0.02	1.5

INSULATION STRIP LENGTH

FIG 2
RECOMENDED PROCESSING

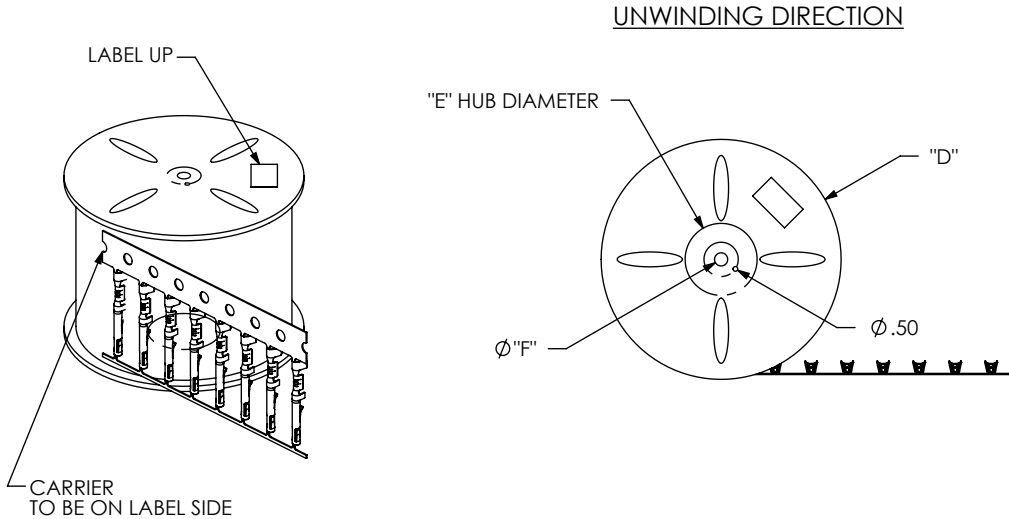


TABLE 2				
SUPPLIED	REEL PART NUMBER	"D"	"E"	"F"
-R	R-24-05.00-0.75-P	24.0	5.50	1.125
-M	MR-13.0-4.00-16	13.0	4.00	0.500

FIG 3
REEL SPECIFICATIONS

PROPRIETARY NOTE

THIS DOCUMENT CONTAINS CONFIDENTIAL AND PROPRIETARY INFORMATION AND ALL DESIGN, MANUFACTURING, REPRODUCTION, USE, PATENT RIGHTS AND SALES RIGHTS ARE EXPRESSLY RESERVED BY SAMTEC, INC. THIS DOCUMENT SHALL NOT BE DISCLOSED, IN WHOLE OR PART, TO ANY UNAUTHORIZED PERSON OR ENTITY NOR REPRODUCED, TRANSFERRED OR INCORPORATED IN ANY OTHER PROJECT IN ANY MANNER WITHOUT THE EXPRESS WRITTEN CONSENT OF SAMTEC, INC.

DO NOT SCALE DRAWING

SHEET SCALE: 6:1

520 PARK EAST BLVD, NEW ALBANY, IN 47150
PHONE: 812-944-6733 FAX: 812-948-5047
e-Mail: info@SAMTEC.com code: 55322

DESCRIPTION:
.050" C.L. DISCRETE WIRE CONTACT

DWG. NO.
CC03X-XXXX-01-XX

BY: BRATCHER 3/8/2005 SHEET 2 OF 2