

Customer Information Sheet

DRAWING No.: SI751-XX

SHEET 2 OF 2

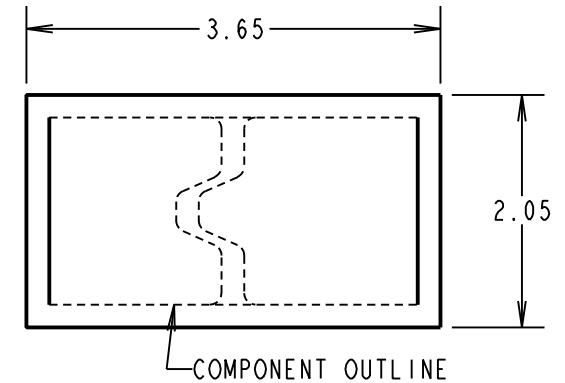
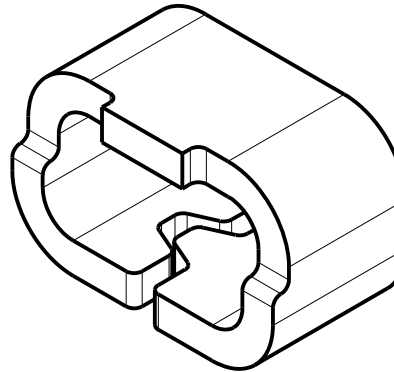
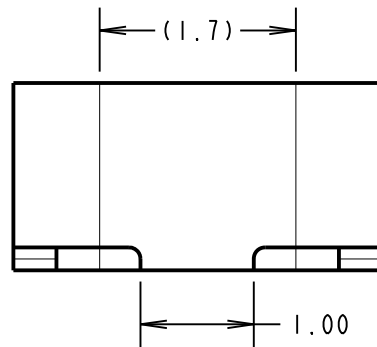
IF IN DOUBT - ASK

(C)

NOT TO SCALE

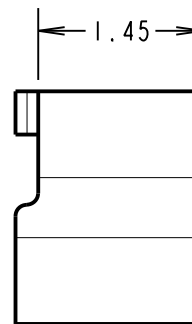
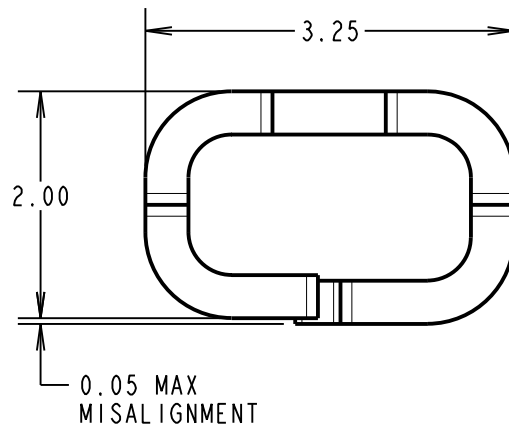
THIRD ANGLE PROJECTION

ALL DIMENSIONS IN mm



RECOMMENDED PAD LAYOUT

ORDER CODE	FINISH
SI751-06	TIN/LEAD
SI751-46	100% TIN



SPECIFICATIONS:
MATERIAL = BRASS CuZn30 1/2 HARD
FINISH:
06 = 4 μ 90/10 TIN/LEAD
46 = 4 μ 100% TIN
ELECTRICAL:
CURRENT RATING = 2A MAX
CONTACT RESISTANCE = 20m Ω MAX
ENVIRONMENTAL:
OPERATING TEMPERATURE = -55°C TO +125°C

- NOTES:
- FOR TAPE AND REELED COMPONENTS, SEE DRAWING SI751-XXR.
 - PACKING: 1,000 PER BAG.

SB	4	06.02.14	12358
NAME	ISS.	DATE	C/NOTE
APPROVED: S.BENNETT			
CHECKED: M.PLESTED			
DRAWN: W. J. BOURNE			
CUSTOMER REF.:			
ASSEMBLY DRG:			

HARWIN

www.harwin.com
technical@harwin.com

THIS DRAWING AND ANY INFORMATION OR DESCRIPTIVE MATTER SET OUT HEREON ARE CONFIDENTIAL AND COPYRIGHT PROPERTY OF THE HARWIN GROUP AND MUST NOT BE DISCLOSED, LOANED, COPIED OR USED FOR MANUFACTURING, TENDERING OR FOR ANY OTHER PURPOSE WITHOUT THEIR WRITTEN PERMISSION.

TOLERANCES
X. = ± 1 mm
X.X = ± 0.25 mm
X.XX = ± 0.10 mm
X.XXX = ± 0.01 mm
ANGLES = $\pm 5^\circ$
UNLESS STATED

MATERIAL:

SEE ABOVE

FINISH: SEE ABOVE

S/AREA: mm²

TITLE:

SURFACE MOUNT TEST TERMINAL
(LOOSE)

DRAWING NUMBER:

SI751-XX

SHT
2 OF 2