

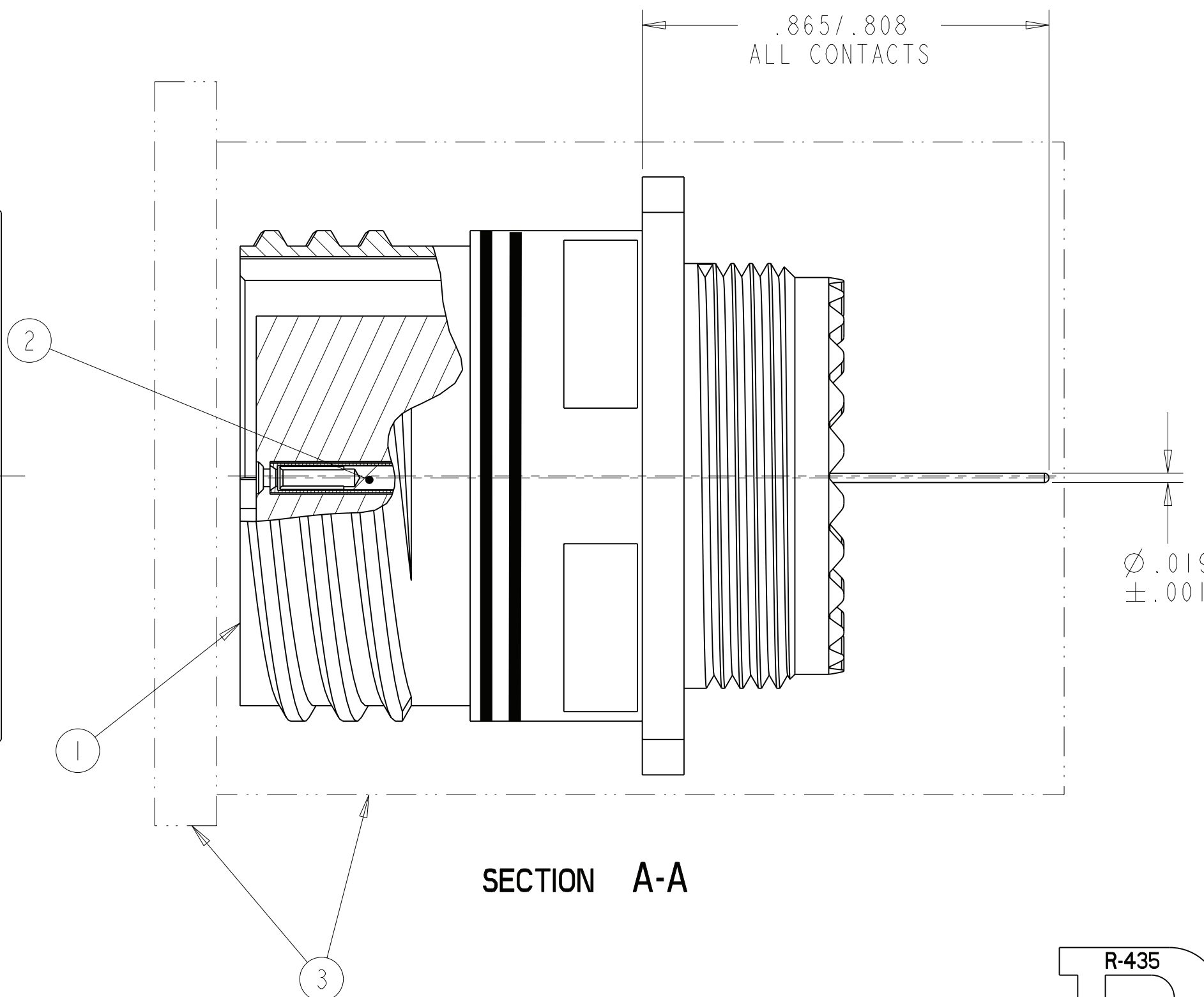
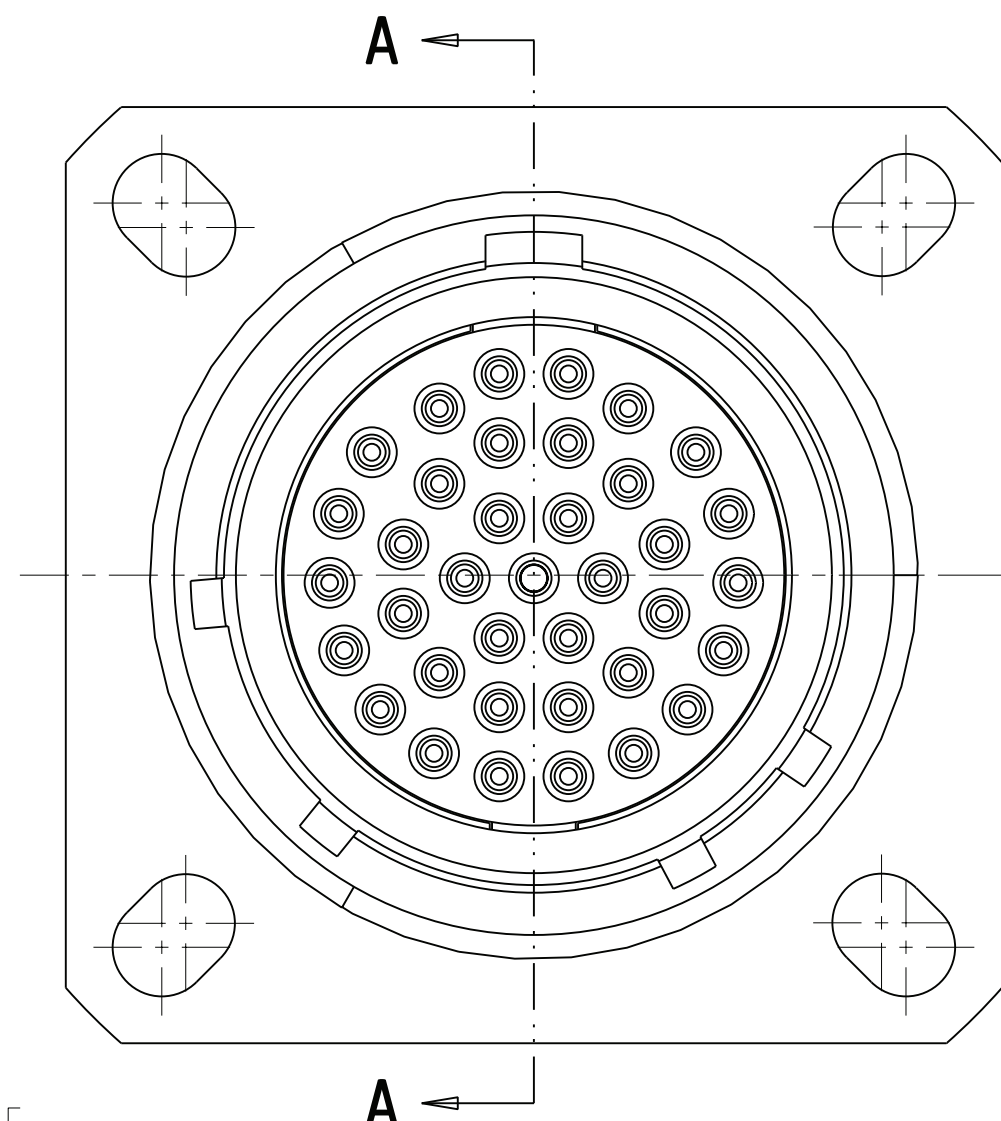
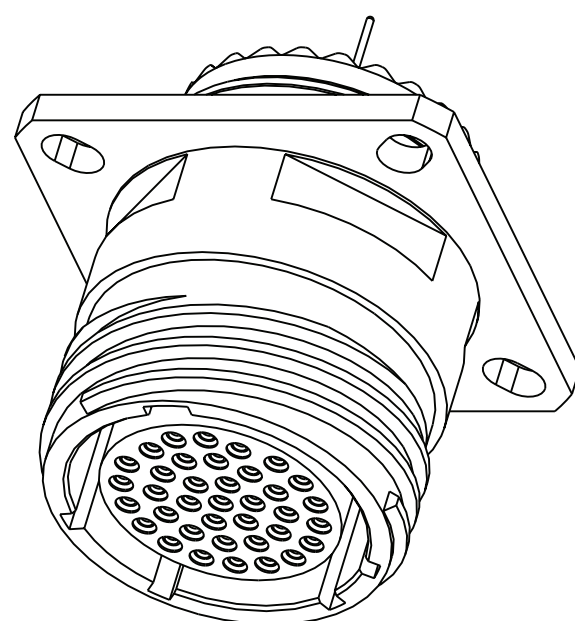
KIT PART NUMBER	CONNECTOR PART NUMBER	KIT TYPE	PCB CONTACT PART NUMBER	QTY.	MS REF NUMBER	CAP/CONTAINER
10-565997-988N	91-565834-35S	11	10-497623-535	37	D38999/20FD35BN	10-576238-001 10-576237-001
10-565997-988A	91-565834-35H				D38999/20FD35BA	
10-565997-988B	91-565834-35J				D38999/20FD35BB	
10-565997-988C	91-565834-35L				D38999/20FD35BC	
10-565997-988D	91-565834-35N				D38999/20FD35BD	
10-565997-988E	91-565834-35T				D38999/20FD35BE	

FOR UNIT ILLUSTRATION AND DIMENSIONAL DATA
SEE 10-536192-DS TYPE I

ALTERNATE-
SHELL ROTATION

CONNECTOR
LESS STAMPING
SEE NOTE 4
FOR STAMPING REQUIREMENT

—SEE NOTE 1



SECTION A-A

5. AFTER CONTACTS HAVE BEEN INSTALLED, PLACE CONNECTOR INTO CONTAINER AND CAP. TO INSURE CAP LOCATION APPLY TAPE IF NEEDED. CAR MUST BE TAKEN NOT TO BEND THE CONTACTS.

4. STAMP "APH 77820", PART NUMBER, DATE CODE (9-3895), AND LOT NUMBER PER 9-5788
EXAMPLE:
APH 77820 10-565997-988B 0948 09001000

3. PROCESS SPEC:
PROCESS SHEET CONTROL 9-4796
SPECIAL CONTROL 9-6000-2
9-3895, 9-5788

2. PACKAGE PER PRODUCTION PROCESS SHEET.

1. KIT TYPE I CONTACTS SHIPPED UNASSEMBLED.
KIT TYPE II CONTACTS SHIPPED ASSEMBLED IN
CONNECTOR.

NOTES:

THE USE OF THIS DOCUMENT IS UNLIMITED.
HOWEVER, DOCUMENTS REFERENCED HEREON
MAY CONTAIN LIMITED RIGHTS DATA.

RELEASED / Jan . 15 2010, 4:44:39 PM

10-565997-988

SHEET 1 OF 1

REV
A

D

C

REV. A

SHEET 1 OF 1

988

DOCUMENT NO.
10-565997

A