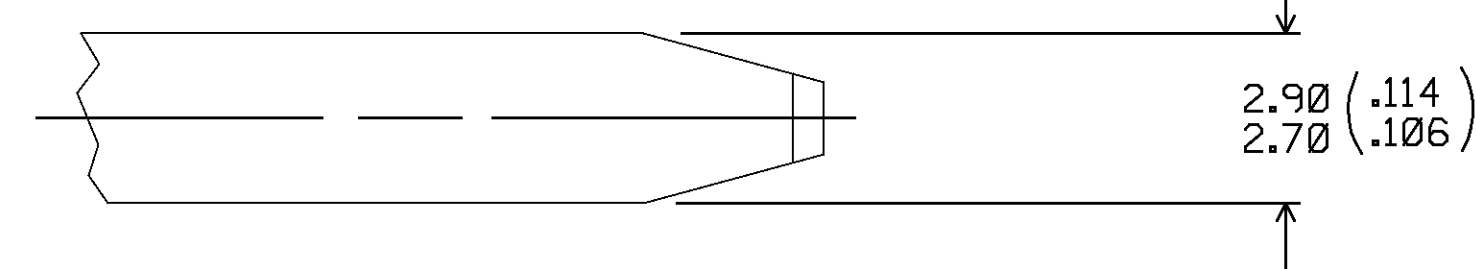


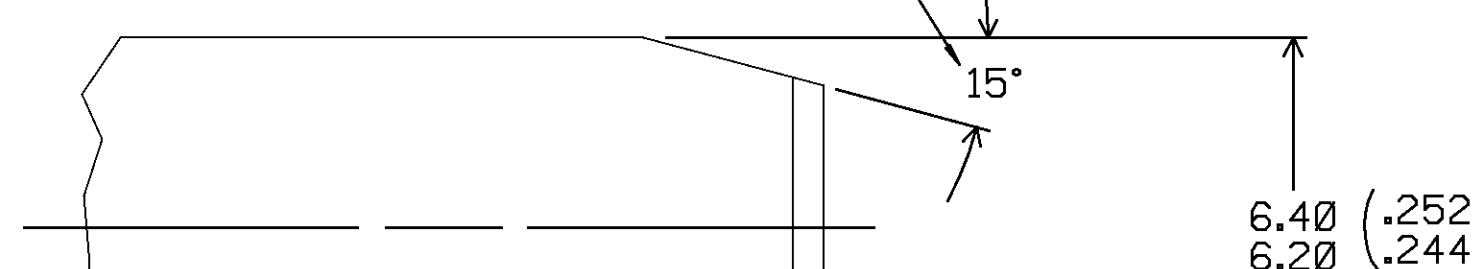
THIS DRAWING AND DESIGN HEREON CON-
STITUTES A PROPRIETARY DESIGN OF
PACKARD ELECTRIC DIVISION AND IS NOT
TO BE DUPLICATED OR REPRODUCED WITH-
OUT AUTHORITY OF PACKARD ELECTRIC
DIVISION.

MATING TERMINAL INFORMATION

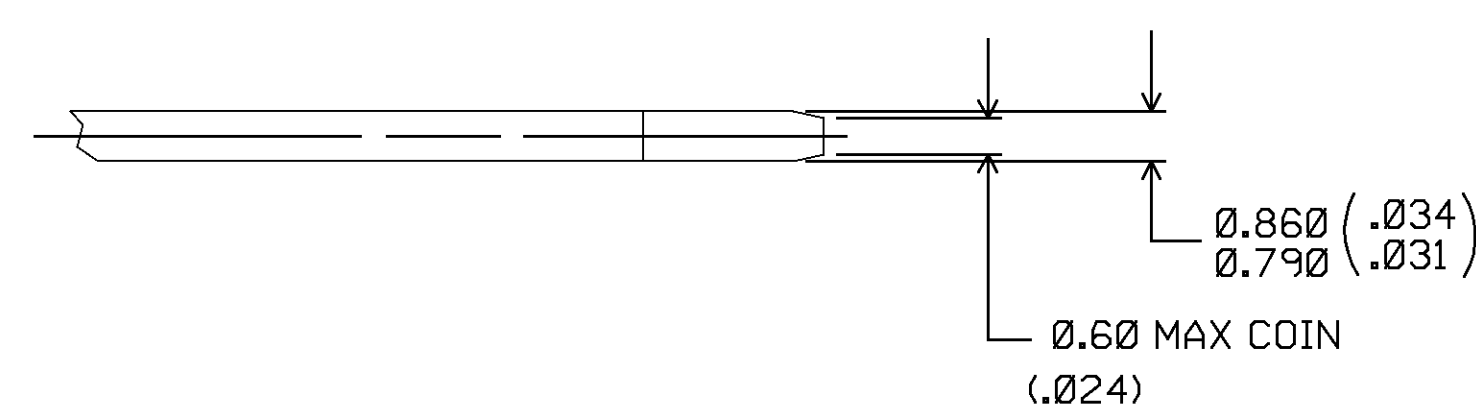
(SCALE 8:1)



PREFERRED, 45° ACCEPTABLE



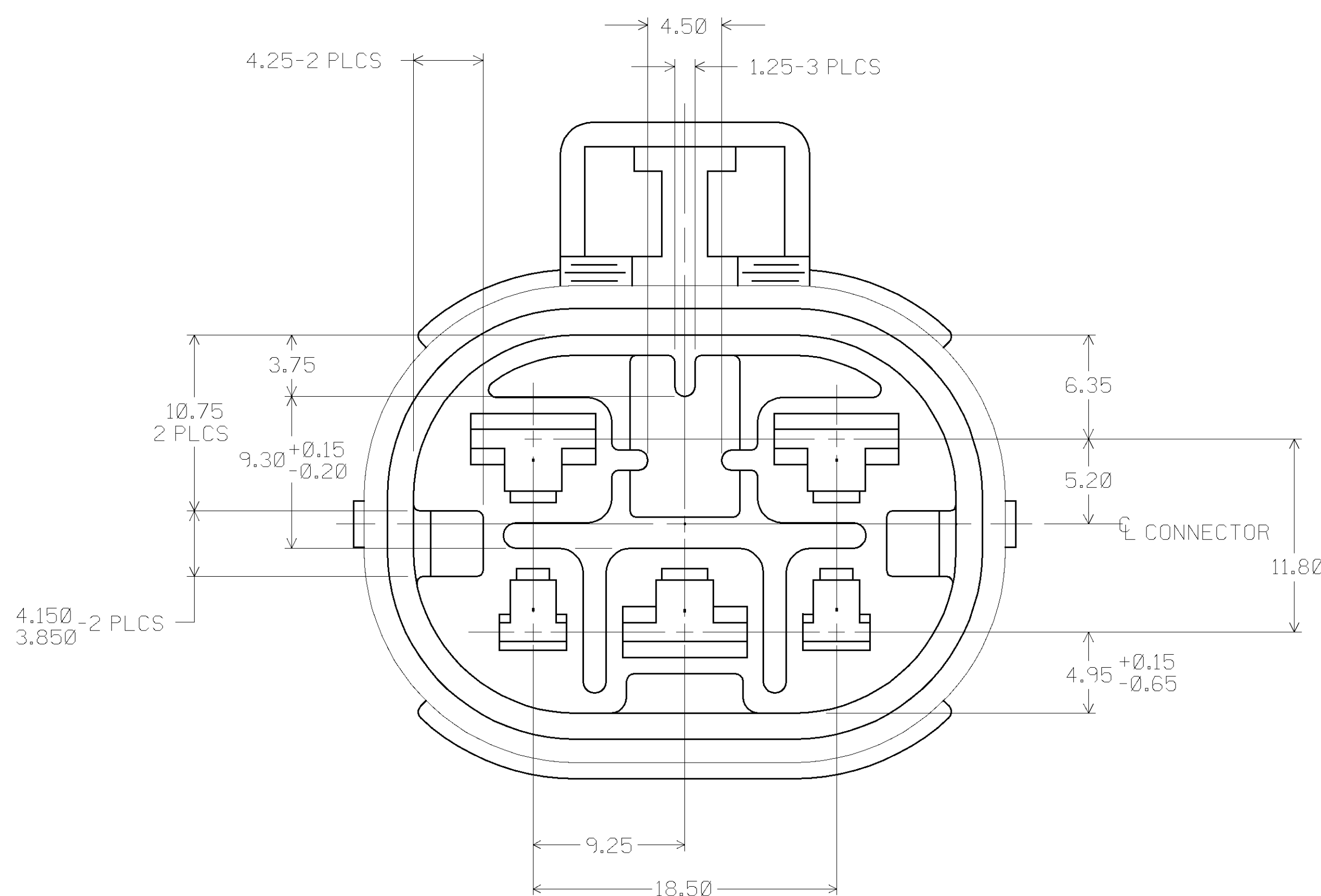
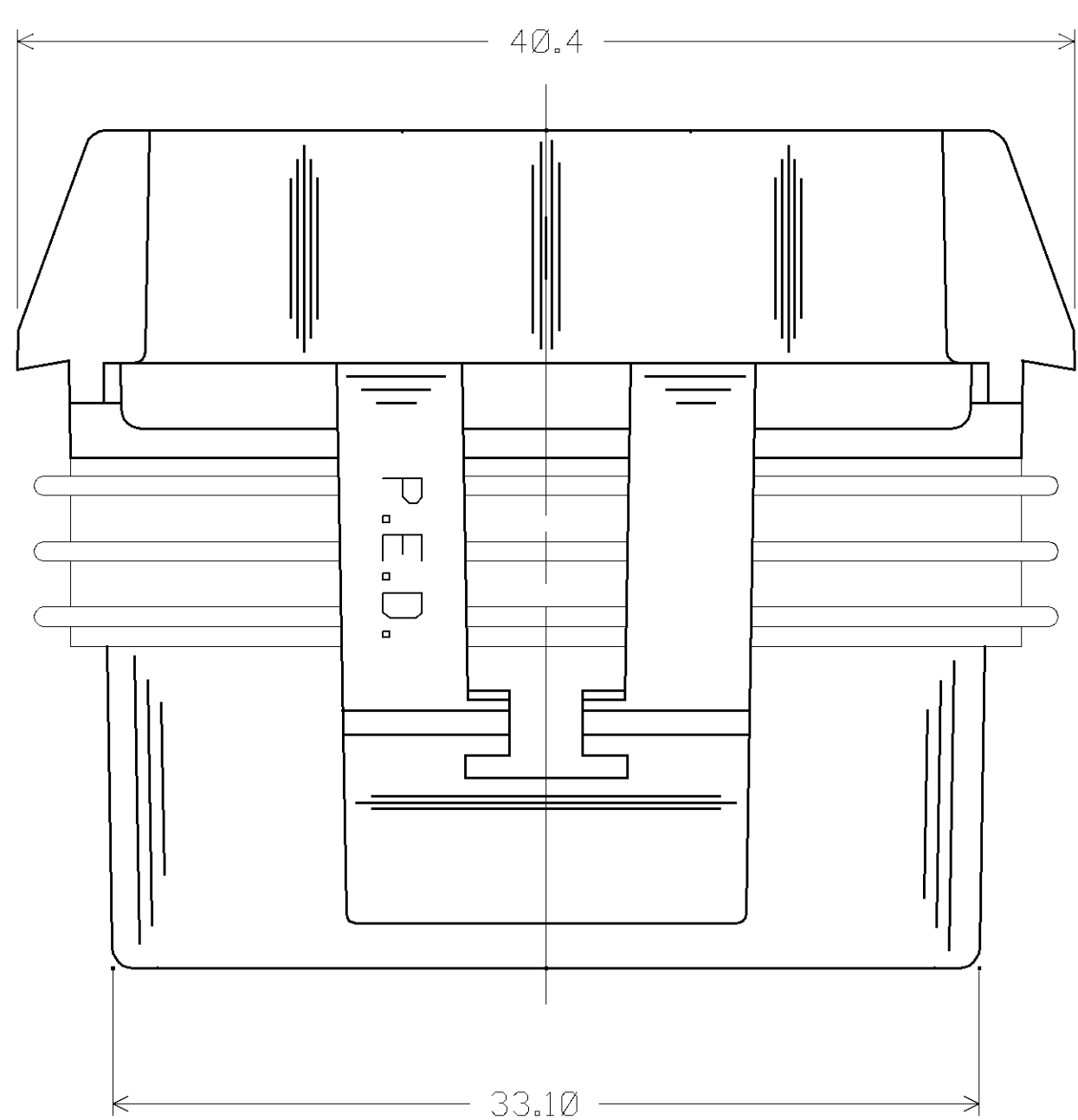
0.50 TYP-2 PLCS → ← 1.1
(.020) 0.5 -2 PLCS
(.04)



NOTE ————— TERMINALS ARE IDENTICAL, EXCEPT AS SHOWN.

MATERIAL ————— RECOMMENDED MATERIAL IS P-1546 (CA 210) - EXTRA
SPRING TEMPER - TIN PLATED BRASS
PLATING THICKNESS: 0.003 - 0.005 MM (.0001-.0002 IN.)
TENSILE STRENGTH: 430 - 480 MPa

OPTIONAL MATERIAL ————— P1519 (CA 425) EXTRA HARD TIN BRASS - TIN PLATED
PLATING THICKNESS: 0.003 - 0.005 MM (.0001-.0002 IN.)
TENSILE STRENGTH: 540-630 MPa

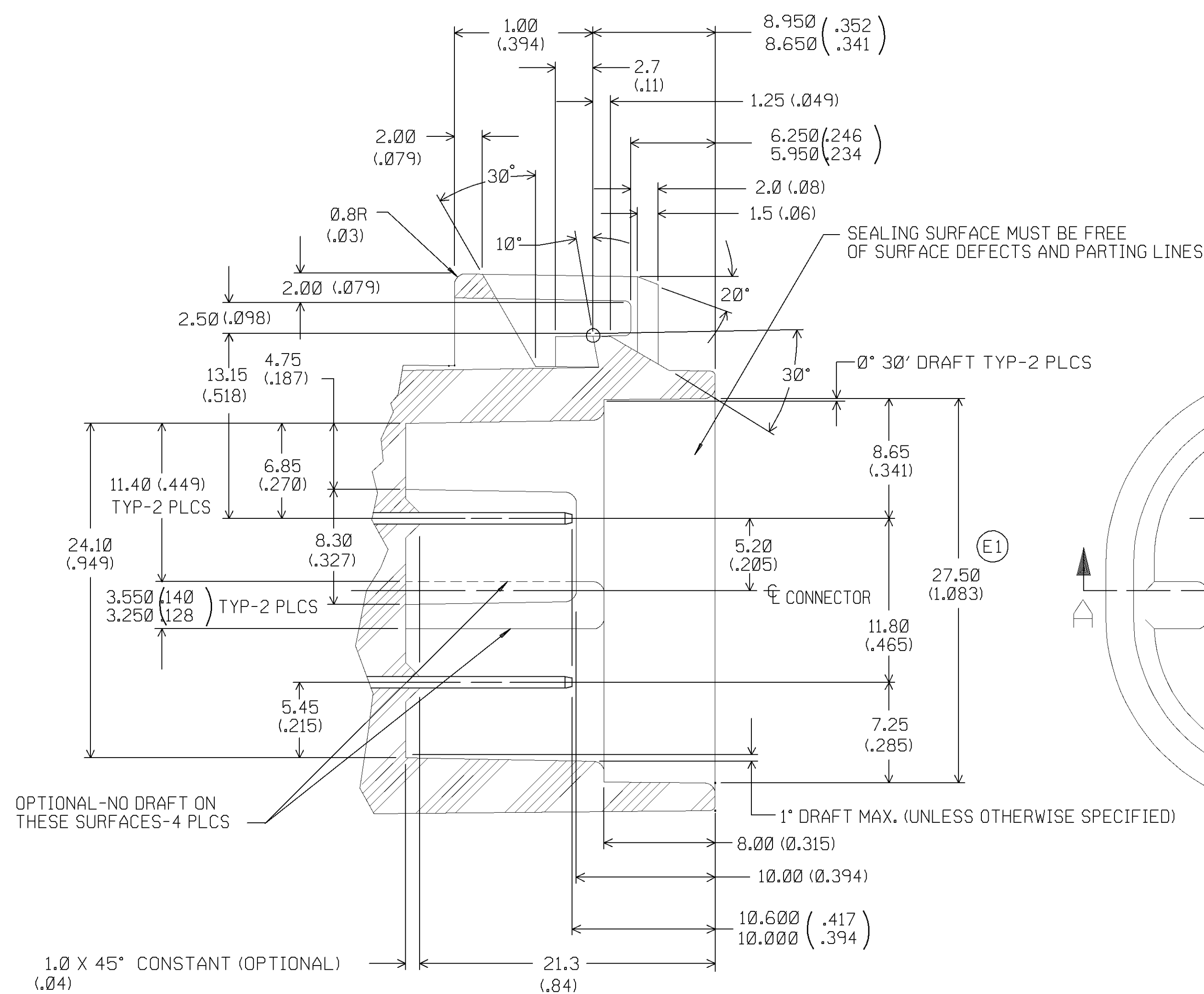


MATING CONNECTOR

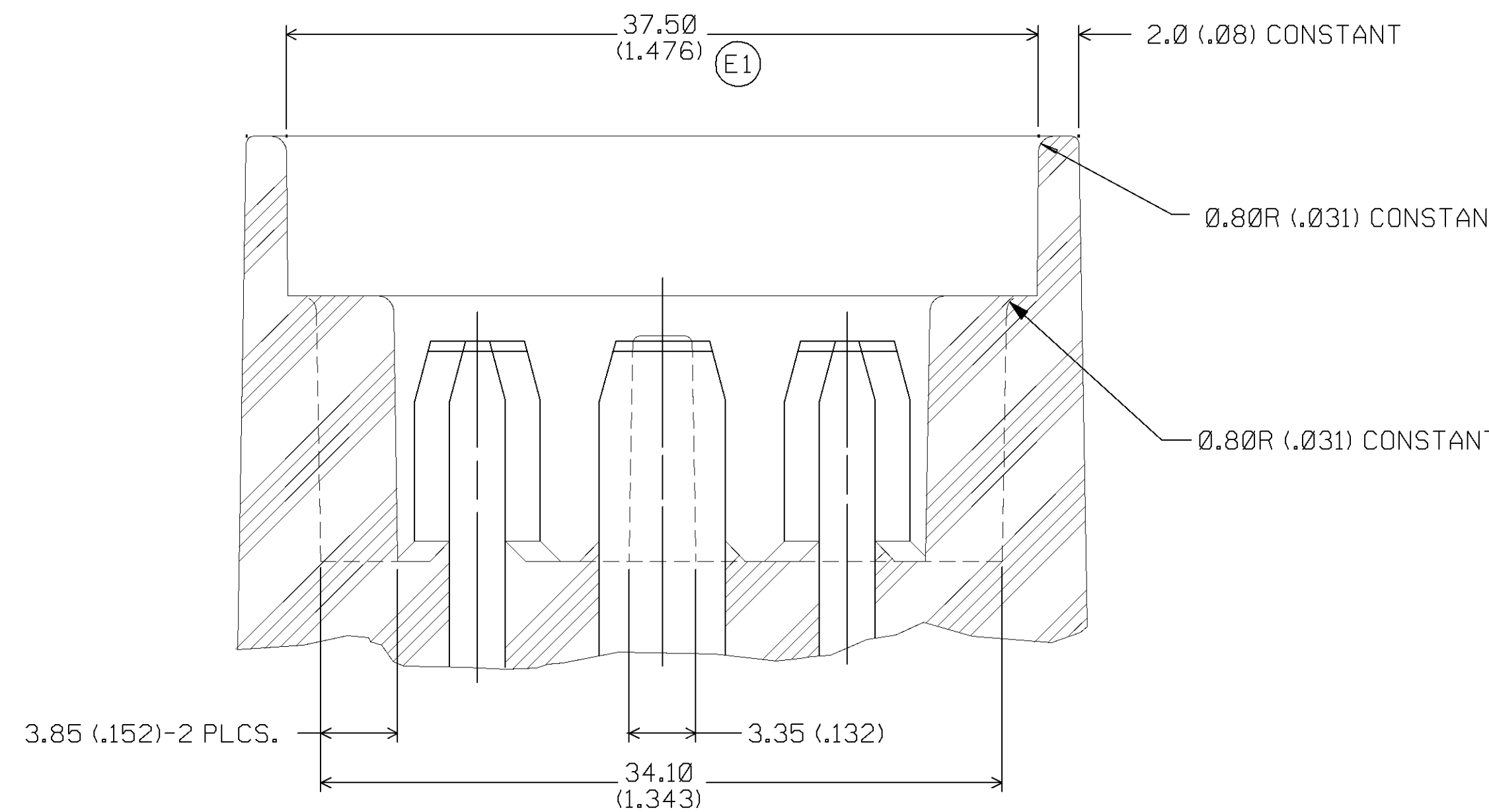
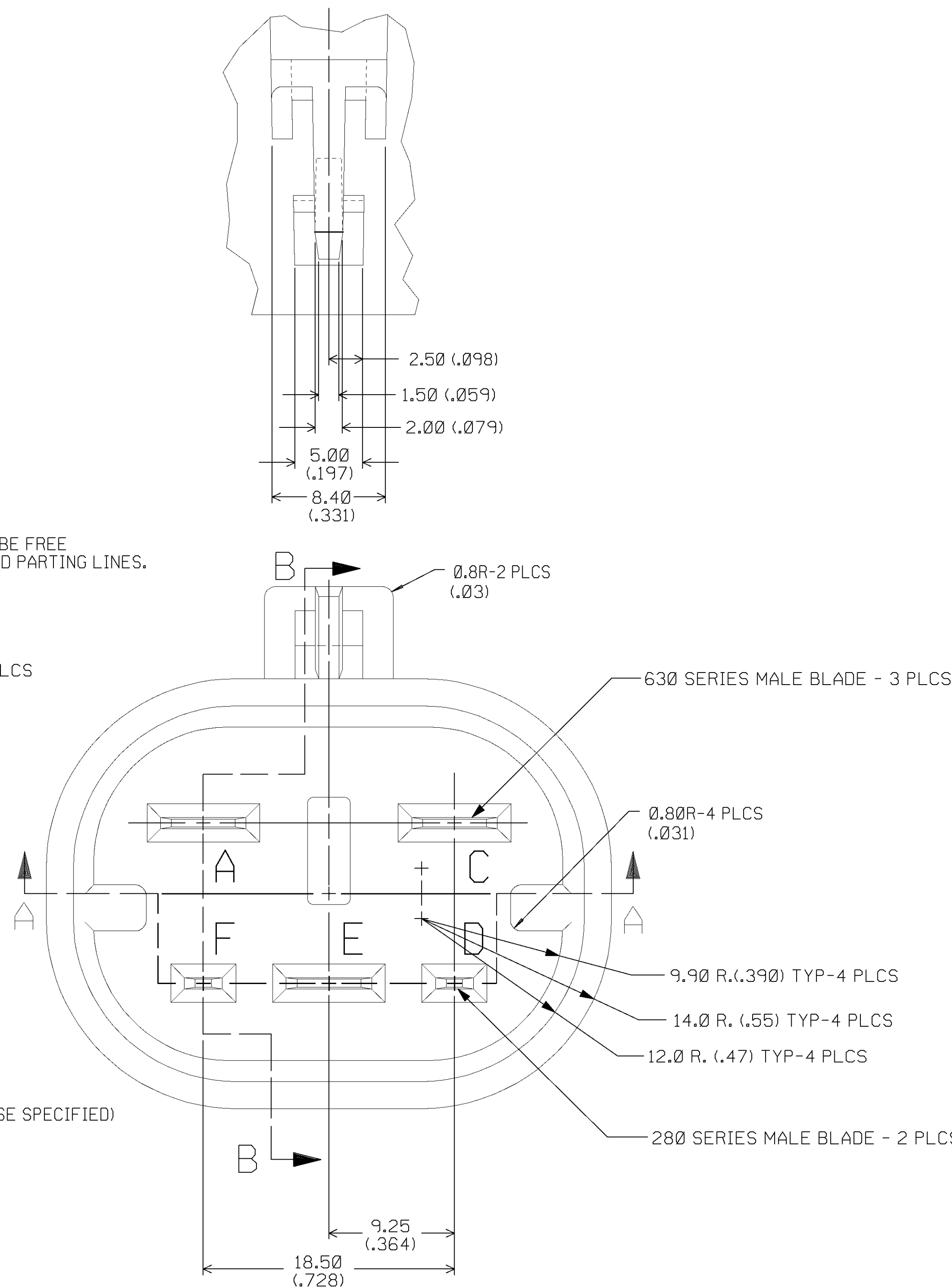
PART NO. 1205 2287

(SCALE 4:1)

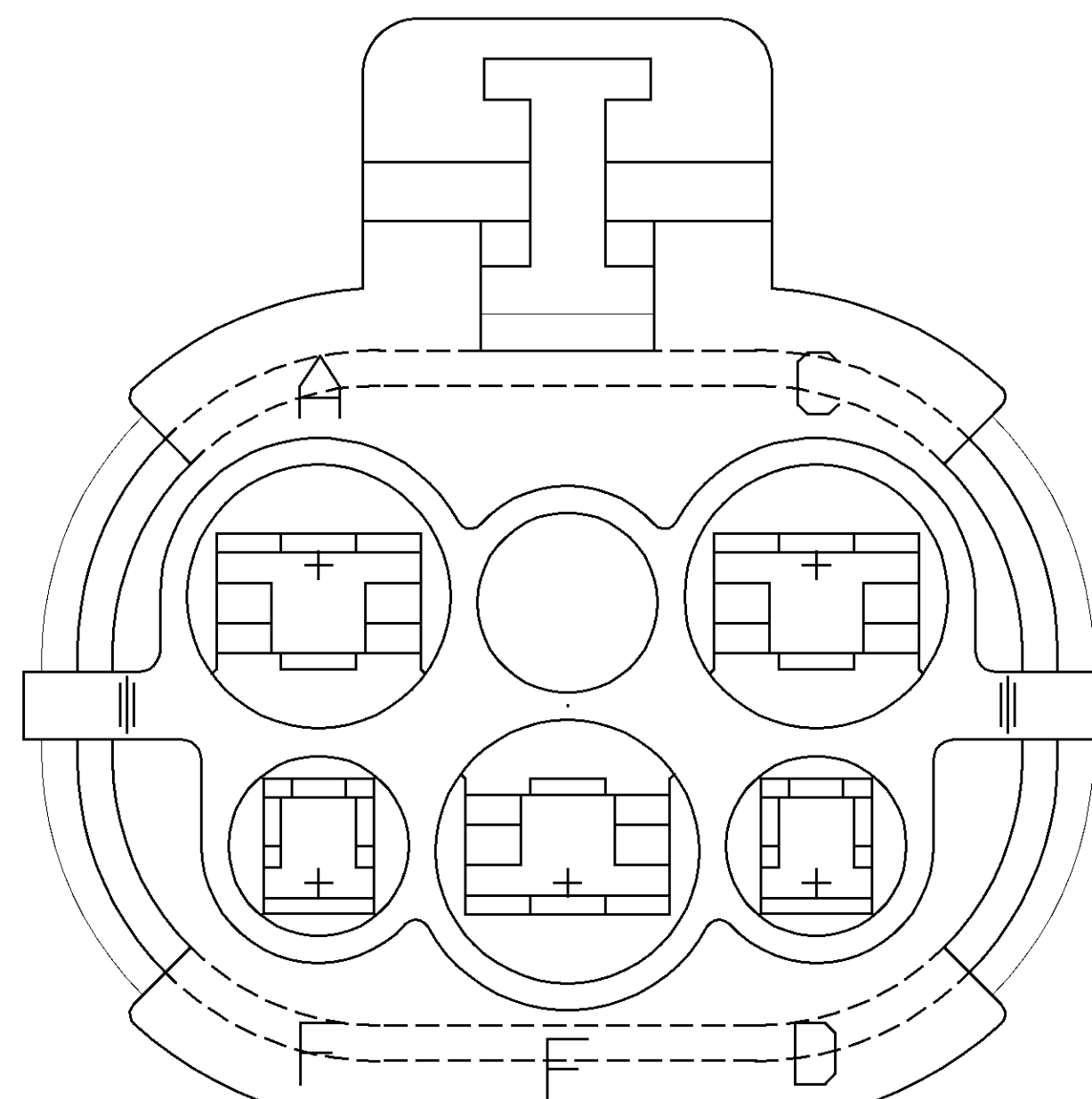
RECOMMENDED MATERIAL - NYLON OR POLYESTER - 30% GLASS FILLED



SECTION B-E



SECTION A-A


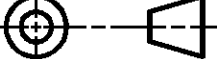


PATENT PENDING

[illegible]

PART NO. 1205 2287

PART NO. 1205 2287

<h1 style="text-align: center;">ENGLISH DIMENSIONS ARE IN ()</h1>			
		FILE SPEC CONSTRUCTION/CONNECTION STANDARD/TYPE	
THIRD ANGLE PROJECTION 		<h2 style="text-align: center;">METRIC</h2> <p style="text-align: center;">DIMENSIONS ARE IN MILLIMETERS</p>	
CODE NO. 6900		TOLERANCE UNLESS OTHERWISE SPECIFIED DECIMALS: 0.1 (0.004) 0.05 (0.002) 0.025 (0.001) TWO PLACES: 0.3 (0.012) 0.15 (0.006) 0.075 (0.003)	
DWG. DATE 01JUN84		SCALE 1/8"=1"	
EST. NO.		DR. E. HESTON DATE 14MR85	
REFERENCE NO. 1205-2888 "E" SIZE		APPR. M. CONWAY DATE 15MR85 J. M. CHUPAK DATE 15MR85	
MATERIAL SPEC.			
SEE DRAWING			
ASM CONN 5F M/P MXD			
PART NO.		SIZE	
<h1>1205 2287</h1>		<h1>E</h1>	

Mouser Electronics

Authorized Distributor

Click to View Pricing, Inventory, Delivery & Lifecycle Information:

[Delphi Connection Systems:](#)

[12052287-B](#)