

**Ordering number CP11956_EYA-S**

Family	Eya	FWHM	7 degrees
Type	Assembly	Efficiency	-
LED	Platinum Dragon	cd/lm	-
Color	Black	Gerber File	Available
Diameter	30.4 mm		
Height	29.1 mm		
Style	Round		
Optic Material	PMMA		
Holder Material	PC		
Fastening	Pin, glue		
Status	On production		

**Ordering number CP11337_EYA-O**

Family	Eya	FWHM	8+34 degrees
Type	Assembly	Efficiency	-
LED	Platinum Dragon	cd/lm	-
Color	Black	Gerber File	Available
Diameter	30.4 mm		
Height	29.1 mm		
Style	Round		
Optic Material	PMMA		
Holder Material	PC		
Fastening	Pin, glue		
Status	On production		

NOTE: The typical divergence will be changed by different color, chip size and chip position tolerance. The typical total divergence is the full angle measured where the luminous intensity is half of the peak value.



PRODUCT DATASHEET

Eya series

last update 14/11/2012



GENERAL INFORMATION

- Product series especially designed & optimized for Platinum Dragon series of LEDs.
- Special care taken to make light distribution as uniform as possible.
- Lens material optical grade PMMA with high UV and temperature resistance. Allows use of high current and temperature conditions.

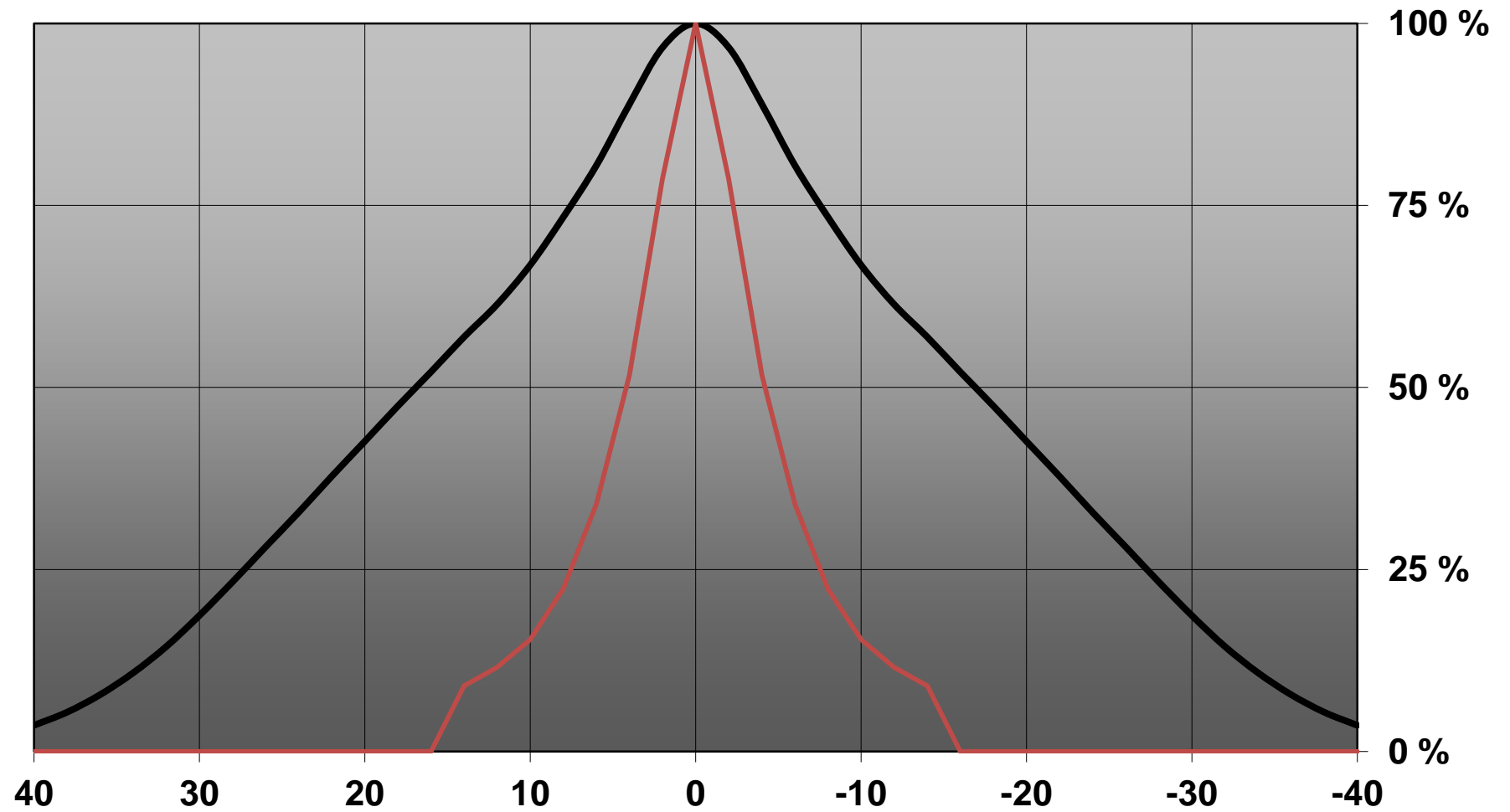
Please find more information about used material from below:

http://ledil.fi/sites/default/files/Documents/Technical/Material/PMMA%20N%20UL94_Yellow%20Card.pdf

<http://ledil.fi/sites/default/files/Documents/Technical/Material/PMMA%20N%20PLEXIGLAS-Datasheet.pdf>

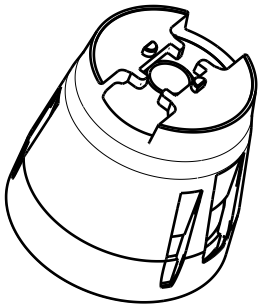
- Optic holder molded by high quality PC material (120 degrees of Celcius / 248 degrees of Fahrenheit).

Relative intensity of CA11337_Eya-O

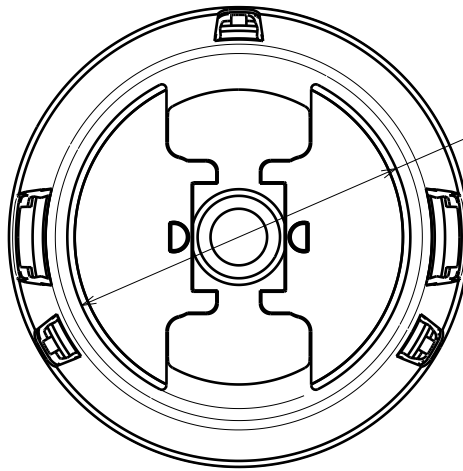


D C B A

4



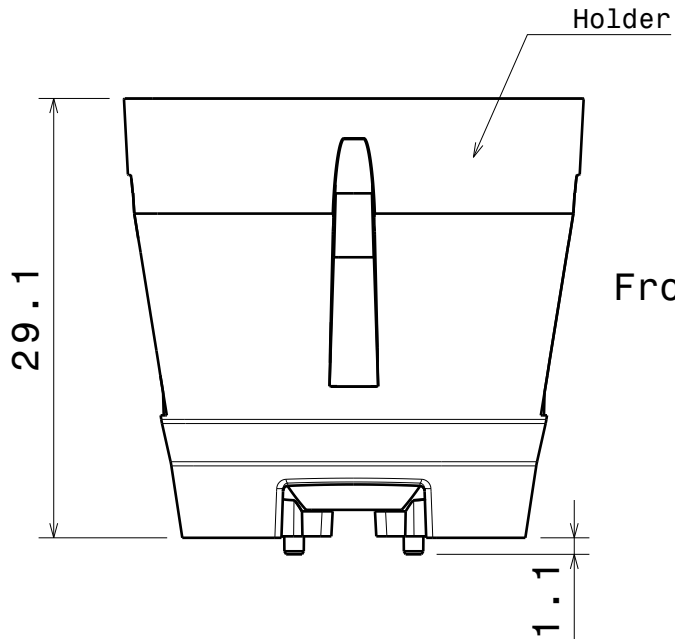
Isometric view



$\phi 22.7$

Bottom view

3

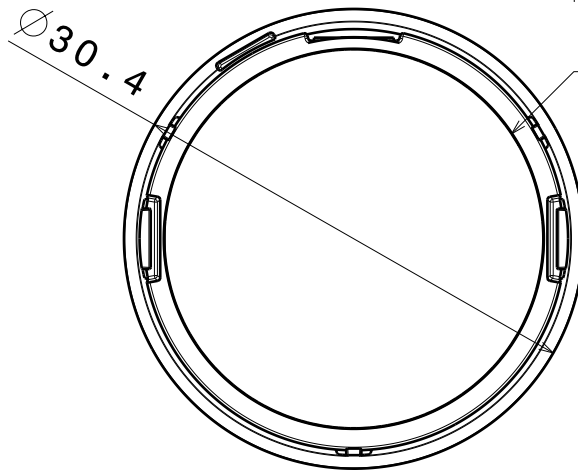


Front view

2

Part no.s:
CA11337_Eya-0
CA11956_Eya-S

Materials:
Lens PMMA
Holder PC, Black



Top view

This drawing is our property.
It can't be reproduced
or communicated without
our written agreement.



L
T
F
F

e
e
l
i

N
n

d
h

1

DRAWN BY p v		DATE 29.03.2011		DRAWING TITLE Datasheet Eya series assy			
CHECKED BY p		DATE 29.03.2011		SIZE A4	DRAWING NUMBER -		REV 1.0
DESIGNED BY pv		DATE 17.02.2011		SCALE 2:1	WEIGHT (g)		SHEET 1/1

D A