

PacketClock™ Spread Spectrum Clock Generator

Features

- Integrated phase-locked loop (PLL)
- Low jitter, high-accuracy outputs
- 3.3 V operation
- 25 MHz input frequency
- 33.33 MHz or 25 MHz selectable output frequency (-21)

Benefits

- High-performance PLL tailored for spread spectrum application
- Meets critical timing requirements in complex system designs
- Enables application compatibility
- Works with commonly available crystal or driven reference
- Downspread spread spectrum with 30 kHz nominal modulation frequency

Functional Description

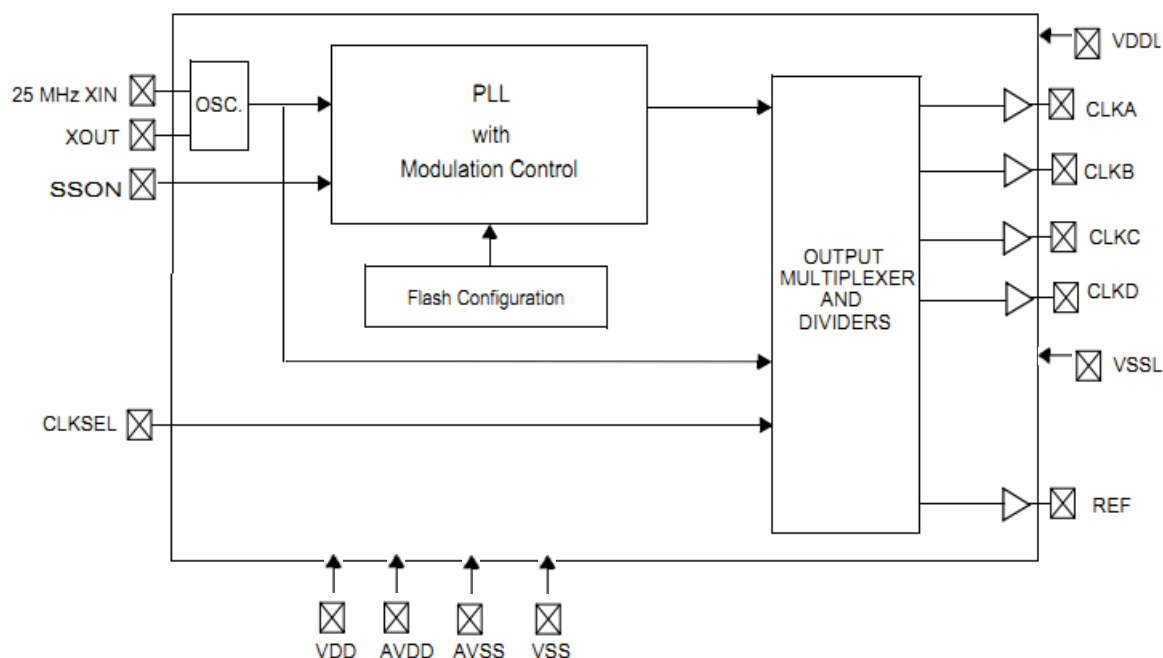
For a complete list of related resources, [click here](#).

Frequency Table

for CLKA-D

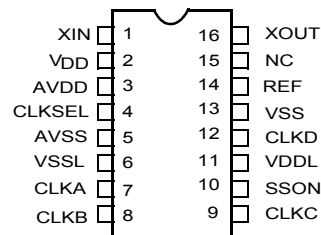
Part Number	CLKSEL = 0	CLKSEL = 1	Spread%	Parallel Crystal Load
CY26121-21	33.33 MHz	25.00	-2.8%	15 pF

Logic Block Diagram



Pin Configuration

Figure 1. 16-pin TSSOP pinout



Pin Definitions

Pin Name	Pin Number	Description
XIN	1	Reference input Or crystal input
VDD	2	3.3 V voltage supply
AVDD	3	3.3 V analog voltage
CLKSEL	4 (-21)	0 = 33.33 MHz out, 1 = 25 MHz Out. Weak pull-up.
AVSS	5	Analog ground
VSSL	6	CLK ground
CLK(A:D)	7, 8, 9, 12	Clock outputs at V _D DL level
SSON	10	Spread spectrum enable pin 0 = SS off; 1 = SS on. Weak pull-up.
VDDL	11	3.3 V clock voltage supply
VSS	13	Ground
REF	14	Reference output at V _D D level
NC	15	No connect
XOUT ^[1]	16	Crystal output

Notes

1. Float XOUT if XIN is externally driven.

Maximum Ratings

Exceeding maximum ratings may impair the useful life of the device. These user guidelines are not tested.

Supply voltage (V_{DD} , AV_{DD} , V_{DDL}) -0.5 to +7.0 V

DC input voltage -0.5 V to $V_{DD} + 0.5$ V

Storage temperature

(Non-condensing) -55 °C to +125 °C

Junction temperature -40 °C to +125 °C

Data retention at $T_j = 125$ °C > 10 years

Package power dissipation 350 mW

Static discharge voltage

(per MIL-STD-883, Method 3015) ≥ 2000 V

Recommended Operating Conditions

Parameter	Description	Min	Typ	Max	Unit
V_{DD} , AV_{DD}	Supply voltage	3.135	3.30	3.465	V
V_{DDL}	Supply voltage for CLK (A-D)	3.135	3.30	3.465	V
T_A	Ambient temperature (industrial temp grade)	-40	–	85	°C
C_{LOAD}	Max. output load capacitance	–	–	15	pF
F_{ref}	Reference frequency	–	25	–	MHz

Crystal Specification

Parameter ^[2]	Description	Min	Typ	Max	Unit
CR_{load}	Crystal load capacitance (-21)	–	15	–	pF
ESR	Equivalent series resistance	–	–	50	Ω

DC Electrical Specifications

Parameter	Description	Condition	Min	Typ	Max	Unit
I_{OH}	Output high current	$V_{OH} = V_{DD} - 0.5$ V, $V_{DD}/V_{DDL} = 3.3$ V	12	24	–	mA
I_{OL}	Output low current	$V_{OL} = 0.5$ V, $V_{DD}/V_{DDL} = 3.3$ V	12	24	–	mA
I_{IH}	Input high current	$V_{IH} = V_{DD}$	–	5	10	μ A
I_{IL}	Input low current	$V_{IL} = 0$ V	–	–	50	μ A
V_{IH}	Input high voltage	CMOS levels	$0.7 \times V_{DD}$	–	–	V
V_{IL}	Input low voltage	CMOS levels	–	–	$0.3 \times V_{DD}$	V
C_{IN} ^[3]	Input capacitance	Input pins excluding XIN	–	–	7	pF
R_{UP} ^[3]	Pull-up resistor on input pins	$V_{DD} = 3.14$ to 3.47 V, measured at $V_{IN} = 0$ V	80	100	150	k Ω
I_{DD}	Supply current	$AV_{DD}/V_{DD}/V_{DDL}$ Current.	–	42	60	mA

Thermal Resistance

Parameter ^[3]	Description	Test Conditions	16-pin TSSOP	Unit
θ_{JA}	Thermal resistance (junction to ambient)	Test conditions follow standard test methods and procedures for measuring thermal impedance, in accordance with EIA/JESD51.	90	°C/W
θ_{JC}	Thermal resistance (junction to case)		14	°C/W

Notes

2. A fundamental parallel resonant crystal must be used.
3. Guaranteed by Characterization, not 100% tested.
3. These parameters are guaranteed by design and are not tested.

AC Electrical Specifications

Parameter ^[4]	Description	Condition	Min	Typ	Max	Unit
DC	Output duty cycle	Duty Cycle is defined in Figure 2, 50% of V_{DD}	45	50	55	%
ER	Rising edge rate	Output clock edge rate, measured from 20% to 80% of V_{DD} , $C_{LOAD} = 15$ pF. See Figure 3.	0.8	1.4	–	V/ns
EF	Falling edge rate	Output clock edge rate, measured from 80% to 20% of V_{DD} , $C_{LOAD} = 15$ pF. See Figure 3.	0.8	1.4	–	V/ns
tj	RMS clock cycle-to-cycle Jitter	RMS cycle-to-cycle jitter with spread on. Measured at $V_{DD}/2$.	–	15	40	ps

Voltage and Timing Definitions

Figure 2. Duty Cycle Definition

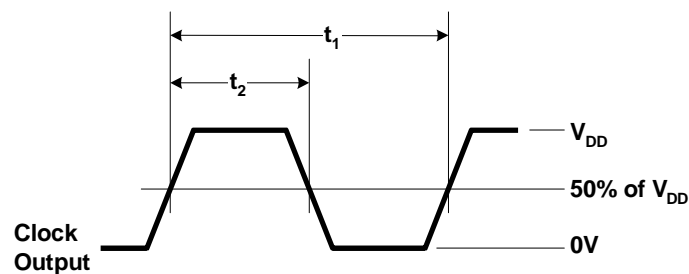
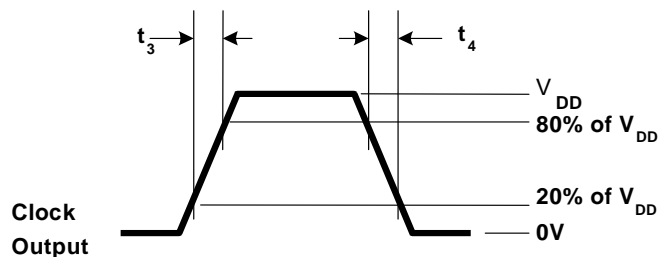


Figure 3. $ER = (0.6 \times V_{DD}) / t_3$, $EF = (0.6 \times V_{DD}) / t_4$



Notes

4. Guaranteed by Characterization, not 100% tested.

Ordering Information

Ordering Code	Package Type	Operating Range
CY26121KZXI-21	16-pin TSSOP	Industrial, –40 °C to 85 °C
CY26121KZXI-21T	16-pin TSSOP – Tape and Reel	Industrial, –40 °C to 85 °C

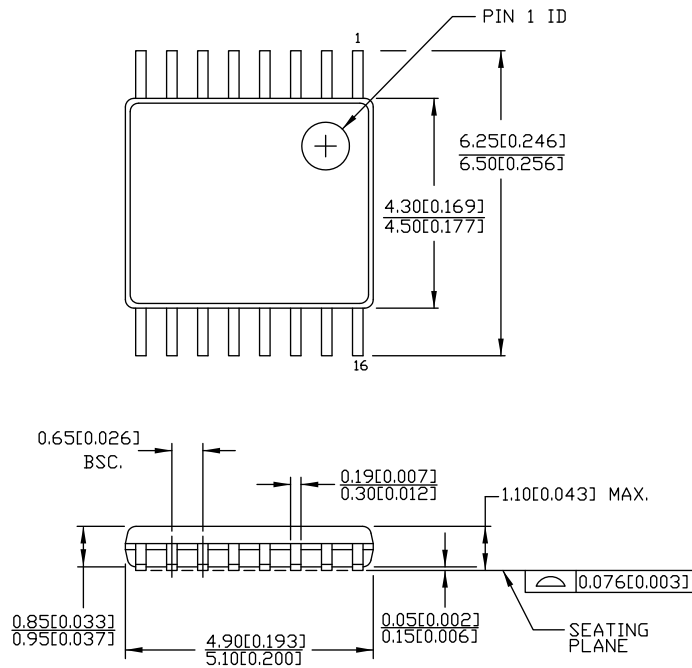
Ordering Code Definitions

CY **26121** **K** **Z** **X** **I** **-21** **T**

- T = Tape and Reel, Blank = Tube Fixed
- Temperature range
- I = Industrial
- X = Pb-free
- 16 Pin TSSOP
- Indicates Foundry Manufacturing
- Base part Number
- Company ID: CY = CYPRESS

Package Drawing and Dimensions

Figure 4. 16-pin TSSOP (4.40 mm Body) Z16.173/ZZ16.173 Package Outline, 51-85091

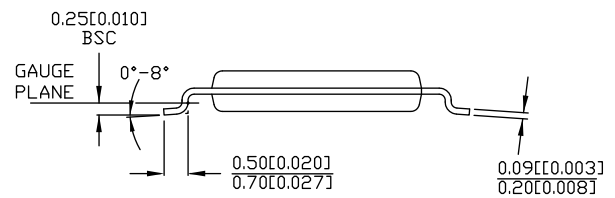


DIMENSIONS IN MM[INCHES] MIN.
MAX.

REFERENCE JEDEC MO-153

PACKAGE WEIGHT 0.05gms

PART #	
Z16.173	STANDARD PKG.
ZZ16.173	LEAD FREE PKG.



51-85091 *E

Acronyms

Table 1. Acronyms Used in this Document

Acronym	Description
ESR	Equivalent Series Resistance
PLL	Phase-Locked Loop
TSSOP	Thin-Shrunk Small Outline Package

Document Conventions

Units of Measure

Table 2. Units of Measure

Symbol	Unit of Measure
°C	degree Celsius
kΩ	kilohm
MHz	megahertz
μA	microampere
mA	milliampere
mW	milliwatt
ns	nanosecond
Ω	ohm
%	percent
pF	picofarad
ps	picosecond
V	volt

Document History Page

Document Title: CY26121, PacketClock™ Spread Spectrum Clock Generator Document Number: 38-07350				
Rev.	ECN No.	Issue Date	Orig. of Change	Description of Change
**	121669	02/11/03	CKN	New data sheet.
*A	2440886	See ECN	KVM / AESA	Updated Ordering Information : Added part numbers CY26121ZXC-21, CY26121ZXC-21T, CY26121ZXI-21, and CY26121ZXI-21T. Added part numbers CY26121KZC-21, CY26121KZC-21T, CY26121KZI-21, and CY26121KZI-21T. Added part numbers CY26121KZXC-21, CY26121KZXC-21T, CY26121KZXI-21, and CY26121KZXI-21T. Removed part numbers CY26121ZI-11, CY26121ZI-11T, CY26121ZI-31 and CY26121ZI-31T. Added Note "Not recommended for new designs." and referred in some MPNs. Updated to new template.
*B	2899683	03/26/10	KVM	Removed reference to -2, -3, -11, -31 parts in all instances across the document. Updated Ordering Information : Removed inactive parts. Removed Note "Not recommended for new designs." and its references. Updated Package Drawing and Dimensions .
*C	3383431	09/26/2011	PURU	Updated Logic Block Diagram. Added Ordering Code Definitions under Ordering Information . Updated Package Drawing and Dimensions . Added Acronyms and Units of Measure .
*D	4556342	10/30/2014	TAVA	Updated Package Drawing and Dimensions : spec 51-85091 – Changed revision from *C to *E. Updated to new template. Completing Sunset Review.
*E	5279177	05/20/2016	PSR	Added Thermal Resistance . Updated to new template.

Sales, Solutions, and Legal Information

Worldwide Sales and Design Support

Cypress maintains a worldwide network of offices, solution centers, manufacturer's representatives, and distributors. To find the office closest to you, visit us at [Cypress Locations](#).

Products

ARM® Cortex® Microcontrollers	cypress.com/arm
Automotive	cypress.com/automotive
Clocks & Buffers	cypress.com/clocks
Interface	cypress.com/interface
Lighting & Power Control	cypress.com/powerpsoc
Memory	cypress.com/memory
PSoC	cypress.com/psoc
Touch Sensing	cypress.com/touch
USB Controllers	cypress.com/usb
Wireless/RF	cypress.com/wireless

PSoC® Solutions

[PSoC 1](#) | [PSoC 3](#) | [PSoC 4](#) | [PSoC 5LP](#)

Cypress Developer Community

[Forums](#) | [Projects](#) | [Video](#) | [Blogs](#) | [Training](#) | [Components](#)

Technical Support

cypress.com/support

© Cypress Semiconductor Corporation, 2003-2016. This document is the property of Cypress Semiconductor Corporation and its subsidiaries, including Spansion LLC ("Cypress"). This document, including any software or firmware included or referenced in this document ("Software"), is owned by Cypress under the intellectual property laws and treaties of the United States and other countries worldwide. Cypress reserves all rights under such laws and treaties and does not, except as specifically stated in this paragraph, grant any license under its patents, copyrights, trademarks, or other intellectual property rights. If the Software is not accompanied by a license agreement and you do not otherwise have a written agreement with Cypress governing the use of the Software, then Cypress hereby grants you a personal, non-exclusive, nontransferable license (without the right to sublicense) (1) under its copyright rights in the Software (a) for Software provided in source code form, to modify and reproduce the Software solely for use with Cypress hardware products, only internally within your organization, and (b) to distribute the Software in binary code form externally to end users (either directly or indirectly through resellers and distributors), solely for use on Cypress hardware product units, and (2) under those claims of Cypress's patents that are infringed by the Software (as provided by Cypress, unmodified) to make, use, distribute, and import the Software solely for use with Cypress hardware products. Any other use, reproduction, modification, translation, or compilation of the Software is prohibited.

TO THE EXTENT PERMITTED BY APPLICABLE LAW, CYPRESS MAKES NO WARRANTY OF ANY KIND, EXPRESS OR IMPLIED, WITH REGARD TO THIS DOCUMENT OR ANY SOFTWARE OR ACCOMPANYING HARDWARE, INCLUDING, BUT NOT LIMITED TO, THE IMPLIED WARRANTIES OF MERCHANTABILITY AND FITNESS FOR A PARTICULAR PURPOSE. To the extent permitted by applicable law, Cypress reserves the right to make changes to this document without further notice. Cypress does not assume any liability arising out of the application or use of any product or circuit described in this document. Any information provided in this document, including any sample design information or programming code, is provided only for reference purposes. It is the responsibility of the user of this document to properly design, program, and test the functionality and safety of any application made of this information and any resulting product. Cypress products are not designed, intended, or authorized for use as critical components in systems designed or intended for the operation of weapons, weapons systems, nuclear installations, life-support devices or systems, other medical devices or systems (including resuscitation equipment and surgical implants), pollution control or hazardous substances management, or other uses where the failure of the device or system could cause personal injury, death, or property damage ("Unintended Uses"). A critical component is any component of a device or system whose failure to perform can be reasonably expected to cause the failure of the device or system, or to affect its safety or effectiveness. Cypress is not liable, in whole or in part, and you shall and hereby do release Cypress from any claim, damage, or other liability arising from or related to all Unintended Uses of Cypress products. You shall indemnify and hold Cypress harmless from and against all claims, costs, damages, and other liabilities, including claims for personal injury or death, arising from or related to any Unintended Uses of Cypress products.

Cypress, the Cypress logo, Spansion, the Spansion logo, and combinations thereof, PSoC, CapSense, EZ-USB, F-RAM, and Traveo are trademarks or registered trademarks of Cypress in the United States and other countries. For a more complete list of Cypress trademarks, visit cypress.com. Other names and brands may be claimed as property of their respective owners.