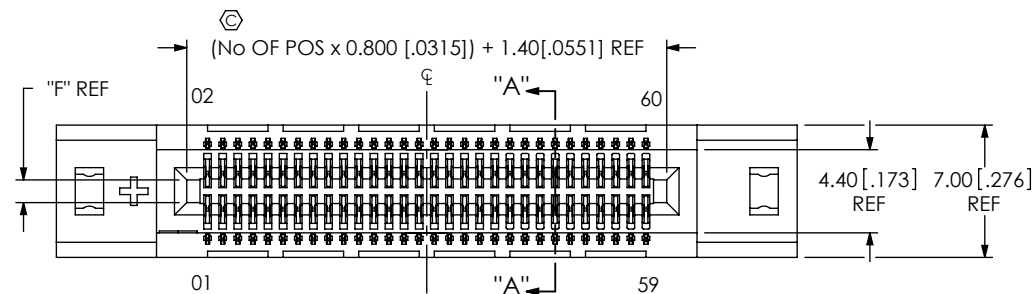


DESIGNED & DIMENSIONED
IN MILLIMETERS
(INCHES FOR REFERENCE ONLY)

DO NOT
SCALE FROM
THIS PRINT



No OF POSITIONS (PER ROW)

-10, -20, -30, -35, -40,
-45, -50, -60, -70

CARD THICKNESS

-01: 1mm (.039) THICK CARD
-02: 1.57mm (.062) THICK CARD

PLATING SPECIFICATION

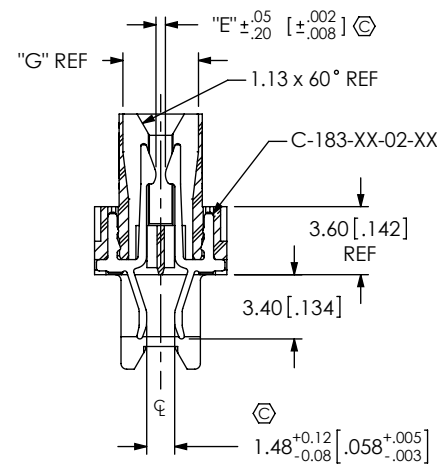
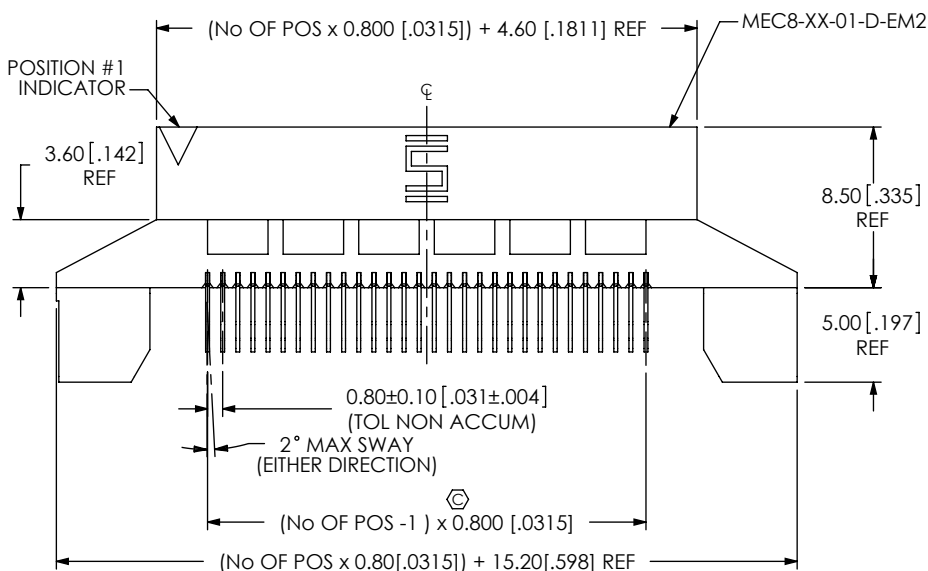
-L: 10μ" SELECTIVE GOLD IN CONTACT
AREA, MATTE TIN ON TAIL
-S: 30μ" SELECTIVE GOLD IN CONTACT
AREA, MATTE TIN ON TAIL
-LM: 10μ" SELECTIVE GOLD IN CONTACT
AREA, MATTE TIN ON TAIL
-SM: 30μ" SELECTIVE GOLD IN CONTACT
AREA, MATTE TIN ON TAIL

TAIL OPTION

-EM2: .062 THICK PCB
(USE MEC8-XX-XX-D-EM2
AND C-183-XX-02-X)

ROW SPECIFICATION

-D: DOUBLE
(USE MEC8-XX-XX-D-EM2)



SECTION "A"- "A"

SECTION "B"- "B"

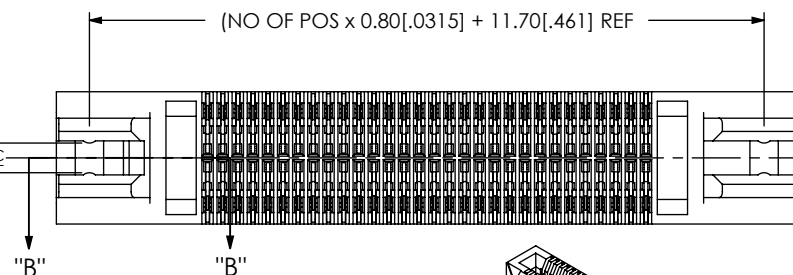
FIG 1

FOR POSITIONS -10, -20, -30 & -35
(SHOWN: MEC8-130-01-X-D-EM2)

TABLE 3

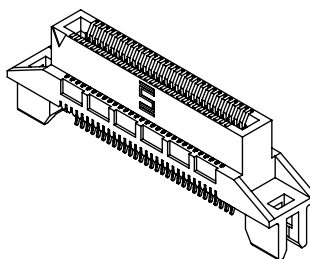
CARD	BODY	CONTACT	"E"	"F"	"G"
-01	MEC8-XX-01-D-EM2	C-183-01-02-XX	.50 [.020]	1.20 [.047]	3.400 [.1339]
-02	MEC8-XX-02-D-EM2	C-183-02-02-XX	1.00 [.039]	1.80 [.071]	4.000 [.1575]

1.57 [.062] REF



NOTES:

1. © REPRESENTS A CRITICAL DIMENSION.
2. BURR ALLOWANCE: 0.04 [.0015] MAX.
3. MINIMUM PUSHOUT FORCE: .5 LB.
4. ALL TAIL TO TAIL DIMENSIONS TO BE MEASURED FROM TIP TO TIP.



UNLESS OTHERWISE SPECIFIED,
DIMENSIONS ARE IN MILLIMETERS
TOLERANCES ARE:

DECIMALS ANGLES
.X: ± .3 [.01]
.XX: ± .13 [.005]
.XXX: ± .051 [.0020]
2°

PROPRIETARY NOTE

THIS DOCUMENT CONTAINS INFORMATION
CONFIDENTIAL AND PROPRIETARY TO
SAMTEC, INC. AND SHALL NOT BE REPRODUCED
OR TRANSFERRED TO OTHER DOCUMENTS OR
DISCLOSED TO OTHERS OR USED FOR ANY
PURPOSE OTHER THAN THAT WHICH IT WAS
OBTAINED WITHOUT THE EXPRESSED WRITTEN
CONSENT OF SAMTEC, INC.

MATERIAL: DO NOT SCALE DRAWING SHEET SCALE: 2.5:1

INSULATOR:
-01: L.C.P., COLOR: NATURAL
-02: L.C.P., COLOR: BLACK
CONTACT: PHOS BRONZE

samtec

520 PARK EAST BLVD, NEW ALBANY, IN 47150
PHONE: 812-944-6733 FAX: 812-948-5047
e-Mail: info@SAMTEC.com code: 55322

DESCRIPTION:
0.8mm DUAL EDGE MOUNT MINI-EDGE CARD ASSEMBLY

DWG. NO.
MEC8-1XX-XX-XX-D-EMX

BY: CHAD F 04/09/2002 SHEET 1 OF 2

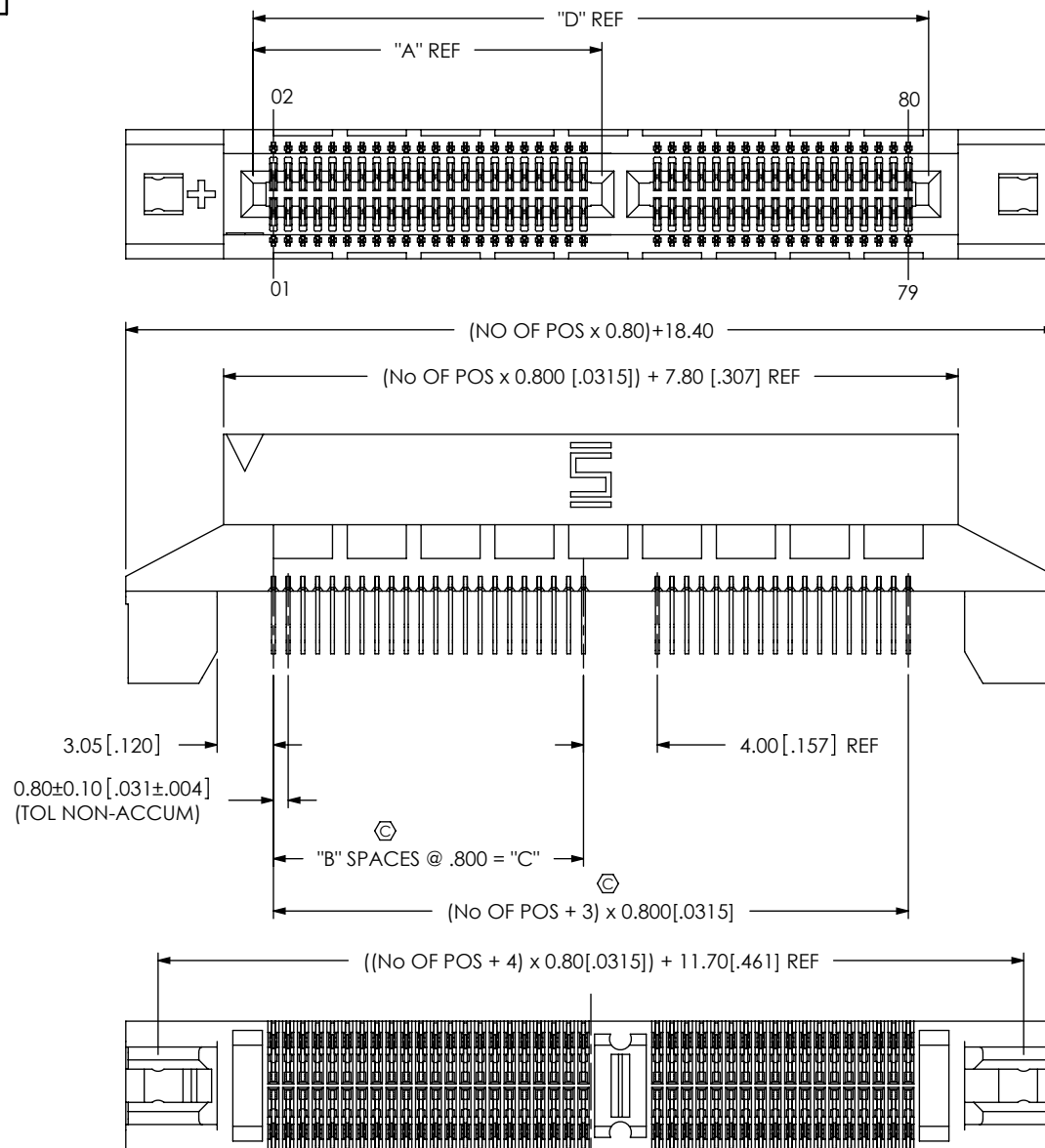


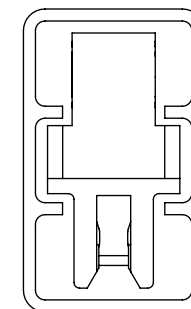
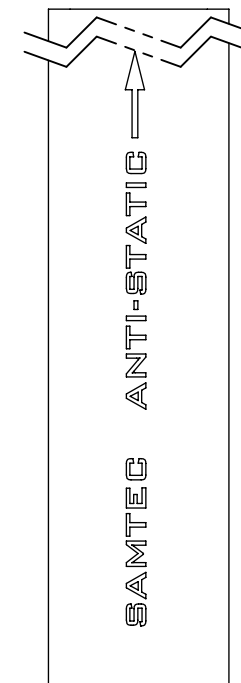
FIG 2

FOR POSITIONS -40 THRU 70
(SAME AS FIG 1, UNLESS OTHERWISE STATED)
(SHOWN: MEC8-140-01-X-D-EM2-A)

TABLE 2				
No OF POS	"A" REF	"B"	"C"	"D" REF
-40	18.90[.744]	21	16.800[.661]	36.60[1.441]
-45	20.50[.807]	23	18.400[.724]	40.60[1.598]
-50	22.90[.902]	26	20.800[.8189]	44.60[1.756]
-60	26.90[1.059]	31	24.800[.9764]	52.60[2.071]
-70	30.90[1.217]	36	28.800[1.1339]	60.60[2.386]

PACKAGING VIEW

(PARTS TO HAVE POSITION #1 LOADED IN
SAME DIRECTION AS ARROW ON TUBE)



TUBE: PT-1-24-02-125
PLUG: TP-03

PROPRIETARY NOTE

THIS DOCUMENT CONTAINS INFORMATION
CONFIDENTIAL AND PROPRIETARY TO
SAMTEC, INC. AND SHALL NOT BE REPRODUCED OR
DISCLOSED TO OTHERS OR USED FOR ANY
PURPOSE OTHER THAN THAT WHICH IT WAS
OBTAINED WITHOUT THE EXPRESSED WRITTEN
CONSENT OF SAMTEC, INC.

DO NOT SCALE DRAWING

SHEET SCALE: 2.5:1

samtec

520 PARK EAST BLVD, NEW ALBANY, IN 47150
PHONE: 812-944-6733 FAX: 812-948-5047
e-Mail: info@SAMTEC.com code: 55322

DESCRIPTION:
0.8mm DUAL EDGE MOUNT MINI-EDGE CARD ASSEMBLY

DWG. NO.
MEC8-1XX-XX-XX-D-EMX

BY: CHAD F 04/09/2002 SHEET 2 OF 2