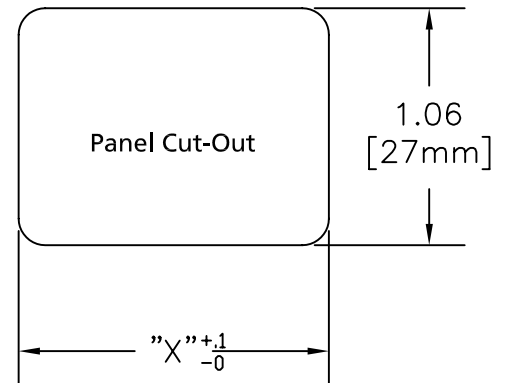
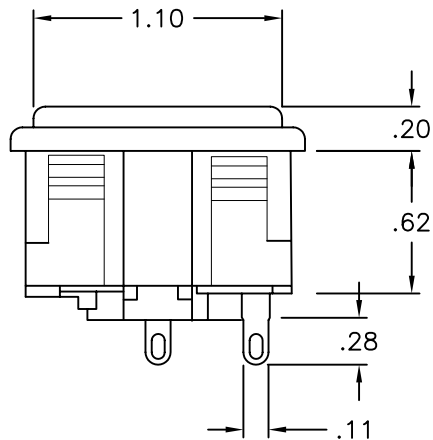
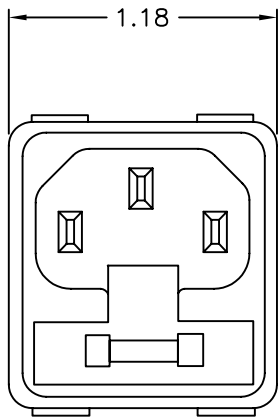


DCP #	REV	DESCRIPTION	DRAWN	DATE	CHECKD	DATE	APPRVD	DATE
162	A	RELEASED	JWM	1/27/98	JC	2/4/98	BB	2/5/98
1780	B	RoHS added	DCM	10/25/05	JWM	10/26/05	JWM	10/26/05



Panel Thickness
.032 - .047 ["X"=1.236]
.051 - .079 ["X"=1.244]

Material:

Housing: Thermoplastic

Terminal: Copper Alloy

Characteristics:

Rating: 10A 250VAC

Insulation Resistance: Over 100 Ohm 500 VDC

Dielectric Strength: 2000VAC One Minute

Fuse: Ø5 x 20mm 250VAC 6.3A Max.

Approvals:

UL, CSA, VDE, SEV, CB, SEMKO, DEMKO, NEMKO, and SETI

NOTE: Dual Fuseholder, one active, one spare.

Fuses not included - Recommended Size: 5 x 20mm

SPC-F004.DWG

TOLERANCES: UNLESS OTHERWISE SPECIFIED, DIMENSIONS ARE FOR REFERENCE PURPOSES ONLY.	DRAWN BY:	DATE:	DRAWING TITLE:			
	Jeff McVicker	1/27/98	Power Inlet with Fuseholder IEC 320 - C14			
	CHECKED BY:	DATE:	SIZE	DWG. NO.	ELECTRONIC FILE	REV
	John Cole	2/4/98	A	2151	92N4154.dwg	B
	APPROVED BY:	DATE:	SCALE: NTS		U.O.M.: INCHES [mm]	SHEET: 1 OF 1
	Brett Braatz	2/5/98				