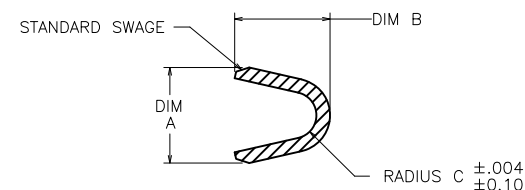
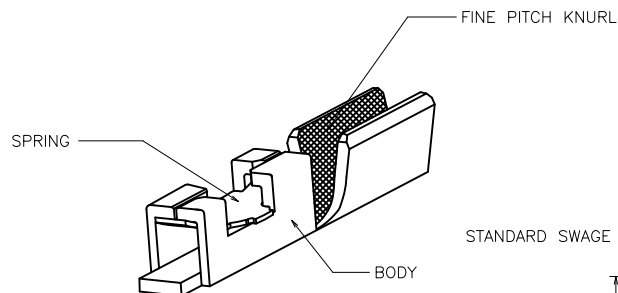
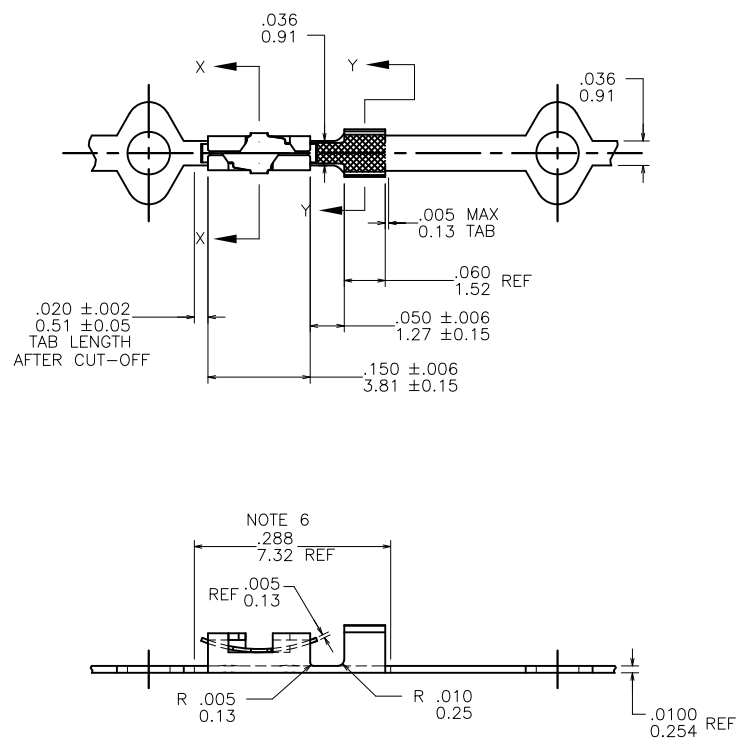
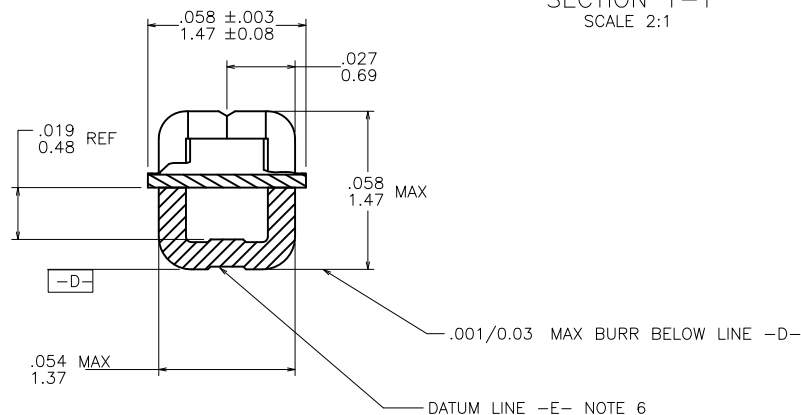


PRODUCT NUMBER  
 SEE TABLE

 SECTION Y-Y  
 SCALE 2:1

 SECTION X-X  
 SCALE 4:1  
 ROTATED 90° CW

mat'l. code				surface	tolerance	projection	product family
SEE NOTE 1							PV TERMINALS
ltr	ecr no	dr	date	tolerances unless otherwise specified		INCH/MM	title
D	V61320	EPK	1996-10-09	angles	$.XX \pm 0.1/XX \pm 3$		
E	V05-0269	VS	2005-04-19		$.XXX \pm 0.05/XXX \pm 13$		
F	V06-0218	HTB	2006-03-07	$0^\circ \pm 2^\circ$	$.XXXX \pm 0.020/XXX \pm 0.51$	scale 4:1	
G	V06-0625	HTB	2006-07-05	dr	L. SANDERS	1994-12-21	
H	V08-0117	HTB	2008-04-09	enfr	T. HANNA	1994-12-21	
J	V08-0520	HTB	2008-12-03	chr	T. BREWBAKER	1994-12-21	
K	V12-0006	HTB	2012-01-05	appd	T. HANNA	1994-12-21	
sheet	revision	K	K				
index	sheet	1	2				

 MINI PV™ RECEPT. C.T.W.  
 SHORT WIRE BARREL SPECIAL

dwg no 91436 sheet 1 of 2 size A4

type CUSTOMER Drawing

PRODUCT NUMBER	WIRE SIZE	WIRE BARREL		
		DIM A	DIM B	RADIUS C
91436-001	O B S O L E T E			
91436-001LF	22-26 AWG	.070/1.78	.070/1.78	.017/0.43
91436-002	O B S O L E T E			
91436-002LF	28-32 AWG	.054/1.37	.058/1.47	.011/0.28
91436-003	O B S O L E T E			
91436-003LF	O B S O L E T E			

## NOTES:

- ①. TERMINAL MATERIAL: 1/4 HARD BRASS  
 TERMINAL PLATING:  
 CONTACT AREA: 30μ"/0.76μ Au OVER 50μ"/1.27μm Ni  
 CONTACT SIDE: 50μ"/1.27μm NICKEL UNDERPLATE OVERALL  
 WITH GOLD FLASH REQUIRED INSIDE CONTACT  
 BOX AND WIRE BARREL ONLY.  
 BACK OF TERMINAL: 30μ"/0.76μm NICKEL ONLY.  
 SPRING MATERIAL: .005/0.13 THICK BeCu HEAT TREATED  
 SPRING PLATING: Au
2. PART TO MATE WITH .025±.002/.640±.050 SQUARE PIN.
3. APPLICABLE SPECIFICATIONS:  
 BUS-12-067: PRODUCT SPECIFICATION.  
 TA-75: CRIMP METHODS FOR USE IN MINI LATCH HOUSING  
 EXCEPT NO BELLMOUTH FRONT OR REAR.
4. PART TO BE LUBRICATED TO FACILITATE CRIMPING.
5. MAX. BURR ANY EDGE .0032/0.081
- ⑥. BOTTOM SURFACE OF TERMINAL SHALL BE STRAIGHT WITHIN  
 .003/0.08 OVER .288/7.32 REF LENGTH AS MEASURED  
 ALONG DATUM LINE -E- ESTABLISHED AT ½ OF .054/1.37 DIA.  
 PERFECT FORM NOT REQUIRED AT MMC.
7. PRODUCT MEETS EUROPEAN UNION DIRECTIVES AND  
 OTHER COUNTRY REGULATIONS AS DESCRIBED IN  
 GS-22-008.
8. THIS PRODUCT IS NOT INTENDED TO BE EXPOSED TO  
 TO MANUFACTURING SOLDERING PROCESSES.

mat'l. code SEE NOTE 1				surface	tolerance	projection	product family PV TERMINALS	
ltr	ecr no	dr	date	tolerances unless otherwise specified			title	
K				angles	XX ±.01/X±3 XXX ±.005/XX±13	INCH/MM	MINI PV™ RECEPT. C.T.W. SHORT WIRE BARREL SPECIAL	
				0° ±2'	XXXX ±.0020/XXX±.051	scale 1:1	dwg no	
				dr	L. SANDERS 1994-12-21		sheet 2 of 2 size	
				engr	T. HANNA 1994-12-21		91436 A4	
				chr	T. BREWBAKER 1994-12-21		type	
				appd	T. HANNA 1994-12-21		CUSTOMER Drawing	
sheet	revision							
index	sheet							