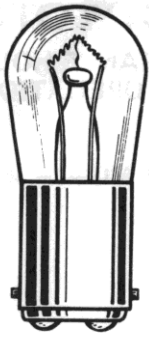



# Large Incandescent Indicators

FOR MOUNTING IN 1" CLEARANCE HOLE  
FOR 24 TO 250V OPERATION



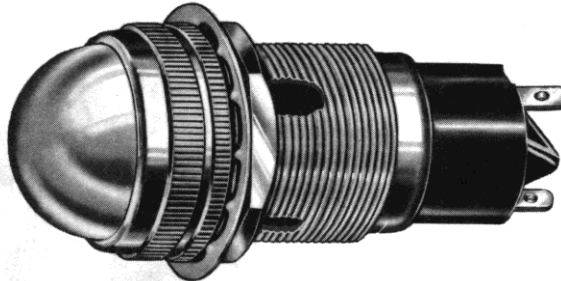
S-6  
DOUBLE CONTACT  
BAYONET BASE

See lamp ratings  
on page K.

Recognized under the component  
program of Underwriters'  
Laboratories Inc.  
75W., 125V.  


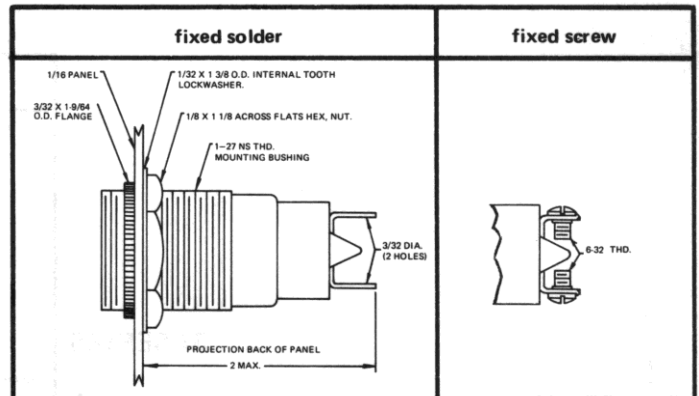
These series indicator lights meet or exceed requirements of MIL-L-3661.

For materials and finishes of products in this group, see page 29D.



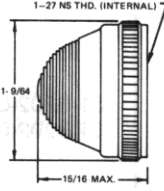
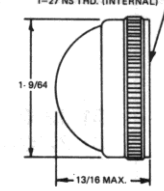
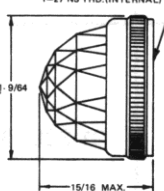
80-3402-1211-301  
Dome lens

## WITH SCREW-ON LENS CAPS



## 80 SERIES

### BASE PART NUMBERS

| CAP PART NUMBERS   |  | COMPLETE ASSEMBLY PART NUMBERS               |  |
|--|--|--|--|
|  <p>1-27 NS THD. (INTERNAL)<br/>1-9/64<br/>15/16 MAX.</p> | <p><b>TORPEDO</b><br/>80-0511-300 back frosted<br/>80-0531-300 unfrosted</p> | <p>80-3402-05-301</p>                        | <p>80-3202-05-301</p>                        |
|  | <p><b>80-0511-300 back frosted</b><br/><b>80-0531-300 unfrosted</b></p>      | <p>80-3402-0511-301<br/>80-3402-0531-301</p> | <p>80-3202-0511-301<br/>80-3202-0531-301</p> |
|  <p>1-27 NS THD. (INTERNAL)<br/>1-9/64<br/>13/16 MAX.</p> | <p><b>80-1211-300 back frosted</b><br/><b>80-1231-300 unfrosted</b></p>      | <p>80-3402-1211-301<br/>80-3402-1231-301</p> | <p>80-3202-1211-301<br/>80-3202-1231-301</p> |
|  | <p><b>80-1211-300 back frosted</b><br/><b>80-1231-300 unfrosted</b></p>      | <p>80-3402-1211-301<br/>80-3402-1231-301</p> | <p>80-3202-1211-301<br/>80-3202-1231-301</p> |
|  <p>1-27 NS THD. (INTERNAL)<br/>1-9/64<br/>15/16 MAX.</p> | <p><b>80-1331-300 unfrosted</b></p>  | <p>80-3402-1331-301</p>                      | <p>80-3202-1331-301</p>                      |
|  | <p><b>80-1331-300 unfrosted</b></p>  | <p>80-3402-1331-301</p>                      | <p>80-3202-1331-301</p>                      |

Part numbers shown in gray are normally  
in inventory at your Dialight Distributor.

Part numbers listed in this catalog designate products with RED lens.  
For ordering lens colors other than red, consult chart on page 2D.