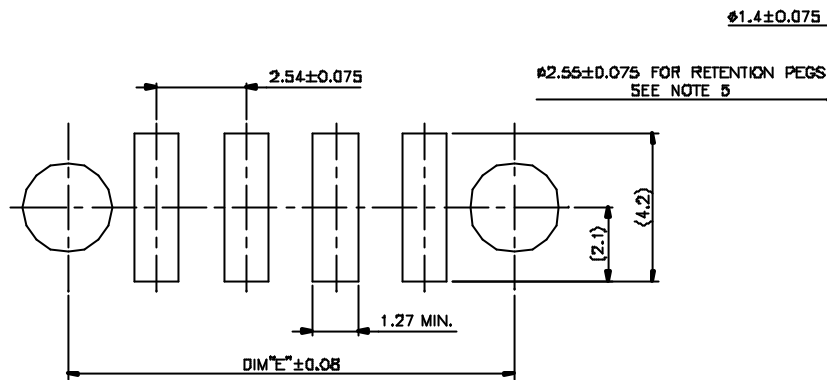
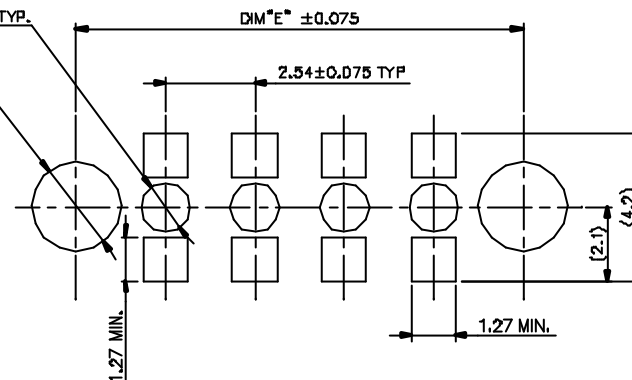


PRODUCT N°	DIM°C°	DIM°D°	DIM°E°
73379-314(Z)	33.02	40.56	38.10

TOP ENTRY LAYOUT



DUAL ENTRY LAYOUT



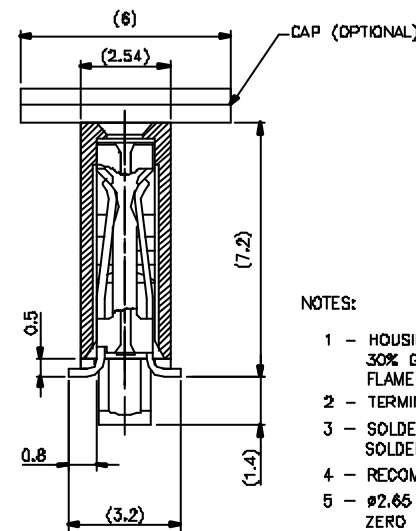
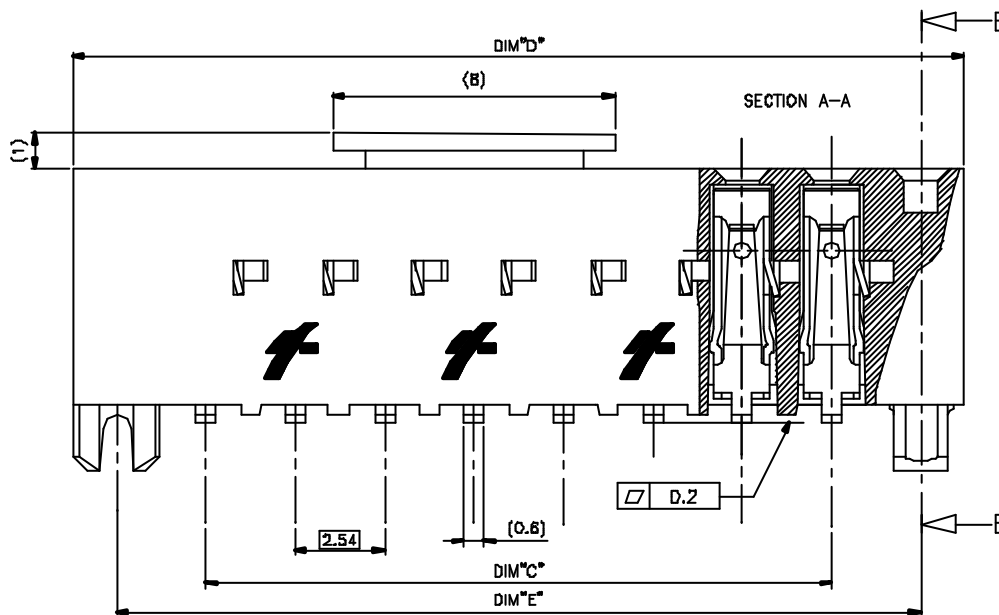
OPTION LETTER	CAP	TUBE	TAPE
73379-314	NO	YES	NO
73379-314B	YES	YES	NO
73379-314A	YES	NO	YES

PACKAGING EXPLANATION

PRODUCT DESCRIPTION CODE

73379-YYXZ

- OPTION LETTER (SEE TABLE)
- NUMBER OF POSITIONS
- PLATING CODE



NOTES:

- HOUSING & CAP MATERIAL: PCT, HIGH TEMPERATURE 30% GLASS FILLED, COLOUR BLACK. FLAME RETARDANT PER UL-94 CATEGORY V0.
- TERMINAL MATERIAL: PHOSPHOR BRONZE EXTRA HARD.
- SOLDERING RECOMMENDATION: SOLDER PASTE: 60Sn/38Pb/2Ag.
- RECOMMENDED IR PROFILE PER TA 842.
- Ø2.65 MIN FOR PICK & PLACE ASSEMBLY ZERO INSERTION FORCE
- FOR TAPE AND REEL DIMENSIONS SEE TA 856.

73379-314(Z)	0.75 µm / 30 µm Au MIN. OVER 0.13 µm / 50 µm Ni MIN.	SnPb OVER Ni
PLATING CODE	CONTACT AREA	SOLDER TAIL
PLATING EXPLANATION		

REF CODE	SEE NOTES 1, 2	TOLERANCES UNLESS OTHERWISE SPECIFIED	CUSTOMER COPY	FILE
A	FINISH	LINEAR	projection	VCC SR SMT
B	FINISH	ANGLES	projection	EXT. LOC. PEGS
C	FINISH	ANGLES	projection	product family: DUBOX RECEPT
D	FINISH	ANGLES	projection	size: 213
E	FINISH	ANGLES	projection	sheet: 1 of 1
F	FINISH	ANGLES	projection	73379