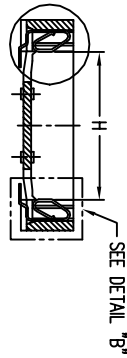
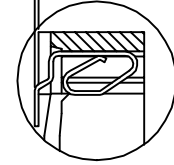
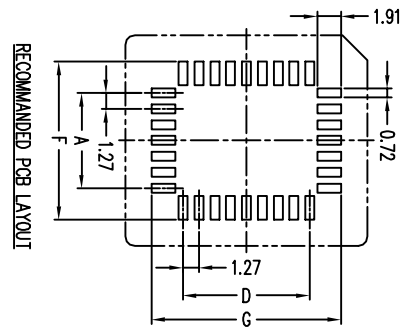
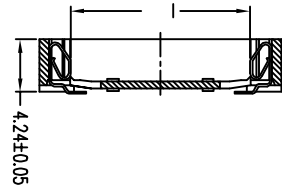
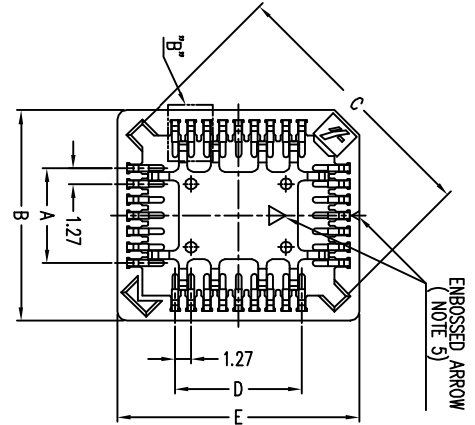
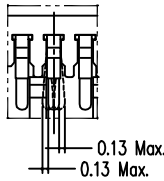


0.23 MAX (NOTE 4)



B DETAIL



NOTE:

1. MATERIAL:
HOUSING: PPS, 40% G.F. FILLED; BROWN, UL94V-0 RATED,
TERMINAL: PHOSPHOR BRONZE, TIN LEAD OR PURE MATTE TIN PLATED.
2. FINISH:
120U" MATTE TIN PLATED OVERALL, 50U" NICKEL UNDERPLATED.
3. RECOMMENDED PCB LAYOUT IS SHOWN IN FIG.1.
4. THE "FCI" LOGO IS LOCATED AS SHOWN.
5. COPLANARITY REQUIREMENT:
A. CONTACT MUST BE BELOW HOUSING BOTTOM SURFACE WITHIN 0.23MM.
B. CONTACT SEATING LINE MUST BE WITHIN 0.102MM.
6. THE POSITION OF PIN#1 IN THE CENTER PAD IS AS SHOWN.
7. MANUFACTURING PROCESS COMPATIBILITY: THE HOUSING WILL WITHSTAND EXPOSURE TO 245 DEG SOLER BATH TEMPERATURE FOR 5 SECOND IN A IR REFLOW APPLICATION.
8. PRODUCT SPECIFICATION: GES-12-054.
9. PACKAGING SPECIFICATION: GS-14-783

ORDERING DATA: 56484- X X X LE

BLANK: PLATING TIN/LEAD
LF: PLATING PURE MATTE TIN
NO OF CONTACTS.
PACKAGING
4. TAPE & REEL

Dim	A	B	C	D	E	F	G	H	I
No of contact	±0.2	±0.2	±0.2	±0.2	±0.2	±0.2	±0.2	±0.2	±0.2
32	7.62	16.89	21.34	10.16	19.43	12.68	15.22	12.03	14.57
44	12.70	21.97	26.70	12.70	21.97	17.76	17.76	17.11	17.11

AP PART NO.	MCK PART NO.	PACKAGING
56484-XXLE	PLCC-XXP-T-SMT-TR-SOD	TAPE & REEL

motl. code				tolerances unless otherwise specified				CUSTOMER COPY				FCI			
lfr	ecn no	dr	date	linear	.XX ± 0.38	.XX ± 0.25	.XX ± 0.20	projection	title	product family	socket	code	sheet	code	sheet
A	T05-0135	WL	6/23/05						MINI PLCC SMT SOCKET						
B	T06-0177	JH	10/24/06	angles	° ± 2				PLCC-XXO-T-SMT-SOD						
				dr	JASON HSU	3/27/01									
				enrg	JASON HSU	3/27/01									
				chr	JASON HSU	3/27/01									
				oppd	JENN TSAO	3/27/01									
sheet	revision	B						scale	1:1	A4	56484		code		
index	sheet	1											sheet		

ACAD

3

code code
22526

4