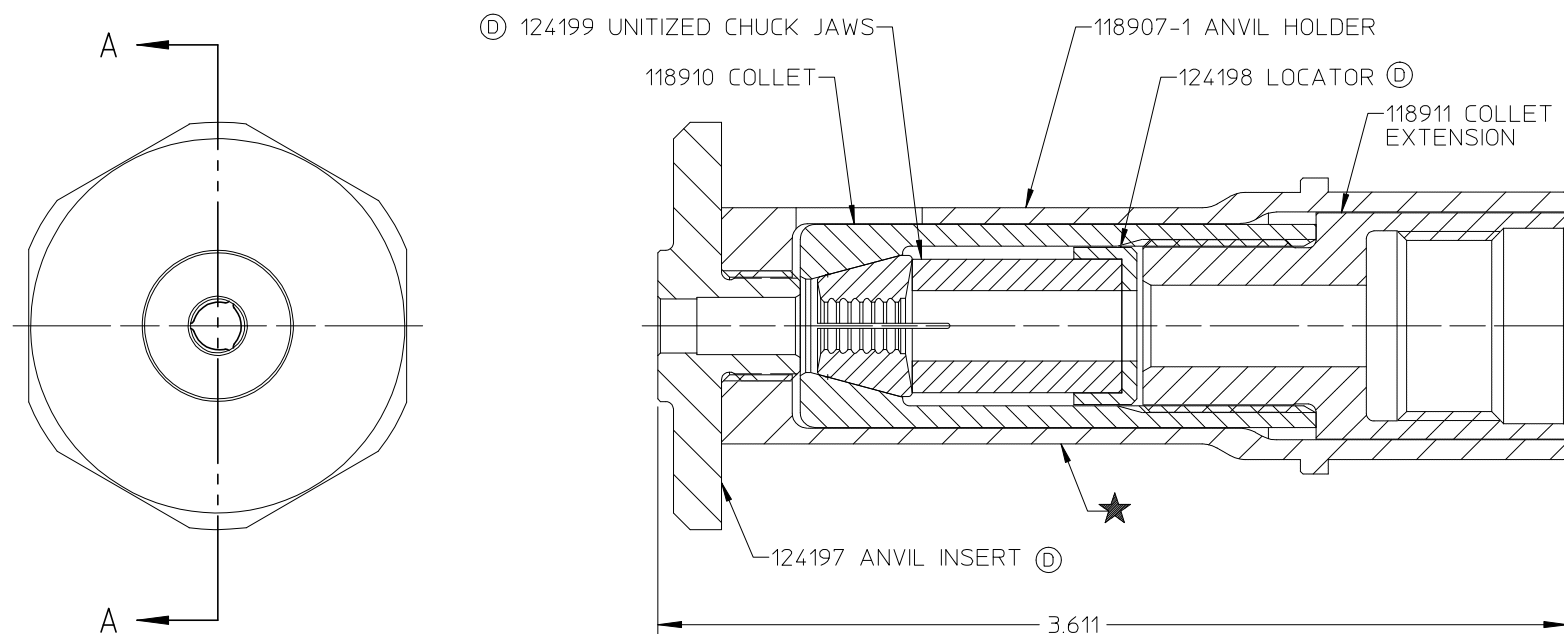


By accepting this proprietary Huck drawing, recipient agrees not to reproduce or disclose any part thereof to any others without the written permission of the Huck Manufacturing Company.

REV	DESCRIPTION	DATE
B	UPDATED ANVIL INSERT PICTORIALY; UPDATED REFERENCE DIMENSIONS	10-31-91
C	123878 SPRING WAS 506006	01-07-94
D	124197 ANVIL WAS 122158, 124199 JAWS WAS 118900, 124198 LOCATOR WAS 118913 CAP. REMOVED SPRING 123878 AND FOLLOWER 118912.	07-27-94



SECTION A-A

MATERIAL:	-	SPEC: -	TOLERANCES UNLESS OTHERWISE SPECIFIED		HUCK MANUFACTURING COMPANY I.S.D. 85 GRAND STREET, P.O. BOX 2270 KINGSTON, NEW YORK 12401			
HARDNESS:	-							
HEAT TREAT:	-	SPEC: -	.XX, .XXX	±	-	NOSE ASSEMBLY -10 FLOOR FASTENER		
SURF. TREAT:	-	SPEC: -	INT. COR. RADII		-			
SURFACE FINISH NOT TO EXCEED		Ra	BREAK EDGES		-	DET:SMR	CK:	DATE: 8-19-91
IDENTIFICATION PER SPEC 42-311: ★ CHEMICAL ETCH			ANGLES	±	-	FOC.	B	
SURFACES TO BE ☉, //, ⊕, ⊥, & ▤ WITHIN		-	T.I.R.	FINAL ASSY: -		FAC.		
							99-3407	