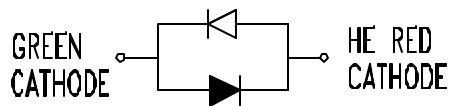
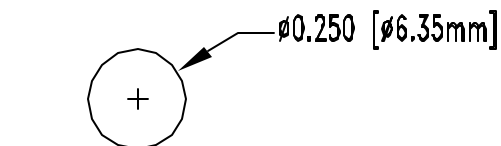
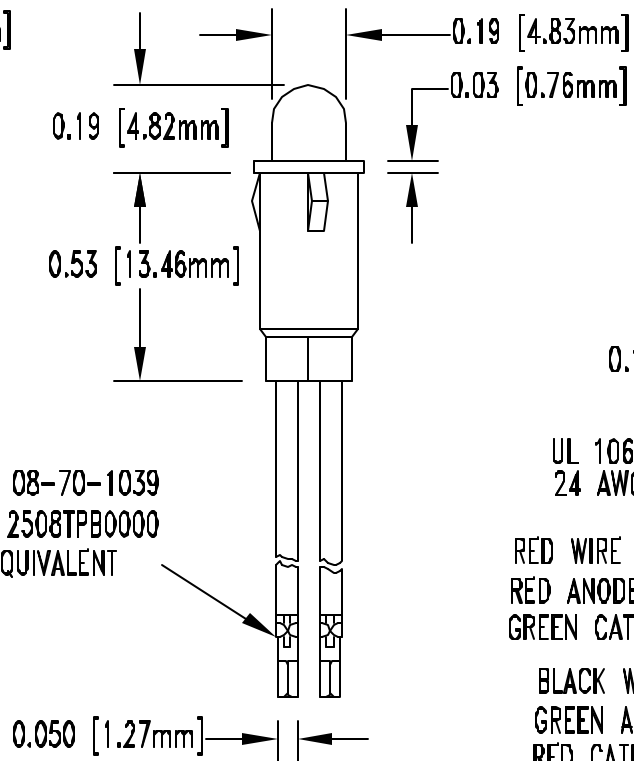


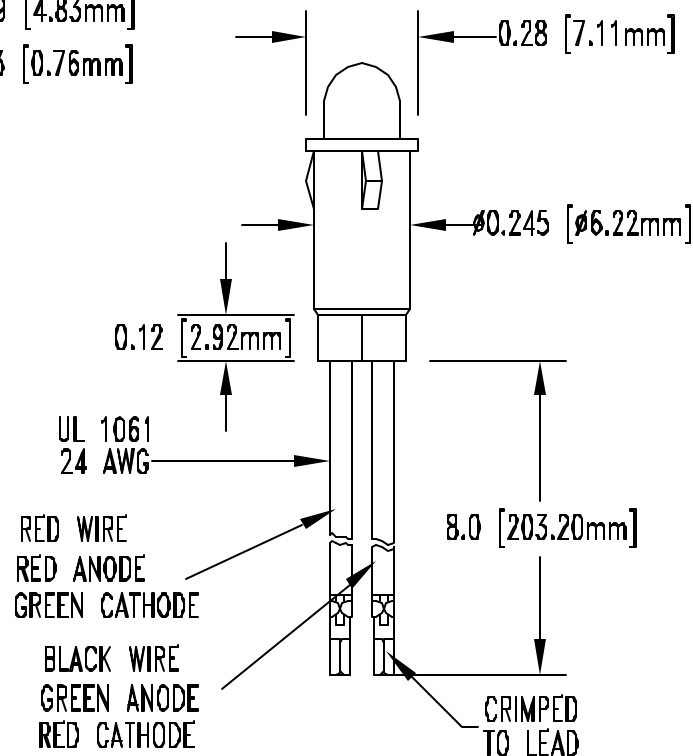
RECOMMENDED MOUNTING HOLE DIA.



MOLEX: 08-70-1039
LEOCO: 2508TPB0000
OR EQUIVALENT



REV	DESCRIPTION	DATE	APPROVED
A	PRDUCTION RELEASE		



LED PART NO.	Chip		LENS APPEARANCE	Absolute Maximum Ratings $T_a = 25^\circ\text{C}$				Electro-Optical Data @ 20mA			Viewing Angle (deg)
	EMITTED COLOR	PEAK WAVE λ_P (nm)		$\Delta\lambda$ (nm)	pd (mW)	If (mA)	Peak If (mA)	Vf (V)		Iv Typ. (mcd)	
5BC	HE RED	635	WHITE DIFFUSED	45	80	30	150	Typ.	Max.	45.0	50.0
	GREEN	568		30	80	30	150			45.0	50.0

REP: PRISM/OEM: CISCO

ABSOLUTE MAXIMUM RATINGS ($T_a = 25^\circ\text{C}$)

REVERSE VOLTAGE _____ 5V
 REVERSE CURRENT _____ 100uA
 OPERATING TEMPERATURE RANGE _____ $-40^\circ\text{C} - 80^\circ\text{C}$
 STORAGE TEMPERATURE _____ $-40^\circ\text{C} - 100^\circ\text{C}$
 LEAD SOLDERING TEMPERATURE(1/16" FROM BODY) _____ 260°C FOR 5 SECONDS

UNLESS OTHERWISE SPECIFIED: DIMENSIONS ARE IN INCHES		 4 THOMAS, IRVINE, CA. 92618 TEL: (949) 961-8808 FAX: (949) 961-8074	
TOLERANCES			
DECIMALS	ANGULAR		
.X	$\pm .015$	$\pm 1^\circ$	
.XX	$\pm .010$		
.XXX	$\pm .005$		
.XXX	$\pm .001$		
DESIGNER	DATE	PART NAME:	
SHANE IRVING	12/11/01	T-13/4 (5mm) PANEL MOUNT	
CHECKER	DATE	SIZE	DWG NO.
M CHEN	12/11/01	A	PNSBCWB-CC3
SCALE 2=1		CAGE CODE 32559	SHEET 1 OF 1

Mouser Electronics

Authorized Distributor

Click to View Pricing, Inventory, Delivery & Lifecycle Information:

BIVAR:

PM5BCW8-CC3