



## 5W Car Charging Adapter for Portable Electronics CLA05D is Compliant with US and EU Vehicle Standards



### Features

- High Efficiency
- Compliant with EU Vehicle Standards
- Robust Design
- Battery Charging

### Applications

- Portable Electronics
- Mobile Phones

### Safety Approvals

- CE
- C-Tick
- cUL/UL
- E-mark

### Mechanical Characteristics

- Length: 85.28mm (3.36in)
- Diameter (at cord): 30.48mm (1.2in)
- Diameter (at tip): 19.3mm (0.76in)
- Weight: 81.7g (2.88oz)

### Output Specifications

Model	DC Output Voltage	Load		Ripple P-P (max.)
		Min.	Max.	
CLA05D-050A-R	5.0V	0A	1.0A	100mVp-p

PhiHong is not responsible for any error, and reserves the right to make changes without notice. Please visit our website at [www.phihong.com](http://www.phihong.com) for the most up-to-date specifications and contact information.

**Input:**
**AC Input Voltage Range**

10 to 30V DC (12 Volts Nominal)

**Input Current**

$\leq 20\text{mA}$  at no load (12V Input)

$\leq 0.65\text{A}$  at no load (10V Input)

$\leq 0.27\text{A}$  at no load (30V Input)

**Output:**
**Output Power**

5W

**Efficiency**

75% minimum at maximum load and 12V

**Rise time:**

$< 30\text{mSec.}$

**Input Over-Voltage**

Fuse will blow with no damage to unit

**Output Over-Voltage**

By Zener clamping

**Reverse Polarity Protection**

Fuse will blow with no damage to unit

**Short-Circuit Protection**

Current limiting without damage to unit

**Environmental:**
**Temperature**

Operation  $-20$  to  $60^{\circ}\text{C}$

Non-operation  $-40$  to  $80^{\circ}\text{C}$

Operating Humidity 0 to 95%

**MTBF**

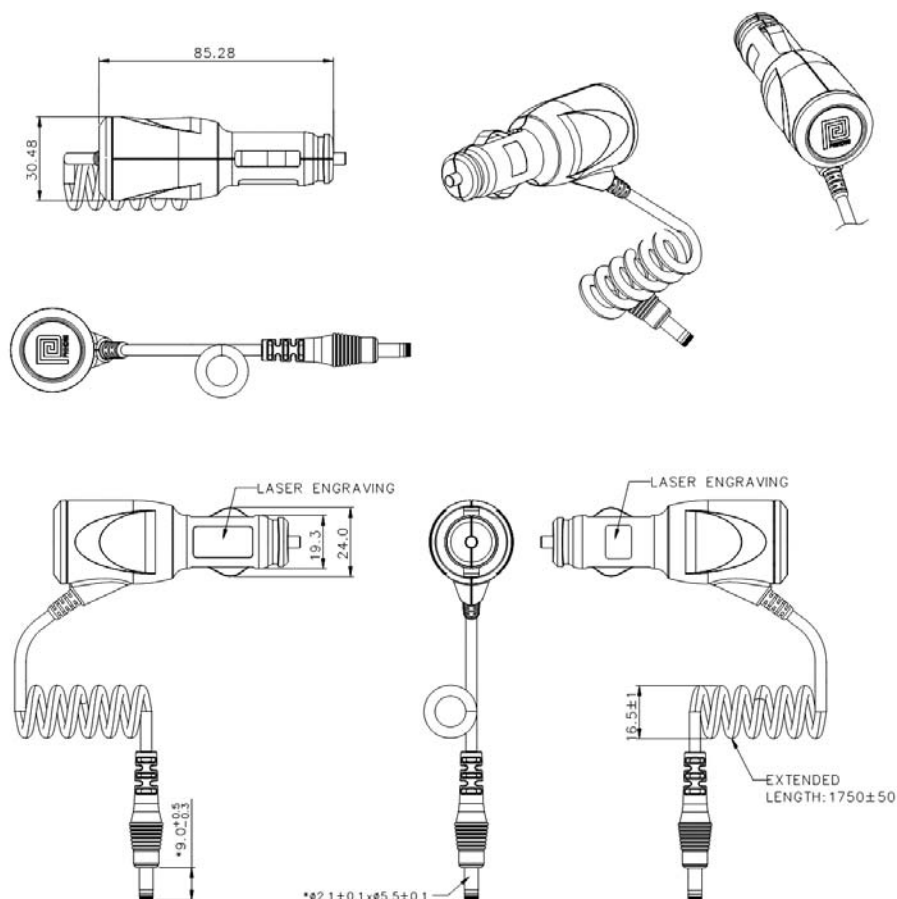
100K Hours Minimum at full load and ambient  $25^{\circ}\text{C}$

**DC Output Connector**

2.1mm x 5.5mm x 9mm Center Positive Barrel

**DC Cord**

1.75 Meters (extended)

**Dimension Diagram Unit: mm**


# Mouser Electronics

Authorized Distributor

Click to View Pricing, Inventory, Delivery & Lifecycle Information:

[Phihong:](#)

[CLA05D-050A-R](#)