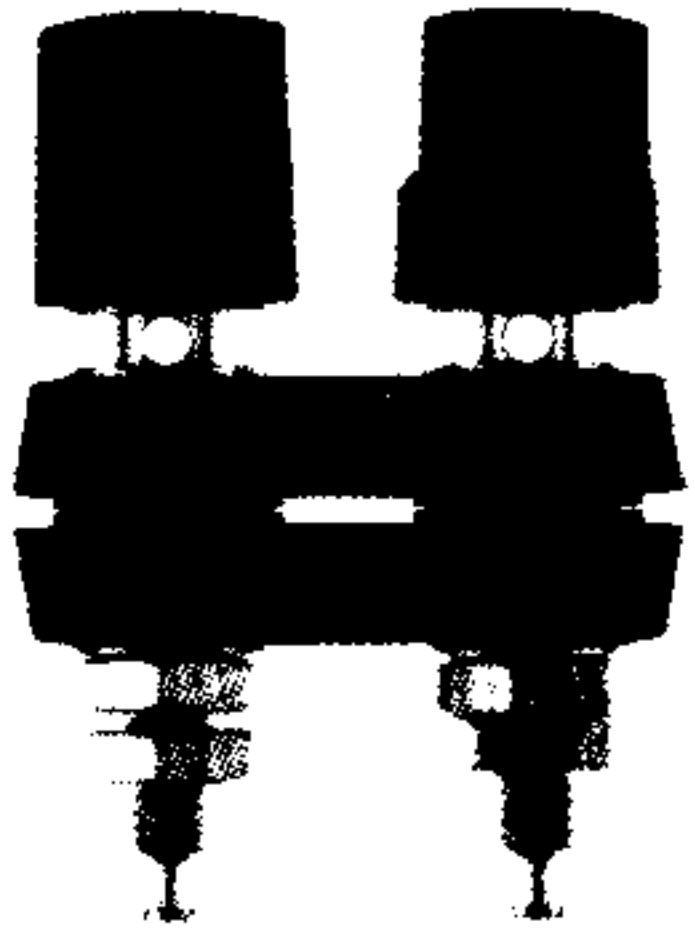


DUAL BINDING POSTS

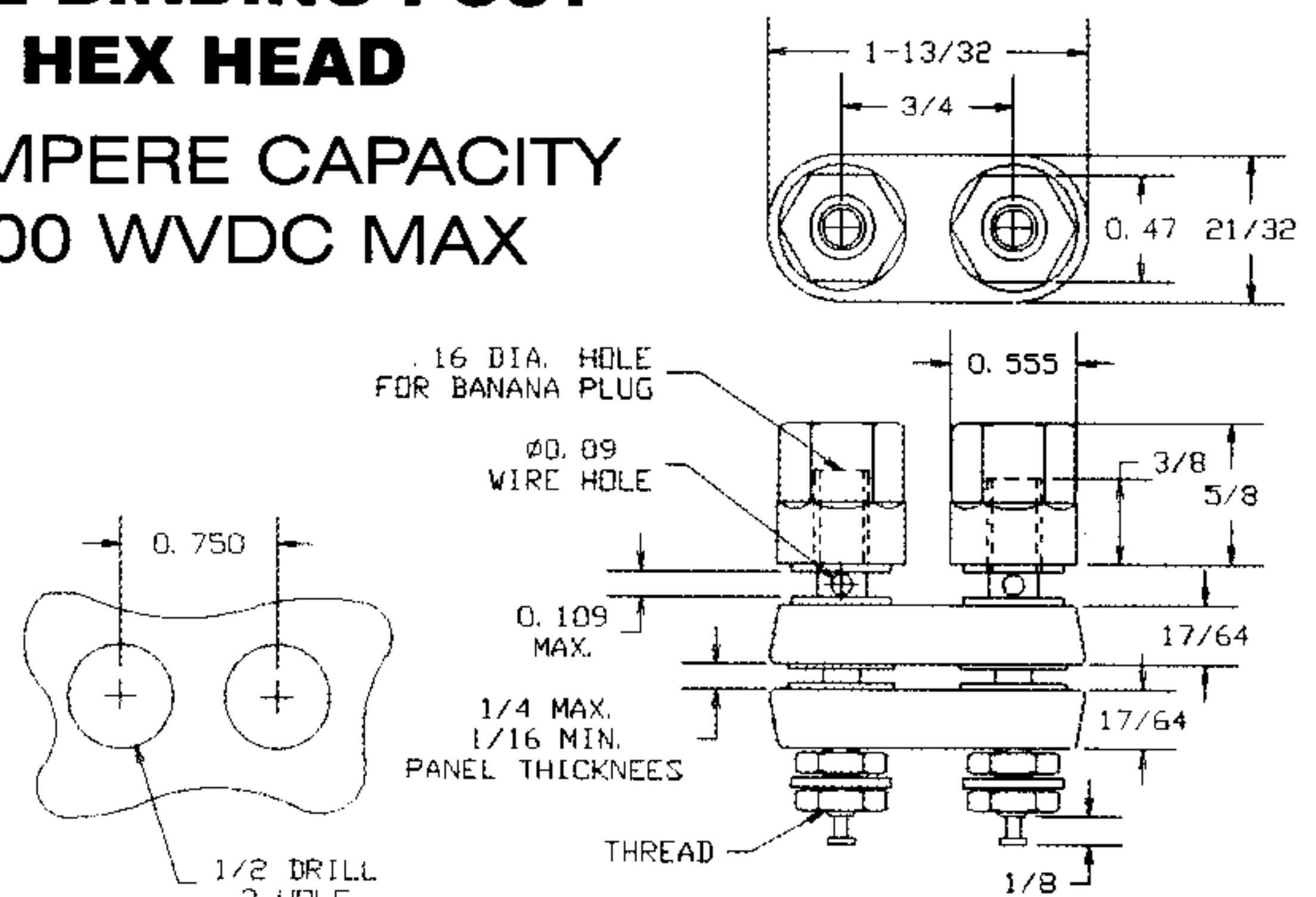
01-1532-1-02XX BRIGHT TIN* } 10-32 THREADS
01-1532-1-0300 GOLD PLATE }
01-1504-1-02XX BRIGHT TIN* } 8-32 THREADS
01-1504-1-0300 GOLD PLATE }
 FINISH COLOR



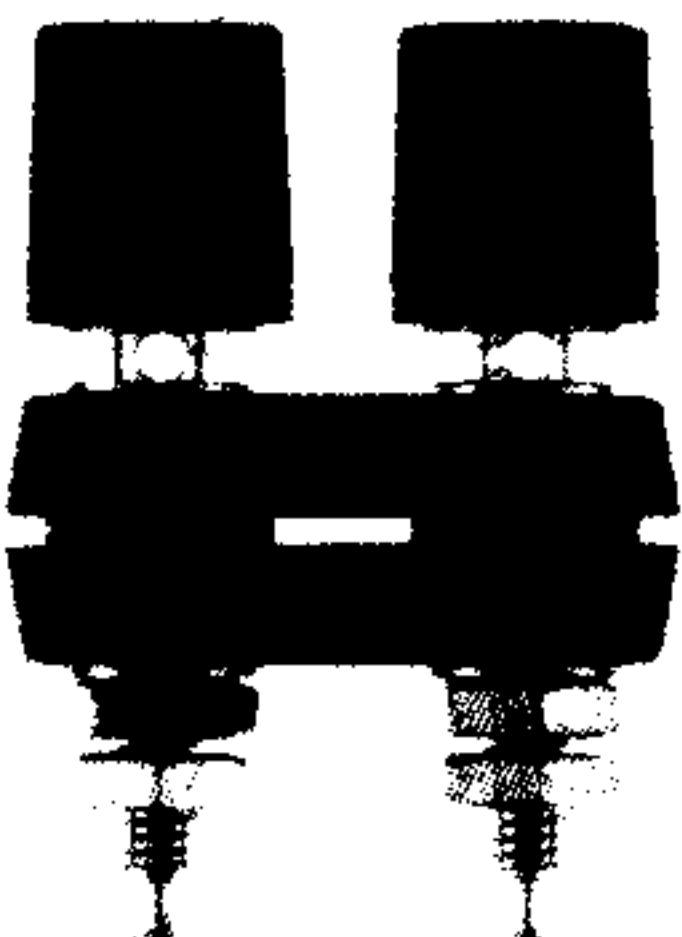
Post is completely insulated from chassis. Accommodates panels from 1/16" to 1/4" thick. Design of post allows for five ways to connect: accepts standard banana plug, clip on main shaft, up to No.14 wire thru cross hole clamped with head, wire looped around shaft and clamped with head, spade lug clamped with head. Insulation is molded lexan. Metal parts are brass.(electroplated).
 * Nut and inserts are nickel plated

| 1 RED HEAD + 1 BLK HEAD | RED | BLACK |
|-------------------------|-----|-------|
| 00 | 12 | 10 |

**DUAL BINDING POST
 HEX HEAD**
 30 AMPERE CAPACITY
 1000 WVDC MAX



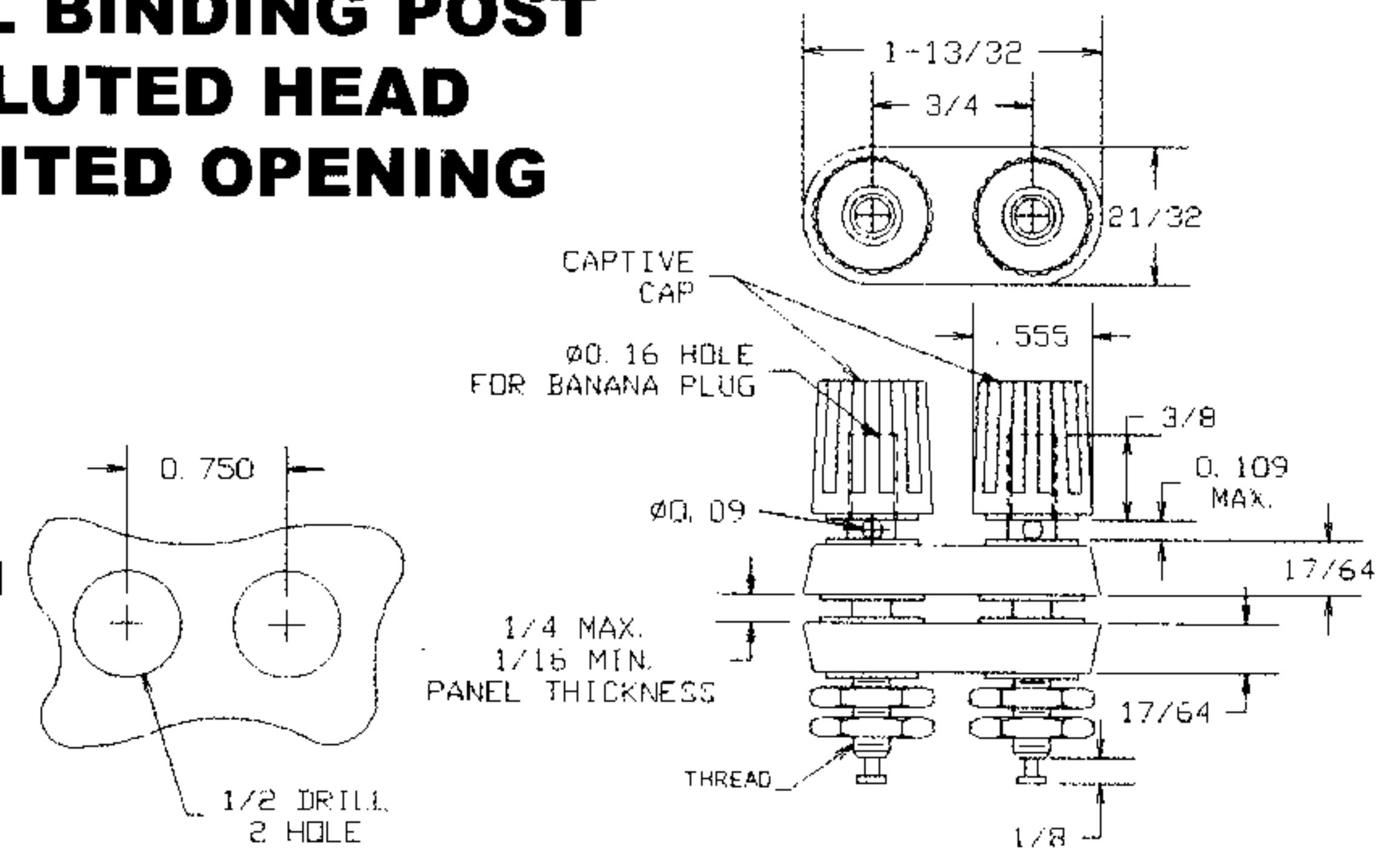
01-1533-1-02XX BRIGHT TIN* 10-32 THREADS
01-1508-1-02XX GOLD PLATE 8-32 THREADS
 FINISH COLOR 30 AMPERE CAPACITY
 1000 WVDC MAX.



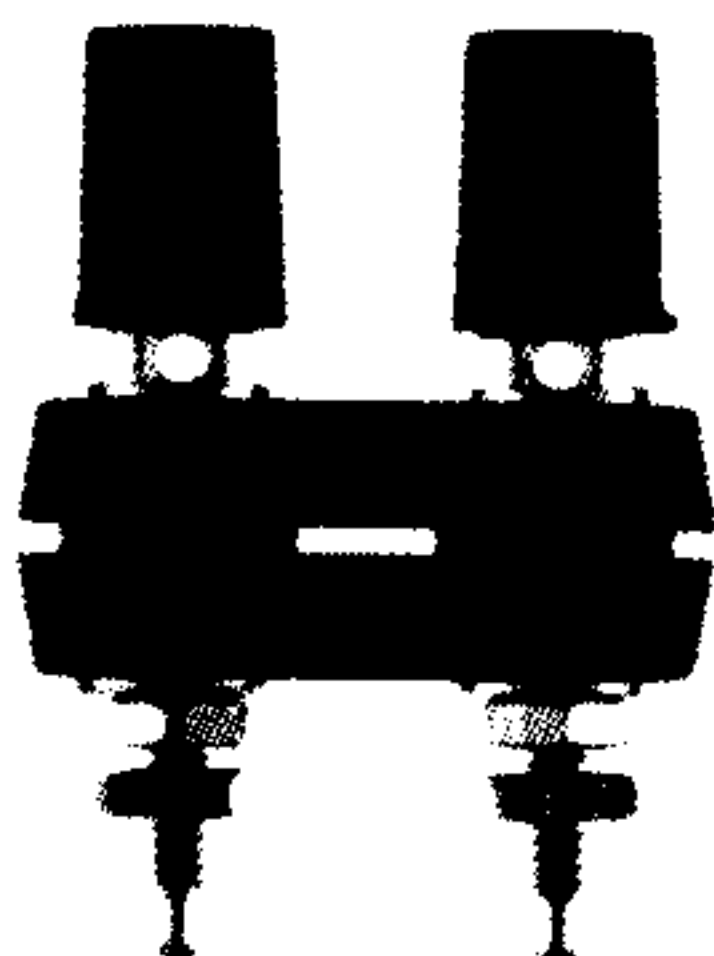
Post is completely insulated from chassis. Accommodates panels from 1/16" to 1/4" thick. Design of post allows for five ways to connect: accepts standard banana plug, clip on main shaft, up to No.14 wire thru cross hole clamped with head, wire looped around shaft and clamped with head, spade lug clamped with head. Insulation is molded lexan. Metal parts are brass.(electroplated)
 Fluted caps. * Nut and inserts are nickel plated

| 1 RED HEAD + 1 BLK HEAD | RED | BLACK |
|-------------------------|-----|-------|
| 00 | 12 | 10 |

**DUAL BINDING POST
 FLUTED HEAD
 LIMITED OPENING**



01-1557-1-02XX BRIGHT TIN* } 6-32 THREADS
01-1557-1-0300 GOLD PLATE }
01-1558-1-02XX BRIGHT TIN* 8-32 THREADS
 FINISH COLOR

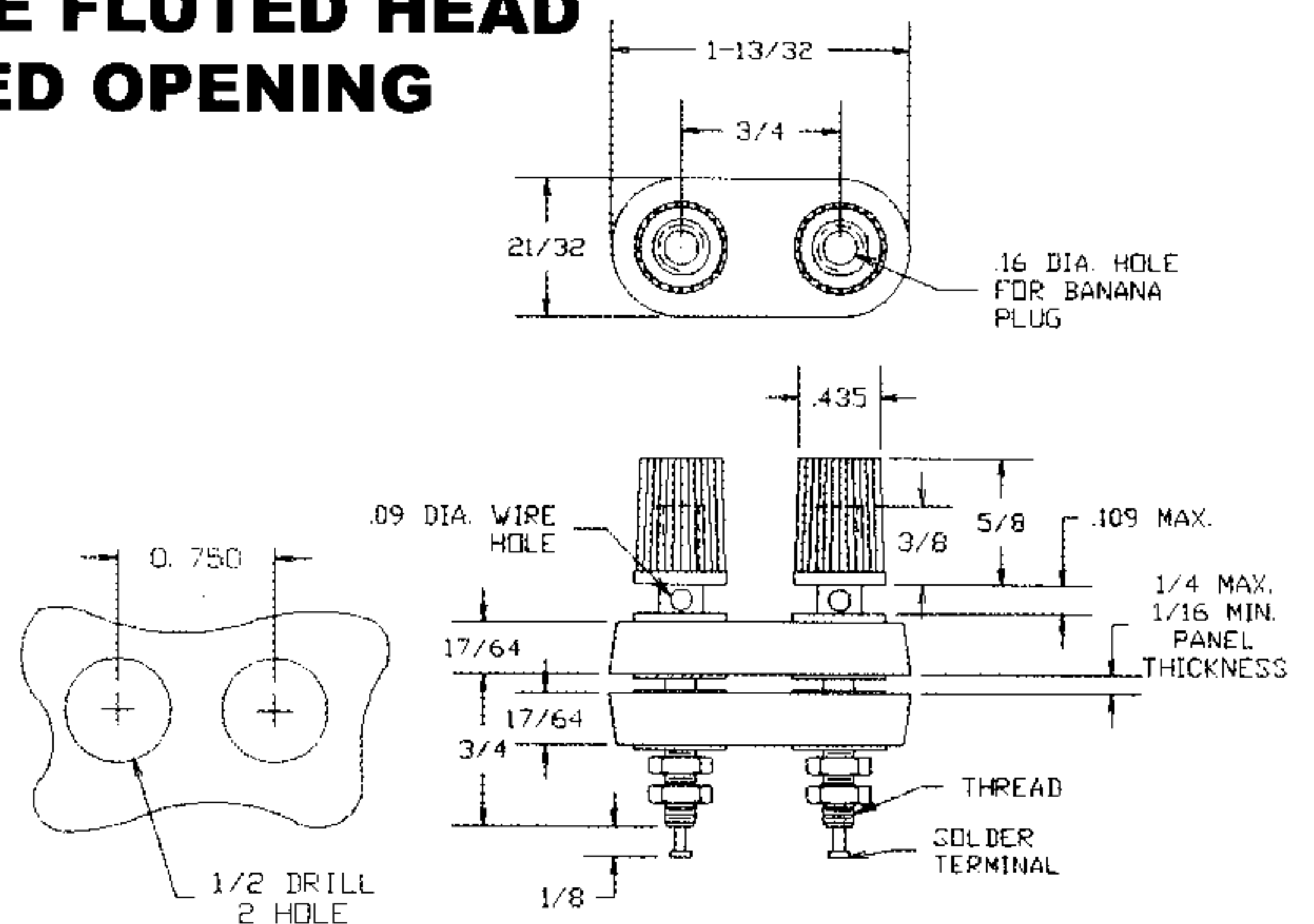


15 AMPERE CAPACITY
 1000 WVDC MAX.

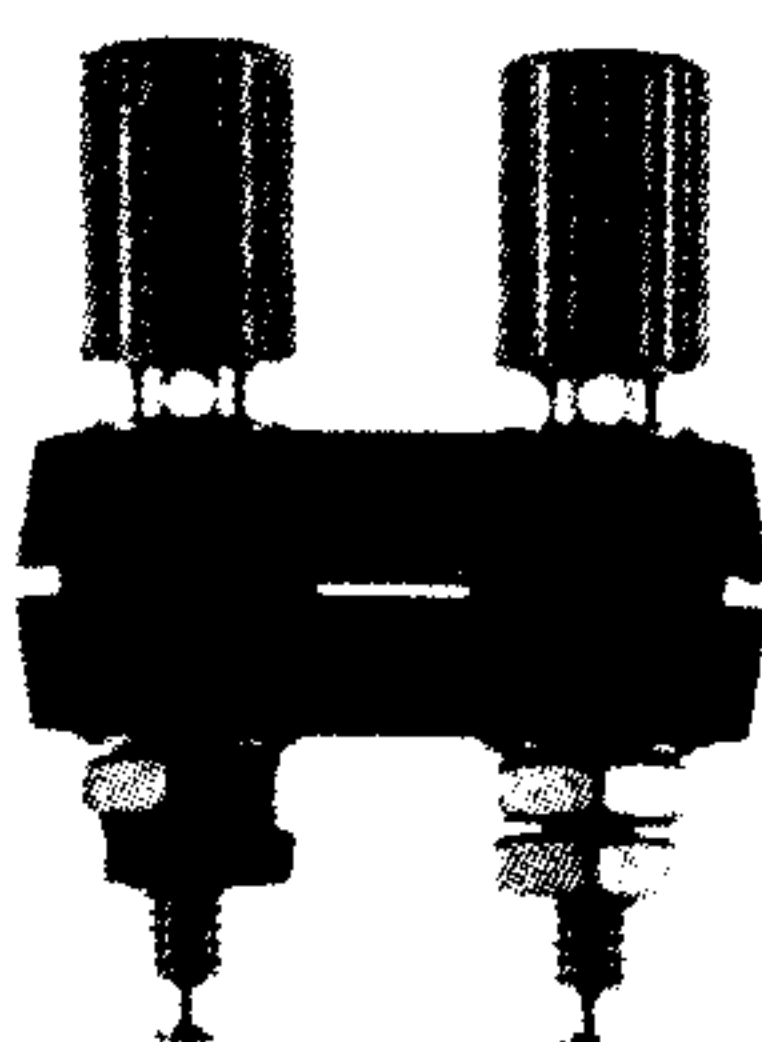
Post is completely insulated from chassis. Accommodates panels from 1/16" to 1/4" thick. Design of post allows for five ways to connect: accepts standard banana plug, clip on main shaft, up to No.14 wire thru cross hole clamped with head, wire looped around shaft and clamped with head, spade lug clamped with head. Insulation is molded nylon. Metal parts are brass.(electroplated)
 * Nut and inserts are nickel plated

| 1 RED HEAD + 1 BLK HEAD | RED | BLACK |
|-------------------------|-----|-------|
| 00 | 12 | 10 |

**DUAL BINDING POST
 MINIATURE FLUTED HEAD
 LIMITED OPENING**



01-1590-1-0210 BRIGHT TIN* 10-32 THREADS
 FINISH COLOR

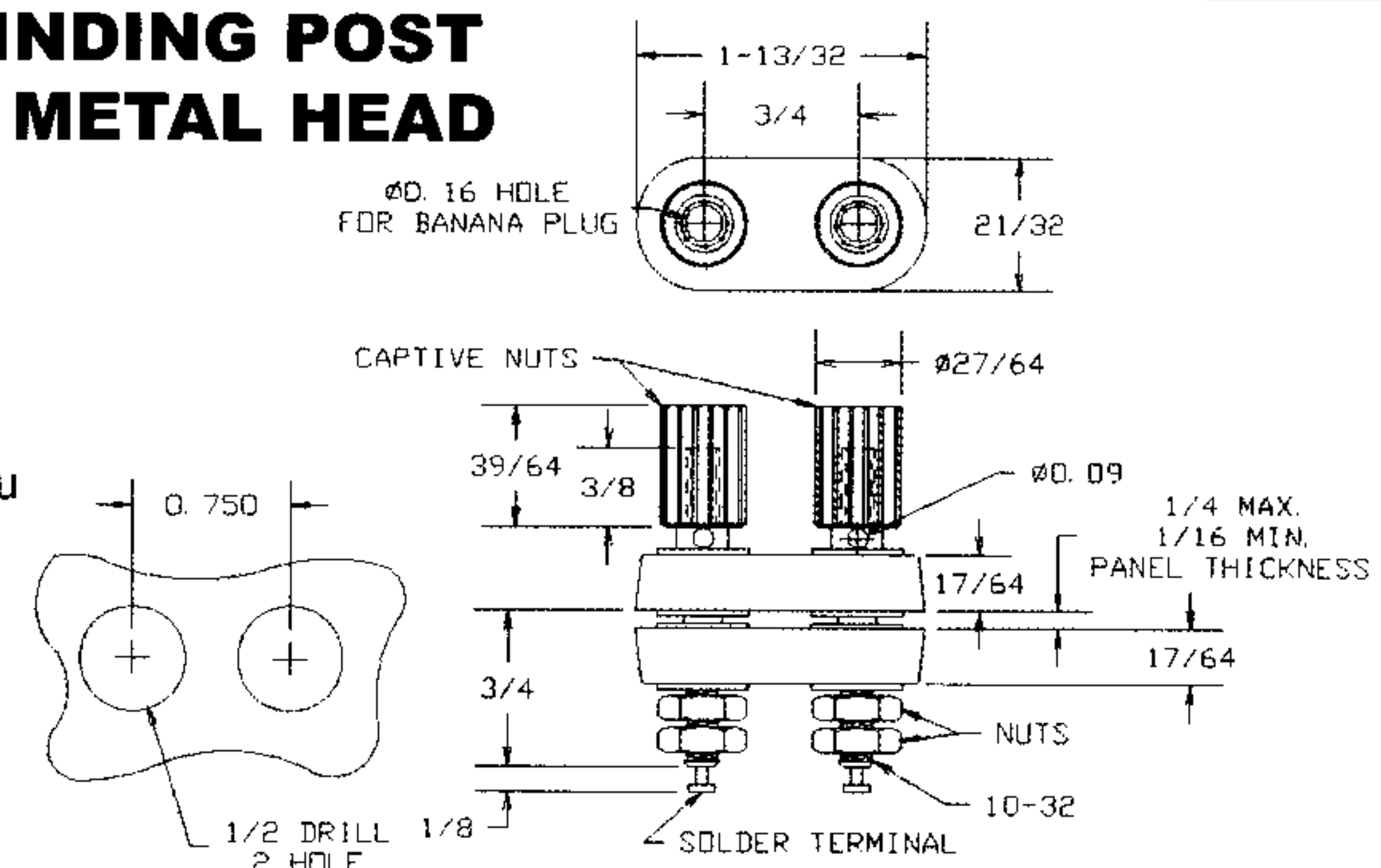


30 AMPERE CAPACITY
 1000 WVDC MAX.

Post is completely insulated from chassis. Accommodates panels from 1/16" to 1/4" thick. Design of post allows for five ways to connect: accepts standard banana plug, clip on main shaft, up to No.14 wire thru cross hole clamped with head, wire looped around shaft and clamped with head, spade lug clamped with head. Insulation is molded lexan. Metal parts are brass.(electroplated)
 * Nut and inserts are nickel plated

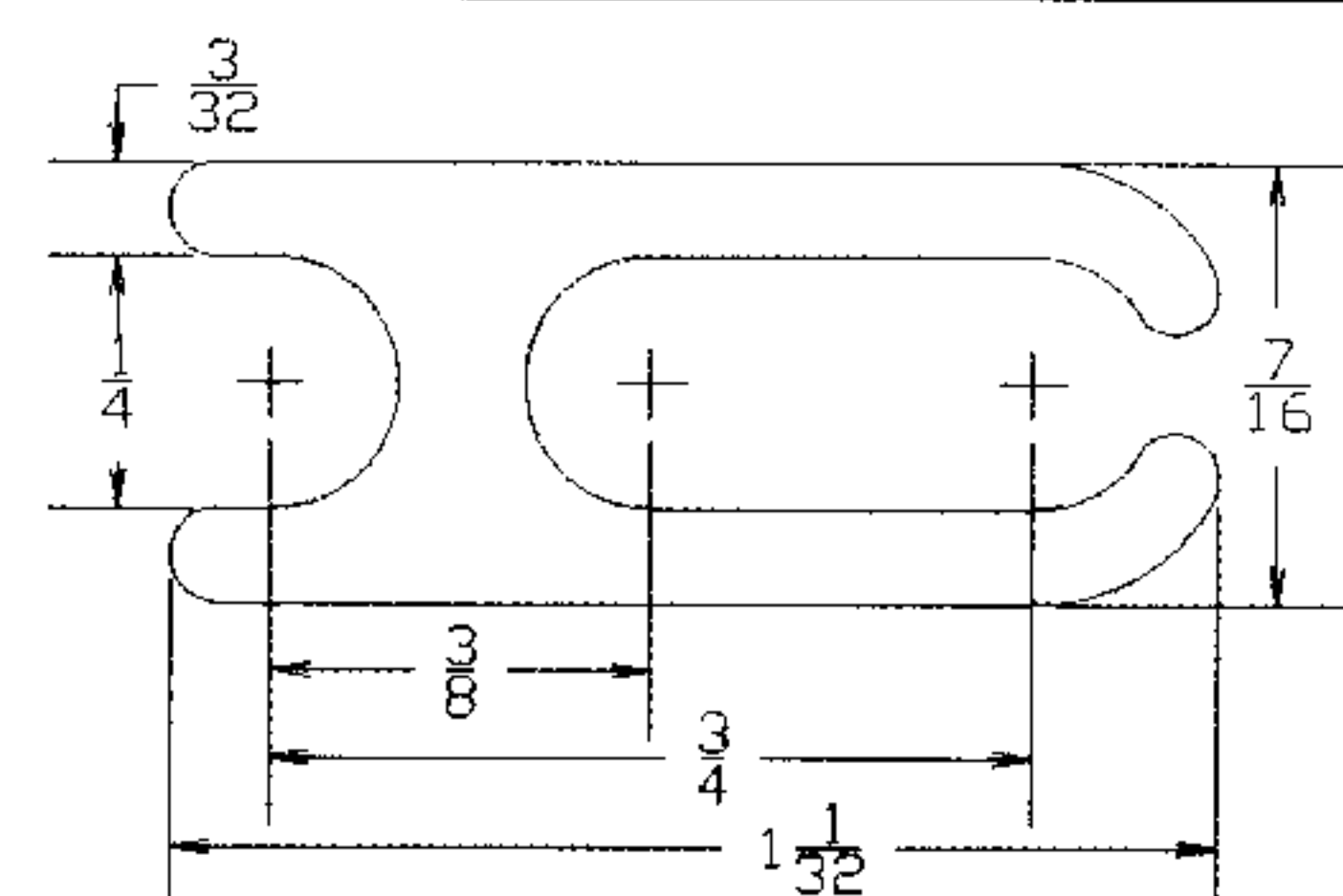
| 1 RED HEAD + 1 BLK HEAD | RED | BLACK |
|-------------------------|-----|-------|
| 00 | 12 | 10 |

**DUAL BINDING POST
 FLUTED METAL HEAD**



01-1111 SHORTING LINK FOR DUAL BINDING POST

Spring brass, nickel plated, 1/32" thickness. Designed for 3/4" centers. This shorting link is compatible with all of the above dual binding posts.



CONCORD