

CXA-0368

Dimming/Connector Type

■ Features

- 2-output
 - Applicable panel size*: 10 to 12 inches
 - With brightness control function (Pulse Wide Modulation mode).
 - With shut down function.
 - With a sensing function for running out of lamp (alarm output).
 - In the high-voltage generator(a terminal and a pattern), an anti-dust measure by silicone application is taken.
- (Notice) Applicable panel size becomes a standard.

■ Applications



CXA-0368 Specifications (Please refer to each specification before use)

Electrical Characteristics

Item	Unit	Symbol	Specification			Condition						Remark
			min	typ	max	Vin(V)	Vrmt(V)	Vbr(V)	Rbr(kΩ)	Ta(°C)	RL(kΩ)	
Output Current	mA	Iout (Maximum dimmer)	11.3	12.0	12.7	12±1.2	5	0	-	-10 to +65	75	Voltage dimmer (*1)
			11.3	12.0	12.7	12±1.2	5	-	0	-10 to +65	75	Volume dimmer (*1)
		Iout (Minimum dimmer)	3.0	4.0	5.0	12±1.2	5	3	-	-10 to +65	75	Voltage dimmer (*1)
			3.0	4.0	5.0	12±1.2	5	-	10	-10 to +65	75	Volume dimmer (*1)
Input Current	A	Iin1	-	0.6	1.2	12±1.2	5	0		-10 to +65	75	Remote ON
	mA	Iin2	-	1	2	12±1.2		0		-10 to +65	75	Remote OFF
Frequency	kHz	Freq1	50	56	62	12±1.2	5	0		-10 to +65	75	
	Hz	Freq2(Duty frequency)	150	175	200	12±1.2	5	3	10	-10 to +65	75	
Open Circuit Voltage	Vrms	Vopen	1500	1600	-	10.8min.	5	0		-10 to +65	∞	Open load
Alarm Signal	V	Vst	-	5	-	12±1.2	5	0		-10 to +65	∞	In case of lamp anomaly (*2)
			-	0	-	12±1.2	5	0		-10 to +65	75	On a normal operation (*2)

(*1) Please refer to the connection diagram for details of a dimming method. Iout is value of 2 lamps in total.

(*2) Please refer to the connection diagram for details of alarm output.

Other Specifications

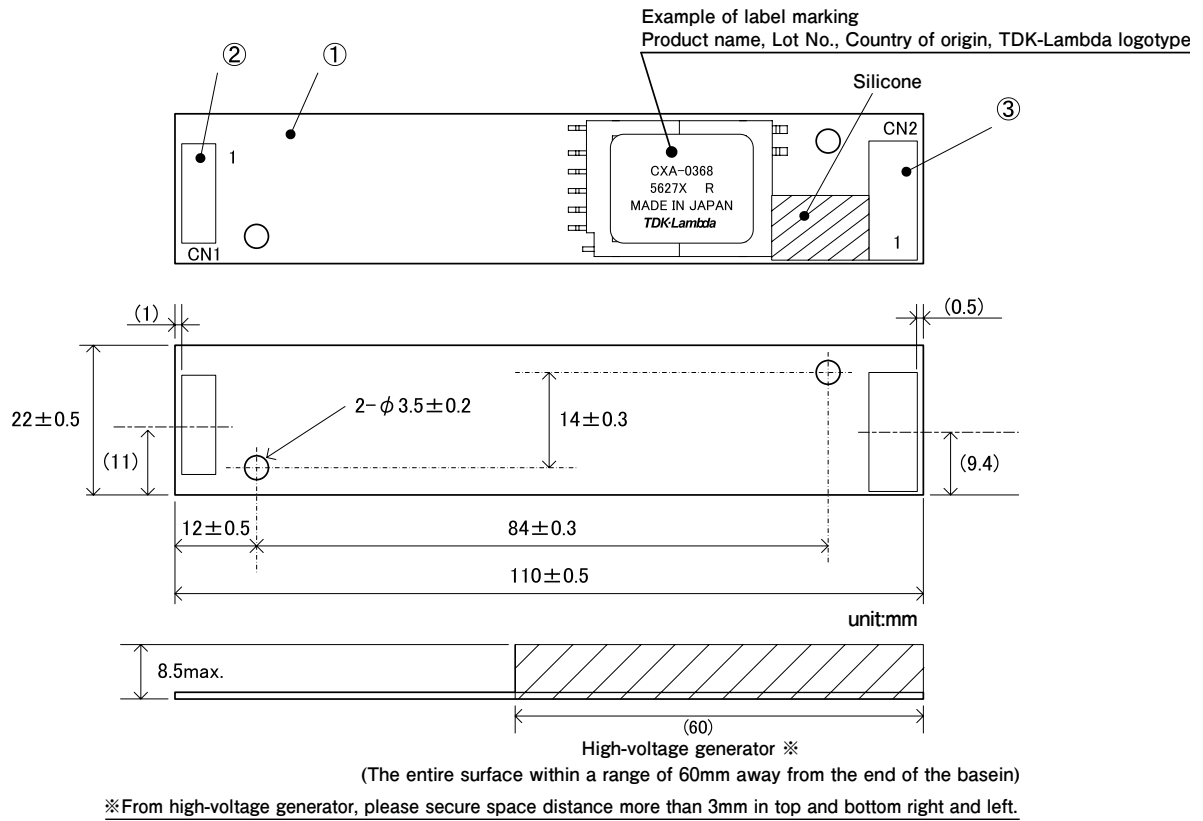
Dimming Function		Yes
Operating Temperature	°C	-10 to +65
Storage Temperature	°C	-20 to +80
Operating Humidity Ratio	RH%	95Max
Safety Standard		—
Weight	g	21
Dimensions(WxDxH)	mm	110x22x8.5 (*3)
Fused Input		Yes
Remote ON / OFF		Yes
Alarm Signal Function		Yes
Shutdown Function		Yes
Silicone Coating on High Voltage Area		Yes

(*3) These dimensions are indicated the maximum only H. Others are typical values.

■ Conformity to RoHS Directive

This means that, in conformity with EU Directive 2002/95/EC, lead, cadmium, mercury, hexavalent chromium, and specific bromine-based flame retardants, PBB and PBDE, have not been used, except for exempted applications.

Outline Drawing



unit:mm

Connector

Connector number	Part number	Model/Material	Quantity	Remarks	Recommended applicable connector
①	Printed circuit board PCB	Composite (CEM-3)	1	UL94V-0 t=1.0	—
②	Input connector CN1	53261-0871	1	Molex Inc.	51021-0800
③	Output connector CN2	SM02(7-D1)B-BHS-1-TB (LF) (SN)	1	JST Mfg. Co., Ltd.	BHR-04VS-1

Terminal Numbers And Functions

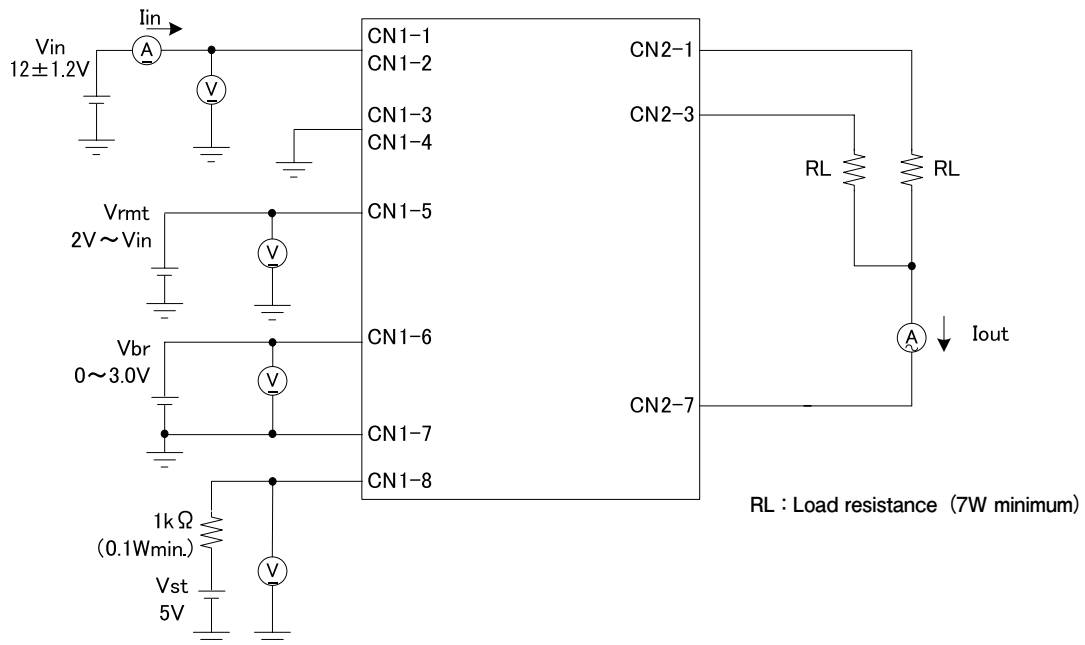
Input side CN1

Terminal number	Symbol	Rated voltage	Remarks
CN1-1	Vin	12±1.2V	Power input
CN1-2			
CN1-3	GND	0V	Ground
CN1-4			
CN1-5	Vrmt	-1 to 14.2V	Remote terminal -1 to 0.8V : OFF 2.0 to 14.2V : ON
CN1-6	Vbr1/Rbr1	0 to 3.0V/0 to 10kΩ	Dimmer terminal 1
CN1-7	Vbr2/Rbr2	GND/0 to 10kΩ	Dimmer terminal 2
CN1-8	Vst(Output)	13.2V/10mA	Alarm output Lump open : 13.2V

Output side CN2

Terminal number	Connection		Remarks
	Symbol	Rated voltage	
CN2-1	V _{HIGH1}	600Vrms	Output 1
CN2-2	V _{HIGH2}	600Vrms	Output 2
CN2-3	N.C.	—	N.C.
CN2-4	V _{LOW}	(2V)	Output 1, 2 return

Connections



Be product having alarm output to inform in the above shut down function having operated.

When lamp (Load) is connected normally, CN1-8 impedance is low (GND level), and become a high impedance (open collector) when lamp is opened.

To confirm operation of alarm output, apply voltage in CN1-8 and have measured it.