

SMD Push Switches

Japan

Type: **ESB33 (H=6.0 mm)**

Low profile and heavy operation force

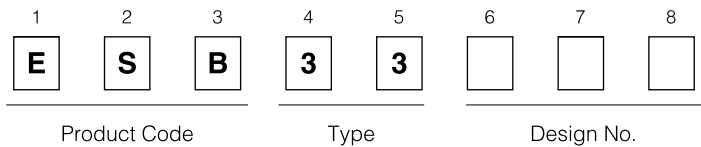
■ Features

- Low profile (H=6.0 mm)
- 3 N and 5 N operating force availables
- A wide range of acceptable currents from microcomputer control to relay control signals

■ Recommended Applications

- Operation switches for Automobiles (e.g. heater control switches etc.)
- Used for secondary power switches for lower voltage in Consumer Electronic Equipment and different types of mode switches

■ Explanation of Part Numbers



■ Major Specifications

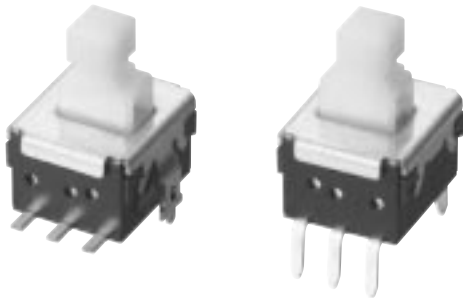
Rating	50 μ A 3 Vdc to 0.2 A 14 Vdc
Travel	Lock travel=1.5 mm Full travel=2.3 mm
Mounting Height	6.0 mm
Poles and Throws	2-poles 2-throws
Operating Mode	Self-lock, Non-lock
Switching Mode	Non-shorting
Minimum Quantity/Packing Unit	100 pcs. (Vinyl Bag)
Quantity/Carton	2000 pcs.

■ Standard Products

Operating Mode	Terminals	Operating Force	Part Numbers	Lever Color
PP	Wave Soldering	3.0 N \pm 1.0 N	ESB33133	Light Yellow
NL			ESB33134	
PP		5.0 N \pm 1.5 N	ESB33153	Black
NL			ESB33154	
PP	Surface Mount	3.0 N \pm 1.0 N	ESB33533	Light Yellow
NL			ESB33534	
PP		5.0 N \pm 1.5 N	ESB33553	Black
NL			ESB33554	

Note: PP=Self-lock NL=Non-lock

Design and specifications are each subject to change without notice. Ask factory for the current technical specifications before purchase and/or use. Should a safety concern arise regarding this product, please be sure to contact us immediately.

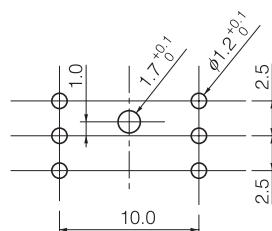
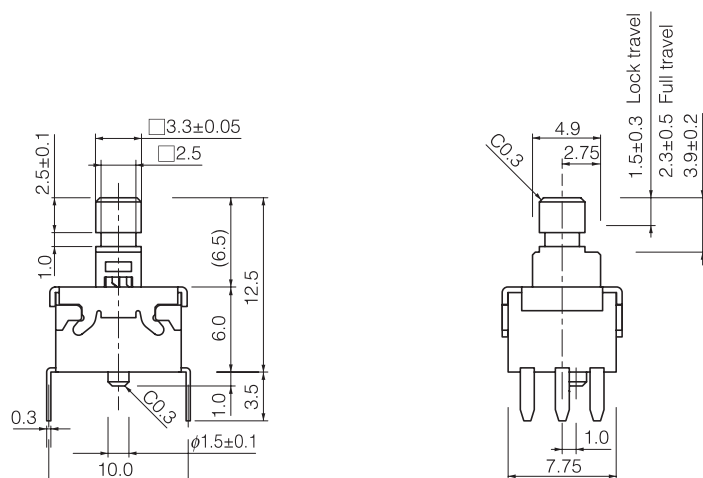


■ Dimensions in mm (not to scale)

No. 1

ESB33133

2-poles 2-throws

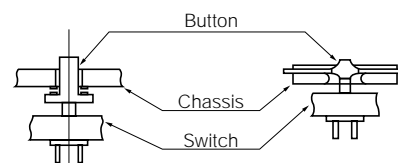
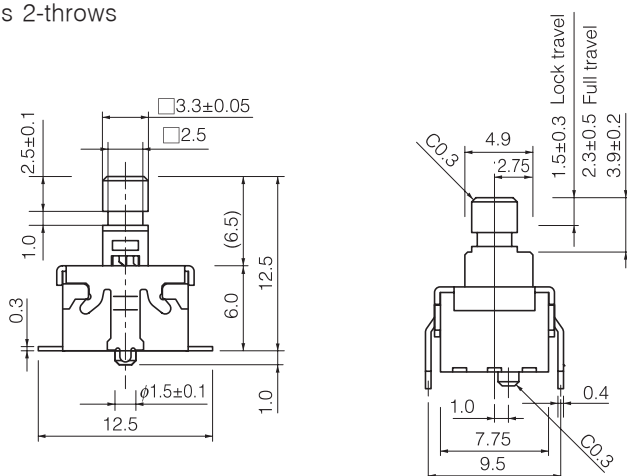


Recommended PWB piercing plan
(Tolerance: ± 0.05)
View from terminal side

No. 2

ESB33533

2-poles 2-throws



■ Application Notes:

- For the button design, a floating type as shown above right is recommended.
(Consult us for direct attachment to the lever.)
- Operating force should be applied at the center of the lever.