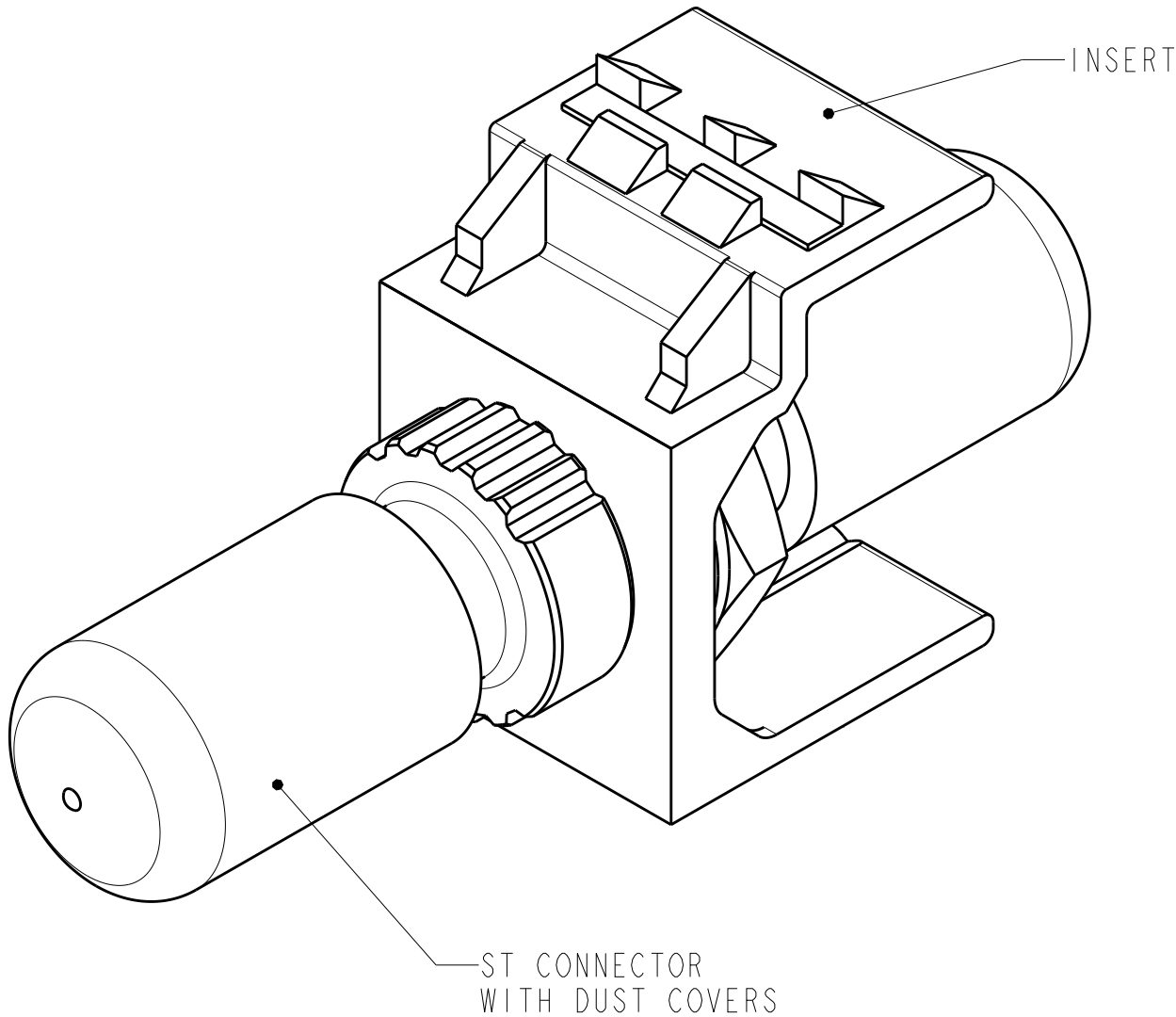


THIS DRAWING IS UNPUBLISHED.

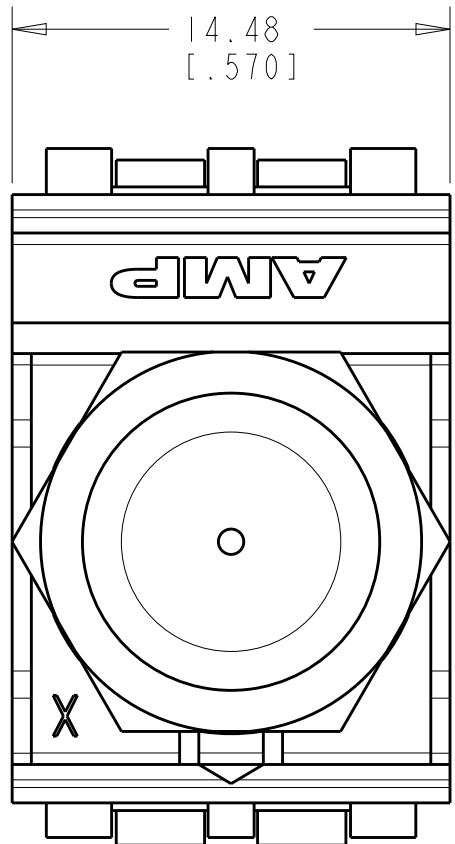
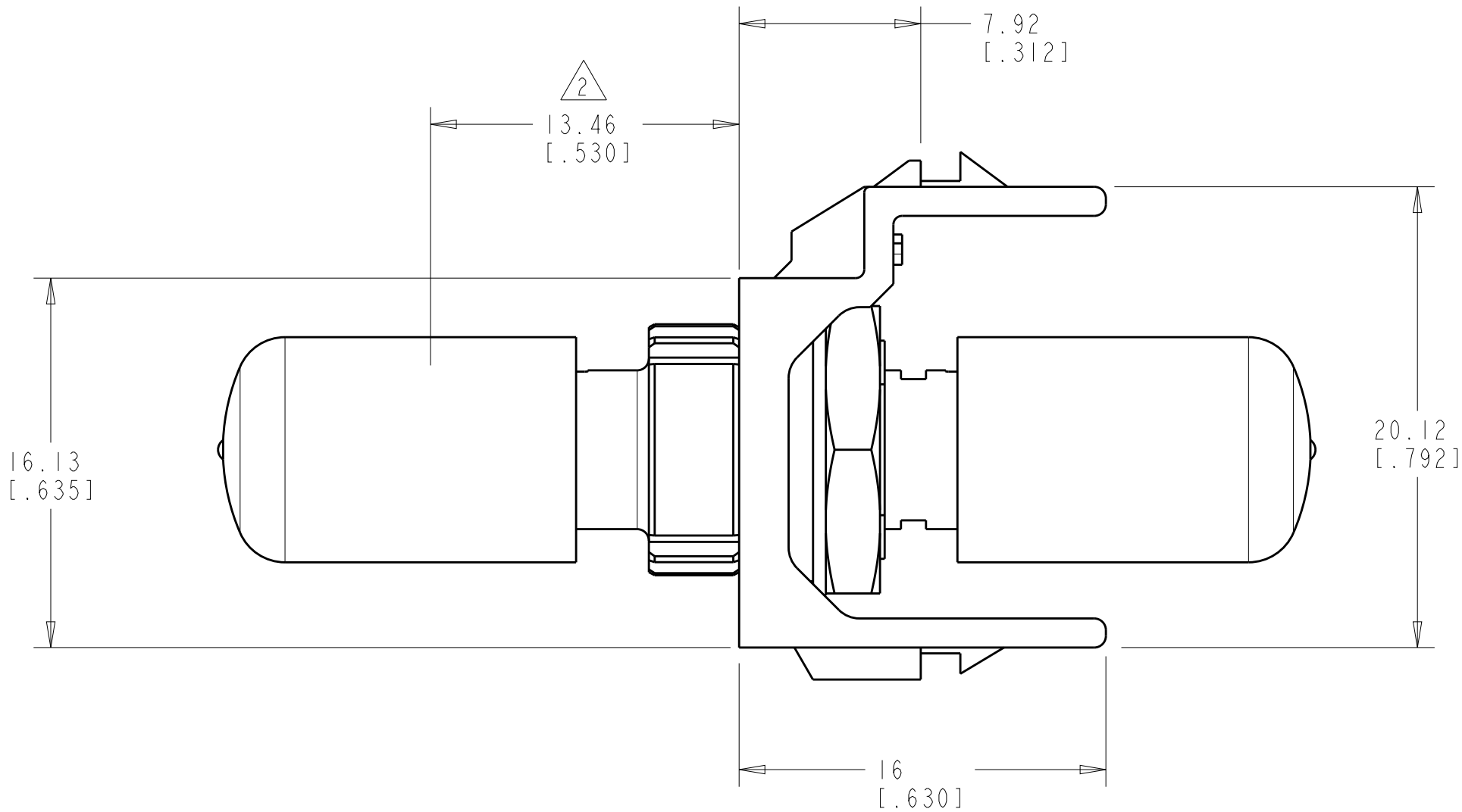
RELEASED FOR PUBLICATION

© COPYRIGHT 20BY -ALL RIGHTS RESERVED.

| LOC | DIST | REVISIONS | | | | | |
|-----|------|-----------|-----|---------------|-----------|-----|------|
| HM | 00 | P | LTR | DESCRIPTION | DATE | DWN | APVD |
| | | | B | ECO-13-007970 | 13MAY2013 | JM | RA |
| | | | | | | | |
| | | | | | | | |
| | | | | | | | |



- 1 MATERIAL:
INSERT: POLYCARBONATE MOLDING COMPOUND.
SEE TABLE FOR COLOR.
CONNECTOR: NICKEL PLATED ZINC.
- 2 13.46 [.530] DIMENSION APPLIES TO
END OF ST CONNECTOR WHEN DUST COVER IS
REMOVED.



| | |
|--------------|-------------|
| ALPINE WHITE | I-1479181-3 |
| BLACK | 1479181-2 |
| LT ALMOND | 1479181-1 |
| COLOR | PART NO |

| | | | | | | |
|--|--|---|---|--------------------|-------------------------|--------------------|
| THIS DRAWING IS A CONTROLLED DOCUMENT. | | DWN L HALL 21JAN02 | TE Connectivity | | | |
| DIMENSIONS: mm(INCHES) | | CHK G BOWMAN 22JAN02 | | | | |
| TOLERANCES UNLESS OTHERWISE SPECIFIED: | | APVD G BOWMAN 22JAN02 | NAME INSERT ASSEMBLY, ST SM-MM, SL SERIES | | | |
| 0 PLC ± 1 PLC ± 2 PLC ±.13[.005] 3 PLC ± 4 PLC ± ANGLES ± FINISH | | PRODUCT SPEC - APPLICATION SPEC - WEIGHT - | SIZE A2 | CAGE CODE 00779 | DRAWING NO C-1479181 | RESTRICTED TO - |
| MATERIAL 1 | | CUSTOMER DRAWING | SCALE 4: | SHEET 1 | OF 1 | REV B |

Mouser Electronics

Authorized Distributor

Click to View Pricing, Inventory, Delivery & Lifecycle Information:

[TE Connectivity Divested:](#)

[1479181-1](#)