

50/60 Hz Current Sensors – CS60 Series

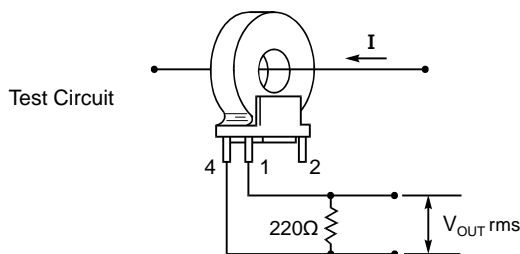
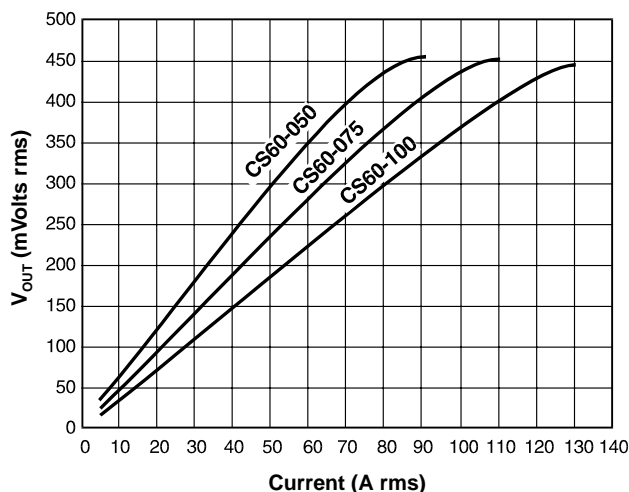


The CS60 Series measures current from 5 to 100 amps rms. Applications include sensing branch circuit overload and detecting load drop or shutdown. The sensor functions as the encapsulated secondary of a current transformer, while the conductor carrying the current to be measured serves as the “one turn primary.” Sensitivity may be enhanced by increasing primary turns.

Minimum wall thickness of the hole is 0.5 mm, which meets IEC 380 and other requirements when used with an insulated conductor. These parts are mountable on printed circuits and have a third terminal added for mechanical stability.

Samples of these and other current sensors are available for evaluation. To request samples, contact Coilcraft or visit www.coilcraft.com.

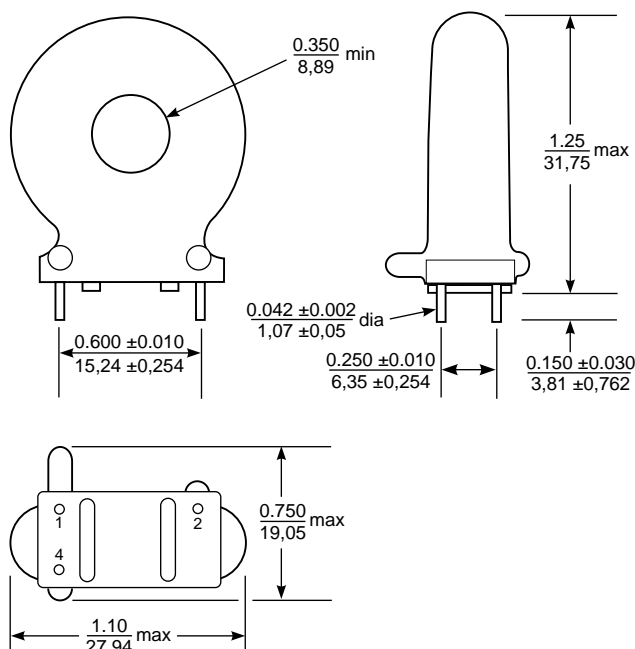
Typical Response



Part number	Recommended current	V out tolerance
CS60-050	5-50 A rms	±10%
CS60-075	5-75 A rms	±10%
CS60-100	5-100A rms	±10%

(For values below 10 A rms, see CS60-010 data sheet)

1. Operating temperature range -40°C to $+85^{\circ}\text{C}$.
2. Electrical specifications at 25°C .



Coilcraft[®]

Specifications subject to change without notice. Document 134 Revised 11/27/02

1102 Silver Lake Road Cary, Illinois 60013 Phone 847/639-6400 Fax 847/639-1469

E-mail info@coilcraft.com Web <http://www.coilcraft.com>