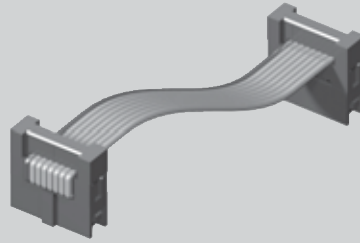
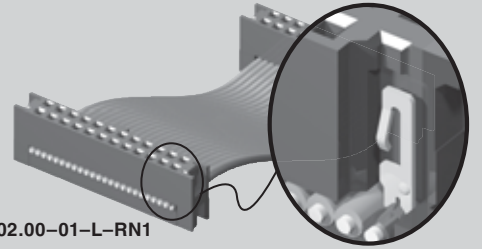




TLSD-08-D-02.00-01-L-SR



TLSD-12-D-02.00-01-L-RN1



(2,00 mm) .0787"

TLSD SERIES

COST EFFECTIVE IDC SOCKET CABLES

Mates with:
TMM, TMMH (Except -SR),
TW, MTMM, TLMM

FEATURES

- Low cost alternative to TCSD
- 1 point of contact phosphor bronze
- Strain Relief for Rugged Applications

SPECIFICATIONS

For complete specifications see www.samtec.com?TLSD

Insulator Material:
Black Glass Filled Polyester

Contact:
Phosphor Bronze
Plating:
Au or Sn over 50µ" (1,27 µm) Ni



Wire:
28 AWG 7/36 Stranded,
Tinned, Copper with Gray PVC Insulator

Current Rating:
1A per contact
Operating Temp Range:
-40°C to +105°C

Lead Size Accepted:
(0,48 mm) .019" to (0,53 mm) .021"

Contact Resistance:
15 mΩ maximum delta from initial

Insertion Depth:
(3,56 mm) .140" to (4,27 mm) .168"

Insertion Force:
(Single contact only)
2 oz. (0,56 N) average

Withdrawal Force:
(Single contact only)
1.4 oz (0,39 N) average

RoHS Compliant:
Yes

POLARIZING KEY

Specify PK-01-07 for polarizing key. Also polarizes SMM Series socket strips.

ALSO AVAILABLE

Connector only (KTLSD Series). Call Samtec.

Note: TLSD Series assemblies are non-standard, non-returnable.

TYPE	NO. PINS PER ROW	END OPTION	LENGTH	01	PLATING OPTION	OTHER OPTION
	-05, -08, -10, -12, -13, -15, -17, -20, -22, -25 (Call for other sizes)		- "XX.XX" = Assembled Length Assembled Length in INCHES (±1/16") 2 inches minimum		-L = 10µ" (0,25 µm) Gold on contact area	
		-S = Single End				
		-D = Double End				
					-N = Notch Polarization	
						-RW = Reverse Wiring Black wire opposite position #1.
						-SR = Strain Relief
						-RN1 = Reverse Notch End 1
						-RN2 = Reverse Notch End 2
					-P "XX" = Position Polarization Specify "XX" as position number. Same position will be polarized on both ends.	
						-B "XX" = Breakout Specify "XX" as number of conductors to be broken out. Breakout starts with Number 1 lead indicated by brown wire or red stripe. Shown on top side.
						-D "XX" = Daisy Chain Double Row Connectors Outer Most (End of assembly)
						-R = Reversed
						-M = Middle Reverse Requires -DXX
						-O = Outside Reverse Requires -DXX

TLSD = Socket Strip

RUGGEDIZED by SAMTEC

- Strain relief
- Optional polarization and polarizing key

Due to technical progress, all designs, specifications and components are subject to change without notice.

WWW.SAMTEC.COM