

Search Results

Evaluate

- FAQ's

Design a Solution

- Part Drawings
- PDF-Next Generat ..
- Specification Sheets
- PDF-TX6A 10Gig U ..

How to Buy

- Bill of Material
- Favorite Products List
- Locate Distributor

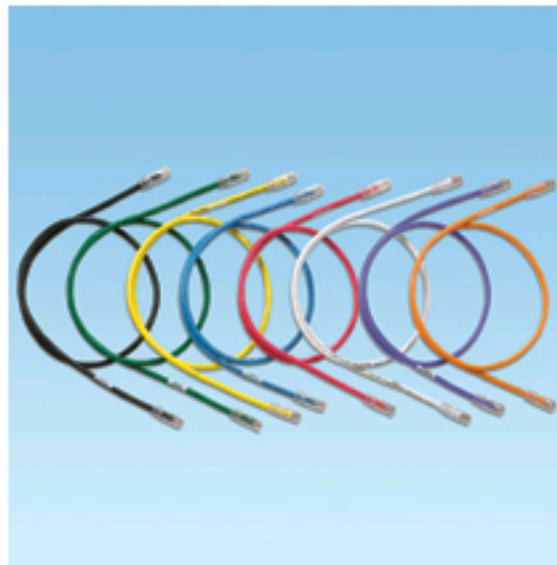
Home > Product On-Line Catalog > Search Results >

Current refinements (click ☐ to remove) Search Tips 

☒ Text Search: 'UTP6A1.5M'

Your search criteria matched only one product, shown below

UTP6A1.5M



- Exceed requirements of ANSI/TIA-568-C.2 Category 6A, IEEE 802.3an-2006, and ISO 11801 Class E_A channel standards
- Meet requirements of IEEE 802.3af and IEEE 802.3at for PoE applications
- Each patch cord is 100% performance tested and wired to T568B
- Constructed of TX6A™ 10Gig™ 24 AWG stranded copper cable (nominal cable diameter is 0.280 inches) and TX6™ PLUS Modular Plugs for superior performance
- Plug meets all applicable ANSI/TIA-968-A requirements and exceeds IEC 60603-7 specifications
- Slender strain relief boot provides easy access in high density applications
- Plug uses an integral pair manager to optimize performance and consistency by reducing untwisting of conductors within the plug
- Plug performance in center of TIA/EIA component range, ensuring interoperability and 10GBASE-T Ethernet channel performance
- Labels on patch cords provide identification of performance level, length, and quality control

number

- Patented tangle free latch prevents snags and provides easy release, saving time on frequent moves, adds, and changes
- Optional Patch Cord Color Bands snap on and off individual patch cables offering endless color-coding options

• Part Number	UTP6A1.5M
• RoHS Compliancy Status	Compliant
• Part Description	Category 6A, 10 Gb/s UTP patch cord with TX6™ PLUS Modular Plugs on each end.
• Product Type	Copper Patch Cord
• Color	Off White
• Length (ft.)	1.5
• Length (m)	4.92
• Boot Color	Clear
• Cable Color	Off White
• Cable Type	UTP
• CE Compliant	No
• Connector 1 Type	RJ45 8(8)
• Connector 2 Type	RJ45 8(8)
• Flammability Rating	CM
• Performance Level	Category 6A
• Pricing Description	Copper Patch Cord, Cat 6A, Off White UTP Cable, 1.5 Meter
• Termination End 1	Modular Plug
• Termination End 2	Modular Plug
• Wiring Scheme	T568B
• Min. Order UOM	PC
• Min. Order Qty.	1
• BOM Qty. (# of Pkgs.)	<input type="text" value="0"/>
• Add to Favorite Product List	<input type="checkbox"/>

Please [register](#) to utilize the 'Bill of Materials', 'Submit Quotes' and 'Favorite Product List' features.