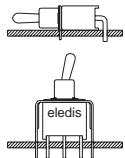




SERIES 1B

- Sealed miniature toggle switches



AGENCY APPROVALS



File N° E195524



File N° E195524

IP67

In conformity with:
• EN 60529: 1991
• IEC 529: 1989

CHARACTERISTICS

- Case and bushing in glass filled nylon with o-ring in the bushing for added seal.
- Many convenient options.

SPECIFICATIONS

Contact Rating: **S** (silver) - 5A with resistive load @ 125 VAC or 28 VDC - 2A with resistive load @ 250 VAC
A (gold) - 0.4 VA max @ 20 VAC or DC max
Electrical life: 50,000 make and break cycles at full load
Contact Resistance: 10 mΩ max. initial @ 2-4 VDC - 100 mA, for both silver and gold plated contacts
Insulation Resistance: 1000 MΩ min.
Dielectric Strength: 1500 VRMS @ sea level
Operating Temperature: -30°C to 85°C

MATERIALS

Case & bushing: Glass filled nylon 6/6, flame retardant, heat stabilized (UL94V-0)
Actuator: Black nylon-with internal o-ring seal std with all actuators
Switch support: Brass or steel, tin plated
Switch support retainer: Stainless steel
Terminal seal: Epoxy

HOW TO ORDER

1	B			-							E
N° OF POLES		ACTUATORS				TERMINATIONS				SEALING	
1	SPDT	N Round (std) N2 Short round ES ESD plastic toggle 6.70 mm ES4 ESD plastic toggle 10.70 mm				PC PCB W1 Wire wrap 19.05 mm W2 Wire wrap 24.48 mm W3 Wire wrap 10.80 mm W4 Wire wrap 26.97 mm ST Solder tag H9 90° horizontal H9S 90° horizontal snap-in V9 90° vertical V9S 90° vertical snap-in U2 U bracket 11.68 mm U2S U bracket snap-in 11.68 mm U3 U bracket 16.00 mm U3S U bracket snap-in 16.00 mm U4 U bracket 11.68 mm U4S U bracket snap-in 11.68 mm U5 U bracket 16.00 mm U5S U bracket snap-in 16.00 mm QC U bracket sna				E Seal (std)	
ELECTRICAL FUNCTIONS		BUSHING				QUICK CONNECT				STANDARD HARDWARE	
1	on	none	on		F1 Threaded standard	S Silver (std)	2 Nuts				
2	on	none	(on)		F4 Unthreaded Std	A Gold	1 Locking Ring				
3	on	off	on			G Gold on silver	1 Lockwasher				
4	(on)	off	(on)			T(◇) Tinned silver					
5	on	off	(on)			K(◇) Tinned gold					
6 (※)	on	on	on			V(◇) Tinned gold on silver					
7 (※)	(on)	on	(on)								
8 (※)	on	on	(on)								

(※) 3-way external wiring required - Please Enquire
(◇) Please enquire

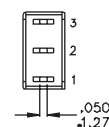
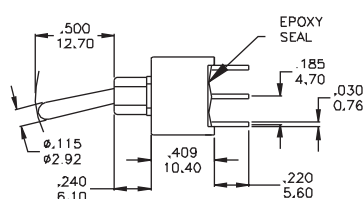
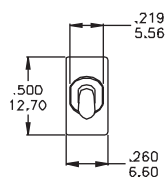
SERIES 1B

ELECTRICAL FUNCTIONS

DIMENSIONS

SPDT			
1	on	none	on
2	on	none	(on)
3	on	off	on
4	(on)	off	(on)
5	on	off	(on)
2 - 3	open	2 - 1	

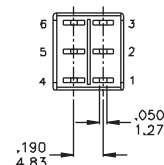
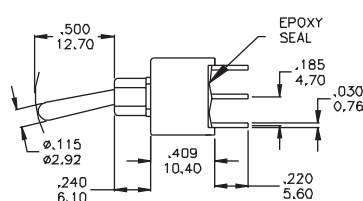
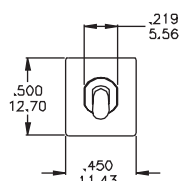
2 Comm.



Part N° shown: 1B11-NF4PCAE

DPDT			
1	on	none	on
2	on	none	(on)
3	on	off	on
4	(on)	off	(on)
5	on	off	(on)
6 (*)	on	on	on
7 (*)	(on)	on	(on)
8 (*)	on	on	(on)
2-3, 5-6	open	2-1, 5-4	

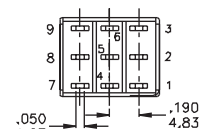
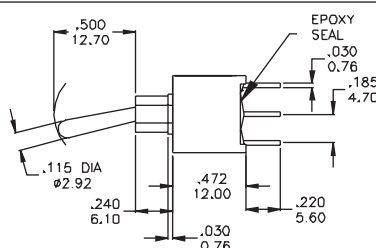
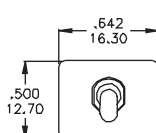
2 Comm. 5 Comm.



Part N° shown: 1B21-NF4PCAE

3PDT			
1	on	none	on
2	on	none	(on)
3	on	off	on
4	(on)	off	(on)
5	on	off	(on)
2-3, 5-6	open	2-1, 5-4	

2 Comm. 5 Comm. 8 Comm.

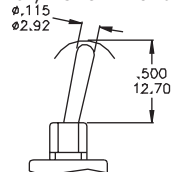


Part N° shown: 1B31-NF4PCAE

(*) See wiring for 3-Way Switching Functions pag. iii in the Technical Notations section

ACTUATORS

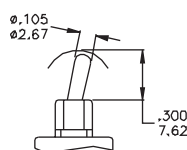
Standard when ordered with ST, PC terminations



Subtract 2.68 for F1 bushing

N

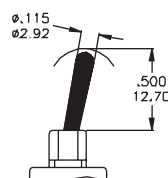
Standard when ordered with H9, V9, U2 terminations



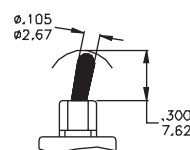
Subtract 2.68 for F1 bushing

N2

Antistatic Plastic Black Toggle



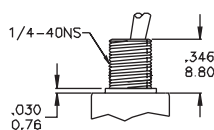
ES



ES4

Note: Static resistance 9000 VDC, between actuator and terminals.
 Not available with E1 conductive bushing

BUSHING



F1

Standard with PC, H9, V9, U terminations

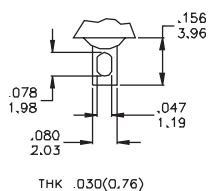


F4

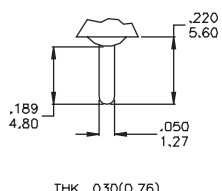


SERIES 1B

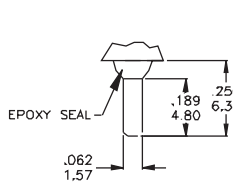
TERMINATIONS



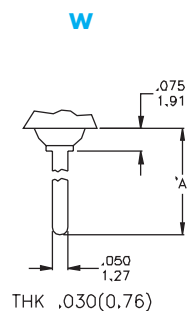
ST



PC



QC

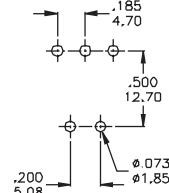
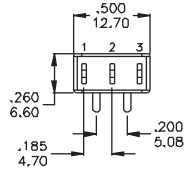
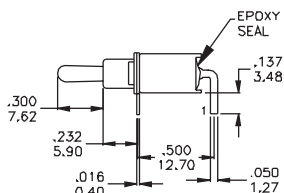
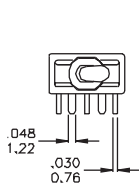


W

Dim. A

W1	.750 (19.05)
W2	.964 (24.48)
W3	.425 (10.80)
W4	1.062 (26.97)

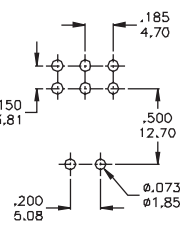
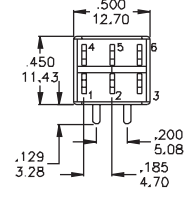
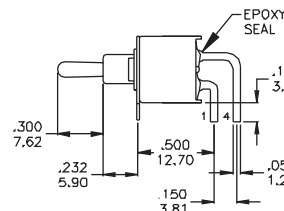
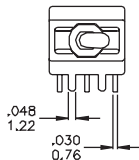
H9
SPDT



Part N° shown: 1B11-N2F4H9AE

P.C. LAYOUT

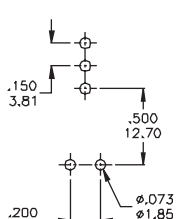
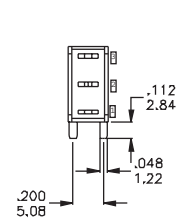
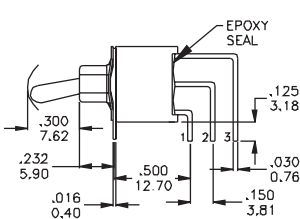
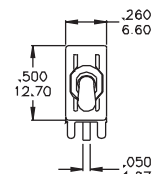
H9
DPDT



Part N° shown: 1B21-N2F4H9AE

P.C. LAYOUT

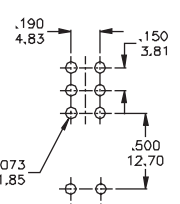
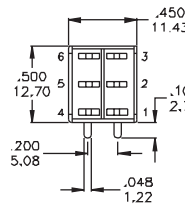
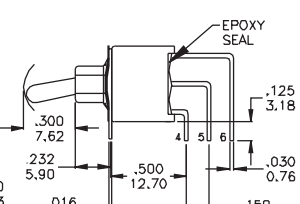
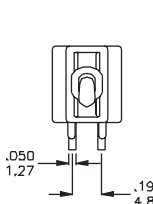
V9
SPDT



Part N° shown: 1B11-N2F4V9AE

P.C. LAYOUT

V9
DPDT

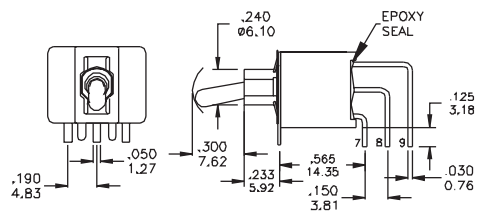


Part N° shown: 1B21-N2F4V9AE

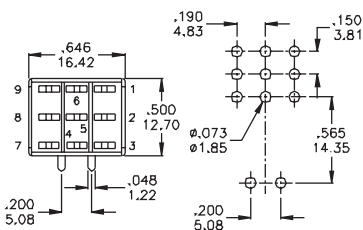
P.C. LAYOUT

SERIES 1B

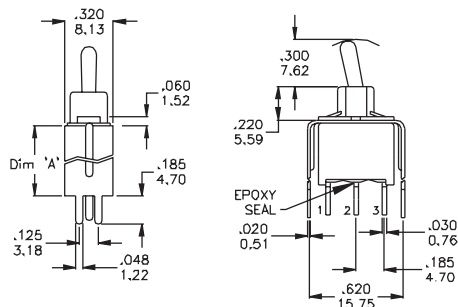
TERMINATIONS

V9
3PDT


P.C. LAYOUT

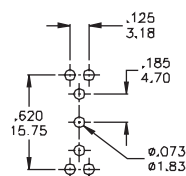


Part N° shown: 1B31-N2F4V9AE

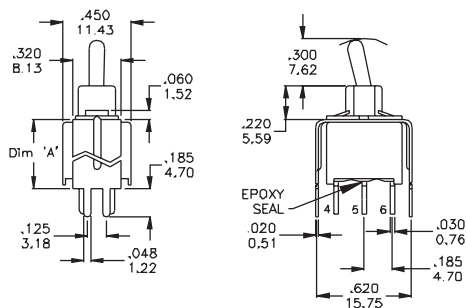
U2 U3
SPDT


P.C. LAYOUT

Dim. A	
U2	.460 (11.68)
U3	.630 (16.00)

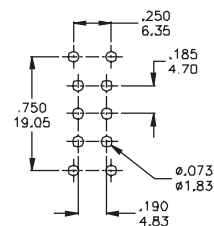


Part N° shown: 1B11-N2F4U_AE

U4 U5
SPDT


P.C. LAYOUT

Dim. A	
U4	.460 (11.68)
U5	.630 (16.00)



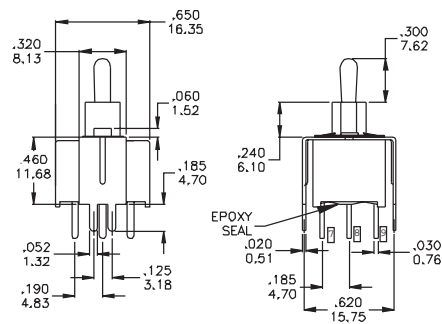
Part N° shown: 1B11-N2F4U_AE



SERIES 1B

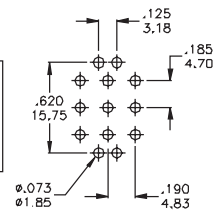
TERMINATIONS

U4 U5
3PDT



Dim. A	
U4	.460 (11.68)
U5	.630 (16.00)

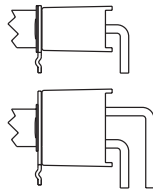
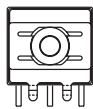
P.C. LAYOUT



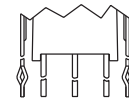
Part N° shown: 1B31-N2F4U_AE

Snap-in termination options

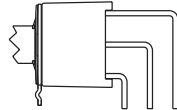
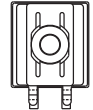
H9S



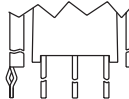
U2S
U3S



V9S



U4S
U5S



H9S, V9S, U2S, U3S, U4S, U5S have the same P.C layout but are supplied with snap-in bracket to grip onto the PCB



SERIES 1B

CONTACT MATERIALS

CONTACT RATINGS

- S (std)

Moving Contacts: coin silver

Terminals: copper alloy, silver plated

Rating: 2 Amps with resistive load @ 250 VAC
5 Amps with resistive load @ 125 VAC or 28 VDC
- A

Moving Contacts: copper alloy with gold plating over nickel plating

Terminals: copper alloy with gold plating over nickel plating

Rating: 0.4 Volts/Amps max @ 20 Volts max (AC or DC)
- G

Moving Contacts: gold plating over silver

End Terminals: gold plating over silver

Center Terminals: gold plating over copper alloy, silver plated

Note: G option used for either "high" (2 Amps @ 250 VAC) or "low" (0.4 Volts/Amps max) contact rating (one exclude the other)

PACKAGING

MARKING
(on products)

LABELLING
(on packaging)

Transparent Trays 15x21x4 cm



Qty per tray: (ST, PC Terminals)

Series 1B1x 200 pcs

1B2x 100 pcs

1B3x 100 pcs

The switches are individually marked with the following information:

- Side 1

TRADE MARK

SERIES AND MODEL

DATE CODE
- Side 2

RATING

CONTACTS

Note: Not all information may be available on some products.

The label on each tray gives full information on the products contained.

P/N:

EL.FNC.:

Q.TY:

DATE CODE:

Made in Taiwan

Remarks

A Bar code indicating Model, Quantity, Date Code enables easy traceability.