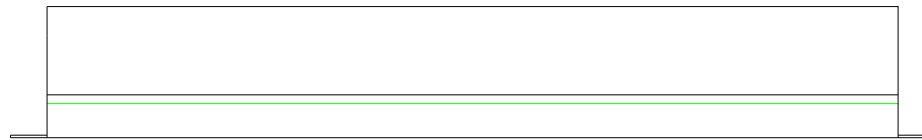
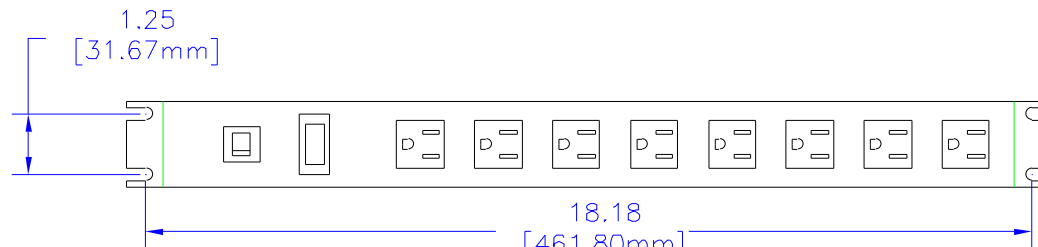


NOTES

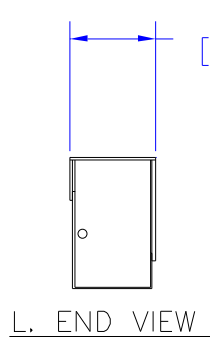
DESIGNED FOR POWER DISTRIBUTION FROM FRONT OF UNIT.
TOUGH STEEL CASE AVAILABLE IN ASA 61 GRAY OR BLACK POWDER PAINT.
HEAVY-DUTY POWER CORD - 14/3 SJTW FOR EXTREME TEMPERATURE RANGES. COMES IN 6' OR 15' LONG.
INTEGRAL MOLDED PLUG AVAILABLE IN STRAIGHT BLADE (NEMA 5-15P) OR TWIST-LOCK (NEMA L5-15P) CONFIGURATIONS.
COMES WITH RED PILOT LIGHT TO INDICATE POWER ON.
INCLUDES 15A, 125VAC CIRCUIT BREAKER TO PREVENT LINE OVERLOAD.
CSA CERTIFIED, UL RECONIZED-UNDER THE COMPONENT PROGRAM OF UL



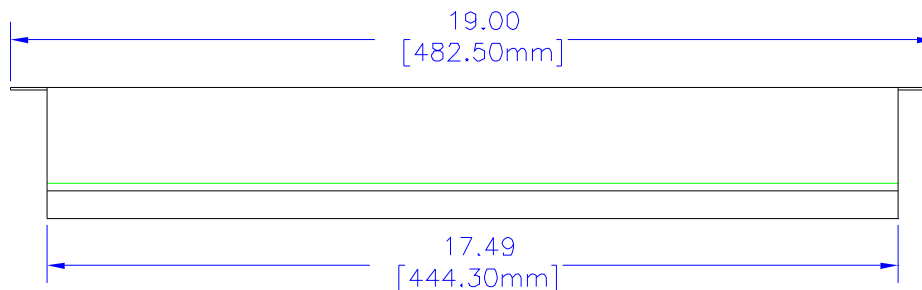
SIDE VIEW



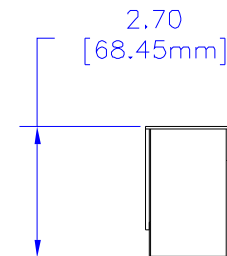
TOP VIEW



L. END VIEW



SIDE VIEW



R. END VIEW



BOTTOM VIEW

*SEE CATALOG FOR THE COMPLETE PART NUMBER BASED ON THE OPTIONS LISTED IN THE NOTE SECTION

UNLESS OTHERWISE SPECIFIED
DIMENSIONS ARE IN INCHES
X +/- .1
XX +/- .02
XXX +/- .015
RZTS +/- .005
ANGLES +/- .5 DEG.
NOTE
HAMMOND CLAIMS PROPRIETARY RIGHTS TO THE MATERIAL IN THIS DRAWING. IT IS INTENDED TO BE USED AS A REFERENCE FOR ENGINEERING INFORMATION ONLY. THIS INFORMATION MAY NOT BE USED TO MANUFACTURE PRODUCT WITHOUT WRITTEN PERMISSION FROM HAMMOND MANUFACTURING.



HAMMOND
MANUFACTURING

WEB: WWW.HAMMONDMFG.COM

TITLE
HAMMOND RACK MOUNT
POWER PANELS
DRAWN BY MJM DATE 02/09/01
SCALE PAGE 1 OF 1
PART NUMBER 1582T8****

Mouser Electronics

Authorized Distributor

Click to View Pricing, Inventory, Delivery & Lifecycle Information:

Hammond:

[1582T8E1BK](#) [1582T8D1](#) [1582T8C1](#) [1582T8B1](#) [1582T8A1](#) [1582T8D1BK](#) [1582T8C1BK](#) [1582T8C20BK](#)
[1582T8A1BK](#) [1582T8F20BK](#) [1582T8B1BK](#) [1583H6F20BK](#)