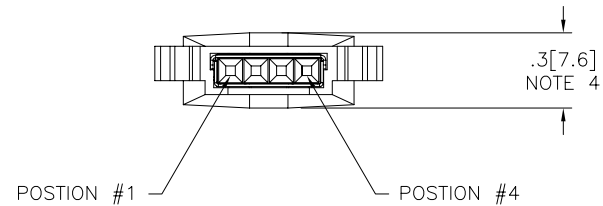
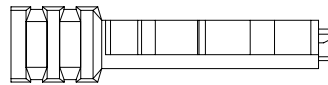
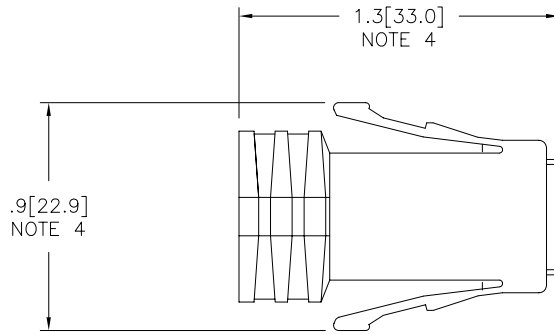




FCIconnect.com

Copyright FCI

PRODUCT NUMBER  
SEE SHT. 2



mat'l. code				surface	tolerance	projection	product family
				ISO 1302 ✓	ISO 406 ISO 1101		LATCH-N-LOK
ltr	ecn no	dr	date	tolerances unless otherwise specified		 INCH/MM scale 1:1	title
C	V91512	CGC	8/10/99	angles	linear .XX±.01/.3		1X4 LNL 360° SHIELDED
D	V91916	RGD	10/7/99		linear .XXX±.005/.13		PLUG CONN. KIT W/O PV'S
E	V92065	RGD	10/29/99	0°±2°	.XXXX±.0020/.051		
F	V01017	TFG	5/15/00	dr	M.HERNANDEZ	12/03/04	dwg no
G	V01093	TFG	7/6/00	enr	M. BARRIOS	12/03/04	sheet 1 of 3 size
H	M04-0229	MHT	12/03/04	chr	M. BARRIOS	12/03/04	74901 A3
J	M06-0365	AGS	9/20/06	app	M. BARRIOS	12/03/04	type Product Customer Drawing
sheet	revision	J	J	J			
index	sheet	1	2	3			

form: A3

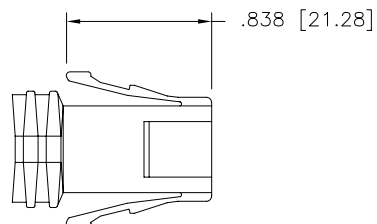
74901-6UVXLF

X EXTENDED LATCH OPTION

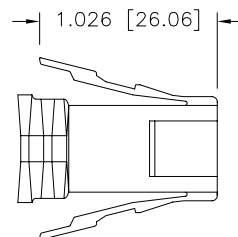
U	COLOR	
01	LT-GRAY	OBS
02	OFF WHITE	
03	DK- GRAY	OBS
04	BLACK	
05	SLATE GRAY	OBS
07	SILVER GRAY	
08	PEARL WHITE	OBS
09	PEBBLE GRAY	

### EXAMPLE

74901-607XLF: IS A 1x4 REAR EXIT PLUG  
IN SILVER GRAY WITH A CABLE EXIT  
HOLE SIZE OF .200 [5.08] CABLE RANGE ,  
ALSO WITH THE EXTENDED LATCH OPTION.

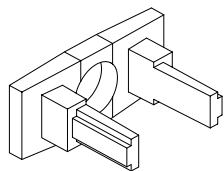


1x4 STANDARD

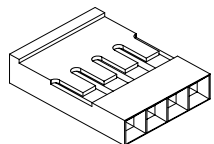


1x4 EXTENDED LATCH

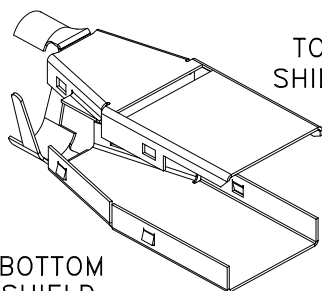
mat'l. code				surface ISO 1302 ✓	tolerance ISO 406 ISO 1101	projection INCH/MM	product family LATCH-N-LOK
ltr	ecr	no	dr	date	tolerances unless otherwise specified	scale 1:1 FCI	title
J					angles linear .XX±.01/.3		1X4 LNL 360° SHIELDED
					0'±2' .xxx±.005/.13		PLUG CONN. KIT W/O PV'S
					.xxx±.0020/.051		dwg no sheet 2 of 3 size
				dr	M.HERNANDEZ 12/03/04		74901 A3
				enr	M. BARRIOS 12/03/04		
				chr	M. BARRIOS 12/03/04		
				app	M. BARRIOS 12/03/04		
sheet index	revision sheet						type Product Customer Drawing



REAR CAP

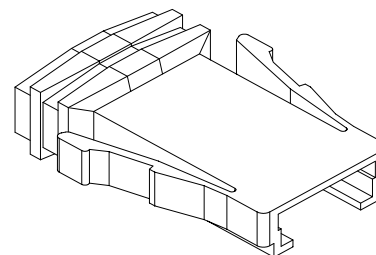


MINI  
LATCH  
HOUSING



TOP  
SHIELD

BOTTOM  
SHIELD



PLUG FRONT

NOTES:

1. EACH KIT CONTAINS ONE EACH OF THE FOLLOWING COMPONENTS  
LATCH-N-LOK PLUG  
LATCH-N-LOK END CAP  
MINI LATCH HOUSING  
360° SHIELD CANS.
2. COMPONENTS ARE BULK PACKAGED WITH 100 pcs. OF A COMPONENT PER BAG. PVC'S MUST BE ORDERED SEPARATELY.
3. MATERIALS USED: PLUGS AND CAPS ARE MOLDED IN POLYCARBONATE. THE MINI LATCH HOUSING ARE MOLDED IN NYLON. COLOR IS BLACK. THE SHIELD CAN IS 3/4 HARD BRASS PLATED WITH 2.5um MIN. BRIGHT TIN. 1.0um MIN. NICKEL UNDERPLATE.
- ④ DIMENSIONS ARE APPROXIMATE AND REFLECT PLUG IN UNLATCHED STATE.
5. PART NUMBERS WITH LF IN THE END ARE LEAD FREE.
6. THIS PRODUCT MEETS EUROPEAN UNION DIRECTIVES AND OTHER COUNTRY REGULATION AS DESCRIBED IN GS-22-008.



FCIconnect.com

Copyright FCI

mat'l. code				surface ISO 1302 ✓	tolerance ISO 406 ISO 1101	projection INCH/MM	product family LATCH-N-LOK
ltr	ecn	no	dr	date	tolerances unless otherwise specified	 INCH/MM scale 1:1 	title
J					angles linear .XX±.01/.3 0°±2' .xxx±.005/.13 .xxxx±.0020/.051		1X4 LNL 360° SHIELDED PLUG CONN. KIT W/O PV'S
					dr M.HERNANDEZ 12/03/04		dwg no sheet 3 of 3 size
					enr M. BARRIOS 12/03/04		74901 A3
					chr M. BARRIOS 12/03/04		type Product Customer Drawing
					appd M. BARRIOS 12/03/04		
sheet index	revision sheet						