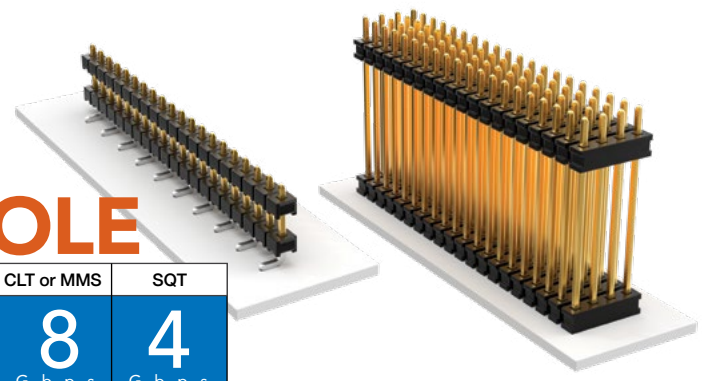


# SMT & THROUGH-HOLE BOARD STACKERS

(2.00 mm) .0787" PITCH • TW SERIES

CLT or MMS	SQT
8	4
G b p s	G b p s



**TW**  
**Board Mates:**  
 CLT, SQT, SQW, ESQT,  
 TLE, SMM, MMS

**Cable Mates:**  
 TCS D

## SPECIFICATIONS

**Insulator Material:**  
 Black Liquid Crystal Polymer  
**Terminal Material:**  
 Phosphor Bronze  
**Plating:**  
 Sn or Au over  
 50 μ" (1.27 μm) Ni  
**Current Rating:**  
 TW-SM = 4.9 A per pin  
 (2 pins powered)  
 TW-TH = 5.2 A per pin  
 (2 pins powered)  
**Operating Temp Range:**  
 -55 °C to +105 °C with Tin;  
 -55 °C to +125 °C with Gold

## PROCESSING

**Lead-Free Solderable:**  
 Yes  
**SMT Lead Coplanarity:**  
 (0.15 mm) .006" max\*  
 \*(.004" stencil solution  
 may be available; contact  
 ipg@samtec.com)

## ALSO AVAILABLE

MOQ Required

Other Platings  
 End shrouds with or  
 without guide post

**Notes:**  
 For added mechanical  
 stability, Samtec recommends  
 mechanical board spacers be  
 used in applications with gold or  
 selective gold plated connectors.  
 Contact ipg@samtec.com for  
 more information.

This Series is non-standard,  
 non-returnable.

TW	NO. PINS PER ROW	LEAD STYLE	PLATING OPTION	ROW OPTION	STACKER HEIGHT	SM	OTHER OPTION
----	------------------	------------	----------------	------------	----------------	----	--------------

02  
thru  
36

Specify  
LEAD  
STYLE  
from  
chart

-F  
= Gold flash  
on post,  
Matte Tin  
on tail

-S  
= Single  
Row

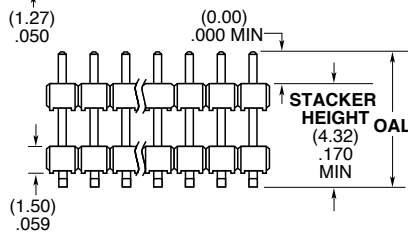
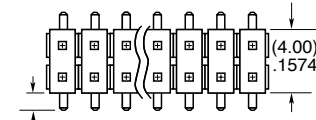
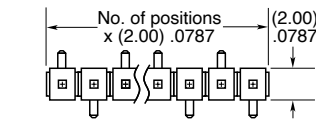
-"XXX"  
= Stacker  
Height  
in inches  
(0.13 mm)  
.005"  
increments

-"XXX"  
= Polarized Position

-A  
= Alignment Pin  
(Metal or plastic  
at Samtec discretion)  
(4.83 mm) .190" min.  
board space  
(-D only)

-P  
= Pick & Place Pad  
(1.91 mm) .075" min.  
post height  
(04-36 only)

-"X"R  
Specify "T" for  
Tape & Reel  
Specify "F" for  
Full Reel Tape & Reel  
(must order max.  
quantity per reel;  
contact Samtec for  
quantity breaks)  
(-07 lead style N/A)  
(-06 lead style with  
-P option N/A  
as standard)

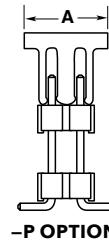
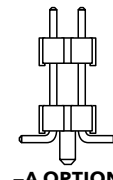


-L  
= 10 μ"  
(0.25 μm)  
Gold on  
post,  
Matte Tin  
on tail

-T  
= Matte  
Tin

ROW OPTION	A
-S	(5.08) .200
-D	(6.35) .250

LEAD STYLE	OAL
-02	(7.85) .309
-03	(11.86) .467
-04	(12.37) .487
-06	(15.37) .605
-07	(17.35) .683
-09	(9.86) .388



TW	NO. PINS PER ROW	LEAD STYLE	PLATING OPTION	ROW OPTION	STACKER HEIGHT	TAIL SPEC
----	------------------	------------	----------------	------------	----------------	-----------

02 thru 50

Specify  
LEAD  
STYLE  
from  
chart

-F  
= Gold flash  
on post,  
Matte Tin  
on tail

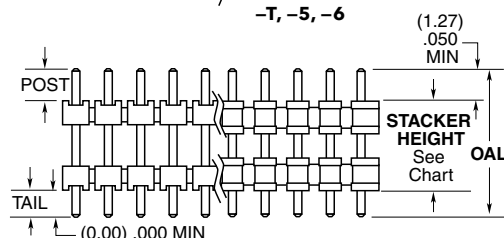
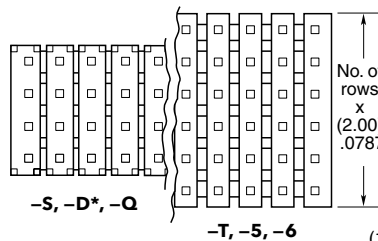
-S  
= Single Row

-"XXX"  
= Stacker Height  
in inches  
(0.13 mm) .005"  
increments  
Example: -250  
= (6.35 mm)  
.250"

-"XXX"  
= Tail Length  
in inches  
(0.13 mm) .005"  
increments  
Example: -150  
= (3.81 mm)  
.150"

Example: -150  
= (3.81 mm)  
.150"

-"XXX"  
= Polarized  
Position  
(Specify  
position to  
be removed)



-L  
= 10 μ"  
(0.25 μm)  
Gold on  
post,  
Matte Tin  
on tail

-T  
= Matte Tin

-D  
= Double Row

-T  
= Triple Row

-Q  
= Four Row

-5  
= Five Row

-6  
= Six Row

LEAD STYLE	OAL
-01	(8.20) .323
-02	(9.60) .377
-03	(13.60) .535
-04	(14.10) .555
-05	(15.10) .594
-06	(17.10) .673
-07	(19.10) .751
-08*	(21.10) .830
-09	(11.60) .456
-10	(15.60) .614
-11	(10.08) .397
-12*	(28.19) 1.110

ROW OPTION	STACKER HEIGHT
-S, -D*, -Q	(3.05) .120 MIN
-T, -5, -6	(4.06) .160 MIN

\*-D with stacker height  
greater than (4.06 mm) .160"  
will not have standoffs.

\*Style -08 & -12 = S & D only