

LEAD FREE PRODUCT NO.

10008166-X01LF



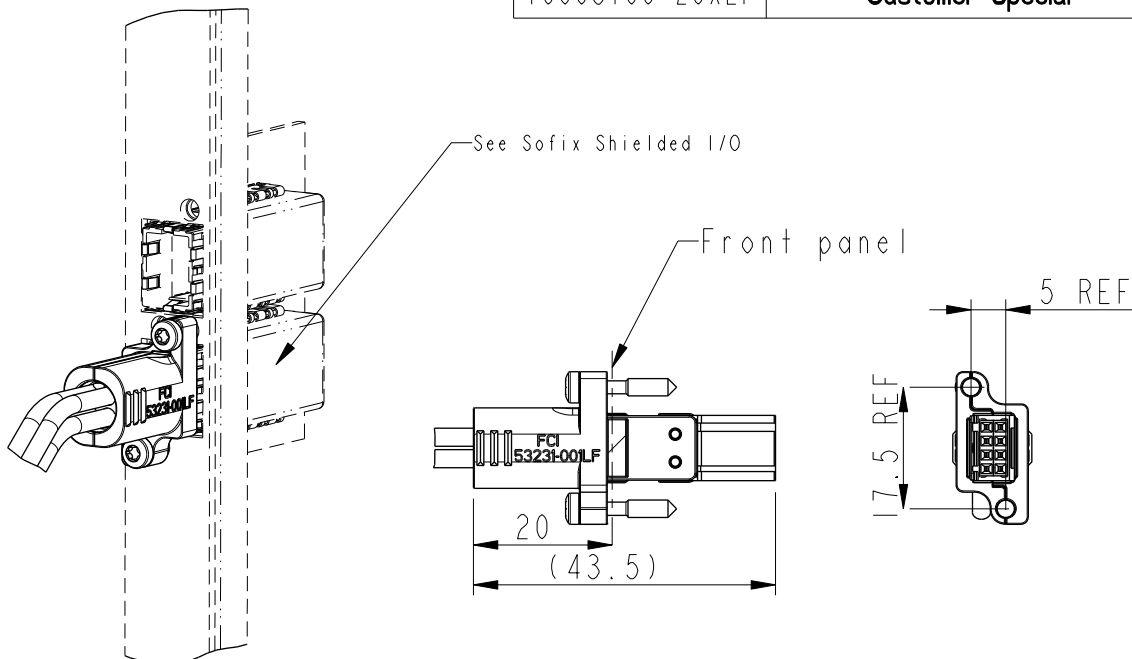
## Performance level

10008166-10XLF

Telcordia CO.

10008166-20XLF

Customer Special




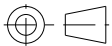


PRODUCT SPECIFICATION: GS-12-308  
 PACKAGING SPECIFICATION: EUR-14-008  
 APPLICATION SPECIFICATION: GS-20-030

## MATERIAL:

- 1 WAFER.....30% GLASS FILLED LCP
- 2 SHROUD.....30% GLASS FILLED POLYAMIDE  
FLAME RETARDENT ACC. TO UL-94-V-0
- 3 COVER.....ZINC ALLOY
- 4 TERMINAL.....TINBRONZE
- 5 FERRULE.....TINBRONZE
- 6 SCREW.....STEEL
- 7 CABLE HOLDER.....TPE, SHORE 50D

## 8-ROHS INFORMATIONS:

- This "LF" product meets European Union Directives and other country regulations as described in GS-22-008.
- This product is not intended to be exposed to a manufacturing solder process
- Packaging spec: See GS-14-920

spec ref		RELEASED		rev	ecn no	dr	date		
tolerance std		TOLERANCES UNLESS OTHERWISE SPECIFIED		H	LS07-0255	JTA	2007/11/12		
ISO 406				-	-	-	-		
ISO 1101				C	LS4129	JTA	2004/12/15		
surface 				D	LS05-0015	JTA	2005/01/21		
		E	LS05-0102	JTA	2005/11/12				
		F	LS06-0107	LGO	2006/09/07				
		G	LS06-0143	LGO	2006/09/25				
ISO 1302		linear	0.X	±0.3					
			0.XX	±0.10					
			0.XXX	±0.050					
		angular	0°	±2°					
dr	P.Claes	2002/08/06		projection		mm		size	scale
eng	P.Claes	2002/08/06						A4	1:1
chr	W.Panis	2002/08/26						ecn no	LS07-0255
appr	W.Panis	2002/08/26		product family		METRAL SOFIX		rel level	Released
		title				dwg no			rev
		SHIELDED SIGNAL CABLE CONNECTOR				10008166			H
		SOLDERED TERMINALS							
www.fci.com		cat. no.		Product - Customer Drw				sheet 1 of 3	

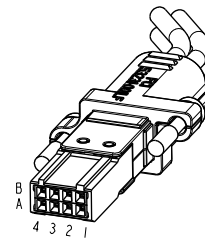
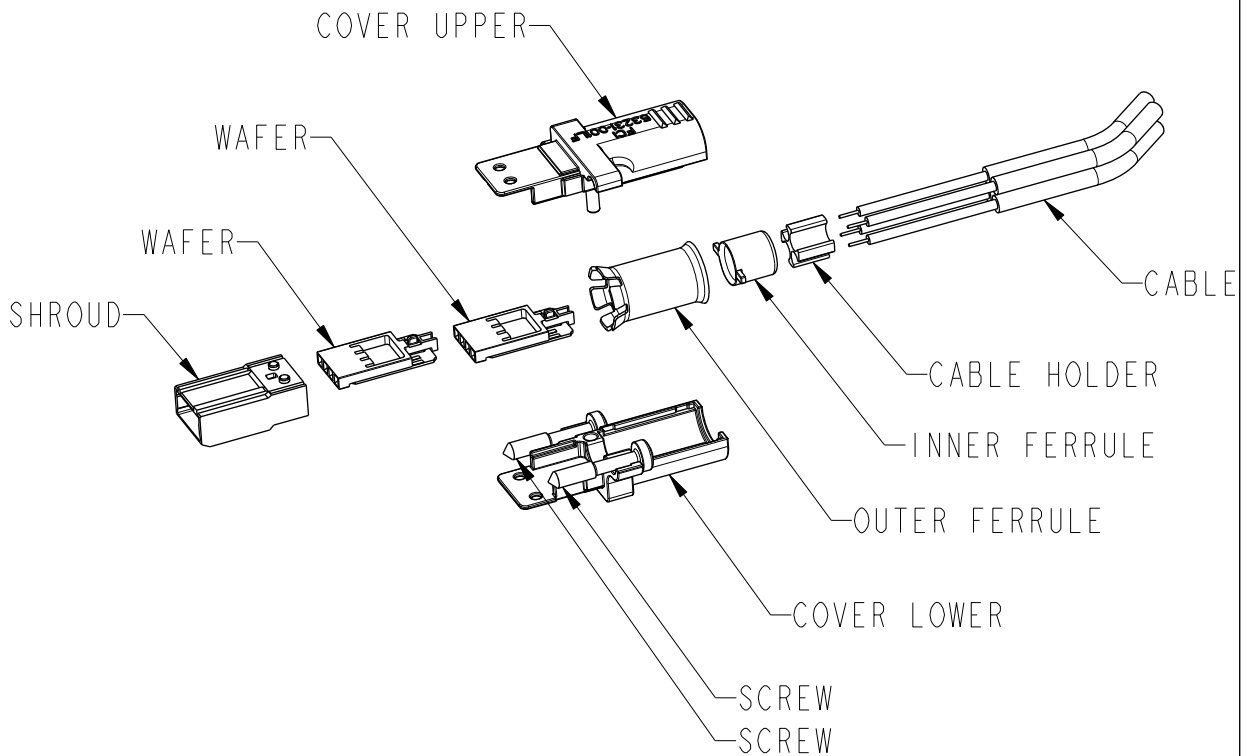
PrdF File - REV C - 2009-06-09



Copyright FCI.



Copyright FCI.



spec ref	RELEASED		
tolerance std	TOLERANCES UNLESS OTHERWISE SPECIFIED		
ISO 406			
ISO 1101			
surface $\sqrt{0.8}$	linear	0.X	$\pm 0.3$
		0.XX	$\pm 0.10$
		0.XXX	$\pm 0.050$
	angular	0°	$\pm 2^\circ$
ISO 1302			

dr	P.Claes	2002/08/06	<div>projection</div> <div></div>	<div>mm</div> <div></div>	size	A4	scale	1:1
eng	P.Claes	2002/08/06			ecn no	LS07-0255		
chr	W.Panis	2002/08/26			rel level	Released		
appr	W.Panis	2002/08/26	product family		METRAL SOFIX			
	title	SHIELDED SIGNAL CABLE CONNECTOR			dwg no	10008166		rev
		SOLDERED TERMINALS						H
www.fci.com	cat. no.		Product - Customer Drw				sheet 2 of 3	

Profile File - REV C - 2009-06-09

LEAD-FREE PRODUCTS: (see note 8)

**Kit: 10008166-X01LF**

COMPONENTS	QTY
COVER UPPER	1
COVER LOWER	1
WAFER	2
FERRULE OUTER	1
FERRULE INNER	1
SCREW	2
SHROUD	1
CABLE HOLDER	1




Dimension with oval around are critical dimensions including any attached geometrical tolerance. Other features or stand-alone geometrical tolerances being critical have a note "CRITICAL FEATURE" below the item

A symbol  (x: drawing current revision) will be next to any dimension, view or note which has been modified with the current drawing revision



Copyright FCI.

spec ref	RELEASED		
tolerance std	TOLERANCES UNLESS OTHERWISE SPECIFIED		
ISO 406 ISO 1101			
surface  ISO 1302	linear	0.X	$\pm 0.3$
		0.XX	$\pm 0.10$
		0.XXX	$\pm 0.050$
	angular	0°	$\pm 2^\circ$

dr	P.Claes	2002/08/06	<div>projection</div> <div></div>	<div>mm</div> <div></div>	size	A4	scale	1:1			
eng	P.Claes	2002/08/06									
chr	W.Panis	2002/08/26									
appr	W.Panis	2002/08/26	product family		METRAL SOFIX		ecn no	LS07-0255			
					rel level		Released				
	title	SHIELDED SIGNAL CABLE CONNECTOR					dwg no	10008166		rev	
		SOLDERED TERMINALS									
www.fci.com	cat. no.		Product - Customer Drw					sheet 3 of 3			

Print File - REV C - 2009-06-09