

A technical drawing showing a bolt and a nut. The bolt is positioned above the nut. The bolt has a hexagonal head with a central hole and a threaded shank. The nut is a hexagonal block with a central threaded hole. Both components are shown in a perspective view.

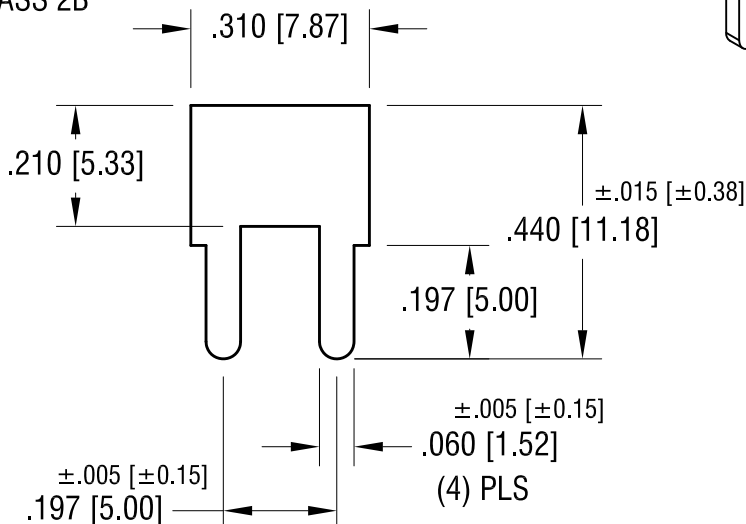
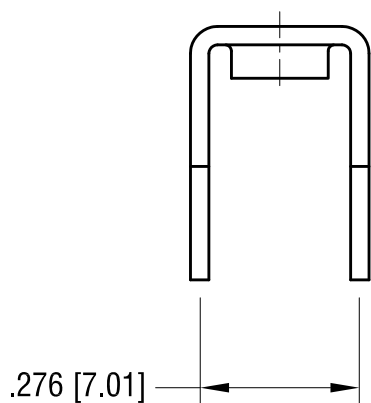
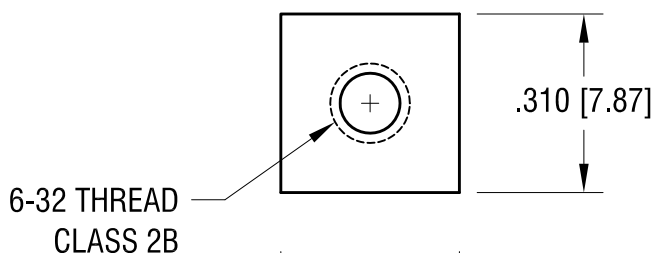
.197 [5.00]

.276 [7.01]

±.002 [±0.05]

.073 [1.85] DIA.

HOLE (4) PLS



MAT'L - BRASS, NICKEL PLATE

10.15.09	CHANGE AS PER ECN 09-148	E
12.31.07	CHANGE AS PER ECN 07-104	D
DATE	DESCRIPTION	REV.

<h1>KEYSTONE ELECTRONICS CORP.</h1> <p>www.keyelco.com • ASTORIA, N.Y. 11105-2017 • Tel (718) 956-8900</p>			
PART NAME <h2>PC SCREW TERMINAL</h2>			
MATERIAL <h2>AS NOTED</h2>			
FINISH <h2>AS NOTED</h2>		DRN BY <h2>BOONE</h2>	DATE <h2>5.31.91</h2>
		APP'D <h2>LN</h2>	SCALE <h2>3X</h2>
TOLERANCES DECIMAL $\pm .010$ [± 0.25] ANGULAR $\pm 1^\circ$ UNLESS OTHERWISE SPECIFIED	CODE <h2>C</h2>	DWG NO. <h1>8191</h1>	