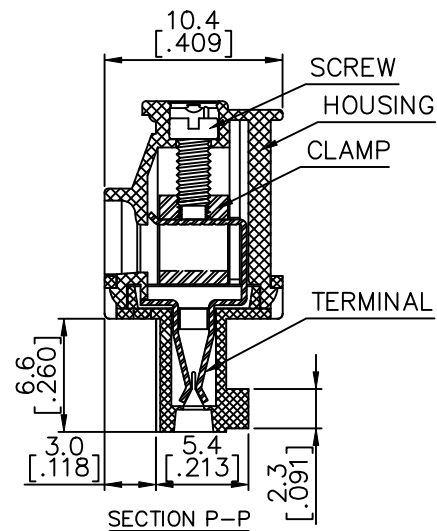
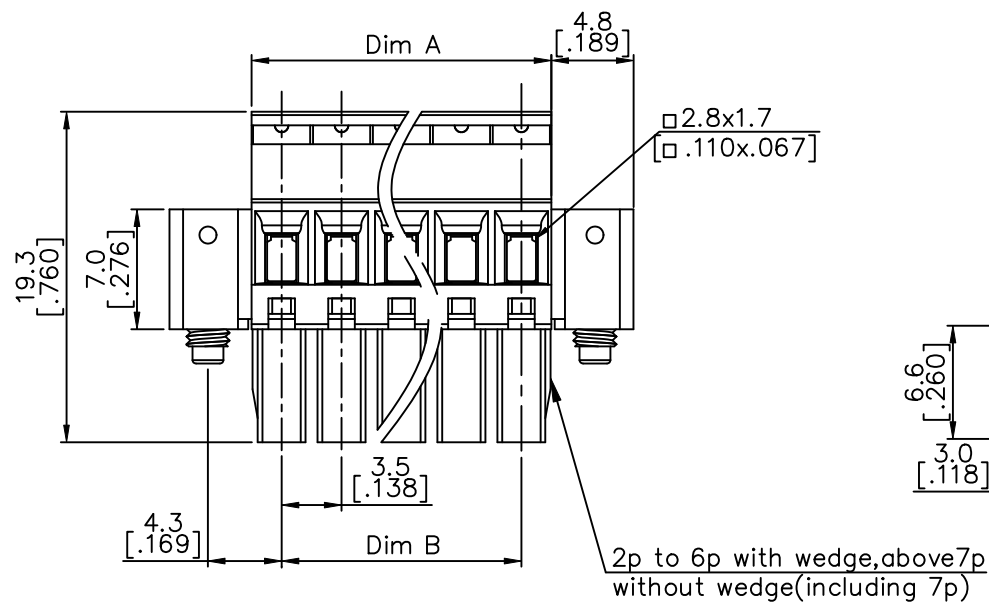
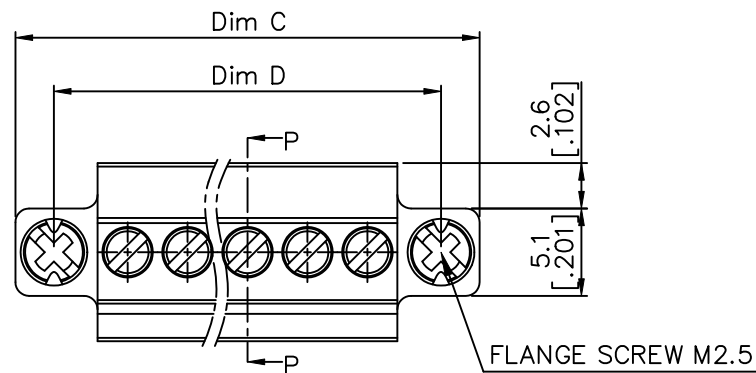


Printed: Sep 23, 2011

PRODUCT NUMBER	SERIES NAME	PITCH
20020011-CXXXXXXLF	02-350	3.50 mm



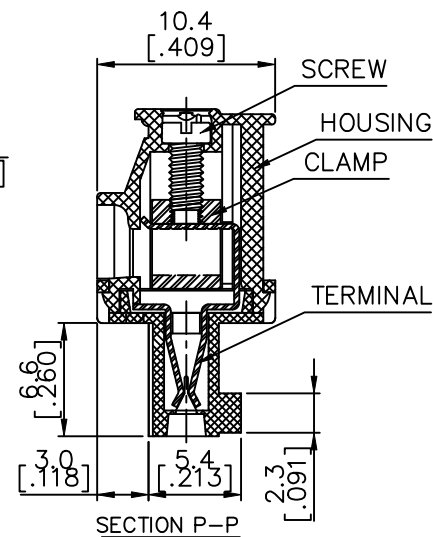
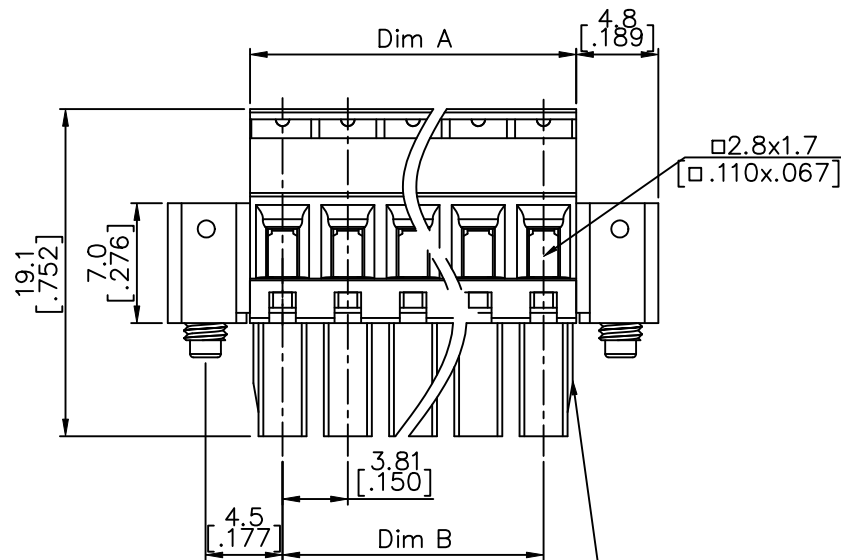
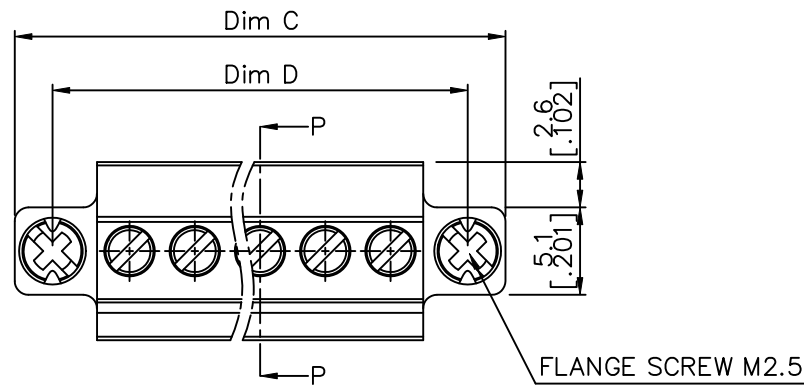
N = Number of poles

Dim A	$N \times 3.5 [.138]$
Dim B	$(N-1) \times 3.5 [.138]$
Dim C	$N \times 3.5 [.138] + 9.6 [.378]$
Dim D	$(N-1) \times 3.5 [.138] + 8.6 [.339]$

poles	Tolerance
2-4p	$\pm 0.10 [.004]$
5-7p	$\pm 0.15 [.006]$
8-12p	$\pm 0.20 [.008]$
13-18p	$\pm 0.25 [.010]$
19-24p	$\pm 0.30 [.012]$

mat'l. code		surface ASME Y14.5 ✓	tolerance ASME Y14.5	projection MM [INCH]	product family TERMINAL BLOCK
ltr	ecn no	dr	date	tolerances unless otherwise specified	title TERMINAL BLOCK PLUGGABLE PLUG, BACK SIDE HOOK, W/FLANGE
E				angles X $\pm$ 1°	sheet 2 of 5 size
				linear X.XX $\pm$ 0.1	20020011 A4
		dr	WENDY CHEN	051810	type CUSTOMER Drawing
		enr	JASON HSU	051810	
		chr	GARY HSIEH	051810	
		appd	JOSEPH HSIA	051810	
sheet index	revision sheet				

PRODUCT NUMBER	SERIES NAME	PITCH
20020011-DXXXXXXLF	02-381	3.81 mm



N = Number of poles

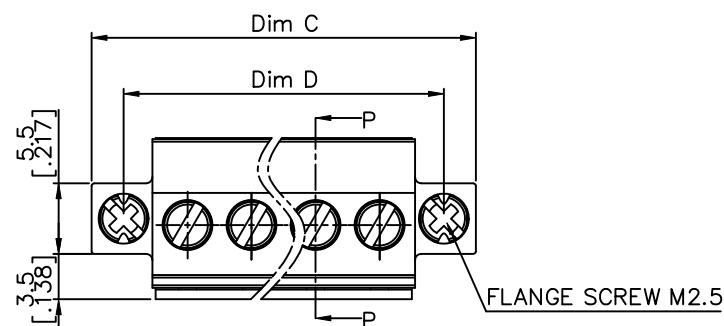
Dim A	$N \times 3.81 [.150]$
Dim B	$(N-1) \times 3.81 [.150]$
Dim C	$N \times 3.81 [.150] + 9.6 [.378]$
Dim D	$(N-1) \times 3.81 [.150] + 9.0 [.354]$

poles	Tolerance
2-6P	$\pm 0.15 [.006]$
7-12p	$\pm 0.20 [.008]$
13-17p	$\pm 0.25 [.010]$
18-24p	$\pm 0.30 [.012]$

2p to 6p with wedge, above 7p without wedge (including 7p)

mat'l. code		surface ASME Y14.5 ✓	tolerance ASME Y14.5	projection MM INCH	product family TERMINAL BLOCK
ltr	ecn no	dr	date	tolerances unless otherwise specified	title TERMINAL BLOCK PLUGGABLE PLUG, BACK SIDE HOOK, W/FLANGE
E				angles linear X°±1°	scale sheet 3 of 5 size
				dr WENDY CHEN 051810	dwg no 20020011 A4
				enr JASON HSU 051810	type CUSTOMER Drawing
				chr GARY HSIEH 051810	
				appd JOSEPH HSIA 051810	
sheet index	revision sheet				

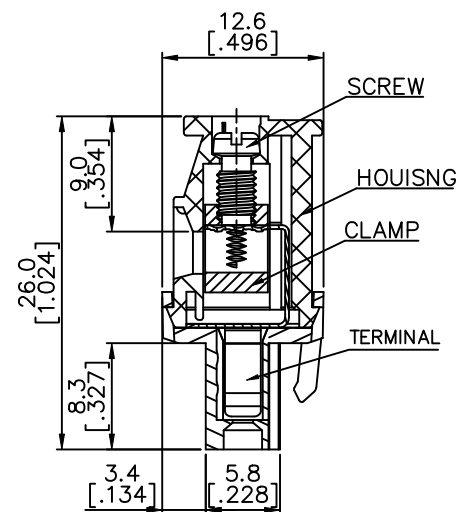
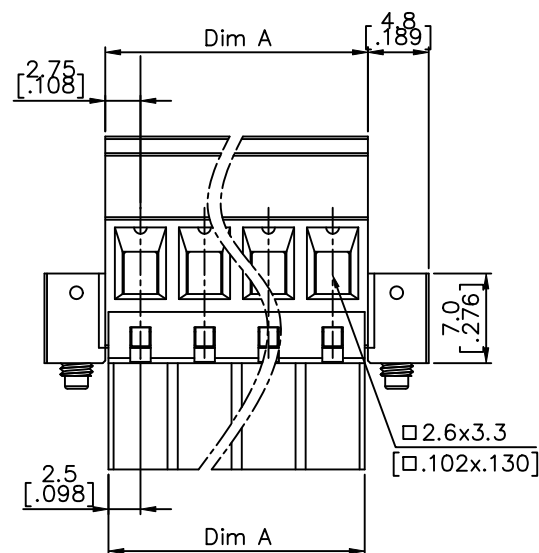
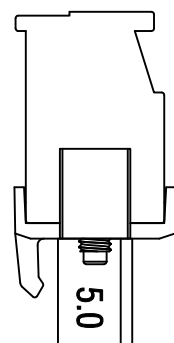
PRODUCT NUMBER	SERIES NAME	PITCH
20020011-GXXXXXXLF	02-500	5.00 mm



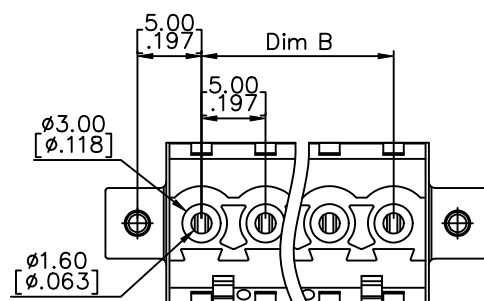
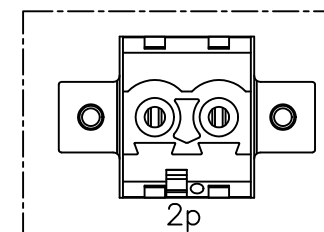
N = Number of poles

Dim A	$N \times 5.0[.197] + 0.5[.020]$
Dim B	$(N-1) \times 5.0[.197]$
Dim C	$N \times 5.0[.197] + 10.0[.394]$
Dim D	$(N+1) \times 5.0[.197]$

poles	Tolerance
2-6p	$\pm 0.15[.006]$
7-12p	$\pm 0.20[.008]$
13-18p	$\pm 0.30[.012]$
19-24p	$\pm 0.40[.016]$

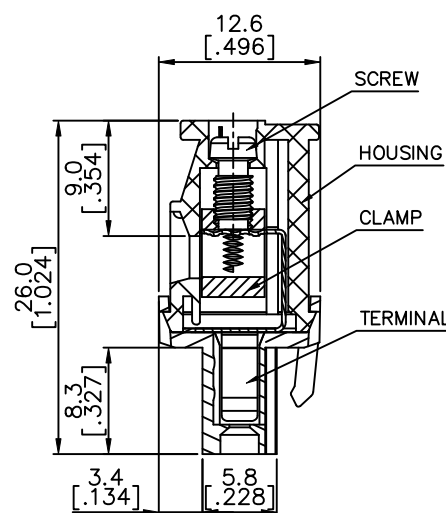
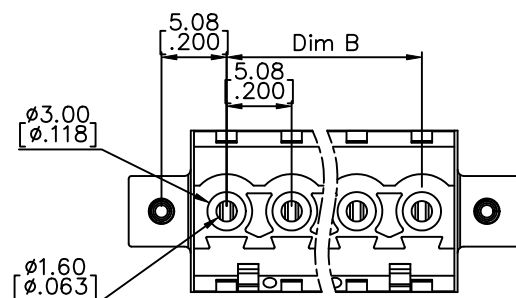
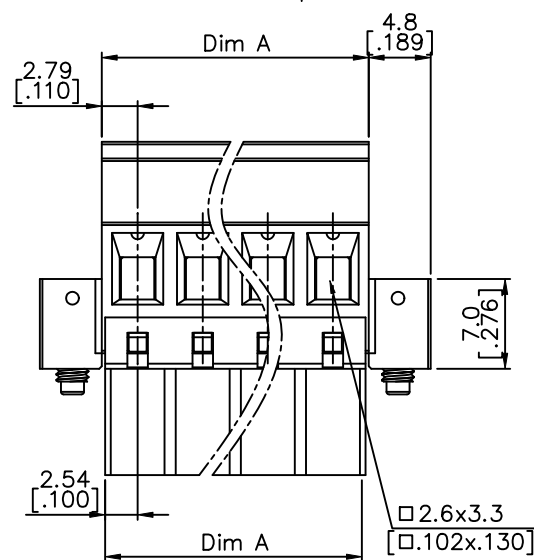
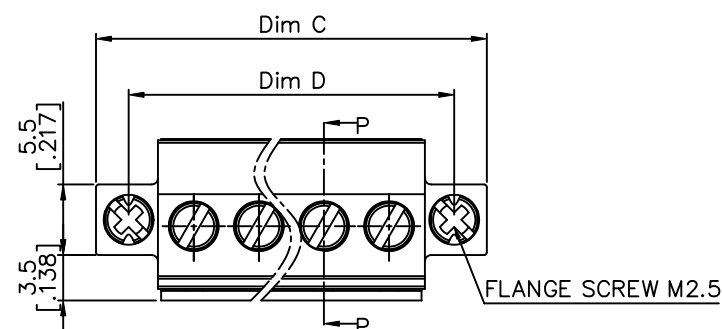


SECTION P-P



mat'l. code	surface ASME Y14.5	tolerance ASME Y14.5	projection MM [INCH]	product family TERMINAL BLOCK
ltr	ecn no	dr	date	title
E				TERMINAL BLOCK PLUGGABLE PLUG, BACK SIDE HOOK, W/FLANGE
				sheet 4 of 5 size
				20020011 A4
				type CUSTOMER Drawing
sheet index	revision	sheet		

PRODUCT NUMBER	SERIES NAME	PITCH
20020011-HXXXXXXLF	02-508	5.08 mm

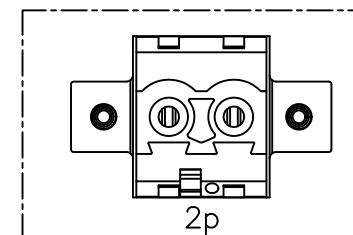


SECTION P-P

N = Number of poles

Dim A	$N \times 5.08 [ .200 ] + 0.5 [ .020 ]$
Dim B	$(N-1) \times 5.08 [ .200 ]$
Dim C	$N \times 5.08 [ .200 ] + 9.66 [ .380 ]$
Dim D	$(N+1) \times 5.08 [ .200 ]$

poles	Tolerance
2-6p	$\pm 0.15 [ .006 ]$
7-12p	$\pm 0.20 [ .008 ]$
13-18p	$\pm 0.30 [ .012 ]$
19-24p	$\pm 0.40 [ .016 ]$



mat'l. code				surface ASME Y14.5 ✓	tolerance ASME Y14.5	projection MM [INCH]	product family TERMINAL BLOCK
ltr	ecn	no	dr	date	tolerances unless otherwise specified		title
E					angles	X.±0.5	TERMINAL BLOCK
					linear	X.X±0.3	PLUGGABLE PLUG, BACK SIDE HOOK,
					X'±1"	X.XX±0.1	W/FLANGE
			dr	WENDY CHEN	051810	scale	sheet 5 of 5 size
			enr	JASON HSU	051810	FCI	dwg no
			chr	GARY HSIEH	051810		20020011
			appd	JOSEPH HSIA	051810		A4
sheet index	revision					type	CUSTOMER Drawing
	sheet						