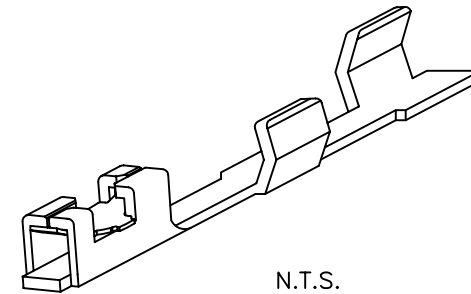
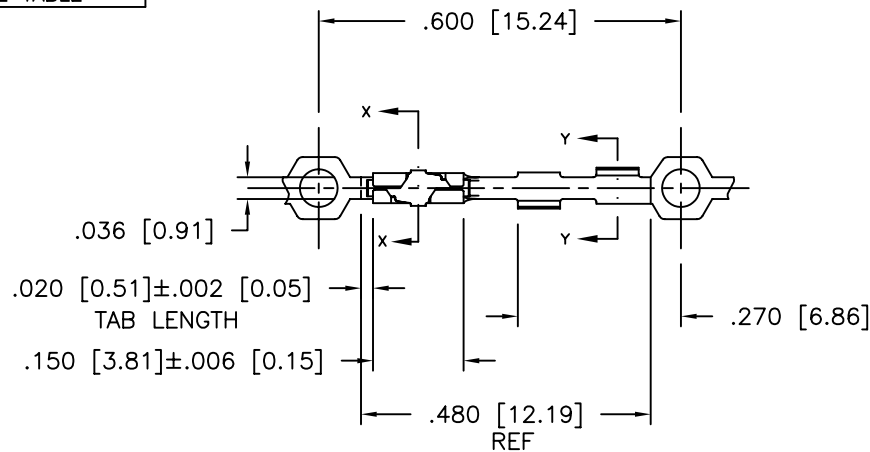


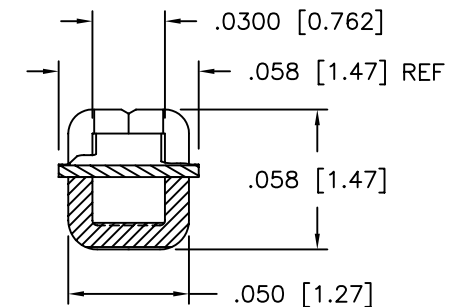
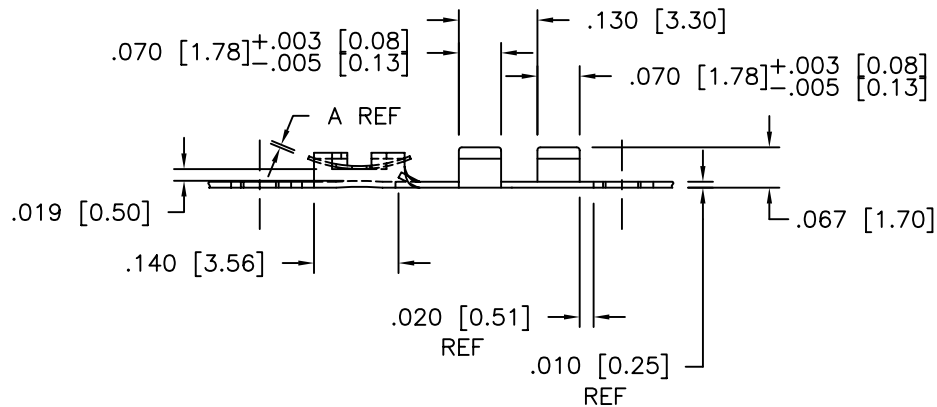
Tous droits strictement reserves. Reproduction ou communication a des tiers interdite sous quelque forme que ce soit sans autorisation ecrite du proprietaire. Propriete de c FCI. Droits de reproduction FCI.

All rights strictly reserved. Reproduction or issue to third parties in any form whatever is not permitted without written authority from the proprietor. Property of FCI. Copyright FCI.

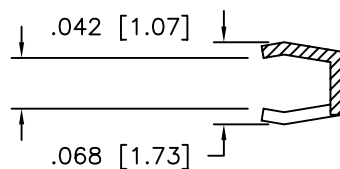
PRODUCT NUMBER  
SEE TABLE



N.T.S.



SECTION X-X  
SCALE 4:1  
ROTATED 90° CW



SECTION Y-Y  
SCALE 2:1

mat'l. code NOTE 1				tolerances unless otherwise specified		CUSTOMER COPY		A FCI www.fciconnect.com	
ltr	ecn no	dr	date	linear	.XX ±.01/.X±.3	projection	title	MINI PV™ CRIMP-TO-TAPE	
S	V61193	EPK	9/27/96		.XXX ±.005/.XX±.13				
T	V05-0267	VS	03/27/05	angles	.XXXX ±.0020/.XXX±.051			product family PV TERMINALS	
				dr	E. KROPIEWNICKI 9/27/96	INCH/MM	size	code	
				engr	T.BREWBAKER 9/27/96		dwg no	213	
				chr	T.BREWBAKER 9/27/96	scale		sheet	
				appd	T.BREWBAKER 9/27/96	1:1	A	75321	
sheet	revision	T	T					cage code	
index	sheet	1	2					22526	

ACAD

PDM: Rev:T


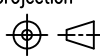
STATUS: Released

Printed: Mar 07, 2006

PRODUCT NUMBER NOTE 5	SPRING	BODY	DIM A
75321-001	GOLD FLASH	40u"/1.02u MIN Au OVER 50u"/1.27u MIN Ni IN CONTACT AREA REMAINDER OF PART GOLD FLASH	.0048/0.122
-002	GOLD FLASH	40u"/1.02u MIN Au OVER 50u"/1.27u MIN Ni IN CONTACT AREA REMAINDER OF PART 30u"/0.76u MIN Au	.0048/0.122
-003	GOLD FLASH	40u"/1.02u MIN Au OVER 50u"/1.27u Ni IN CONTACT AREA REMAINDER OF PART 30u"/0.76u MIN Au	.0035/0.089
-004	DISCONTINUED		
-005	DISCONTINUED		
75321-006	DISCONTINUED		

NOTES:

- MATERIALS :  
BODY : 1/4 HARD BRASS ASTM B-36 ALLOY C26000  
SPRING : BERYLLIUM COPPER, ASTM B-194 ALLOY C17200  
HEAT TREATED
- APPLICABLE SPECIFICATIONS :  
PRODUCT SPEC. : BUS-02-029  
APPLICATION SPEC. : TA-214
- PART TO MATE WITH .025 ±.001/.64 ±.02 SQUARE PIN.
- CRIMP HEIGHT = TAPE THICKNESS + .020 ±.002/.50 ±.05
- ADD AN LF SUFFIX TO PART NUMBERS FOR PRODUCT THAT MEETS EUROPEAN UNION DIRECTIVES AND OTHER COUNTRY REGULATIONS AS DESCRIBED IN GS-22-008.
- THIS PRODUCT IS NOT INTENDED TO BE EXPOSED TO MANUFACTURING SOLDERING PROCESSES.

mat'l. code				tolerances unless otherwise specified		CUSTOMER COPY	 www.fciconnect.com			
ltr	ecn no	dr	date		.XX ±.01/.X±.3		title			
T				linear	.XXX ±.005/.XX±.13	projection	MINI PV TM			
					.XXXX ±.0020/.XXX±.051		CRIMP-TO-TAPE			
				angles	0° ±2°	INCH/MM	product family PV TERMINALS			
				dr	E. KROPIEWNICKI 9/27/96	scale	size			
				enrg	T.BREWBAKER 9/27/96	1:1	dwg no			
				chr	T.BREWBAKER 9/27/96		75321			
				appd	T.BREWBAKER 9/27/96		code			
sheet	revision						213			
index	sheet						2 of 2			

cage code  
22526