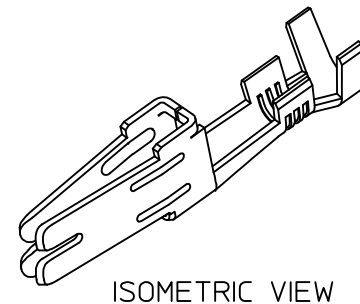
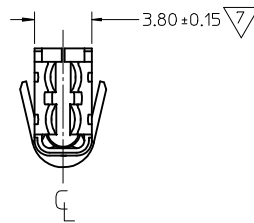
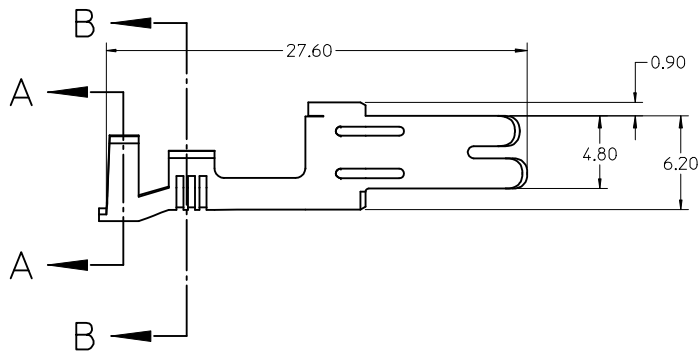
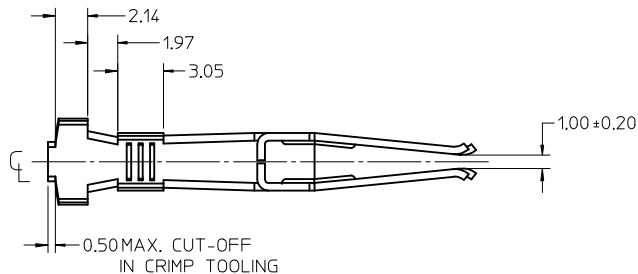


NOTES:

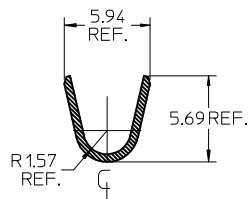
1. MATERIAL: COPPER ALLOY 151, 0.50mm THICK.
2. PLATING:
OVERALL *TIN: 0.00254 MIN BRIGHT TIN
OVER 0.00127 MIN NICKEL.

SELECT GOLD: 0.00076 MIN. SELECT GOLD IN CONTACT AREA,
0.00127 MIN. SELECT *TIN IN CRIMP AREA, OVER 0.00127 MIN NICKEL.

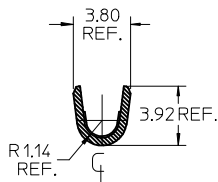
3. PRODUCT SPECIFICATION: PS-42815-001.
4. PACKAGING INFORMATION: PK-42815-001.
5. PART IS DESIGNED IN METRIC.
6. TERMINALS FOR USE WITH STRANDED WIRE ONLY,
STRANDED TINNED WIRE IS RECOMMENDED.
7. AFTER CRIMPING, THIS DIMENSION IS 3.55mm MINIMUM.
8. CRIMP SPECIFICATION: 638301000.
9. WHEN USING TIN-PLATED TERMINALS FOR APPLICATIONS
INVOLVING VIBRATION AND/OR THERMAL CYCLING,
MOLEX STRONGLY RECOMMENDS THE USE OF NYE LUBRICANT,
NYOGEL 760G, ON THE MATING AREA OF THE TERMINAL.
LUBRICANT SHOULD BE APPLIED AFTER THE TERMINALS ARE
INSERTED INTO THE HOUSING.



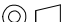

ISOMETRIC VIEW



SECTION A-A
INSULATION CRIMP



SECTION B-B
CONDUCTOR CRIMP

MATERIAL NO.		PLATING							
42815-0041		TIN							
42815-0042		SELECT GOLD							
ADD PACKAGING SPECS EC NO: UCP2013-5420 DRWN: AELHAG 2013/11/12 CHKD: JBELL 2013/11/12 APPR: F.SMITH 2013/11/25 B3	DESCRIPTION	QUALITY SYMBOLS ▽ = 0 ▽C = 0	GENERAL TOLERANCES (UNLESS SPECIFIED)		SCALE 4:1	DESIGN UNITS METRIC	 THIRD ANGLE PROJECTION	REVISE ON CAD ONLY	
				mm	INCH	DIMENSION STYLE MM ONLY			TITLE
		4 PLACES	± ---	± ---	DRAWN BY MFIRLEJ	DATE 2002/05/15	MINIFIT SR. FEMALE CRIMP TERMINAL, 14-16 AWG GOLD PLATED  MOLEX INCORPORATED		
		3 PLACES	± ---	± .010					
		2 PLACES	± 0.25	± .016	CHECKED BY JCOMERCI	DATE 2002/05/15			
		1 PLACE	± 0.40	± ---					
		ANGULAR ±1/2°			APPROVED BY JCOMERCI	DATE 2002/05/15	MATERIAL NO. SEE CHART	DOCUMENT NO. SD-42815-020	SHEET NO. 1 OF 1
		DRAFT WHERE APPLICABLE			THIS DRAWING CONTAINS INFORMATION THAT IS PROPRIETARY TO MOLEX INCORPORATED AND SHOULD NOT BE USED WITHOUT WRITTEN PERMISSION				
		MUST REMAIN WITHIN DIMENSIONS							