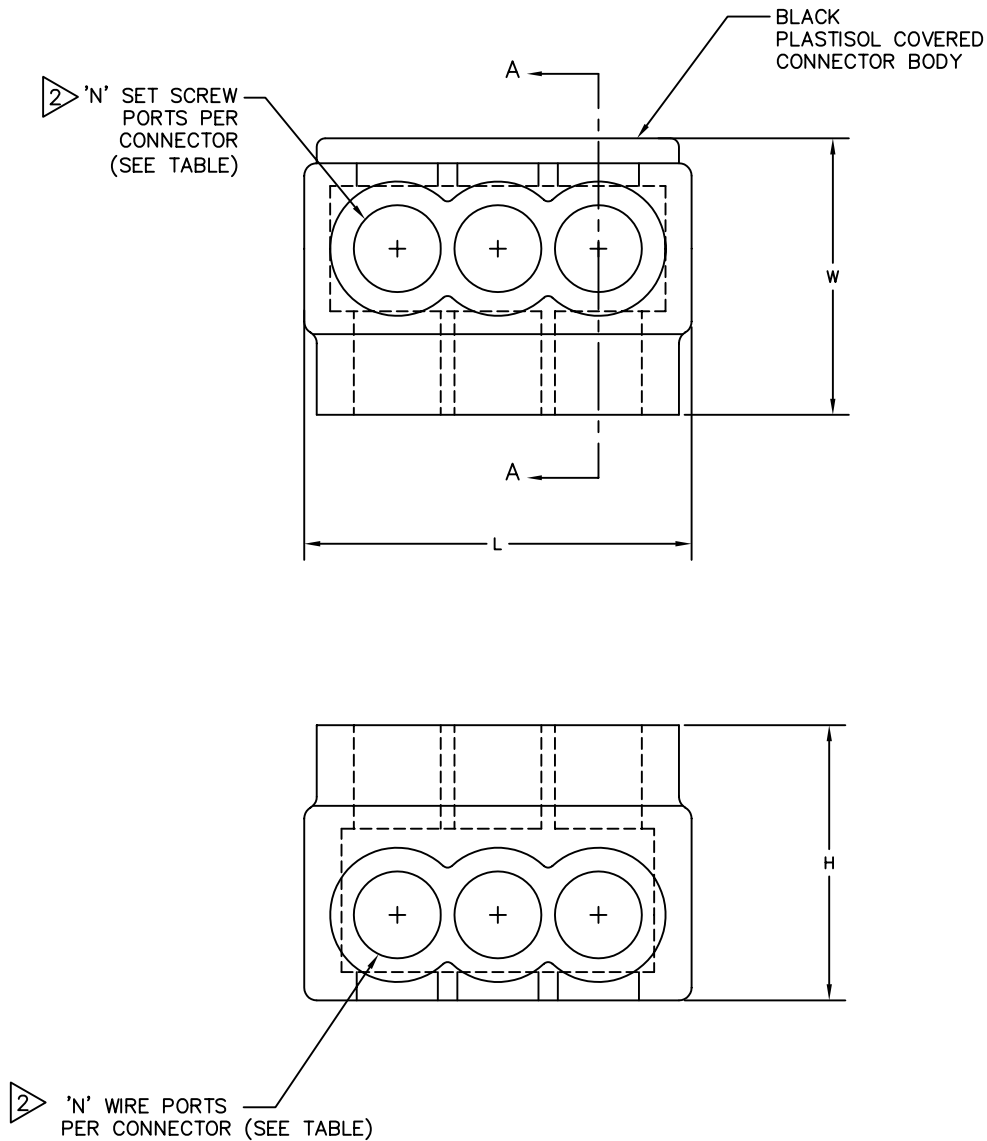


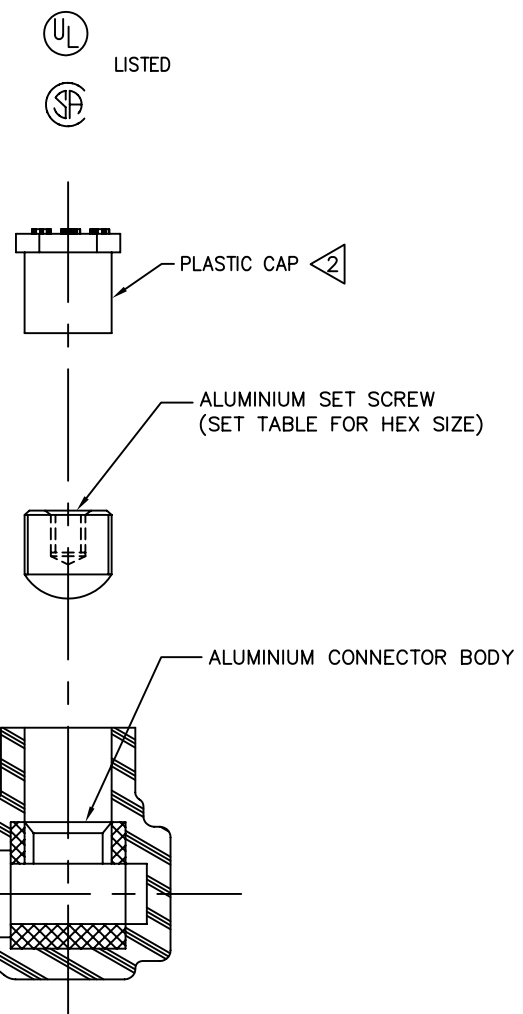
DRAWING NO.
SD214514

CATALOG NO.	WIRE RANGE (AWG/kcmil)	L	W	H	HEX KEY	N
1PL600-3	#4-600	4.00 [102]	2.38 [60]	2.75 [70]	3/8	3
1PL600-4	#4-600	5.28 [134]	2.38 [60]	2.75 [70]	3/8	4
1PL600-5	#4-600	6.56 [167]	2.38 [60]	2.75 [70]	3/8	5
1PL600-6	#4-600	7.84 [199]	2.38 [60]	2.75 [70]	3/8	6
1PL600-8	#4-600	10.41 [264]	2.38 [60]	2.75 [70]	3/8	8

FEATURES	BENEFITS
PLASTISOL COVERED AL6061-T6 BODY	SAVES TIME, LOWERS INSTALLATION COSTS, ELIMINATES TAPING.
OXIDE-INHIBITOR IS PRE-INSTALLED	INHIBITS MOISTURE AND CONTAMINANTS FROM ENTERING THE CONTACT AREA
RANGE-TAKING	REDUCES THE NUMBER OF CONNECTORS CARRIED IN INVENTORY



REV.	DATE	DESCRIPTION	ECO	BY	C'K'D.
B	10/25/06	MODIFIED TEXT NOTES & ADDED PLASTIC CAPS	13536	PL	DB



SECTION A-A

NOTES:

- THIS DRAWING TO BE INTERPRETED PER ANSI Y14.5M.
- END CAPS INSTALLED ON WIRE PORTS AND SET SCREW PORTS.
- ALL CONNECTORS UL LISTED, CSA CERTIFIED FOR AL9CU, 90°C APPLICATIONS, UNLESS OTHERWISE NOTED.
- DIMENSIONS IN BRACKETS [] ARE IN MILLIMETERS ROUNDED OFF TO THE NEAREST MILLIMETER, UNLESS OTHERWISE NOTED, AND ARE FOR REFERENCE ONLY.

TO ORDER BURNDY®PRODUCTS CALL 1-800-346-4175
MANCHESTER, NH 03109, USA
FOR PRODUCT INFO = <http://www.fciconnect.com>

UV BLACK COVERED DISTRIBUTION CONNECTORS

ITEM NO: N/A

CAT NO: 1PL600-SERIES

SCALE:	N/A
DRAWN BY:	D. RAJAKUMAR 4/24/02
CHECKER:	K. HENRY 5/23/02
DSN APPVL:	G. DITROIA 3/6/02
MFG APPVL:	T. BONINA 2/27/02
QC APPVL:	J. BRODEUR 3/5/02
MKT APPVL:	A. ZWIT 2/27/02
PROD FAM:	---
PROJECT #:	---
DOCUMENT TYPE:	Sales
REL LEVEL:	AutoCAD

BURNDY PRODUCTS	
DRAWING NO	REV
SD214514	B
SHEET 12 OF 13	