



Automotive Vents

SERIES: AVS 13, 20, 46

Superior performance and protection for increased reliability and lower overall cost

DESCRIPTION

- Black snap-fit vent comprised of ePTFE membrane with a polyester non-woven backing material
- Laminate type: LM6XX

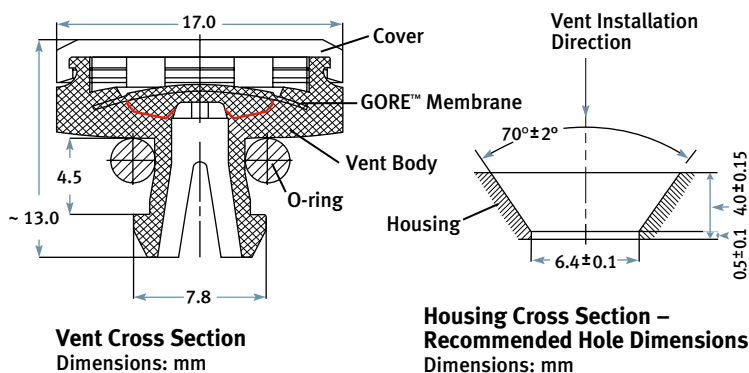
PHYSICAL PROPERTIES

Membrane Characteristics
Ingress Protection Class

Hydrophobic and Oleophobic
IP6K9K Integrated Protection
Approved (depending on
proper housing geometry)
Minimum Airflow ≥ 15 L/h @ 70 mbar (1 psi)
Water Entry Pressure (assembly) ≥ 600 mbar (≥ 8.7 psi)
for 30 seconds

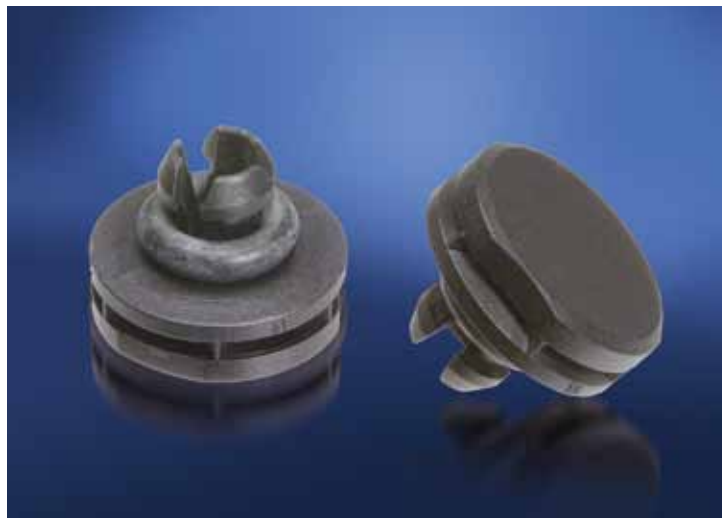
Minimum Airflow

Water Entry Pressure (assembly)



INSTALLATION

Please contact a Gore representative for housing recommendations and complete installation instructions.



REALIZE THE BENEFITS OF GORE® AUTOMOTIVE VENTS:

- Suitable for electronic control units and modules
- Dependable hydrophobic and oleophobic protection from water, oil, automotive fluids, washing products, dirt, dust and other contaminants
- Extends product life by reducing stress on housing seals
- Lower overall product cost through reduced manufacturing, testing and warranty costs
- Backed by Gore's technical expertise

SAMPLE SERIES	PRODUCTION SERIES	VENT BODY MATERIAL	VENT O-RING MATERIAL	OPERATING TEMPERATURE
AVS 13	AMF200013	PBT–GF30	EPDM 50° Shore A (Black)	-40°C to 125°C
AVS 20	AMF200015	PBT–GF30	Silicone 50° Shore A (Red)	-40°C to 125°C 150°C Short Term
AVS 46	AMF200067	PBT–GF30 Hydro Stabilized	Silicone 50° Shore A (Red)	-40°C to 150°C



Automotive Vents

SERIES: AVS 13, 20, 46

SUPERIOR PERFORMANCE AND PROTECTION FOR INCREASED RELIABILITY AND LOWER OVERALL COST

Hydrophobic and oleophobic ePTFE membrane

Protects and resists blocking after contact with water or other common automotive fluids

Dirt and dust filtration down to 0.07 µm

Protects against contamination from dirt, dust, salt and road debris

Air permeable membrane that equalizes pressure

Reduces stress on housing seals to increase component reliability

Thermally stable and chemically resistant system

Provides durability and reliable venting in automotive under-hood environments

Secure snap-fit assembly with mechanical protection

Withstands extreme environments, including IP6K9K testing

Easy to install with manual or automatic placement

Please note that product values are subject to change. Please contact a GORE® Automotive Vents associate today for the most up to date information and for assistance determining the best product for your specific application.



INTERNATIONAL CONTACTS

Australia	61.2.9473.6800	Mexico	52.81.8288.1281
China	86.21.5172.8299	Scandinavia	46.31.706.7800
France	33.1.5695.6565	Singapore	65.6733.2882
Germany	49.89.4612.2211	South America	55.11.5502.7800
India	91.22.6768.7000	Spain	34.93.480.6900
Italy	39.045.6209.240	Taiwan	886.2.8771.7799
Japan	81.3.3327.0011	United Kingdom	44.1506.460123
Korea	82.2.393.3411	USA	1.410.392.4440

FOR INDUSTRIAL USE ONLY.

Not for use in food, drug, cosmetic or medical device manufacturing, processing, or packaging operations.

All technical information and advice given here is based on Gore's previous experiences and/or test results. Gore gives this information to the best of its knowledge, but assumes no legal responsibility. Customers are asked to check the suitability and usability in the specific application, since the performance of the product can only be judged when all necessary operating data are available. The above information is subject to change and is not to be used for specification purposes.

Gore's terms and conditions of sale apply to the sale of the products by Gore.

W. L. Gore & Associates, Inc. is certified according to ISO TS 16949, ISO 9001 and ISO 14001 standards.

W. L. Gore & Associates GmbH is certified according to ISO TS 16949 and ISO 9001 standards.

GORE and designs are trademarks of W. L. Gore & Associates
© 2011 W. L. Gore & Associates, Inc.

W. L. GORE & ASSOCIATES, INC.

401 Airport Road • Elkton, MD 21922 • USA

Phone: 410.392.4440 (USA)

E-Mail: automotive.us@wlgore.com

gore.com/autovents

