



# FWA 150V 70-1000A

Electrical Characteristics					Ordering Information			Dimensions	Curves
Type	Rated Current RMS-Amps	I²t (A² Sec)		Watts Loss	Part Number	Carton Qty.	Carton Weight (lbs)	Figure Number	BIF #
		Pre-arc	Clearing at 150V						
FWA 150V	70	470	4000	6.9	FWA-70B	1	0.18	Fig. 1	35785310
	80	670	6000	7.7	FWA-80B				
	100	1200	12000	9.0	FWA-100B				
	125	1870	18000	11.2	FWA-125B				
	150	2700	26000	13.5	FWA-150B				
	200	4780	45000	17.6	FWA-200B				
	250	7470	70000	22.5	FWA-250B				
	300	10760	100000	27.0	FWA-300B				
	350	15700	140000	30.6	FWA-350B				
	400	20300	180000	35.2	FWA-400B				
	500	39000	120000	35.0	FWA-500A	5	2.42		
	600	46000	140000	47.0	FWA-600A				
	700	75000	220000	49.0	FWA-700A				
	800	92000	280000	58.0	FWA-800A				
	1000	170000	510000	60.0	FWA-1000A				

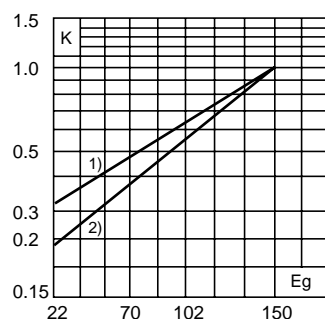
- Interrupting rating 100kA RMS Symmetrical for ampere ratings 70-400.
- Interrupt rating 200kA RMS Symmetrical for ampere ratings 450-1000.
- Watts loss provided at rated current.
- (150 Vdc/Interrupting rating 20kA) U.L. Recognition on 70 - 800 amperes.
- (80 Vdc/Interrupting rating 100kA) U.L. Recognition on 70 - 400 amperes.

1 kg = 2.2 lbs 1 lb = 0.45 kg

## Electrical Characteristics

### Total Clearing I<sup>2</sup>t

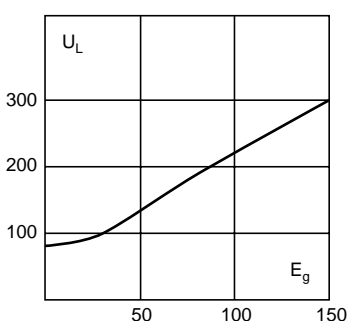
The total clearing I<sup>2</sup>t at rated voltage and at power factor of 15% are given in the electrical characteristics. For other voltages, the clearing I<sup>2</sup>t is found by multiplying by correction factor, K, given as a function of applied working voltage, E<sub>g</sub>, (RMS).



- 1) 500-1000 Amp Range  
2) 70-400 Amp Range

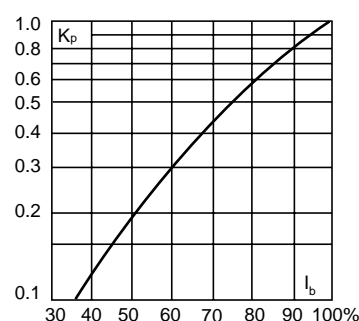
### Arc Voltage

This curve gives the peak arc voltage, U<sub>L</sub>, which may appear across the fuse during its operation as a function of the applied working voltage, E<sub>g</sub>, (RMS) at a power factor of 15%.



### Power Losses

Watts loss at rated current is given in the electrical characteristics. The curve allows the calculation of the power losses at load currents lower than the rated current. The correction factor, K<sub>p</sub>, is given as a function of the RMS load current, I<sub>b</sub>, in % of the rated current.

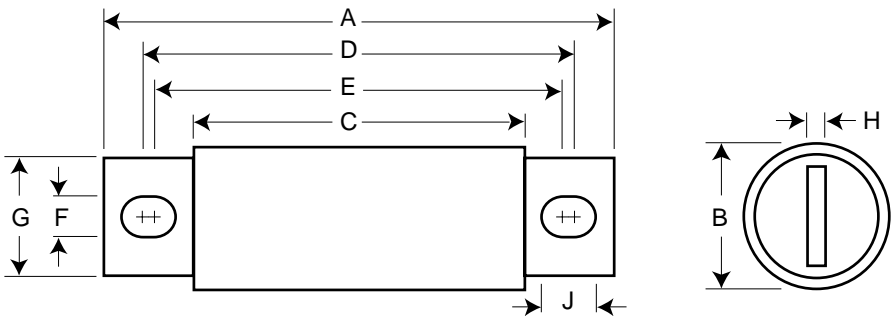


FWA 150V 70-1000A



Dimensions

Fig. 1: 70-1000 Amp Range



Dimension in inches.  
1mm = 0.0394" 1" = 25.4mm

Order #	Fig.	A	B	C	D	E	F	G	H	J
FWA-70B-400B	1	2.656	1.000	1.156	2.188	1.936	0.312	0.750	0.125	0.438
FWA-500A-1000A	1	3.476	1.500	1.250	2.579	1.917	0.433	1.000	0.250	0.764

The only controlled copy of this BIF document is the electronic read-only version located on the Bussmann Network Drive. All other copies of this document are by definition uncontrolled. This bulletin is intended to clearly present comprehensive product data and provide technical information that will help the end user with design applications. Bussmann reserves the right, without notice, to change design or construction of any products and to discontinue or limit distribution of any products. Bussmann also reserves the right to change or update, without notice, any technical information contained in this bulletin. Once a product has been selected, it should be tested by the user in all possible applications.